



# GARDEN INVERTEBRATES



Here are some of the invertebrates likely to call your garden home. See if you can spot them all!

## 7-Spot Ladybird

*Coccinella septempunctata*



7 black spots

## Cockchafer beetle

*Melolontha melolontha*



## Thick-legged flower beetle

*Oedemera nobilis*



Swollen hind legs

## Common green shieldbug

*Palomena prasina*



(c) Shane Farrell

## Common Earwig

*Forficula auricularia*



(c) Shane Farrell

## Rosemary Leaf beetle

*Chrysolina americana*



Metallic green and purple stripes

On Rosemary + other herbs

(c) Stephen Suttill





# GARDEN INVERTEBRATES



## Cinnabar moth

*Tyria jacobaeae*



(c) Steve McWilliam

## Common garden snail

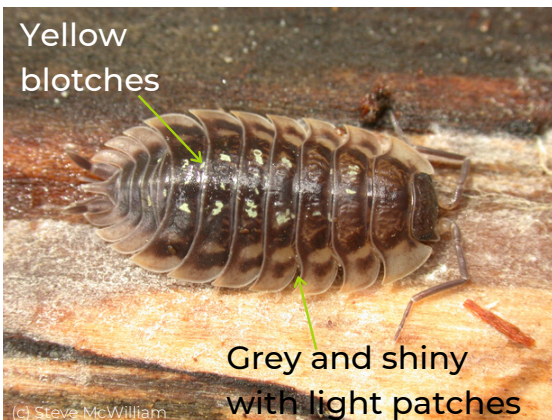
*Cornu asperum*



Image by Vincenzo Modica from Pixabay

## Common shiny woodlouse

*Oniscus asellus*



Yellow blotches

Grey and shiny with light patches

(c) Steve McWilliam

## Common rough woodlouse

*Porcellio scaber*



Grey, rough appearance (can sometimes be mottled)

(c) Steve McWilliam

## Dark-edged bee fly

*Bombylius major*

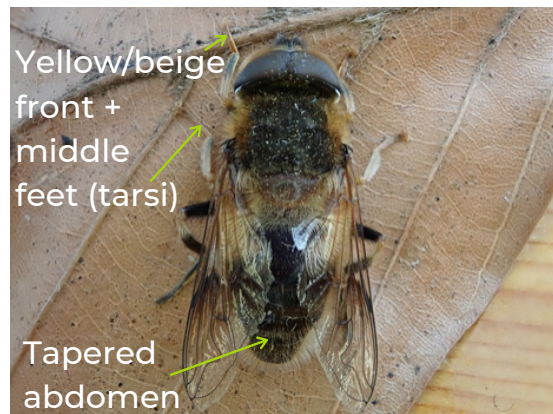


Large proboscis

Dark edges on wings

## Tapered dronefly

*Eristalis pertinax*



Yellow/beige front + middle feet (tarsi)

Tapered abdomen

Still unsure? Have a look here for useful invert ID links:

[http://www.record-lrc.co.uk/c2.aspx?Mod=Article&ArticleID=MyPatch\\_Links](http://www.record-lrc.co.uk/c2.aspx?Mod=Article&ArticleID=MyPatch_Links)