

CHESHIRE (VICE COUNTY 58)



MOTH REPORT FOR 2020



Light Feathered Rustic: Alison & Julian Borrow

Author: David Maddy

Date: March 2021

Introduction

The year 2020 brought big changes. Adapting to restrictions, many people sought new interests, or pursued established interests with greater intensity. The amount of moth-recording in gardens throughout Britain increased dramatically, with retailers reportedly running out of stock of moth traps. Country walks - a permitted form of exercise - also afforded opportunities for recording of larvae and leaf-mines. Cheshire did not buck the trend; nearly one thousand different species were recorded in the county in 2020; the total number of moth records leapt up by over 26% to more than 91,000; the number of recorders in the county reached 224, including ninety who submitted a batch of records for the year.

This Annual Report contains a summary and analysis of that moth recording in 2020.

- A list is provided, itemising all micro-moth species that were recorded three or fewer times during the year as well as all macro-moth species that were recorded five or fewer times.
- The area of VC58 covers at least a part of 49 “hectads” - grid-reference squares of 10km by 10km. A total of 552 species were recorded for the first time in their respective hectads in 2020. These are listed for each hectad, in turn.
- The increased range of seven species across the county is illustrated in a set of maps.
- Thirteen migrant species - those species that have flown or been transported by air-streams from origins outside of the British Isles - were recorded in 2020 in Cheshire and are tabulated.

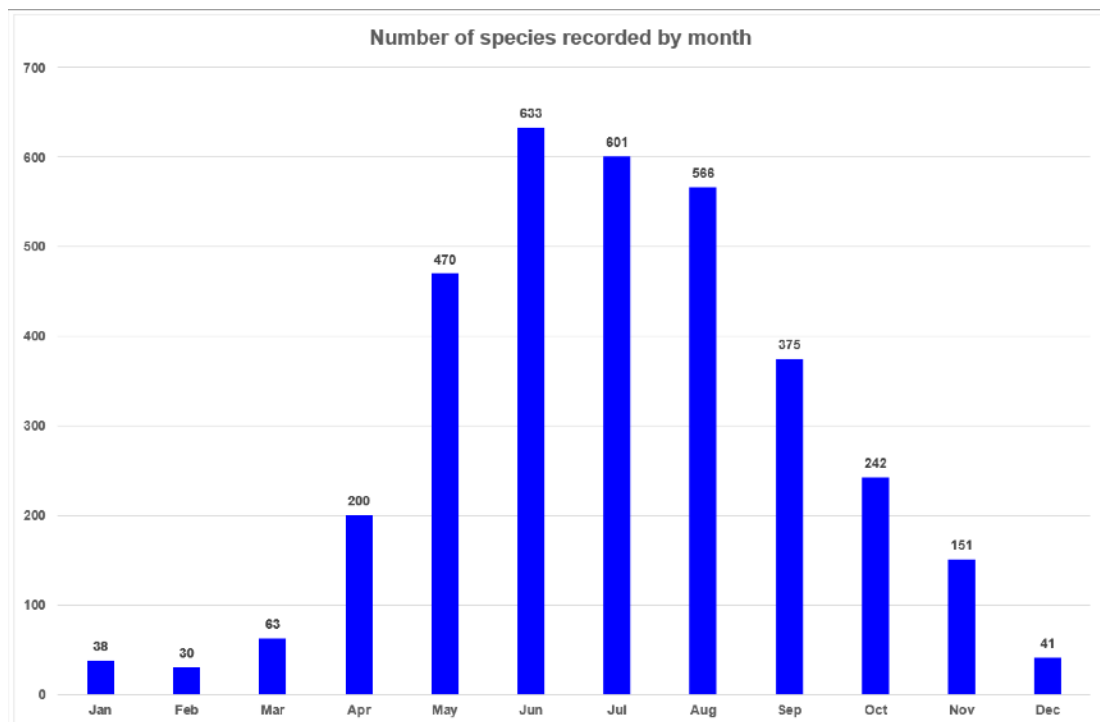
In the last Annual Report, a table showed the number of species and records in Cheshire over the decade from 2010 to 2019. The table is reproduced, below, and updated with the figures of 2020. The trend over that period has continued; the total numbers of species and records of both Micro-moths and Macro-moths have reached all-time highs for the county.

The county database now contains 1,491,544 records

Year	Species			Records		
	Micro's	Macro's	Total	Micro's	Macro's	Total
2010	467	394	861	13,222	45,504	58,726
2011	459	396	855	14,722	39,309	54,031
2012	449	381	830	12,613	32,556	45,169
2013	505	406	911	17,937	44,940	62,877
2014	515	409	924	23,508	53,853	77,361
2015	490	420	910	17,091	47,901	64,992
2016	519	411	930	21,411	44,543	65,954
2017	526	422	948	21,340	51,567	72,907
2018	543	427	970	24,623	54,755	79,378
2019	546	416	962	23,359	48,971	72,330
2020	561	435	996	26,817	64,682	91,499

After a wet and windy February in 2020, Spring was much more settled, generally dry and sunny. Summer was warmer and wetter than average, with some hot spells. A sunny and dry September gave way to a dull and wet October balancing out rainfall and sunshine for the autumn overall. November was mild, with fewer frosts than usual.

The weather conditions are reflected in the graph, below, showing the number of species per month in 2020.



Steve Holmes

Least-recorded Species in 2020

Time and effort dictate that this report cannot be a complete analysis of the years' records; it does however itemise all micro-moth species that were recorded three or fewer times during the year as well as all macro-moth species that were recorded five or fewer times.

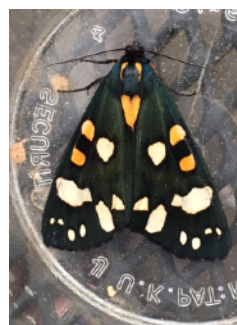
Not meeting those criteria - as it was recorded eight times in 2020 - was the new county record of 15.090 *Phyllocnistis saligna*. Mines on crack willow were observed in September and October at areas around Northwich and at Haslington, near Crewe.

Also, 7.005 *Nemophora minimella* was recorded on four days in July at Higher Poynton, following only one record of the species since 1966.

Mines of 15.051 *Phyllonorycter lantanella* were recorded nine times, exceeding the seven records of 2019, the first year that this species had been recorded in Cheshire. Locations stretched from the Wirral through Lostock Gralam to Poynton, on dates from January to April and October to December.

There was a long wait between 1947, the first Cheshire record, at Hoylake, of 63.060 *Evergestis pallidata* and the next one, at Alsager, in 2013. It had been observed four more times before, in 2020, a further seven records could be added: at Wybunbury on 30th June, three at Upton (Chester) in July and three at Coxbank, near Audlem in July and August.

A colony of 72.029 Scarlet Tiger *Callimorpha dominula* was introduced at Caldy, Wirral, "for experimental purposes" in 1961. All Cheshire records were in that immediate vicinity until 2015, when one was sighted at Waverton, east of Chester. Subsequently, there had been further observations from Burton Mere Wetlands RSPB, Runcorn and Nantwich. In 2020, there were six more records: three from Burton Mere Wetlands RSPB in June, and one in Vicars Cross, east of Chester, in April, Wrenbury (south-west of Nantwich) and Hale, Altrincham, both in June.



Keith Neal

Persisting in its stronghold of the Willaston-Wistaston-Shavington triangle was 73.059 Toadflax Brocade *Calophasia lunula*, a further nine records being added to the database from May to August, the same as the total number recorded prior to 2020. The first Cheshire record was at Shavington in May 2018.

Throughout what follows, header information relating to each species appears thus:

3.004 **Gold Swift** *Hepialus hecta* (Linnaeus, 1758)

Which, reading left to right detail:

- Agassiz, Beavan & Heckford species number
- Species' vernacular name
- Species' taxonomic name
- Species' Author(s)

1.003 *Micropterix aureatella* (Scopoli, 1763)

One along the roadside at Bakestonedale Road, Kettleshulme on 15th June (SHH).

2.003 *Eriocrania unimaculella* (Zetterstedt, 1839)

Two adults at Alsager on 10th April (MD). Tenanted mines on birch at Oakgrove on 20th May (SHH) and at Ellesmere Port on 20th June (HJ).

2.006 *Eriocrania cicatricella* (Zetterstedt, 1839)

Tenanted mines on birch at Ellesmere Port on 28th June (HJ).

2.007 *Eriocrania semipurpurella* (Stephens, 1835)

Two adults at Alsager on 7th April (MD), confirmed by genitalia examination, and mines on birch at Gawsworth Common on 20th May (SHH).

2.008 *Eriocrania sangii* (Wood, 1891)

One adult at Alsager on 5th Apr (MD), confirmed by genitalia examination. Tenanted mines on 10th May and vacated mines on 20th June, both on birch at Ellesmere Port (HJ).

3.004 Gold Swift *Phymatopus hecta* (Linnaeus, 1758)

Observed flying at dusk over damp pasture at Brook Lane, Coxbank on 4th June (PH).

4.005 *Stigmella betulicola* (Stainton, 1856)

Mines on birch at Danes Moss on 9th September (SHH, BS).

4.008 *Stigmella glutinosae* (Stainton, 1858)

Mines on alder at Haslington on 27th September (SHH). The dark head and prothoracic plate of the larva were noted.

4.040 *Stigmella assimilella* (Zeller, 1848)

Tenanted mines on aspen at Kenworthy on 3rd September (BS) and a mine at Thornton Green on 6th September (SWH).

Three mines on aspen at Rudheath on 14th October (SHH).



Steve Holmes

4.041 *Stigmella sorbi* (Stainton, 1861)

Mines on rowan at Langley on 13th September and at Dean Valley, Rainow on 5th October (SHH).

4.044 *Stigmella continuella* (Stainton, 1856)

Two mines on birch at Danes Moss on 9th September (SHH, BS).

4.062 *Stigmella samiatella* (Zeller, 1839)

One adult male at Alsager on 2nd August (MD), confirmed by genitalia examination. Three mines on sweet chestnut at Whitegate on 19th September (SHH, HJ) and one, vacated, also on sweet chestnut at Eastham on 7th October (PHo).

4.075 *Ectoedemia louisella* (Sircom, 1849)

Mines on field maple seeds at Ellesmere Port on 10th July (HJ) and at Wilmslow Carrs on 7th September (SHH)

4.077 *Ectoedemia weaveri* (Stainton, 1855)

Six early mines on cowberry at Brushes Valley on 17th November (BS).

4.085 *Ectoedemia argyropeza* (Zeller, 1839)

Sixteen mines on aspen (eight tenanted) at Roundthorn, Wythenshawe on 13th November (BS), three on fallen aspen leaves at Withinlee Wood, Prestbury on 10th November and one on aspen at Rudheath on 22nd November (SHH).

4.088 *Ectoedemia heringella* (Mariani, 1939)

Following the first county record last year, at Crewe, one mine on holm oak at Oakleigh Cemetery, Chester on 11th March (HJ).

6.003 *Heliozela sericiella* (Haworth, 1828)

Mines on oak at Gigg Brook, Compstall on 10th January (SHH) and at Bosley Cloud on 11th October (SHH, KM, BS).

7.011 *Nematopogon pilella* ([Denis & Schiffermüller], 1775)

Three on the roadside verge at Pym Chair (east of Rainow) on 29th May (SHH), one male was confirmed by dissection. Forming only the seventh record in Cheshire, these were at the opposite side of the moor to those found in 2013.



Steve Hind

8.001 *Incurvaria pectinea* (Haworth, 1828)

Eighty mines on birch at Pym Chair on 29th May (SHH).

8.003 *Incurvaria oehlmanniella* (Hübner, 1796)

Numerous cut-outs on bilberry at Bosley Cloud on 11th October (SHH, KM, BS).

10.002 *Tischeria dodonaea* (Stainton, 1858)

Five mines on oak at Well Green, Altrincham on 1st October (SHH)

11.012 *Psyche casta* (Pallas, 1767)

Case at Wybunbury Moss on 2nd June (JEH).

12.021 *Nemapogon clematella* (Fabricius, 1781)

At Burwardsley on 29th July (MRW). Only the second Cheshire record since 1900.

14.003 *Bucculatrix maritima* (Stainton, 1851)

One on 31st July and two on 5th August at Little Neston (SK). After only two records since 1955, this species has now been recorded every year since 2016.



Simon Knight

15.008 *Caloptilia alchimiella* (Scopoli, 1763)

One at Henbury 28th July (TW) and one at Little Sutton on 21st August (HJ), both resulting from genitalia examination.

15.009 *Caloptilia robustella* (Jäckh, 1972)

One, a female, at Alsager on 14th August (MD), confirmed by genitalia examination.

15.017 *Calybites phasianipennella* (Hübner, 1813)

One, of the form *quadruplella*, at Upton, Chester on 13th August (RW).

15.046 *Phyllonorycter blancardella* (Fabricius, 1781)

Four bred *ex-apple* leaf mines at Withington on 22nd October 2019 and another four *ex-apple* leaf mines at Pickmere on 10th November (SHH). All emerged in March. One specimen from each batch was confirmed by genitalia examination.

15.056 *Phyllonorycter salicicolella* (Sircom, 1848)

One bred from leaf mine on willow at Marston. It emerged on 27th March.

15.058 *Phyllonorycter hilarella* (Zetterstedt, 1839)

One *Salix caprea* leaf mine at Gawsworth on 29th October 2019, another at Woodley on 28th December 2019. Both emerged in April.

15.059 *Phyllonorycter cavella* (Zeller, 1846)

Two mines at Hapsford on 30th August (MB, SWH). At least six creases were noted.

15.060 *Phyllonorycter ulicicolella* (Stainton, 1851)

One at Swettenham on 9th June, one near Whirley Quarry on 14th June (both confirmed by genitalia examination) and one at Prince's Wood, Poynton on 15th June, all *ex-gorse* (SHH).

16.002 *Yponomeuta padella* (Linnaeus, 1758)

Two grey moths from an isolated hawthorn hedge at Marton on 14th July (SHH).

16.014 *Pseudoswammerdamia combinella* (Hübner, 1786)

One at Waverton on 9th June (H&BC).



Bob & Helen Coan

16.019 *Paraswammerdamia albicapitella* (Scharfenberg, 1805)

One at Elton on 12th August (MB, SWH).



Steve Holmes

16.024 *Ocnerostoma friesei* (Svensson, 1966)

A male on 10th July and another on 20th July, both at Alsager, confirmed by genitalia examination (MD). Also to light trap at Wildboarclough on 17th July, confirmed by genitalia examination (SHH).

17.002 *Ypsolopha nemorella* (Linnaeus, 1758)

Four at Higher Poynton on 30th July (SHH).

17.006 *Ypsolopha horridella* (Treitschke, 1835)

The third and fourth Cheshire records came at Willaston, Nantwich on 25th July and 30th July (DT).



David Taylor

17.009 *Ypsolopha sylvella* (Linnaeus, 1767)

One at Great Sutton on 2nd October (MBe).

17.014 *Ochsenheimeria taurella* ([Denis & Schiffermüller], 1775)

At Styperson, all beaten from gorse, on 11th July 2020 (SHH)

19.005 *Glyphipterix haworthana* (Stephens, 1834)

Ten at Wybunbury Moss on 2nd June (JEH).

20.001 *Argyresthia laevigatella* (Herrich-Schäffer, 1855)

One at Wildboarclough on 17th July (SHH), confirmed by genitalia examination.

20.014 *Argyresthia sorbiella* (Treitschke, 1833)

One at Redesmere on 23rd June and another on 24th June at Wildboarclough (SHH).

20.015 *Argyresthia curvella* (Linnaeus, 1761)

One at Hoole on 25th May (AN), a second at Little Neston on 23rd June (SK) and a third at Handbridge on 28th June 2020 (KP).



Kevin Peace

20.018 *Argyresthia spinosella* (Stainton, 1849)

One at Heswall on 25th May (JJ) and another at Bowdon, Altrincham on 2nd June (RH). Orange tegulae were observed.



Roy Hilton

20.024 *Argyresthia semitestacella* (Curtis, 1833)

One at Alsager on 22nd August (MD).

28.004 *Denisia similella* (Hübner, 1796)

One at Lamaload on 17th June and at Bridgemont on 10th August (SHH) and another at Wildboarclough on 6th August (A&JB).

28.025 *Pleurota bicostella* (Clerck, 1759)

One at Wybunbury on 1st June (RB).

32.029 *Agonopterix umbellana* (Fabricius, 1794)

One at Wildboarclough on 9th May (A&JB).

32.031 *Agonopterix alstromeriana* (Clerck, 1759)

One on 10th April and another on 24th August both at Waverton (H&BC). Also at Little Neston on 1st June (SK).

35.010 *Aproaerema anthyllidella* (Hübner, [1813])

One at Little Sutton on 23rd July (HJ), confirmed by genitalia examination.

35.011 *Anacamptis populella* (Clerck, 1759)

One at Ellesmere Port on 25th June (HJ), confirmed by genitalia examination.

35.020 *Anarsia spartiella* (Schrank, 1802)

One at Wildboarclough on 21st July (A&JB)

35.035 *Chrysoesthia drurella* (Fabricius, 1775)

Mines at Plumley Moor on 24th August, at Doddington Park Farm on 30th Aug and at Rope on 20th September (SHH).

35.039 *Bryotropha politella* (Stainton, 1851)

One at Lamaload on 17th June (SHH), confirmed by genitalia examination.

35.049 *Bryotropha similis* (Stainton, 1854)

Two 24th June and four on 17th July at Wildboarclough (SHH), confirmed by genitalia examination.

35.050 *Aristotelia ericinella* (Zeller, 1839)

Numerous specimens were observed at Little Budworth Common on 16th August (DH-T).

35.066 *Monochroa tenebrella* (Hübner, [1817])

Two at Wildboarclough on 24th June (SHH), confirmed by genitalia examination.

35.081 *Oxypteryx atrella* ([Denis & Schiffermüller], 1775)

One at Sale on 31st July (JPS).



John Shaughnessy

35.107 *Psoricoptera gibbosella* (Zeller, 1839)

One at Waverton on 27th July (H&BC), confirmed by genitalia examination.

35.146 *Teleiopsis diffinis* (Haworth, 1828)

One at Handbridge on 21st May (KP), one at Higher Poynton on 22nd June (SHH) and one at Henbury on 19th September (TW).

35.147 *Carpatolechia decorella* (Haworth, 1812)

One at Great Sutton on 7th January 2020 (MBe). More than half of the 19 Cheshire records are from this site.



Mel Bellingham

35.149 *Carpatolechia alburnella* (Zeller, 1839)

One at Sale on 16th July (JPS).

35.150 *Carpatolechia notatella* (Hübner, [1813])

A few larvae on sallows at Danes Moss on 9th September (SHH, BS). The first Cheshire record since 1976.

35.151 *Carpatolechia proximella* (Hübner, 1796)

Eight at Wybunbury on 1st June (RB) and a larva, on birch, at Danes Moss on 9th September

(SHH, BS).

36.002 *Batrachedra pinicolella* (Zeller, 1839)

Two at Alsager on 24th June (MD) and one at Appleton Park, Warrington on 12th July (CW).



Clive Washington

37.012 *Coleophora limosipennella* (Duponchel, [1843])

Three larvae on roadside elms at Ash Brook, Darnhall on 9th August (SHH). The eighth Cheshire record.

37.013 *Coleophora siccifolia* (Stainton, 1856)

Two larvae on rowan at Redesmere on 23rd June (SHH). The seventh Cheshire record.

37.024 *Coleophora vitisella* (Gregson, 1856)

Ten larvae on cowberry at Bosley Cloud on 11th October (SHH, KM, BS).

37.026 *Coleophora violacea* (Ström, 1783)

Three larvae on rowan and blackthorn at Moston on 27th September (SHH).



Steve Hind

37.029 *Coleophora orbitella* (Zeller, 1849)

One at Alsager on 24th June (MD), confirmed by genitalia examination.

37.033 *Coleophora trifolii* (Curtis, 1832)

One adult at Norton Priory, Runcorn on 2nd June (PFH, DWE) and larvae on melilot at Danes Moss on 9th September (SHH, BS).

37.035 *Coleophora alcyonipennella* (Kollar, 1832)

One at Wildboarclough on 31st July (SHH), confirmed by genitalia examination. This is only the second record for Cheshire.

37.044 *Coleophora discordella* (Zeller, 1849)

Larval cases on bird's foot trefoil at Whaley Bridge on 8th August (AS) and at Kenworthy, Sale on 3rd September (BS). A dead larva was found on bird's foot trefoil at Danes Moss on 9th September (SHH, BS).

37.050 *Coleophora albidella* ([Denis & Schiffermüller], 1775)

Two at Waverton on 25th June (H&BC), confirmed by genitalia examination.

37.052 *Coleophora ibipennella* (Zeller, 1849)

One, obtained off oak, at Walker's Green on 12th July (SHH), confirmed by genitalia examination.

37.053 *Coleophora betulella* (Heinemann, [1876])

One at Alsager on 25th June (MD), confirmed by genitalia examination.

37.070 *Coleophora tamesis* (Waters, 1929)

One at Wildboarclough on 17th July (SHH), confirmed by genitalia examination.

37.083 *Coleophora saxicolella* (Duponchel, [1843])

At Little Sutton on 21st July and 5th August (HJ) and at Burwardsley on 14th August (MRW). All were confirmed by genitalia examination. The first occasion since 1983 to note more than one record in a year.

37.099 *Coleophora striatipennella* (Nylander [1848])

One at Burwardsley on 15th June (MRW), confirmed by genitalia examination.

37.102 *Coleophora argentula* (Stephens, 1834)

Two larvae at Rudheath on 14th October and one at Broken Cross on the same day, all yarrow (SHH).

38.016 *Elachista subalbidella* (Schläger, 1847)

One larva, on molinia, at Danes Moss on 9th September (SHH, BS), and another, also on molinia, at Bosley Cloud on 11th October (SHH, KM, BS).



Ben Smart

38.018 *Elachista bisulcella* (Duponchel, [1843])

One, off tufted Hair-grass, at Styperson on 13th August (SHH), confirmed by genitalia examination. Only the fifth Cheshire record.

38.028 *Elachista alpinella* (Stainton, 1854)

One at Bridgemont on 11th August (SHH), confirmed by genitalia examination. Only the sixth Cheshire record and the first since 1987.

38.030 *Elachista albifrontella* (Hübner, [1817])

One, beaten from gorse in a field adjacent to Prince's Wood, Poynton on 15th June, one at Charles Head on the same day and one at Nab End on 17th June, confirmed by genitalia examination (SHH).

38.032 *Elachista apicipunctella* (Stainton, 1849)

One on 24th April and another on 9th August, both at Higher Poynton (SHH).

38.038 *Elachista rufocinerea* (Haworth, 1828)

One at Park Pit, Poynton on 22nd April (SHH).

38.046 *Elachista albidella* (= *Biselachista albidella*) (Nylander, [1848])

One at Wildboarclough on 24th June (SHH) and another, also at Wildboarclough on 31st July (A&JB). Both confirmed by genitalia examination.

38.047 *Elachista freyerella* (Hübner, [1825])

One ex-black knapweed seed-heads at Hockley, Poynton on 11th April (SHH). The adult emerged on 20th April, presumably pupated on the seed-heads. Confirmed by genitalia examination. Only the eighth Cheshire record, the third since 1983.

39.003 *Spuleria flavicaput* (Haworth, 1828)

One at Alsager on 19th May (DRS) and one at Gowy Meadows CWT on 26th May (SWH). Records of this species in Cheshire seem to have occurred only every three years since 2009.



Dave Skingsley



40.001 *Mompha conturbatella* (Hübner, [1819])

One on the roadside at Lamaload on 17th June (SHH).

Steve Hind

40.003 *Mompha lacteella* (Stephens, 1834)

One at Higher Poynton on 13th June, one on 14th June, then two more there on 23rd June (SHH). Since 2013, this species has been recorded only at Higher Poynton.

40.011 *Mompha langiella* (Hübner, 1796)

One adult at Dibbinsdale Nature Reserve on 24th May (PHo). Also, a mine at Alderley Edge on 30th May and two at Wildboarclough on 24th June, all on Enchanter's Nightshade (*Circaea lutetiana*) (SHH).



Steve Hind



Paul Hopkins



42.002 *Stathmopoda pedella* (Linnaeus, 1761)

One along the roadside at Fanshawe on 23rd June (SHH) and one at Handbridge on 24th June (KP). Also one on 25th June at Bromborough (PHo). There had been only five previous Cheshire records.

Kevin Peace

45.008 **Yarrow Plume** *Gillmeria pallidactyla* (= *Platyptilia pallidactyla*) (Haworth, 1811)

One at Boughton Heath Allotments on 24th June (CJ) and one at Pensby on an unspecified date in 2020 (AC).



Clive Jones



45.009 **Tansy Plume** *Gillmeria ochrodactyla* (= *Platyptilia ochrodactyla*) ([Denis & Schiffermüller], 1775). One at Handbridge on 22nd June (KP). Only the third record since 1997.

Kevin Peace

45.011 **Brindled Plume** *Amblyptilia punctidactyla* (Haworth, 1811)
One at Boughton Heath Allotments on 15th June (CJ). The first Cheshire record since 1887.



Clive Jones

45.013 **Twin-spot Plume** *Stenoptilia bipunctidactyla* (Scopoli, 1763)
Well over 21 at Romiley on 9th June (AB), one at Higher Poynton on 22nd June and another there on 26th June (SHH)

45.037 **Dusky Plume** *Oidaematophorus lithodactyla* (Treitschke, 1833)
One at Higher Bebington on 11th August (CD).

47.006 *Epermenia falciformis* (Haworth, 1828)
One at Little Neston on 14th August (SK).
This species is new to VC58.



Simon Knight

48.007 **Apple Leaf Skeletonizer** *Choreutis pariana* (Clerck, 1759)
One larva on apple at Mottram St Andrew on 4th September and two larvae on crab apple at Lostock Green on 14th October (SHH).

49.021 *Ptycholomoides aeriferana* (Herrich-Schäffer, 1851)

One at Waverton on 13th July (H&BC), one at Wildboarclough on 31st July (SHH) and one at Little Neston on 6th August (SK).

49.033 **Bilberry Tortrix** *Aphelia viburnana* ([Denis & Schiffermüller], 1775)

Two at Wood Moss on 2nd June (SHH)

49.035 *Clepsis senecionana* (Hübner, [1819])

One adult on roadside verge at Pym Chair on 29th May (SHH) and a larva on cowberry at Bosley Cloud on 11th October (SHH, KM, BS)

49.042 *Neosphaleroptera nubilana* (Hübner, [1799])

Four netted from hawthorn hedge at Tabley on 13th June (SHH), one confirmed by genitalia examination.

49.047 *Eana incanana* (Stephens, 1852)

One on 26th June and another on 26th July at Bromborough (PHo), confirmed by genitalia examination.

49.061 *Acleris holmiana* (Linnaeus, 1758)

One at Henbury on 28th July (TW).

49.063 *Acleris bergmanniana* (Linnaeus, 1758)

One at Tattenhall on 14th June (KH).

49.073 *Acleris schalleriana* (Linnaeus, 1761)

One female at Alsager on 6th November (MD), confirmed by genitalia examination.

This species is new to VC58.

49.082 *Acleris hyemana* (Haworth, 1811)

Two at Pensby on an unspecified date in 2020 (AC).

49.084 *Acleris notana* (Donovan, 1806)

One at Peckforton Hill on 31st July (MRW), confirmed by genitalia examination and a few larvae on birch at Danes Moss on 9th September (SHH, BS).

49.096 *Hysterophora maculosana* (Haworth, 1811)

One flying in bluebells in late afternoon sunshine at Wildboarclough on 19th May (A&JB).



Alison & Julian Borrow

49.128 *Aethes rubigana* (Treitschke, 1830)
One at Burwardsley on 13th July (MRW).

49.155 *Hedya salicella* (Linnaeus, 1758)
One at Waverton on 25th June (H&BC) and one at Sale on 12th July (JPS).

49.158 *Hedya ochroleucana* (Frölich, 1828)
One at Wallasey on 7th July (CS).

49.178 *Stictea mygindiana* ([Denis & Schiffermüller], 1775)
A larva on cowberry at Bosley Cloud on 11th October (SHH, KM, BS) and tenanted larval spinning on cowberry at Brushes Valley on 17th November (BS).

49.188 *Endothenia marginana* (Haworth, 1811)
One netted from amongst plantains at Peckmill Bottoms on 14th May, confirmed by genitalia examination and one off ribwort plantain at Styperson on 13th August (SHH). The pale hindwing was noted.

49.191 *Endothenia nigricostana* (Haworth, 1811)
One on hazel on 25th May and two on meadowsweet, blackcurrant and hazel on 2nd June at Sale (JPS). One at Gowy Meadows CWT on 8th June (SWH), taking the total number of Cheshire records for this species to twelve.



John Shaughnessy

49.193 *Endothenia quadrimaculana* (Haworth, 1811)
One at the River Weaver, Davenham on 22nd June (GO) and one at Wildboardclough on 13th July (A&JB).



Greg Osborn

49.197 *Bactra robustana* (Christoph, 1872)
Two in the observatory garden at Hilbre Island on 9th August (GB), one female confirmed by genitalia examination. Only the second Cheshire record since 1999.

49.222 *Rhopobota ustomaculana* (Curtis, 1831)
Mines on cowberry at Bosley Cloud on 11th October (SHH, KM, BS). No Cheshire records in the twentieth century, but this takes the number since 2013 to twelve.

49.225 *Spilonota laricana* (Heinemann, 1863)

Three near larch on 24th June and one on 17th July, at Wildboarclough (SHH), one confirmed one each date by genitalia examination. One at Peckforton Hill on 31st July (MRW), confirmed by genitalia examination. Before 2020, there had only been seven Cheshire records after 1955.

49.228 *Epinotia sordidana* (Hübner, [1824])

One male at Alsager on 4th October (MD), confirmed by genitalia examination. Only the second Cheshire record since 1981.

49.231 *Epinotia brunnichana* (Linnaeus, 1767)

Two (one male and one female) at Peckforton Hill on 18th July (MRW), confirmed by genitalia examination.



Michael Whiteside

49.238 **Willow Tortrix** *Epinotia cruciana* (Linnaeus, 1761)

One at Higher Poynton on 22nd June (SHH).



Steve Hind

49.244 *Epinotia subocellana* (Donovan, 1806)

One at Gowy Meadows CWT on 22nd June (SWH).

49.251 *Epinotia rubiginosana* (Herrich-Schäffer, 1851)

One at Higher Poynton on 14th June and one at Wildboarclough on 24th June (SHH) and one at Alsager on 23rd June (MD).

49.252 *Epinotia tedella* (Clerck, 1759)

One at Higher Poynton on 28th May (SHH).

49.257 **Larch Tortrix** *Zeiraphera griseana* (Hübner, [1799])

One at Wildboarclough on 24th June (SHH), confirmed by genitalia examination. Only the second Cheshire record since 1997.

49.264 *Eucosma obumbratana* (Lienig & Zeller, 1846)

One at Ellesmere Port on 11th July (HJ), confirmed by genitalia examination.

49.283 *Gypsonoma aceriana* (Duponchel, [1843])

One larval tube at Thornton-le-Moors on 21st May (SWH) and one at Elton on 25th June (MB),

SWH).

49.285 *Epiblema scutulana* ([Denis & Schiffermüller], 1775)

One on 25th May and one on 2nd June at Wildboardclough (A&JB).

49.289 *Epiblema costipunctana* (Haworth, 1811)

Four at Swettenham on 9th June (SHH) and two pink-red larvae inside base of stem, rootstock of ragwort at Sale on 20th October (BS).



Ben Smart

Steve Hind

49.309 *Dichrorampha plumbana* (Scopoli, 1763)

One at Ellesmere Port on 20th May (HJ), confirmed by genitalia examination and two off yarrow along the roadside at Kettlethulme on 15th June (SHH), one of which was confirmed by genitalia examination.

49.315 *Dichrorampha simpliciana* (Haworth, 1811)

One at Ellesmere Port on 7th August 2020 (HJ), confirmed by genitalia examination. Only the fifth Cheshire record.

49.318 *Dichrorampha vancouverana* (= *Dichrorampha gueneana*) (McDunnough, 1935)

Two at Waverton on 30th July (H&BC), confirmed by genitalia examination. Only the sixth Cheshire record.

49.320 *Dichrorampha alpinana* (Treitschke, 1830)

Two on ox-eye daisy at Chorlton on 11th June (RB), two on the Middlewood Way, Higher Poynton on 16th June (SHH) - one female confirmed by genitalia examination - and one at Waverton on 14th August (H&BC), also confirmed by genitalia examination.

49.321 *Dichrorampha petiverella* (Linnaeus, 1758)

One on roadside yarrow at Sproston on 12th July (SHH)

49.324 **Pea Moth** *Cydia nigricana* (Fabricius, 1794)

One larval in bush vetch pod at Danes Moss on 9th September (SHH, BS).

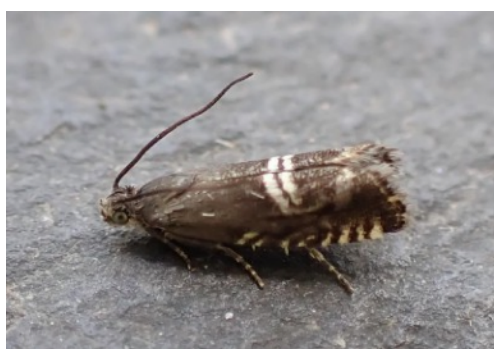


Ben Smart

49.335 **Spruce Seed Moth** *Cydia strobilella* (Linnaeus, 1758)
One at Gee Cross on 8th May (AM). Only the second Cheshire record.



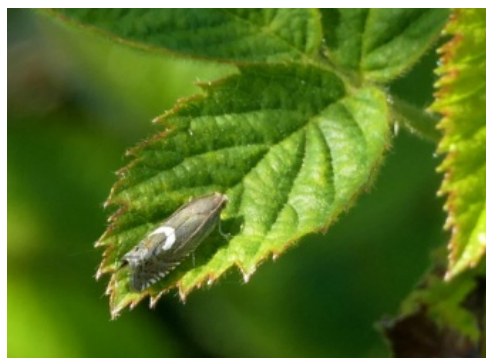
Ant Marriott



49.349 *Grapholita internana* (Guenée, 1845)
One flying in sunshine at Wildboarclough on 21st
May (A&JB).

Alison & Julian Borrow

49.351 *Grapholita lunulana* ([Denis &
Schiffermüller], 1775)
One at Romiley Golf Course on 6th May
(AB).



Andy Bissitt

49.357 **Plum Fruit Moth** *Grapholita funebrana* (Treitschke, 1835)

One on 28th May and three on 23rd June at Bromborough (PHo), confirmed by genitalia examination.



49.365 *Pammene albuginana* (Guenée, 1845)

One on 18th May and one on 28th May, both to ALS pheromone lure for *Grapholita funebrana* at Bromborough (PHo), both confirmed by genitalia examination.

This species is new to VC58.

Paul Hopkins

49.366 *Pammene obscurana* (Stephens, 1834)

One male on 19th May and another male on 26th May at Alsager (MD), confirmed by genitalia examination. Only four previous Cheshire records.

49.373 *Pammene spiniana* (Duponchel, [1843])

One at Waverton on 7th August (H&BC), confirmed by genitalia examination. This is the third Cheshire record and the first since 1990.

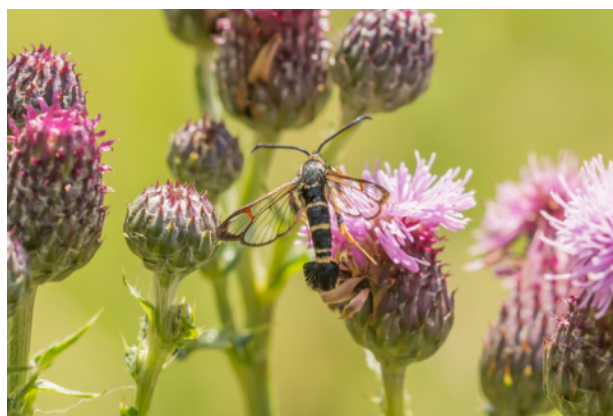
49.381 *Strophedra weirana* (Douglas, 1850)

One at Bromborough on 28th May (PHo), confirmed by genitalia examination. One at Alsager on 24th June (MD). Twelve previous Cheshire records.

52.012 Yellow-legged Clearwing

Synanthedon vespiformis (Linnaeus, 1761)

One at Etherow Country Park on 28th May (AM). Five previous Cheshire records.



Ant Marriott



62.039 *Apomyelois bistriatella* (Hulst, 1887)

One larva inside *Daldinia* fungi on gorse at Thurstaston Common on 23rd February (CW). Bred through, the adult emerged on 29th March. This is only the third Cheshire record.

Clive Washington

62.059 *Phycitodes saxicola* (Vaughan, 1870)

One male and one female in McAfee's paddock at Hilbre Island on 9th August (GB), confirmed by genitalia examination.

62.062 **Indian Meal Moth** *Plodia interpunctella* (Hübner, [1813])

One at Little Neston on 30th May (GJ) and two at Brookside Garden Centre, Poynton on 22nd October (SAO).

63.005 *Pyrausta despicata* (Scopoli, 1763)

One at Higher Poynton on 9th May (SHH), one at Whaley Bridge on 26th June (AS) and one at Bowdon, Altrincham on 18th July (RH). Only two previous records in Cheshire since 1964.

63.007 *Pyrausta purpuralis* (Linnaeus, 1758)

One at Newchurch Common on 20th May (PB), one at Burwardsley on 9th August (MRW) and one at Elton on 12th August (MB, SWH).

63.016 *Anania fuscalis* ([Denis & Schiffermüller], 1775)

One at Little Sutton on 12th June (HJ). Only the fourth Cheshire record since 1955.



63.017 *Anania lancealis* ([Denis & Schiffermüller], 1775)

One at the River Weaver, Davenham on 22nd June (GO). The sixth Cheshire record.

Greg Osborn

63.021 *Anania terrealis* (Treitschke, 1829)

One on 22nd June and another on 12th July at Dane Road, Sale (JPS). Three of only four previous Cheshire records were from the same site.



John Shaughnessy

63.022 *Anania crocealis* (Hübner, 1796)

One at Wallasey on 24th June (RBi), one on 30th June and another on 14th September at Oxmoor Ponds and Wood LNR(PFH, DWE).



63.046 *Duponchelia fovealis* Zeller, 1847

One at Bollin Valley, Prestbury on 17th September (AE). Only four previous Cheshire records.

Andrew Emmerson

63.077 *Chilo phragmitella* (Hübner, [1810])

One at Burwardsley on 27th June (MRW) and one at Great Sutton on 2nd August (MBe).

63.099 *Catoptria pinella* (Linnaeus, 1758)

One at Shavington on 31st July (RB).

63.117 **Ringed China-mark** *Parapoynx stratiotata* (Linnaeus, 1758)

One at Hoole on 16th August (AN).



63.120 *Schoenobius gigantella* ([Denis & Schiffermüller], 1775)

One at Higher Poynton on 30th July (SHH).

This species is new to VC58.

Steve Hind

65.003 **Barred Hook-tip** *Watsonalla cultraria* (Fabricius, 1775)

One at Higher Poynton on 7th May (SHH), at Macclesfield on 31st July (H&LG), at Wildboarclough on 6th August (A&JB) and at rest on a dry stone wall at Taxal Moor on 9th September (AS). These four take the total number of Cheshire records for this species to twenty, all recorded since 2003.



Angie Seymour

65.016 **Yellow Horned** *Achlya flavicornis* (Linnaeus, 1758)

One at Burwardsley on 10th March (MRW), one at Higher Poynton on the same day (SHH), two at Whaley Bridge on 13th March (AS) and one at Wildboarclough on 14th March (A&JB).

69.004 **Convolvulus Hawk-moth** *Agrius convolvuli* (Linnaeus, 1758)

One at Upton, Birkenhead on 10th September (Anon) and one at Tytherington on 14th September (SAO).

69.005 **Death's-head Hawk-moth** *Acherontia atropos* (Linnaeus, 1758)

Three larvae were found at Denhall Quay and Decca Pools - on 27th August (CWe) and on 28th August (DK), (RW)- the first Cheshire records since 2008.

69.007 **Pine Hawk-moth** *Sphinx pinastri* (Linnaeus, 1758)

One at Macclesfield on 26th June (H&LG). Only the seventh Cheshire record, all since 2004.



Heather & Les Green

70.002 **Purple-bordered Gold** *Idaea muricata* (Hufnagel, 1767)

One on 23rd June and three on 30th June at Wybunbury (RB). A single stronghold for this species.

70.004 **Least Carpet** *Idaea rusticata* ([Denis & Schiffermüller], 1775)

One at Cheadle Hulme on 6th July (SPC). Only the eighth Cheshire record; the first was also at Cheadle Hulme.



Stephen Collins

70.006 **Dwarf Cream Wave** *Idaea fuscovenosa* (Goeze, 1781)

One at Heswall on 24th June (JJ).



John Jakeman

70.009 **Satin Wave** *Idaea subsericeata* (Haworth, 1809)

One on 1st June and another on 16th June at Little Neston(GJ).

70.026 **Smoky Wave** *Scopula ternata* Schrank, 1802

Ten at Wood Moss on 2nd June and one at Lamaload on 17th June (SHH).

70.027 **Cream Wave** *Scopula floslactata* (Haworth, 1809)
One at Davenham on 9th May (GO).



Greg Osborn

70.038 **Vestal** *Rhodometra sacraria* (Linnaeus, 1767)
One at Frodsham on 15th August (RGB), one at Cheadle Hulme on 15th September (SPC), one at Wallasey on 17th September (RBI) and one at Bromborough on the same day (PHO).

70.046 **Oblique Carpet** *Orthonama vittata* (Borkhausen, 1794)
One at Marbury Country Park on 20th August (LB).

70.051 **Red Twin-spot Carpet** *Xanthorhoe spadicearia* ([Denis & Schiffermüller], 1775)
One on the roadside verge at Pym Chair on 29th May (SHH).

70.055 **Large Twin-spot Carpet** *Xanthorhoe quadrifasiata* (Clerck, 1759)
One at Alsager on 9th July (MD), four at the River Weaver, Davenham on 17 July, then another one there on 7th August (GO).

70.068 **Beautiful Carpet** *Mesoleuca albicillata* (Linnaeus, 1758)
One at Davenham on 24th June (GO) and one at Alsager on 25th June (MD)

70.104 **Devon Carpet** *Lampropteryx otregiata* (Metcalf, 1917)
One at Higher Poynton on 29th May, one at Lamaload on 17th June (SHH), one on 8th August and another on 10th August at Davenham (GO).

70.109 **Autumnal Moth** *Epirrita autumnata* (Borkhausen, 1794)
One at Alsager on 20th October (MD) and one at Hazel Grove on 29th October (JWR), confirmed in both cases by genitalia examination.

70.115 **Welsh Wave** *Venusia cambrica* (Curtis, 1839)
One at Wildboardclough on 24th June (SHH). Only the seventh Cheshire record since 1999.



Steve Hind

70.121 **Scallop Shell** *Rheumaptera undulata* (Linnaeus, 1758)

One along the roadside at Fanshawe on 23rd June (SHH), one at Elworth on 1st July (PFA) and one at Marple on 2nd July (MPS).

70.123 **Tissue** *Triphosa dubitata* (Linnaeus, 1758)

Two on 15th November (MRW) and six on 10th December (CJ) at Queens Parlour cave, Raw Head.



Michael Whiteside

70.134 **Barred Rivulet** *Perizoma bifaciata* (Haworth, 1809)

One at Bromborough on 30th July (PHo) and one at Little Sutton on 14th August (HJ).

70.143 **Sloe Pug** *Pasiphila chloerata* (Mabille, 1870)

One at Little Sutton on 4th July (HJ), confirmed by genitalia examination.

70.146 **Haworth's Pug** *Eupithecia haworthiata* (Doubleday, 1856)

One at Burwardsley on 26th June (MRW). Only the fourth Cheshire record since 1949; three have come from the same site.



Michael Whiteside

70.150 **Toadflax Pug** *Eupithecia linariata* ([Denis & Schiffermüller], 1775)

One at New Brighton on 29th August (PI&PW).



Tricia Wain

70.159 **Cypress Pug** *Eupithecia phoeniceata* (Rambur, 1834)
One at Bromborough on 22nd September (PHo). Only the second Cheshire record.



Paul Hopkins

70.162 **Dwarf Pug** *Eupithecia tantillaria* (Boisduval, 1840)
One at Little Neston on 16th May (SK), at Heswall on 25th May (JJ) and again at Little Neston on 25th May and 29th May (GJ), the one on the last date confirmed by genitalia examination.

70.163 **Larch Pug** *Eupithecia lariciata* (Freyer, 1841)
One on 6th June (A&JB) and more on 17th July, 31st July (including one melanic female, confirmed by genitalia examination) and 14th August (SHH), all at Wildboardclough.



Alison & Julian Borrow

70.164 **Pauper Pug** *Eupithecia egenaria* (Herrich-Schäffer), 1848
One male at Alsager on 25th May (MD), confirmed by genitalia examination. Only the fourth Cheshire record, all since 2018 and all but one from the same site.

70.166 **Plain Pug** *Eupithecia simpliciata* (Haworth, 1809)
One at Little Sutton on 13th July (HJ), confirmed by genitalia examination, and one at Alsager on 30th July (MD).

70.169 **Angle-barred Pug** *Eupithecia innotata* (Hufnagel, 1767)

One at Pensby on an unspecified date in 2020 (AC).

70.188 **Bordered Pug** *Eupithecia succenturiata* (Linnaeus, 1758)

One at Macclesfield on 26th June (H&LG), one at Upton, Wirral on 6th August (HD) and one at Hoole on 17th August (AN).

70.191 **Manchester Treble-bar** *Carsia sororiata* (Hübner, [1813])

All recorded at Wybunbury (RB), there were seven on 23rd June, 25 on 30th June, ten on 6th July and four on 12th July.

70.195 **Streak** *Chesias legatella* ([Denis & Schiffermüller], 1775)

One at Alsager on 19th October (MD).

70.203 **Orange Underwing** *Archiearis parthenias* (Linnaeus, 1761)

One at Poynton on 22nd March (Alex Cropper), one at Ince Park on 25th March (MB, SWH), another on the same day and one on 7th April at Congleton Edge (JHS).



70.206 **Clouded Magpie** *Abraxas sylvata* (Scopoli, 1763)

One at Higher Bebington on 11th August (CD).

Clive Donaldson

70.215 **V-Moth** *Macaria wauaria* (Linnaeus, 1758)

One at Burton on 1st July (BSB). Only the second Cheshire record since 2008.



Barry Barnacal

70.231 **Lilac Beauty** *Apeira syringaria* (Linnaeus, 1758)

One at Burwardsley on 14th June (MRW), one at Wildboarclough on 24th June (A&JB), one at Handbridge on 26th June (KP) and one at Higher Poynton on 3rd July (SHH).

70.264 **Satin Beauty** *Deileptenia ribeata* (Clerck, 1759)

One at Bromborough on 24th June (PHo), one at Peckforton Hill on 25th June (MRW) and one at Wildboarclough on 17th July (SHH).

70.292 Grey Scalloped Bar *Dyscia fagaria* (Thunberg, 1784)

One at Hazel Grove on 4th June (JWR). Only the third Cheshire record since 1975.



John Rayner

70.295 Grass Wave *Perconia strigillaria* (Hübner, [1787])

One on 24th May and one on 16th June, both at Abbots Moss (PB) and six at Little Budworth Common on 30th May (SR).



Paul Brewster

70.303 Little Emerald *Jodis lactearia* (Linnaeus, 1758)

One at Frodsham on 19th May (RGB), one at Waverton on 25th May (H&BC) and one at Wistaston on 13th July (JL).

71.010 Marbled Brown *Drymonia dodonaea* ([Denis & Schiffermüller], 1775)

One at Burwardsley on 3rd May (MRW). Only the sixth Cheshire record, three of which have been at the same site.

72.007 Beautiful Snout *Hypena crassalis* (Fabricius, 1787)

One at Wildboarclough on 13th June (A&JB), one at Bowdon, Altrincham on 21st June (RH) and one at Alsager on 13th July (MD).

72.023 Clouded Buff *Diacrisia sannio* (Linnaeus, 1758)

One male and one female at Abbots Moss on 16th June (PB)

72.038 Four-dotted Footman *Cybosia mesomella* (Linnaeus, 1758)

One at Abbots Moss on 16th July (PB).

72.042 Red-necked Footman *Atolmis rubricollis* (Linnaeus, 1758)

One at Lamaload on 17th June (SHH) and one at Sale on 24th June (JPS).

72.060 **Marsh Oblique-barred** *Hypenodes humidalis* (Doubleday, 1850)

Reported at Wybunbury on 30th June, 6th July, 12th July and 20th July (RB) and at Macclesfield on 31st July (H&LG).

72.074 **Beautiful Marbled** *Eublemma purpurina* ([Denis & Schiffermüller], 1775)

One at Antrobus on 9th August (LB).

This species is New to VC58.



Liz Bentham

73.037 **Dark Dagger** *Acronicta tridens* ([Denis & Schiffermüller], 1775)

One male, resting on a fence-post during day at Burton Mere Wetlands RSPB (West) on 13th July (GJ), confirmed by genitalia examination.

73.042 **Light Knot Grass** *Acronicta menyanthidis* (Esper, 1798)

One on 7th May and another on 21st May at Wildboarclough (A&JB), one at Elton on 1st June (MB, SWH) and a late, but correctly identified one - presumably a second brood- at Macclesfield on 14th August (H&LG).



Heather & Les Green

73.052 **Shark** *Cucullia umbratica* (Linnaeus, 1758)

One at Disley on 25th May (NE), one at Upton, Wirral on 13th June (HD), one at Coole Fishery, near Audlem, on 23rd June (PG) and one at Henbury on 13th July (TW).

73.053 **Chamomile Shark** *Cucullia chamomillae* ([Denis & Schiffermüller], 1775)

One at Elworth on 10th April (PFA), one at Waverton on 16th April (H&BC) and one at Wybunbury on 2nd May (AML).

73.070 **Bordered Sallow** *Pyrrhia umbra* (Hufnagel, 1766)

One at Wallasey on 29th May (APG).

73.076 **Scarce Bordered Straw** *Helicoverpa armigera* (Hübner, [1808])

One at Willaston, Nantwich on 20th August (DT) and one at Burwardsley on 22nd September (MRW).



73.100 **Silky Wainscot** *Chilodes maritima* (Tauscher, 1806)

One at Bromborough on 29th May (PHo), one at Boughton Heath Allotments on 16th July (CJ), one at Elton on 26th July (MB, SWH), one at Upton, Wirral on 9th August (HD) and five at Burton Mere Wetlands RSPB (East) on 16th August (GJ).

Clive Jones

73.120 **Dusky Sallow** *Eremobia ochroleuca* ([Denis & Schiffermüller], 1775)

One at Duckington on 25th July (FMcC). Only four previous Cheshire records.



Fraser McConnell

73.126 **Saltern Ear** *Amphipoea fucosa* (Freyer, 1830)

One in the observatory garden at Hilbre Island on 9th August (GB), confirmed by genitalia examination. DNA-barcoded.

73.127 **Large Ear** *Amphipoea lucens* (Freyer, 1845)

Two at Wildboarclough on 14th August (SHH) and another (female) on the same day at Alsager (MD), and one at Burwardsley on 17th August (MRW). All confirmed by genitalia examination.

73.128 **Ear Moth** *Amphipoea oculea* (Linnaeus, 1761)

One at Burwardsley on 13th August (MRW), one (male) at Little Neston on 14th August (GJ) and another (male) at Alsager on 16th August (MD).

All confirmed by genitalia examination.

73.137 **Fen Wainscot** *Arenostola phragmitidis* (Hübner, [1803])

One at Moreton on 28th July (GC).



Graham Connolly

73.139 **Twin-spotted Wainscot** *Lenisa geminipuncta* (Haworth, 1809)

One at Oxmoor Ponds and Wood LNR on 15th August (PFH, DWE).



Paul Hillyer

73.155 **Clouded Brindle** *Apamea epomidion* (Haworth, 1809)

One at Cheadle Hulme on 24th June (SPC) and one at Elton on 1st July (MB, SWH).



Stephen Collins

73.200 **Tawny Pinion** *Lithophane semibrunnea* (Haworth, 1809)
One at Burwardsley on 24th April (MRW).

73.211 **Angle-striped Sallow** *Enargia paleacea* (Esper, 1791)
One at Tytherington on 23rd July (Jeanette & Dave Maddy) and one at Willaston, Nantwich on 23rd August (DT). Following only four previous Cheshire records; these are the first since 2010.



Jeanette & Dave Maddy

73.213 **Olive** *Ipimorpha subtusa* ([Denis & Schiffermüller], 1775)
One at Heatley, near Aston on 29th July (EH) and one at Little Sutton on 9th August (HJ).

73.220 **Minor Shoulder-knot** *Brachylomia viminalis* (Fabricius, [1777])
One at Peckforton Hill on 18th July (MRW).

73.232 **Northern Deep-brown Dart** *Aporophyla lueneburgensis* (Freyer, 1848)
One at Alsager on 14th September (MD) and one at Shavington on 20th September (RB).

73.234 **Brindled Ochre** *Dasypolia templi* (Thunberg, 1792)
One on 14th October and another on 5th November at Wildboardclough (A&JB). These take the number of Cheshire records since 2008 to seven, among a total of eighteen.



Alison & Julian Borrow

73.243 **Blossom Underwing** *Orthosia miniosa* ([Denis & Schiffermüller], 1775)
One at Little Neston on 11th April (SK). Only the second record in Cheshire since 1972, taking the total to nine.

73.252 **Hedge Rustic** *Tholera cespitis* ([Denis & Schiffermüller], 1775)
One at Little Neston on 1st August (GJ), another there on 9th August (SK), one at Burton Point on 7th August (RM) and one at Burton Mere Wetlands RSPB (East) on 16th August (GJ).

73.273 **Shears** *Hada plebeja* (Linnaeus, 1761)
One at Hoole on 28th May (AN).

73.282 **Varied Coronet** *Hadena compta* ([Denis & Schiffermüller], 1775)

One at Elworth on 10th June (PFA), one at Willaston, Nantwich on 15th June (DT), one at Davenham on 19th June (GO) and one at Shavington on 23rd June (RB). These join only ten previous Cheshire records, all but one since 2006.



Greg Osborn

73.290 **Brown-line Bright-eye** *Mythimna conigera* ([Denis & Schiffermüller], 1775)

One at Wildboardclough on 8th August (A&JB).



73.299 **Shore Wainscot** *Mythimna litoralis* (Curtis, 1827)
One at Wallasey on 30th June (APG). Only the second Cheshire record since 1995.

Alan Graham

73.307 **Pearly Underwing** *Peridroma saucia* (Hübner, [1808])

One at Bromborough on 12th June (ES) and one at Higher Bebington on 28th August (CD).

73.308 **Portland Moth** *Actebia praecox* (Linnaeus, 1758)
One at New Brighton on 28th August (PI&PW). The first Cheshire record since 1969.



Phil Ish

73.316 **Light Feathered Rustic** *Agrotis cinerea* ([Denis & Schiffermüller], 1775)
One at Wildboarclough on 21st May (A&JB). **New to VC58.** (See photo on title page).

73.320 **Heart and Club** *Agrotis clavis* (Hufnagel, 1766)
One at Moreton on 3rd July (GC). Only the third record since 2008.

73.322 **Archer's Dart** *Agrotis vestigialis* (Hufnagel, 1766)
One at Heswall on 30th July (JJ) and one at Wallasey on 12th August (CS).



73.324 **Crescent Dart** *Agrotis trux* (Hübner, [1824])
One at Upton, Chester on 12th July (RW). Only the fifth Cheshire record, the first since 1990.



Roger Wilkinson

John Jakeman

73.335 **Fen Square-spot** *Diarsia florida* (Schmidt, 1859)
Two on 21st June, three on 23rd June and two on 25th June at Higher Poynton; three on 24th June and three on 17th July at Wildboarclough (SHH).



73.355 **Neglected Rustic** *Xestia castanea* (Esper, 1798)
One at Wilmslow on 11th August (Celia Reed) and another nearby on 12th August (TL). One at Wildboarclough on 28th August (A&JB) and one at Burwardsley on 22nd September (MRW).

Celia Reed

73.360 **Triple-spotted Clay** *Xestia ditrapezium* ([Denis & Schiffermüller], 1775)
One on 12th June, one on 24th June and another on 06th July at Handbridge (KP), one at Little Neston on 23rd June (SK), and two at Burwardsley on 30th June (MRW).

Correction to the 2019 report:

Page 28: The *Grapholita lobarzewskii* record and photo refers to *Cydia fagiglandana*.

Migrant Species in 2020

The following table shows the species of migrant moths that were recorded in Cheshire in 2020.

ABH	Common Name	Taxon	Records	Moths	Earliest Date	Latest Date
18.001	Diamond-back Moth	<i>Plutella xylostearna</i>	401	815	24-Mar	23-Nov
63.031	Rusty-dot Pearl	<i>Udea ferrugalis</i>	20	20	1-Jun	12-Nov
63.046	-	<i>Duponchelia fovealis</i>	1	1	17-Sep	17-Sep
63.048	-	<i>Palpita vitrealis</i>	6	6	14-Aug	21-Nov
63.052	Rush Veneer	<i>Nomophila noctuella</i>	4	4	20-May	6-Oct
69.004	Convolvulus Hawk-moth	<i>Agrius convolvuli</i>	2	2	10-Sep	14-Sep
69.005	Death's-head Hawk-moth	<i>Acherontia atropos</i> * (L)	3	3	27-Aug	28-Aug
69.010	Humming-bird Hawk-moth	<i>Macroglossum stellatarum</i>	36	39	20-Apr	16-Oct
70.038	Vestal	<i>Rhodometra saccharia</i>	5	5	15-Aug	19-Sep
72.074	Beautiful Marbled	<i>Eublemma purpurina</i>	1	1	9-Aug	9-Aug
73.015	Silver Y	<i>Autographa gamma</i>	1643	5000	13-Jan	26-Dec
73.076	Scarce Bordered Straw	<i>Helicoverpa armigera</i>	2	2	20-Aug	22-Sep
73.243	Blossom Underwing	<i>Orthosia miniosa</i>	1	1	11-Apr	11-Apr
73.307	Pearly Underwing	<i>Peridroma saucia</i>	2	2	12-Jun	28-Aug
73.327	Dark Sword-grass	<i>Agrotis ipsilon</i>	133	155	14-Jun	16-Nov

* (L) = Larvae.

Palpita vitrealis



Jeanette & Dave Maddy

Species new for their respective 10km squares in 2020

Here is a summary of the species that were new for their respective 10km squares in 2020. A further 552 new hectad records were added during 2020. The squares with the biggest increases in new species were SJ39 (New Brighton and Liscard) with 42, SJ89 (east of Sale) with 32, SJ96 (Wildboarclough) with 75 and SK08 (Whaley Bridge) with 36.

New to five hectads in 2020 was the Sycamore *Acronicta aceris*, which started to re-colonise the county in 2009. The Box-tree Moth *Cydalima perspectalis* continues to spread across the county, having been recorded in nearly 40% of the Cheshire hectads.



Some of the squares are only partially in VC58 and although species may have been recorded in adjacent counties, they are new for our side of the boundary. The following are listed in the Agassiz, Beavan & Heckford taxonomic order for each 10km square.

SE00

Flounced Chestnut *Agrochola helvola*.

SJ18

Oegoconia quadripuncta; *Crassa unitella*; *Lozotaeniodes formosana*; *Crambus pascuella*; *Catoptria falsella*; Water Veneer *Acentria ephemerella*; Small Rivulet *Perizoma alchemillata*; Narrow-winged Pug *Eupithecia nanata*; Currant Pug *Eupithecia assimilata*; Scarce Footman *Eilema complana*; Saltern Ear *Amphipoea fucosa*.

SJ27

Nematopogon swammerdamella; *Incurvaria masculella*; *Psychoides filicivora*; *Caloptilia populetorum*; Azalea Leaf Miner *Caloptilia azaleella*; *Prays ruficeps*; Hawthorn Moth *Scythropia crataegella*; Parsnip Moth *Depressaria radiella*; *Bryotropha terrella*; Variegated Golden Tortrix *Archips xylosteana*; *Lozotaeniodes formosana*; *Acleris literana*; *Cochylis atricapitana*; *Eudemis profundana*; Lunar Hornet Moth *Sesia bembeciformis*; *Dioryctria abietella*; *Phycitodes binaevella*; Indian Meal Moth *Plodia interpunctella*; *Palpita vitrealis*; *Eudonia truncicolella*; Death's-head Hawk-moth *Acherontia atropos*; Dwarf Pug *Eupithecia tantillaria*; Hedge Rustic *Tholera cespitis*.

SJ28

Swammerdamia pyrella; Cypress Tip Moth *Argyresthia cupressella*; *Apomyelois bistriatella*; Marbled White Spot *Deltote pygarga*; Fen Wainscot *Arenostola phragmitidis*.

SJ29

Brindled Beauty *Lycia hirtaria*; Blackneck *Lygephila pastinum*; Sycamore *Acronicta aceris*; Glaucous Shears *Papestra biren*.

SJ36

Brown House-moth *Hofmannophila pseudospretella*; *Eucosma campoliliana*; *Pammene fasciana*; Bee Moth *Aphomia sociella*; *Euzophera pinguis*; Buff Footman *Eilema depressa*; Dingy Footman *Eilema griseola*; Beautiful Hook-tip *Laspeyria flexula*; Sycamore *Acronicta aceris*; Vine's Rustic *Hoplodrina ambigua*; Small Ranunculus *Hecatera dysodea*.

SJ37

Ectoedemia louisella; *Ectoedemia decentella*; Case-bearing Clothes Moth *Tinea pellionella*; *Aproaerema anthyllidella*; *Batrachedra praeangusta*; *Coleophora alticolella*; *Epermenia falciformis*; *Gypsonoma oppressana*; Lunar Hornet Moth *Sesia bembeciformis*; *Anania fuscalis*; Box-tree Moth *Cydalima perspectalis*; Scarce Footman *Eilema complana*; Blossom Underwing *Orthosia miniosa*.

SJ38

Stigmella atricapitella; *Psychoides filicivora*; *Caloptilia populetorum*; *Ypsolopha alpella*; *Coleophora artemisicolella*; *Stathmopoda pedella*; Grey Tortrix *Cnephasia stephensiana*; *Acleris laterana*; *Eulia ministrana*; Plum Fruit Moth *Grapholita funebrana*; *Pammene albuginana*; *Strophedra weirana*; *Acrobasis repandana*; *Ephestia woodiella*; Cypress Pug *Eupithecia phoeniceata*; Satin Beauty *Deileptenia ribeata*.

SJ39

Common Swift *Korscheltellus lupulina*; *Psychoides filicivora*; Cypress Tip Moth *Argyresthia cupressella*; Cyclamen Tortrix *Clepsis spectrana*; *Exapate congelatella*; *Hedya ochroleucana*; *Ancylis achatana*; *Notocelia rosaecolana*; *Dioryctria abietella*; *Euzophera pinguis*; *Phycitodes binaevella*; Meal Moth *Pyrallis farinalis*; Gold Triangle *Hypsopygia costalis*; *Anania perlucidalis*; *Anania crocealis*; *Crambus lathoniellus*; *Crambus perlella*; Water Veneer *Acentria ephemerella*; December Moth *Poecilocampa populi*; Vestal *Rhodometra sacraria*; Shaded Broad-bar *Scotopteryx chenopodiata*; Flame Carpet *Xanthorhoe designata*; Green Carpet *Colostygia pectinataria*; Brindled Pug *Eupithecia abbreviata*; Oak-tree Pug *Eupithecia dodoneata*; Freyer's Pug *Eupithecia intricata*; Mottled Pug *Eupithecia exigua*; Grey Pug *Eupithecia subfuscata*; Early Thorn *Selenia dentaria*; Sallow Kitten *Furcula furcula*; Pebble Prominent *Notodonta ziczac*; Muslin Moth *Diaphora mendica*; Orange Footman *Eilema sororcula*; Blackneck *Lygephila pastinum*; Sycamore *Acronicta aceris*; Treble Lines *Charanyca trigrammica*; Large Wainscot *Rhizodra lutosa*; Dark Chestnut *Conistra ligula*; Pine Beauty *Panolis flammea*; Powdered Quaker *Orthosia gracilis*; Dark Sword-grass *Agrotis ipsilon*; Scarce Silver-lines *Bena bicolorana*.

SJ45

Large Fruit-tree Tortrix *Archips podana*; Currant Clearwing *Synanthedon tipuliformis*; Gold Triangle *Hypsopygia costalis*; Dusky Sallow *Eremobia ochroleuca*.

SJ46

Ectoedemia heringella; *Hypatima rhomboidella*; *Psoricoptera gibbosella*; *Teleiodes luculella*; *Teleiopsis diffinis*; *Coleophora albidella*; *Mompha ochraceella*; *Stathmopoda pedella*; Brindled Plume *Amblyptilia punctidactyla*;

Isotrias rectifasciana; *Dichrorampha vancouverana*; *Pammene spiniana*; *Palpita vitrealis*; *Evergestis pallidata*; Black Arches *Lymantria monacha*; Suspected *Parastichtis suspecta*.

SJ47

Eriocrania unimaculella; *Eriocrania salopiella*; *Psychoides filicivora*; Willow Ermine *Yponomeuta rorrella*; *Zelleria hepariella*; *Cedestis subfasciella*; *Anacampsis populella*; *Coleophora lineolea*; *Endothenia nigricostana*; *Dichrorampha plumbana*; *Dichrorampha acuminatana*; *Dichrorampha simpliciana*; Six-belted Clearwing *Bembecia ichneumoniformis*; Large Tabby *Aglossa pinguinalis*; Pale Eggar *Trichiura crataegi*; Marbled White Spot *Deltote pygarga*; Light Knot Grass *Acronicta menyanthidis*; Feathered Ranunculus *Polymixis lichenea*.

SJ54

Small Yellow Underwing *Panemeria tenebrata*.

SJ55

Nemopogon clematella; *Argyresthia albistria*; *Bryotropha senectella*; *Coleophora flavipennella*; *Coleophora saxicolella*; *Coleophora striatipennella*; *Pammene regiana*; *Pyrausta purpuralis*; *Palpita vitrealis*; Muslin Footman *Nudaria mundana*; Large Ear *Amphipoea lucens*.

SJ56

Coleophora mayrella; Plum Tortrix *Hedya pruniana*; *Cydia fagiglandana*; Lunar Hornet Moth *Sesia bembeciformis*; *Euzophera pinguis*.

SJ57

Athrips mouffetella; *Aethes beatricella*; *Pammene regiana*.

SJ58

Twin-spotted Wainscot *Lenisa geminipuncta*.

SJ64

Bryotropha domestica; *Mompha propinquella*; *Blastobasis lacticolella*; *Epinotia bilunana*; Pine Leaf-mining Moth *Clavigesta purdeyi*; *Cydia fagiglandana*; *Ephestia woodiella*; Large Tabby *Aglossa pinguinalis*; *Agriphila geniculea*; Maple Pug *Eupithecia inturbata*; Black Arches *Lymantria monacha*; Scarlet Tiger *Callimorpha dominula*.

SJ65

Ypsolopha horridella; Leek Moth *Acrolepiopsis assectella*; *Brachmia blandella*; *Chrysoesthia drurella*; *Scrobipalpa acuminatella*; Pine Leaf-mining Moth *Clavigesta purdeyi*; Angle-striped Sallow *Enargia paleacea*; Small Ranunculus *Hecatera dysodea*.

SJ66

Stigmella samiatella; Azalea Leaf Miner *Caloptilia azaleella*; *Phyllocnistis saligna*; *Ypsolopha sequella*; *Tachystola acroxantha*; *Chrysoesthia sexguttella*; *Coleophora limosipennella*; *Coleophora lineolea*; *Mompha subbistrigella*; *Hypsopygia glaucinalis*; *Pyrausta purpuralis*; *Agriphila selasella*; *Catoptria falsella*; Chimney Sweeper *Odezia atrata*; Oak-tree Pug *Eupithecia dodoneata*; Yellow-barred Brindle *Acasis viretata*; Blackneck *Lygephila pastinum*; Sycamore *Acronicta aceris*; Grey Shoulder-knot *Lithophane ornitopus*; Small Ranunculus *Hecatera dysodea*.

SJ67

Stigmella assimilella; *Ectoedemia heringi*; *Roeslerstammia erxlebella*; *Phyllonorycter blancardella*; *Phyllonorycter lantanella*; *Phyllonorycter corylifoliella*; *Phyllonorycter viminiella*; *Phyllonorycter salicicolella*; *Phyllocnistis saligna*; Spindle Ermine *Yponomeuta cagnagella*; Willow Ermine *Yponomeuta rorrella*; Apple Leaf Skeletonizer *Choreutis pariana*; *Acleris laterana*; *Dichrorampha acuminatana*; Beautiful Marbled *Eublemma purpurina*; Varied Coronet *Hadena compta*.

SJ68

Stigmella sakhalinella; Hawthorn Moth *Scythropia crataegella*; *Batrachedra pinicolella*; *Gypsonoma sociana*; *Notocelia rosaecolana*; Spotted Shoot Moth *Rhyacionia pinivorana*; *Acrobasis repandana*; *Homoeosoma sinuella*; *Udea prunalis*; Orange Footman *Eilema sororcula*; Least Black Arches *Nola confusalis*.

SJ74

Micropterix calthella; *Stigmella sakhalinella*; *Stigmella trimaculella*; *Chrysoesthia drurella*; *Chrysoesthia sexguttella*; *Coleophora paripennella*; *Syndemis musculana*; *Acleris laterana*.

SJ75

Stigmella glutinosae; *Stigmella alnetella*; *Phyllonorycter blancardella*; *Phyllocnistis saligna*; Cherry Fruit Moth *Argyresthia pruniella*; *Coleophora violacea*; *Spuleria flavicaput*; *Mompha locupletella*; Carnation Tortrix *Cacoecimorpha pronubana*; *Aethes cnicana*; *Gypsonoma sociana*; Pine Leaf-mining Moth *Clavigesta purdeyi*; *Pammene aurana*; *Evergestis pallidata*; Northern Deep-brown Dart *Aporophyla lueneburgensis*.

SJ76

Phyllonorycter ulicicolella; *Plutella porrectella*; *Argyresthia semifusca*; Cherry Fruit Moth *Argyresthia pruniella*; *Batia lunaris*; *Agonopterix heracliana*; *Coleophora coracipennella*; Apple and Plum Case-bearer *Coleophora spinella*; *Coleophora ibipennella*; *Coleophora caespititiella*; *Epinotia abbreviana*; *Epiblema costipunctana*; *Dichrorampha petiverella*; Leopard Moth *Zeuzera pyrina*; *Matilella fusca*; Autumn Green Carpet *Chloroclysta miata*; Puss Moth *Cerura vinula*; Vine's Rustic *Hoplodrina ambigua*; Straw Underwing *Thalpophila matura*; Green Arches *Anaplectoides prasina*.

SJ77

Stigmella atricapitella; Azalea Leaf Miner *Caloptilia azaleella*; *Argyresthia trifasciata*; Cypress Tip Moth *Argyresthia cupressella*; *Metzneria lappella*; *Coleophora coracipennella*; Plum Tortrix *Hedya pruniana*.

SJ78

Tischeria dodonaea; *Argyresthia spinosella*; *Calamotropha paludella*; Beautiful Snout *Hypena crassalis*; Scarlet Tiger *Callimorpha dominula*; Orange Footman *Eilema sororcula*; Marbled White Spot *Deltote pygarga*.

SJ79

Roeslerstammia erxebella; *Bucculatrix nigricomella*; *Elachista maculicerusella*; *Lobesia littoralis*; *Epinotia immundana*; *Gypsonoma oppressana*; *Epiblema cirsiiana*; Box-tree Moth *Cydalima perspectalis*; Golden-rod Pug *Eupithecia virgaureata*; Small Yellow Underwing *Panemeria tenebrata*.

SJ85

Parornix finitimella; *Metzneria lappella*; *Acleris schalleriana*; *Agapeta zoegana*; *Epinotia sordidana*; Lunar Hornet Moth *Sesia bembeciformis*; Engrailed *Ectropis bistortata*.

SJ86

Incurvaria oehlmanniella; *Phyllonorycter hilarella*; Orchard Ermine *Yponomeuta padella*; *Batia lunaris*; Apple and Plum Case-bearer *Coleophora spinella*; Bramble Shoot Moth *Notocelia uddmanniana*; Black Rustic *Aporophyla nigra*; Beautiful Yellow Underwing *Anarta myrtilli*; Turnip Moth *Agrotis segetum*.

SJ87

Caloptilia alchimiella; *Phyllonorycter ulicicolella*; *Argyresthia glaucinella*; *Agonopterix propinquella*; *Coleophora siccifolia*; *Stathmopoda pedella*; *Schreckensteinia festaliella*; Apple Leaf Skeletonizer *Choreutis pariana*; *Endothenia marginana*; Box-tree Moth *Cydalima perspectalis*.

SJ88

Stigmella sakhalinella; *Ectoedemia louisella*; Sycamore *Acronicta aceris*.

SJ89

Prays ruficeps/fraxinella f. rustica; *Triaxomera parasitella*; *Phyllonorycter froelichiella*; *Argyresthia trifasciata*; *Argyresthia semifusca*; *Oxypteryx atrella*; *Carpatolechia alburnella*; *Coleophora discordella*; *Mompha ochraceella*; *Isotrias rectifasciana*; *Acleris hastiana*; *Hedya salicella*; *Lobesia abscisana*; *Endothenia nigricostana*; *Ancylis myrtiliana*; *Epiblema costipunctana*; Small Elephant Hawk-moth *Deilephila porcellus*; Blue-bordered Carpet *Plemyria rubiginata*; Phoenix *Eulithis prunata*; Chevron *Eulithis testata*; Sallow Kitten *Furcula furcula*; Lesser Swallow Prominent *Pheosia gnoma*; Red-necked Footman *Atolmis rubricollis*; Beautiful Golden Y *Autographa pulchrina*; Miller *Acronicta leporina*; Large Wainscot *Rhizedra lutosa*; Yellow-line Quaker *Agrochola macilenta*; Red Sword-grass *Xylena vetusta*; Suspected *Parastichtis suspecta*; Brindled Green *Dryobotodes eremita*; Obscure Wainscot *Leucania obsoleta*; Dark Sword-grass *Agrotis ipsilon*.

SJ96

Ectoedemia decentella; *Opostega salaciella*; Case-bearing Clothes Moth *Tinea pellionella*; *Psychoides verhuella*; *Aspilapteryx tringipennella*; *Phyllonorycter messaniella*; Bird-cherry Ermine *Yponomeuta evonymella*; *Cedestis gysselella*; *Cedestis trifasciella*; *Ocnerosoma friesei*; *Argyresthia laevigatella*; White-shouldered House-moth *Endrosia sarcitrella*; Brown House-moth *Hofmannophila pseudospretella*; *Carcina quercana*; *Bryotropha affinis*; *Bryotropha similis*; *Teleiodes vulgella*; *Coleophora lutipennella*; *Coleophora lusciniapennella*; Clover Case-bearer *Coleophora alcyonipennella*; *Coleophora tamesis*; *Elachista subalbidella*; *Elachista albidella*; *Ptycholomoides aeriferana*; *Pandemis cinnamomeana*; Barred Fruit-tree Tortrix *Pandemis cerasana*; *Acleris laterana*; *Acleris sparsana*; *Lobesia abscisana*; *Spilonota loricana*; *Epinotia rubiginosana*; Spruce Bud Moth

Zeiraphera ratzeburgiana; *Eucosma hohenwartiana*; Spotted Shoot Moth *Rhyacionia pinivorana*; *Cydia fagiglandana*; *Dioryctria abietella*; *Euzophera pinguis*; Rusty-dot Pearl *Udea ferrugalis*; *Eudonia truncicolella*; *Eudonia mercurella*; Water Veneer *Acentria ephemerella*; Pine Carpet *Pennithera firmata*; Dark Marbled Carpet *Dysstroma citrata*; Rivulet *Perizoma affinitata*; Brindled Pug *Eupithecia abbreviata*; Juniper Pug *Eupithecia pusillata*; Larch Pug *Eupithecia lariciata*; Currant Pug *Eupithecia assimilata*; Yellow-barred Brindle *Acasis viretata*; Tawny-barred Angle *Macaria liturata*; Satin Beauty *Deileptenia ribeata*; Muslin Footman *Nudaria mundana*; Scarce Footman *Eilema complana*; Pinion-streaked Snout *Schrankia costastrigalis*; Mother Shipton *Euclidia mi*; Lempke's Gold Spot *Plusia putnami*; Copper Underwing *Amphipyra pyramidea*; Svensson's Copper Underwing *Amphipyra berbera*; Early Grey *Xylocampa areola*; Frosted Orange *Gortyna flavago*; Large Ear *Amphipoea lucens*; Small Dotted Buff *Photodes minima*; Common Rustic *Mesapamea secalis*; Lesser Common Rustic *Mesapamea didyma*; Cloaked Minor *Mesoligia furuncula*; Marbled Minor *Oligia strigilis*; Tawny Marbled Minor *Oligia latruncula*; Orange Sallow *Tiliacea citrigo*; Flounced Chestnut *Agrochola helvola*; Glaucous Shears *Papestra biren*; Light Feathered Rustic *Agrotis cinerea*; Dark Sword-grass *Agrotis ipsilon*; Purple Clay *Diarsia brunnea*; Small Square-spot *Diarsia rubi*; Fen Square-spot *Diarsia florida*.

SJ97

Stigmella continuella; *Phyllonorycter dubitella*; *Ypsolopha alpella*; *Ochsenheimeria taurella*; *Plutella porrectella*; *Argyresthia trifasciata*; *Scrobipalpa acuminatella*; *Carpatolechia notatella*; *Coleophora trifolii*; *Elachista bisulcella*; *Celypha striana*; Pea Moth *Cydia nigricana*; *Duponchelia fovealis*; *Palpita vitrealis*; Barred Hook-tip *Watsonalla cultraria*; Pine Hawk-moth *Sphinx pinastri*; Devon Carpet *Lampropteryx oregiata*; Angle-striped Sallow *Enargia paleacea*.

SJ98

Phyllonorycter ulicicolella; Cypress Tip Moth *Argyresthia cupressella*; Pear Leaf Blister Moth *Leucoptera malifoliella*; *Dichrorampha acuminatana*; *Schoenobius gigantella*; Grey Scalloped Bar *Dyscia fagaria*.

SJ99

Bryotropha senectella; *Carpatolechia fugitivella*; Spruce Seed Moth *Cydia strobilella*; *Cydia fagiglandana*; *Grapholita lunulana*; Yellow-legged Clearwing *Synanthedon vespiformis*; Chocolate-tip *Clostera curtula*; Beautiful Hook-tip *Laspeyria flexula*.

SK06

Adela reaumurilla; Case-bearing Clothes Moth *Tinea pellionella*; Cocksfoot Moth *Glyphipterix simpliciella*; *Anarsia spartiella*; *Elachista albidella*; *Blastodacna hellerella*; Saxifrage Plume *Stenoptilia millieridactyla*; *Acleris forsskaleana*; *Hysterothra maculosana*; *Aethes smeathmanniana*; *Apotomis turbidana*; *Endothenia quadrimaculana*; *Epinotia immundana*; *Gypsonoma dealbana*; *Notocelia trimaculana*; *Grapholita internana*; *Euzophera pinguis*; *Catoptria falsella*; Barred Hook-tip *Watsonalla cultraria*; Humming-bird Hawk-moth *Macroglossum stellatarum*; Maiden's Blush *Cyclophora punctaria*; Double-striped Pug *Gymnoscelis rufifasciata*; Lilac Beauty *Apeira syringaria*; Blackneck *Lygephila pastinum*; Marbled Beauty *Bryophila domestica*; Grey Shoulder-knot *Lithophane ornitopus*; Brown-line Bright-eye *Mythimna conigera*; Neglected Rustic *Xestia castanea*.

SK08

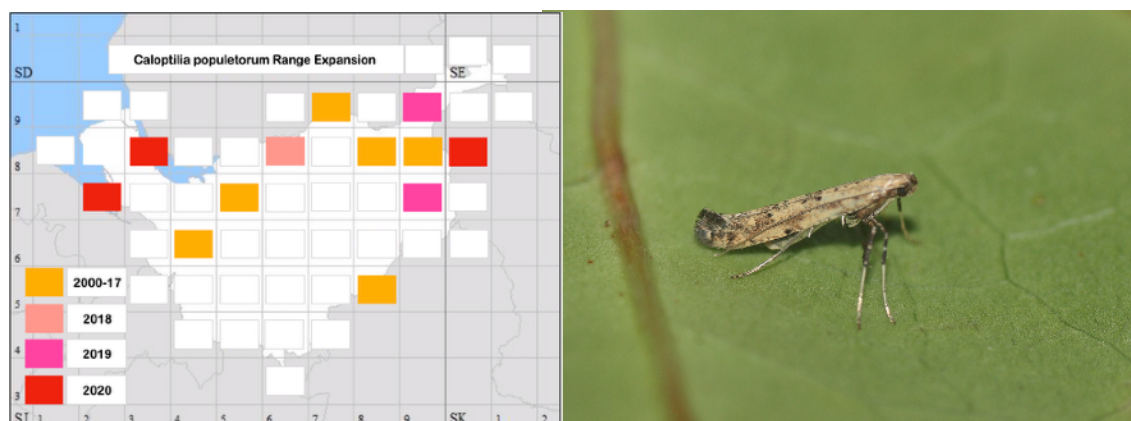
Stigmella crataegella; *Opostega salaciella*; *Tischeria ekebladella*; *Coptotriche marginea*; *Roeslerstammia erxebella*; *Caloptilia populetorum*; *Phyllonorycter harrisella*; *Paraswammerdamia nebulella*; *Ypsolopha ustella*; *Argyresthia goedartella*; *Argyresthia bonnetella*; *Agonopterix nervosa*; *Bryotropha affinis*; *Mirificarma mulinella*; *Coleophora mayrella*; *Coleophora paripennella*; *Elachista alpinella*; *Blastodacna hellerella*; *Epermenia chaerophyllella*; Variegated Golden Tortrix *Archips xylosteana*; *Aethes cnicana*; *Epinotia immundana*; *Epinotia nisella*; *Eucosma hohenwartiana*; *Notocelia trimaculana*; Leopard Moth *Zeuzera pyrina*; *Matilella fusca*; *Acrobasis repandana*; *Euzophera pinguis*; *Pyrausta despicata*; *Catoptria margaritella*; Slender Pug *Eupithecia tenuiata*; Waved Umber *Menophra abruptaria*; Chocolate-tip *Clostera curtula*; Mother Shipton *Euclidia mi*; Shoulder-striped Wainscot *Leucania comma*.

More than thirty species were new to three or more hectads in 2020.

The apparent spread of seven of these species across the county is illustrated in this set of maps. It is not easy to state whether it is indicative of a trend to wider geographical distribution or simply a consequence of increased recording.

15.003 *Caloptilia populetorum* (Zeller, 1839)

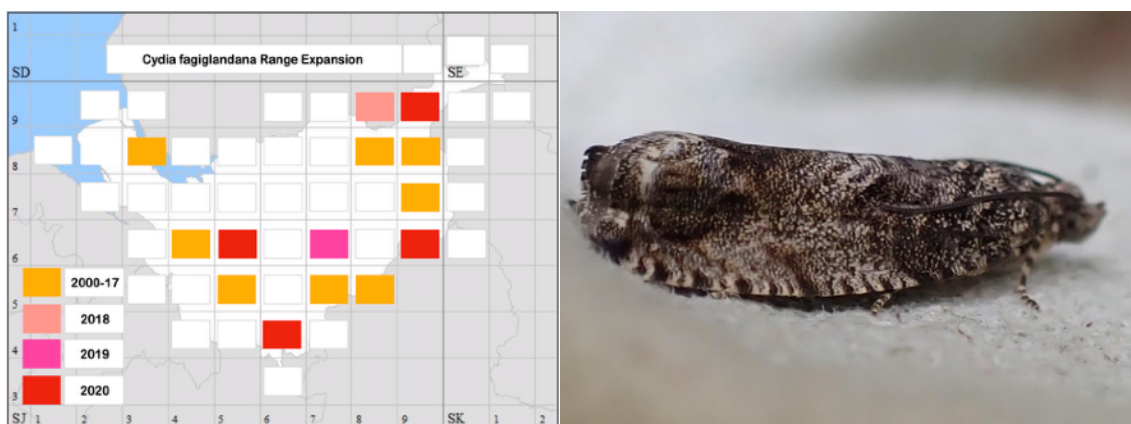
First recorded in Cheshire in 2013, the species has continued to be seen in 2020 at Stockport, Alsager and Sale, but was recorded for the first time at Little Neston, Bromborough and near Whaley Bridge.



Dave Higginson-Tranter

49.342 *Cydia fagiglandana* (Zeller, 1841)

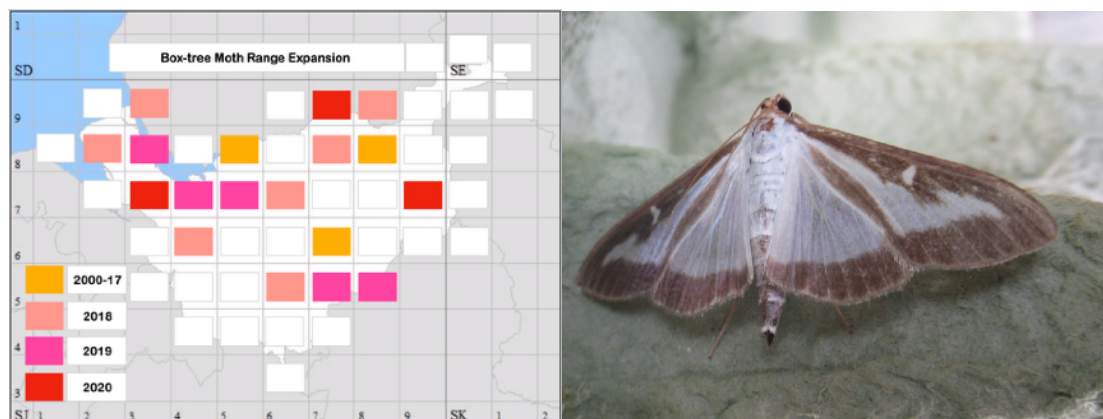
New squares could be added following sightings at Gee Cross (Hyde) and Wildboarclough in the east and Wybunbury and Tiverton in the south-west of the county.



Alison & Julian Borrow

63.054 Box-tree Moth *Cydalima perspectalis* (Walker, 1859)

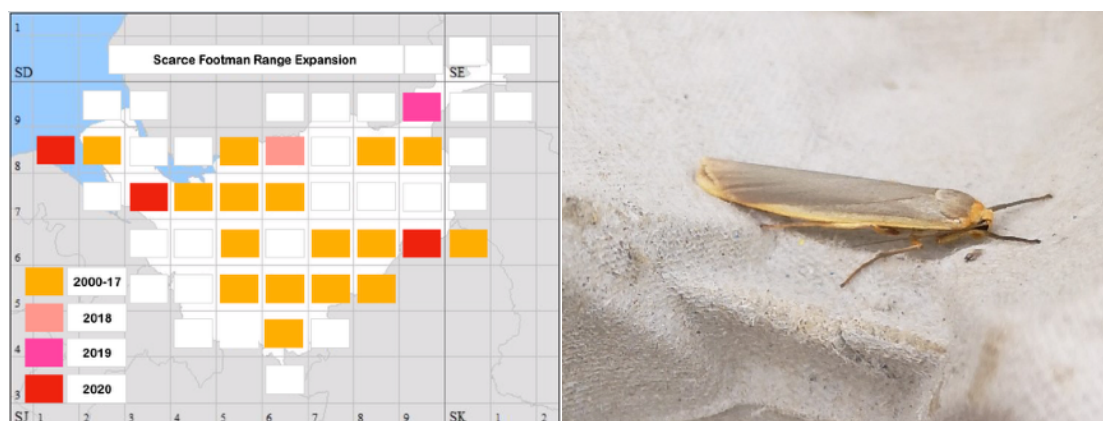
The spread of this species appears not yet to have touched the south-west or north-east of the county. It was recorded for the first time, however, at Little Neston, Sale and Wilmslow.



Dave Shaw

72.046 Scarce Footman *Eilema complana* (Linnaeus, 1758)

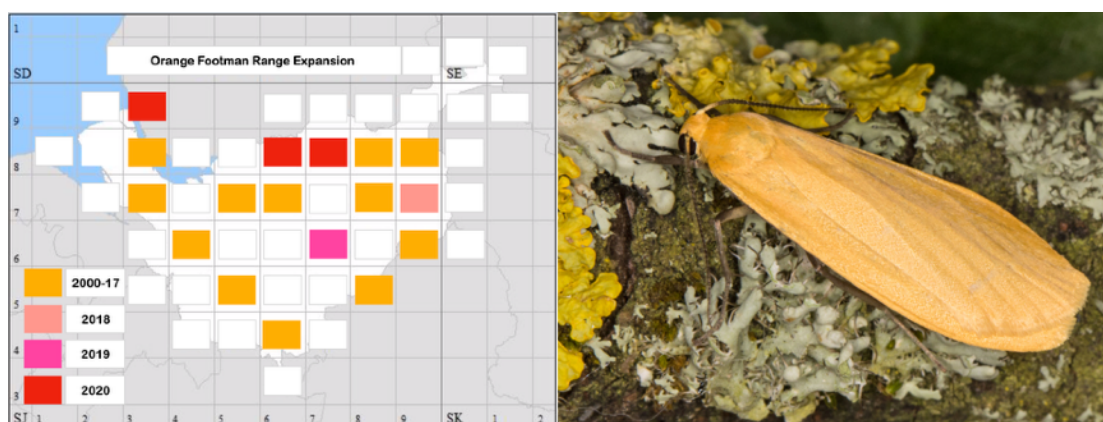
Was newly recorded in 2020 at Hilbre Island, Little Neston and Wildboardclough.



Gavin Broad

72.049 Orange Footman *Eilema sororcula* (Hufnagel, 1766)

Was newly recorded in 2020 at Wallasey, Warrington and Bowdon, Altrincham.



Roy Hilton

73.039 Sycamore *Acronicta aceris* (Linnaeus, 1758)

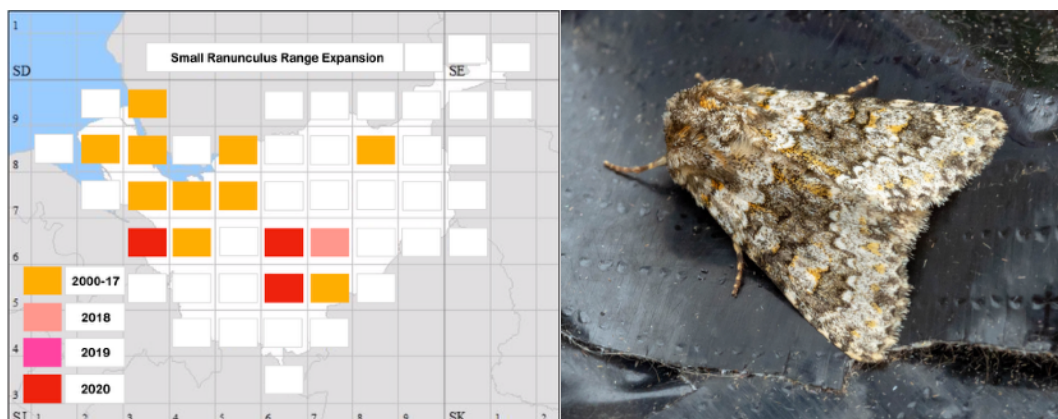
The first appearances this century were in 2009, at Birkenhead and at Mobberley. The species was recorded in 2020 at Wallasey, Blacon (Chester), Winsford and Gatley.



Colin Schofield

73.280 Small *Ranunculus Hecatera dysodea* ([Denis & Schiffermüller], 1775)

Was recorded at Blacon (Chester), Wistaston (Crewe) and Moulton.



Dean Davies

Cheshire Moth Recorders for 2020

C Rupert Adams, Chloe Aldridge, Marie Amos, Luke Anderson, Tom Aspinall, Peter F Atherton **PFA**, Ralph Atherton, Stephen Atkins, Nigel Ball, Thomas Banks, Marion Barlow **MB**, Barry S Barnacal **BSB**, Dave Bedford, Steven Bell, Bill Bellamy, Mel Bellingham **MBe**, Roger Benson **RB**, Liz Bentham **LB**, Ray G Bertera **RGB**, Andy Bissitt **AB**, Paul Bissitt, Fiona Bithell, Robert Bithell **RBi**, Peter Boardman, Helen & Bob Coan **H&BC**, Dave Booth, Mike Boothman, Thomas Booton, Alison & Julian Borrow **A&JB**, Lesley Brereton, Paul Brewster **PB**, Sarah Bridson, Philip Brighton, Gavin Broad **GB**, John P Bryan, Sue D Budd, Paul Alexander Burt, Sue Byron, David Callender, Andrew Charlton, Joe Chester, Stephen P Collins **SPC**, Graham Connolly **GC**, David A Cookson, Roger Cope, Shannon Cornish, David Costello, Sheila Coverdale, L Coward, Alex Crawford, Tim Crawford, Alan Creaser **AC**, Alex Cropper, John d'Aubray-Butler, Mike Dale **MD**, Dean Davies, Harry Davies, Erin Dawber, Jennifer Dayananda, Roger L H Dennis, Jennifer Dickinson, Tony Dickinson, Leanna Dixon, Mike Dockery & Kevin McCabe, Clive Donaldson **CD**, Elina-Marielle Doss, C J Dover, John W Dover, Chris Driver, Philip Duckers, Mark Dugmore, Nigel Earp **NE**, David W Edwards **DWE**, Steve and Janine Edwards, Irene Ellis, Andrew Emmerson **AE**, Amy Evans, Gareth Evans, Pam Evans, Vicky Fairhurst, Shane P Farrell, Kathryn Fegan, Andrew Firth, Eric Fletcher, Keith Fowler, Neil Friswell, David George, Esther Gibson, Paula Gilsenan, Nicola Ginn, Jackie Goodwin, Alan P Graham **APG**, Heather & Les Green **H&LG**, Paul Griffiths **PG**, Martin Grimes, Les and Marian Hall, Tim & Elma Halliday, Julia Harding, Loren Hardy, Peter B Hardy, Andy Harmer, Gary Hedges, Alida Heston, Jane E Hewitt **JEH**, Dave Higginson-Tranter **DH-T**, Paul Martin Hill, P F Hillyer **PFH**, Roy Hilton **RH**, Zac Hinchcliffe, Steve H Hind **SHH**, Fiona Hirst, Heather Hockaday, Elizabeth Hollinshead **EH**, Mike Holmes, Steve W Holmes **SWH**, Peter Hooper **PH**, Paul Hopkins **PHo**, Mary Houseman, Kate Hughes **KH**, Heather Hulse, Virginia Hunt, Anthony Hunter, Elly Hutton, Andy Ingham, Philip Ish & Patricia Wain **PI&PW**, John Jakeman **JJ**, Dave James, Emma Javid, Huw John **HJ**, Clive Jones **CJ**, Graham Jones **GJ**, Helen Jones, Jon M Kelly, Hannah Khwaja, Dave King **DK**, Simon Knight **SK**, Rosie Lacey, Peter S Lennon, Angela M Lidgett **AML**, Julie Lightfoot **JL**, Ted Lock **TL**, Helen Longmore, Roy Lowry, Jeanette & Dave Maddy, Vallia Mallace, Antony Marriott **AM**, Francis Marshall, Richard May **RM**, K McCabe **KM**, Fraser McConnell **FMcC**, Steve J McWilliam, Norma Miles, Paul Miller, Shirley Miller, Gail Morgan, Natasha Murwill, Tom Muxlow, Alex Neal **AN**, Keith Neal, Cliff Nixey, Paul Oldfield, Jean Oliver, Steve A Orridge **SAO**, Greg Osborn **GO**, Suzanne Parrott, Kevin Peace **KP**, Mike Perchard, Katie Piercy, Connah Platt, Toby Pritchard, John W Rayner **JWR**, Andrew Reed, Celia Reed, Stephen Richardson **SR**, John K Roberts, Gemma Roome, Julie Rose, Glenn Rostron, Paul Round, Richard A Rowlandson, David P Rumley, Edwin Samuels **ES**, Colin Schofield **CS**, Vicki Senior, Angie Seymour **AS**, John P Shaughnessy **JPS**, Barry T Shaw, Chris Shaw, David J Shaw, Margaret Sixsmith, Ali Skingsley, Dave R Skingsley **DRS**, Ben Smart **BS**, Hayley Smith, Heather Smith, Ian Smith, Peter Smith, Mr & Mrs Spicer, Sue Spiller, Martyn Stanyer **MPS**, Eric Stead, Phil Stockton, Jack H Swan **JHS**, Gail Taplin, Celise Taylor, Dave Taylor **DT**, Rachel Thackray, Sam Thomas, Charles Thompson, David Tomlinson, Bill Underwood, Anne Wallace, Diana Wanless, Tim Ward **TW**, Clive Washington **CW**, Naomi Watson, N Webb, Colin Wells **CWe**, Charles Whitaker, Derek Whiteley, Michael R Whiteside **MRW**, Roger Wilkinson **RW**, Emily Williamson, Mike Williamson, Neville Wright.

Acknowledgements

The author would like to thank everyone who submitted records and photographs to be included into this report.

Thanks also to all those who have helped with species identification through the year.