

## CHESHIRE (VICE COUNTY 58)

---



## MOTH REPORT FOR 2021



*Coronet : Greg Osborn*

**Author: David Maddy**

**Date: April 2022**

## Introduction

“Where have all the moths gone?” was the cry around the county in April and May as people uncovered disappointing and near-empty traps at that time. Then, from mid-July, just as many admitted to being overwhelmed with high numbers of different species.

Judging from posts on the Cheshire Moth Group on Facebook or on the rECOrd Moth Group forum, we sensed that we were seeing more Beautiful Hook-tips or Buff-tips than normal - but where were the Dun-bars or the Burnished Brasses?

Social media - great for sharing news quickly - can result in views being quickly accepted as facts. But does the Annual Moth Report bear out the anecdotal evidence, once all the numbers have been crunched?

In 2021, nearly one thousand different species were recorded in the county; the total number of moth records continued to rise, exceeding one hundred thousand for the first time; the number of recorders in the county reached 268 (up by 46), including ninety who submitted a batch of records for the year. This Annual Report contains a summary and analysis of that moth recording in 2021.

However, there must be room for both anecdotes and comprehensive statistically-based reporting. Readers can judge to what extent their own experience tallies with the results presented in this report!

- A list is provided, itemising all micro-moth species that were recorded three or fewer times during the year as well as all macro-moth species that were recorded five or fewer times.
- The area of VC58 covers at least a part of 49 “hectads” - grid-reference squares of 10km by 10km. A total of 460 species were recorded for the first time in their respective hectads in 2021. These are listed for each hectad, in turn.
- The increased range of eight species across the county is illustrated in a set of maps.
- Thirteen migrant species - those species that have flown or been transported by air-streams from origins outside of the British Isles - were recorded in 2021 in Cheshire and are tabulated.

The table below shows the number of species and records in Cheshire over the decade from 2012 to 2021. The total number of records submitted in 2021 topped one hundred thousand for the first time. The number of different species of micro-moths recorded in the county was down from 561 to 530, while the number of macro-moths (435) was almost unchanged.

Year	Species			Records		
	Micro's	Macro's	Total	Micro's	Macro's	Total
2012	449	381	830	12,613	32,556	45,169
2013	505	406	911	17,937	44,940	62,877
2014	515	409	924	23,508	53,853	77,361
2015	490	420	910	17,091	47,901	64,992
2016	519	411	930	21,411	44,543	65,954
2017	526	422	948	21,340	51,567	72,907
2018	543	427	970	24,623	54,755	79,378
2019	546	416	962	23,359	48,971	72,330
2020	561	434	995	26,817	64,682	91,499
2021	527	435	962	26,228	75,449	101,677

\* The number of macro-moths reported in 2020 was 435 but included one species that was later re-determined.

The table, below, shows the “turnover” of macro-moth species, from last year.

Macros in 2020, but not 2021	Macros in 2021, but not 2020
Gold Swift; Convolvulus Hawk-moth; Death's-head Hawk-moth; Least Carpet; Smoky Wave; Barred Rivulet; Angle-barred Pug; Clouded Magpie; V-Moth; Grey Scalloped Bar; Clouded Buff; Red-necked Footman; Marsh Oblique-barred; Beautiful Marbled; Bordered Sallow; Scarce Bordered Straw; Dusky Sallow; Fen Wainscot; Twin-spotted Wainscot; Tawny Pinion; Northern Deep-brown Dart; Blossom Underwing; Shore Wainscot; Portland Moth; Light Feathered Rustic; Heart and Club.	Red-tipped Clearwing; Mullein Wave; July Belle; Gem; Red Carpet; Dark Spinach; Mallow; Pale November Moth; Small Autumnal Moth; Dark Umber; Satyr Pug; Barred Umber; Brussels Lace; Grass Emerald; Clifden Nonpareil; Coronet; Marbled Green; Haworth's Minor; Brown-veined Wainscot; Webb's Wainscot; Dusky-lemon Sallow; Golden-rod Brindle; Lead-coloured Drab; Northern Drab; Barred Chestnut; White-marked; Heath Rustic.

A cold January and early February gave way to a milder early Spring, which turned into a season of contrasts. Overall it was colder than average, with notable warm spells only at the end of March and the end of May. April turned very cold, with a number of frosts, but was otherwise dry and sunny. May was very unsettled and cold except for the final few days.

The cold temperatures overnight in April resulted in distinctly poor numbers of different species being trapped, as illustrated in the graph below.

June began warm and continued unexceptionally into early July, until a hot spell during the second half of the month. Early August was unsettled, but mostly dry until the end of the month.

Again, the graph below shows that the high temperatures from mid-July brought about a peak for the year in the number of recorded species.

September was mostly settled, albeit with some outbreaks of rain. Cooler conditions kicked in for the last few days.

The year ended with mild temperatures and occasional heavy rain.

Source: <https://www.metoffice.gov.uk/research/climate/maps-and-data/summaries/index>

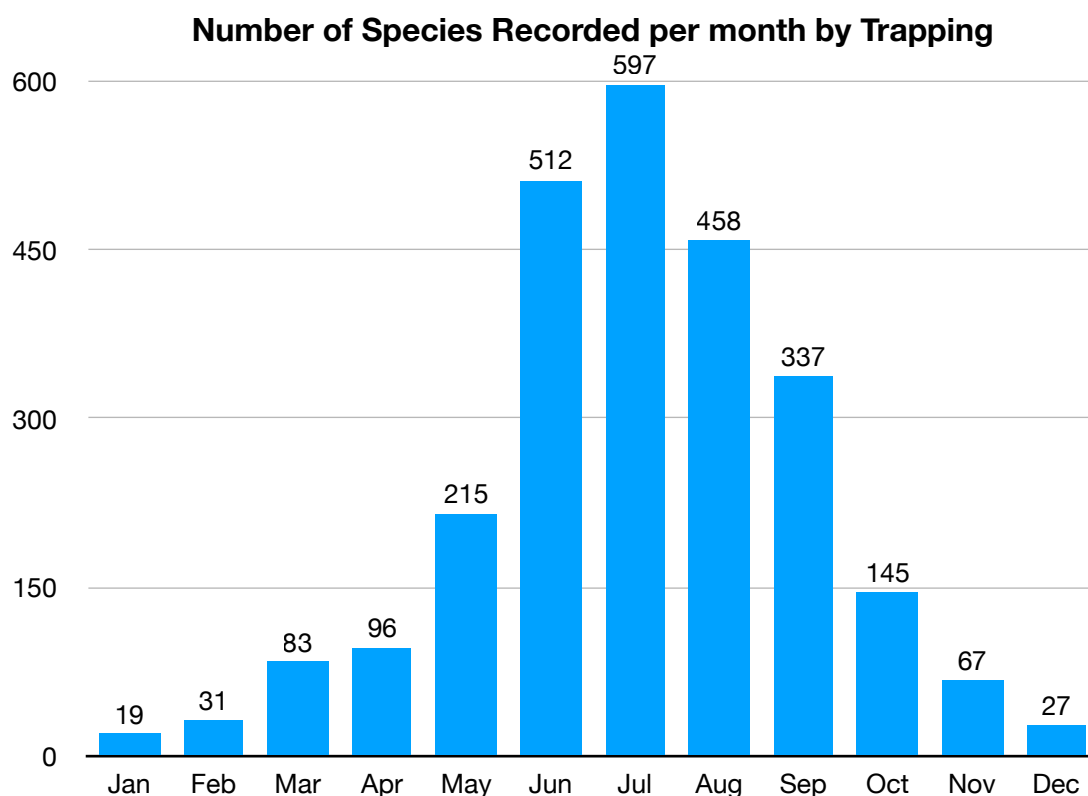


Figure 1: Graph, showing the number of species trapped per month in 2021.



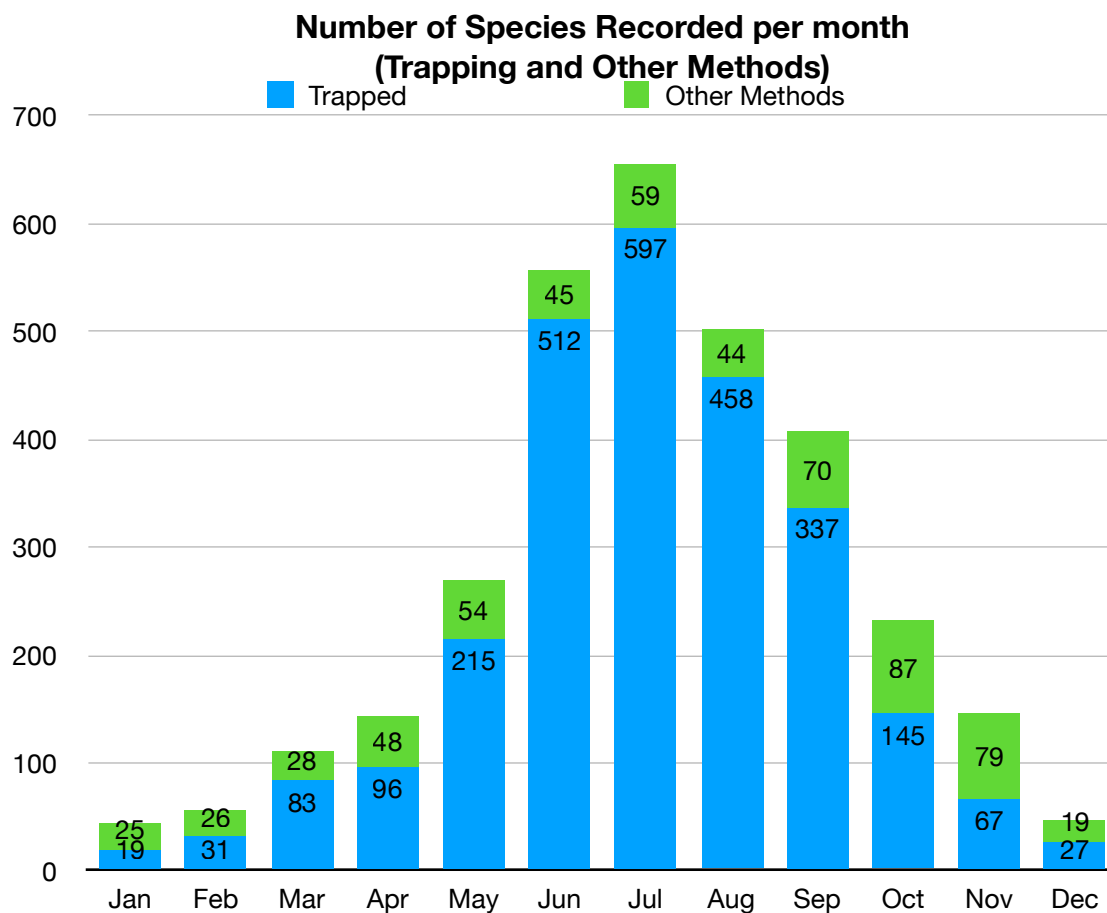


Figure 2: Graph, showing the number of species per month in 2021 (all methods).

The extent to which other methods of observing moths (daytime observations, beating, leaf mines, etc) contribute to the total counts of species can be seen from the graph, above.

(In the analysis above, trapping includes light trapping and pheromone trapping).

### Least-recorded Species in 2021

As always, time and effort dictate that this report cannot be a complete analysis of the year's records; it does however itemise all micro-moth species that were recorded three or fewer times during the year as well as all macro-moth species that were recorded five or fewer times.

Throughout what follows, header information relating to each species appears thus:

3.004 **Gold Swift** *Hepialus hecta* (Linnaeus, 1758)

Which, reading left to right detail:

- Agassiz, Beavan & Heckford species number
- Species' vernacular name
- Species' taxonomic name
- Species' Author(s)

1.004 *Micropterix aruncella* (Scopoli, 1763)

One at Carleton Road, Higher Poynton on 3<sup>rd</sup> June and two (male and female) at the same site six days later (SHH). Another at Cheadle Hulme on 6<sup>th</sup> June (DH-T).

2.003 *Eriocrania unimaculella* (Zetterstedt, 1839)

A blotch leaf mine on birch sapling (from the leaf edge) at Midgley Lane, Wildboardclough on 16<sup>th</sup> May (A&JB). The larva had vacated the leaf ten days later.

2.004 *Eriocrania sparrmannella* (Bosc, 1791)

A mine, on birch, at Stockport on 22<sup>nd</sup> June (SHH) and six mines at Thornton-le-Moors on 17<sup>th</sup> July (SWH).

2.006 *Eriocrania cicatricella* (Zetterstedt, 1839)

Two blotch leaf mines on birch sapling (from the leaf edge) at Midgley Lane, Wildboardclough on 23<sup>rd</sup> May (A&JB). The mines were vacated by 26<sup>th</sup> May. Adult emerged on 30<sup>th</sup> March 2022.

2.007 *Eriocrania semipurpurella* (Stephens, 1835)

One at Linley Lane, Alsager on 30<sup>th</sup> March (MD) and another the next day at the same site. One at Carleton Road, Higher Poynton on 2<sup>nd</sup> April (SHH). All were determined by examination of the genitalia.

4.002 *Stigmella lapponica* (Wocke, 1862)

Mines on birch at Long Highlees Wood, Over Alderley on 16<sup>th</sup> September (SHH).

4.005 *Stigmella betulicola* (Stainton, 1856)

A leaf mine at Ince Park on 28<sup>th</sup> July (SWH) and three, on a single leaf of birch, at Lindow Common on 9<sup>th</sup> November (TW).

4.006 *Stigmella sakhalinella* (Puplesis, 1984)

A leaf mine on birch at Tytherington on 5<sup>th</sup> September (TW) and numerous mines, also on birch, at Ellesmere Port on 3<sup>rd</sup> November (HJ).

4.008 *Stigmella glutinosae* (Stainton, 1858)

A larva, showing a brown ventral prothoracic plate, on alder, at Peover Superior on 25<sup>th</sup> October (TW).

4.023 *Stigmella crataegella* (Klimesch, 1936)

Two mines at Goway Meadows CWT on 24<sup>th</sup> July (SWH), one larva at Common Lane,

Waverton on 5<sup>th</sup> August (H&BC) and two more, on hawthorn, at the same site on 20<sup>th</sup> August.

4.061 *Stigmella atricapitella* (Haworth, 1828)

A mine on oak, with egg on the underside, at Sale on 22<sup>nd</sup> November (BS). The parasitised larva had black sclerites.

4.068 *Trifurcula immundella* (Zeller, 1839)

Four mines (one tenanted) on broom twigs at Thurstaston Country Park on 21<sup>st</sup> February (PH). Black egg visible.

4.071 *Bohemannia pulverosella* (Stainton, 1849)

One larva on apple at Common Lane, Waverton on 7<sup>th</sup> July (H&BC) and numerous mines, also on apple, at Willaston, Wirral on 02 November (HJ).

4.076 *Ectoedemia decentella* (Herrich-Schäffer, 1855)

One at Dane Road, Sale on 25<sup>th</sup> September (JPS).

4.077 *Ectoedemia weaveri* (Stainton, 1855)

Mines on cowberry at Brushes Valley on 28<sup>th</sup> February and on 30<sup>th</sup> March (BS).

4.085 *Ectoedemia argyropeza* (Zeller, 1839)

Twenty mines on fallen alder leaves at Burton Mere Wetlands RSPB (East) on 8<sup>th</sup> November (GJ) and a larva on an aspen leaf at Macclesfield Road allotments, Whaley Bridge on 17<sup>th</sup> November (AS).

4.088 *Ectoedemia heringella* (Mariani, 1939)

Over a hundred mines at Crewe on 5<sup>th</sup> January (BS), many tenanted mines on holm oak, at Ford Lane, Ness Gardens on 20<sup>th</sup> February (GJ) and another mine on holm oak at Eastham Country Park on 19<sup>th</sup> March (PH). The first ever Cheshire record was in 2019.

4.094 *Ectoedemia angulifasciella* (Stainton, 1849)

Ten mines at Gowy Meadows CWT on 9<sup>th</sup> October (ED, SWH), four at the same site on 16<sup>th</sup> October and six more there on 25<sup>th</sup> October (SWH).

4.100 *Ectoedemia minimella* (Zetterstedt, 1839)

A mine at Ince Park on 28<sup>th</sup> July (SWH) and more, on birch, at Long Highlees Wood, Over Alderley on 16<sup>th</sup> September (SHH).

6.004 *Heliozela resplendella* (Stainton, 1851)

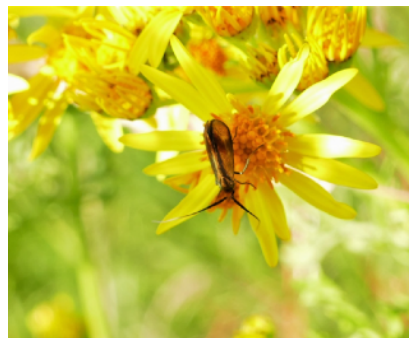
Mines on alder at Long Highlees Wood, Over Alderley on 16<sup>th</sup> September (SHH).

7.001 *Nemophora degeerella* (Linnaeus, 1758)

One at Broomhall, Nantwich on 30<sup>th</sup> May (PG) and one at Burton Mere Wetlands RSPB (East) on 20<sup>th</sup> June (RW).

7.003 *Nemophora cupriacella* (Hübner, [1819])

Two at Romiley Golf Course on 18<sup>th</sup> July (AB).



Andy Bissitt

8.003 *Incurvaria oehlmanniella* (Hübner, 1796)  
One at Peckforton Hill on 13<sup>th</sup> July (MRW).



Mike Whiteside

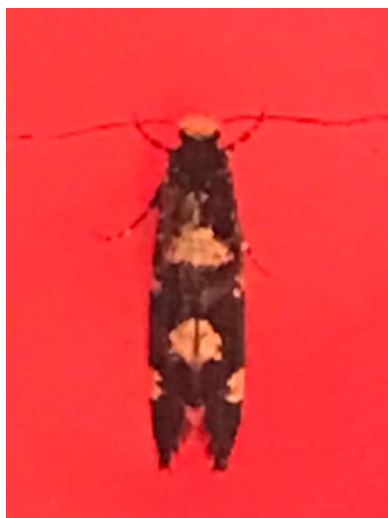
8.005 *Phylloporia bistrigella* (Haworth, 1828)  
One at Linley Lane, Alsager on 1<sup>st</sup> June and another at the same site the next day (MD).

11.002 *Narycia duplicella* (Goeze, 1783)  
One at Dane Road, Sale on 9<sup>th</sup> June (JPS).

12.010 *Morphaga choragella* ([Denis & Schiffermüller], 1775)  
One at Dane Road, Sale on 11<sup>th</sup> September (JPS).



John P Shaughnessy



12.011  
*Triaxomera fulvimitrella* (Sodoffsky, 1830)  
One at Bourne Street, Wilmslow on 17<sup>th</sup> June (TL).

Ted Lock

12.016 **Cork Moth** *Nemapogon cloacella* (Haworth, 1828)  
One at Meadowside, Burwardsley on 1<sup>st</sup> June (MRW) and one at Highfield Road, Hazel Grove on 7<sup>th</sup> September (JWR). Both determined by genitalia examination.

12.019 *Nemapogon ruricolella* (Stainton, 1849)  
One, attracted to VES pheromone lure, at Kent Close, Bromborough on 9<sup>th</sup> July (PH). Determined by genitalia examination. This was only the second record of this species in Cheshire, the first being at Disley in 1947.

12.023 *Triaxomasia caprimulgella* (Stainton, 1851)  
Two, to pheromone lure for Lunar Hornet, at Kent Close, Bromborough on 2<sup>nd</sup> July (PH) - the first time that this species has been recorded in Cheshire.



Paul Hopkins

12.027 *Tinea pellionella* (Linnaeus, 1758)  
One at Badger Bait, Little Neston on 26<sup>th</sup> August (GJ). Determined by genitalia examination.

12.035 *Niditinea striolella* (Matsumura, 1931)  
One at Kent Close, Bromborough on 2<sup>nd</sup> July (PH), determined by genitalia examination. This is only the second record of this species in Cheshire, the first being at Brereton Heath in 1986.

12.039 *Monopis crocicapitella* (Clemens, 1859)  
One at Shannon Close, Willaston, Nantwich on 24<sup>th</sup> October (DT), determined by genitalia examination. This is only the second record of this species in Cheshire, the first being at Hilbre Island in 2012.

12.047 *Psychoides verhuella* (Bruand, 1853)  
A larva at Common Lane, Waverton on 21<sup>st</sup> April (H&BC). The adult emerged on 28<sup>th</sup> April from collected fern fronds.

14.003 *Bucculatrix maritima* (Stainton, 1851)  
One at Kent Close, Bromborough on 3<sup>rd</sup> September (PH).



Paul Hopkins

14.008 *Bucculatrix cidarella* (Zeller, 1839)  
One at Carleton Road, Higher Poynton on 13<sup>th</sup> June and four mines on alder at Over Alderley on 16<sup>th</sup> September (SHH).

15.003 *Caloptilia populetorum* (Zeller, 1839)  
One at Hightree Drive, Henbury on 30<sup>th</sup> March (TW), another on the same day at Woodlands Drive, Chester (AN) and one at Linley Lane, Alsager on 21<sup>st</sup> July (MD).

15.011 *Caloptilia falconipennella* (Hübner, [1813])  
One at Kent Close, Bromborough on 30<sup>th</sup> March (PH) and another, one day later, at Linley Lane, Alsager (MD). Both were determined by genitalia examination. A new county record.

15.019 *Acrocercops brongniardella* (Fabricius, 1798)  
A vacated mine on holm oak at Eastham Country Park on 19<sup>th</sup> March (PH).



15.022 *Callisto denticulella* (Thunberg, 1794)

One adult was attracted to a lure for *Lampronia capitella* at Kent Close, Bromborough overnight on 4<sup>th</sup> June. A mine, on apple, at Carleton Road, Higher Poynton on 1<sup>st</sup> September (SHH) and another, also on apple, at Hightree Drive, Henbury on 3<sup>rd</sup> September (TW).

15.025 *Parornix betulae* (Stainton, 1854)

One male at Linley Lane, Alsager on 31<sup>st</sup> May (MD). Determined by genitalia examination.

15.030 *Parornix scoticella* (Stainton, 1850)

Numerous mines on rowan in Long Highlees Wood, Over Alderley on 16<sup>th</sup> September (SHH).

15.046 *Phyllonorycter blancardella* (Fabricius, 1781)

Fifty mines on crab apple at Common Lane, Waverton on 19<sup>th</sup> October (H&BC). Adult determined by examination of genitalia.

15.050 *Phyllonorycter cerasicolella* (Herrich-Schäffer, 1855)

Mines on cherry at Dukinfield on 8<sup>th</sup> November (SHH) and also on cherry at Kenworthy, near the Fairy Lane sub-station, on 22<sup>nd</sup> November (BS).

15.054 *Phyllonorycter viminiella* (Sircom, 1848)

One at Midgley Lane, Wildboarclough on 8<sup>th</sup> September (A&JB). Determined by examination of genitalia.

15.060 *Phyllonorycter ulicicolella* (Stainton, 1851)

A mine on gorse at Prince's Wood, Poynton on 13<sup>th</sup> January (SHH). Another mine, also on gorse, at Eastham Country Park on 19<sup>th</sup> March 2021 (PH).

15.065 *Phyllonorycter esperella* (Goeze, 1783)

One tapped from hornbeam at Whaley Bridge on 25<sup>th</sup> April (AS) and mines, also on hornbeam, at Dukinfield on 8<sup>th</sup> November (SHH).

15.067 *Phyllonorycter rajella* (Linnaeus, 1758)

Mines on alder in Long Highlees Wood, Over Alderley on 16<sup>th</sup> September (SHH) and, also on alder, at Hooton on 27<sup>th</sup> October (HJ)

15.073 *Phyllonorycter lautella* (Zeller, 1846)

A mine on oak sapling at Carleton Road, Higher Poynton on 4<sup>th</sup> August (SHH).

15.076 *Phyllonorycter emberizaepenella* (Bouché, 1834)

A mine at Deansfield Way, Elton on 5<sup>th</sup> October (MB, SWH), several more on snowberry at Willaston, Wirral on 23<sup>rd</sup> October and at Ellesmere Port on 3<sup>rd</sup> November (HJ).

15.080 *Phyllonorycter froelichiella* (Zeller, 1839)

Mines on alder at Long Highlees Wood, Over Alderley on 16<sup>th</sup> September (SHH).

15.082 *Phyllonorycter klemannella* (Fabricius, 1781)

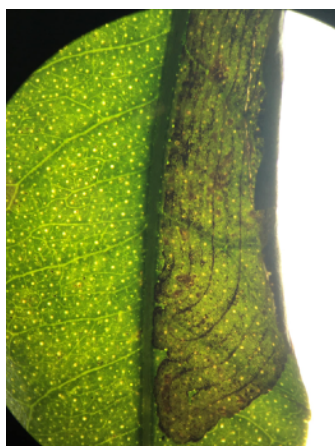
Mines on alder in Long Highlees Wood, Over Alderley on 16<sup>th</sup> September (SHH).

15.083 *Phyllonorycter trifasciella* (Haworth, 1828)

One at Carleton Road, Higher Poynton on 9<sup>th</sup> June and another at the same site on 18<sup>th</sup> September (SHH).

15.084 *Phyllonorycter acerifoliella* (Zeller, 1839)

Mines, on field maple, at Willaston, Wirral on 23<sup>rd</sup> October and at Hooton on 27<sup>th</sup> October (HJ).



15.0931 *Phyllocnistis citrella* Stainton, 1856  
Mine (vacated) on leaf of clementine bought in supermarket at Birkenhead on 28<sup>th</sup> February (PH). A new species for Cheshire.

Paul Hopkins

16.002 *Yponomeuta padella* (Linnaeus, 1758)  
Twenty-five larvae in a web on hawthorn at Burton Mere Wetlands RSPB (East) on 25<sup>th</sup> August (GJ).

16.003 *Yponomeuta malinellus* (Zeller, 1838)  
Nine larvae in a web on apple at Badger Bait, Little Neston on 15<sup>th</sup> August (GJ).

16.004 *Yponomeuta cagnagella* (Hübner, [1813])  
Two hundred at Frodsham Marsh on 16<sup>th</sup> May (RW).



16.024 *Ocnerostoma friesei* (Svensson, 1966)  
One (male) at Carleton Road, Higher Poynton on 30<sup>th</sup> March (SHH) and another (male) at Linley Lane, Alsager on 26<sup>th</sup> July (MD). Both were determined by examination of the genitalia.

Steve Hind

17.002 *Ypsolopha nemorella* (Linnaeus, 1758)  
One at Carleton Road, Higher Poynton on 25<sup>th</sup> July and another at the same site on 14<sup>th</sup> August (SHH).

19.001 *Orthotelia sparganella* (Thunberg, 1788)  
One at Carleton Road, Higher Poynton on 23<sup>rd</sup> July (SHH) and one at Verdin Close, Moulton on 7<sup>th</sup> August (PB).

19.003 *Glyphipterix fuscoviridella* (Haworth, 1828)  
One at Weston on 3<sup>rd</sup> June (DGG).

19.005 *Glyphipterix haworthana* (Stephens, 1834)  
One at Wybunbury Moss on 22<sup>nd</sup> April (AML).

20.006 *Argyresthia dilectella* Zeller, 1847  
One at Hightree Drive, Henbury on 13<sup>th</sup> July (TW), determined by examination of the genitalia.

20.014 *Argyresthia sorbiella* (Treitschke, 1833)  
One at Linley Lane, Alsager on 21<sup>st</sup> June (MD).

20.015 *Argyresthia curvella* (Linnaeus, 1761)  
One at Dane Road, Sale on 13<sup>th</sup> June (JPS).

20.024 *Argyresthia semitestacella* (Curtis, 1833)  
One at Linley Lane, Alsager on 1<sup>st</sup> September and another at the same site on 18<sup>th</sup> September (MD).

27.001 *Oegoconia quadripuncta* (Haworth, 1828)  
One (male) at Linley Lane, Alsager on 27<sup>th</sup> June (MD) and one at Kent Close, Bromborough on 21<sup>st</sup> July (PH). Both were determined by examination of the genitalia.



28.008 *Metalampra italica* (Baldizzone, 1977)  
One at Marbury Country Park on 17<sup>th</sup> July (DB), one at Haslington on 9<sup>th</sup> August (JPB), and one at Kingsley on 8<sup>th</sup> September (PM).

*Paul Miller*

29.002 *Diurnea lipsiella* ([Denis & Schiffermüller], 1775)  
One at Midgley Lane, Wildboarclough on 13<sup>th</sup> October (A&JB).



*Alison & Julian Borrow*



32.029 *Agonopterix umbellana* (Fabricius, 1794)  
One at Midgley Lane, Wildboarclough on 26<sup>th</sup> October  
(A&JB).

*Alison & Julian Borrow*

32.035 *Agonopterix yeatiana* (Fabricius, 1781)  
One at Pembroke Close, Handbridge on 1<sup>st</sup> August (KP) and another, confirmed by examination of the genitalia, at Burton Mere Wetlands RSPB (East) on 11<sup>th</sup> September (GJ).

32.040 *Depressaria ultimella* (Stainton, 1849)  
One at Kent Close, Bromborough on 23<sup>rd</sup> April (PH), confirmed by examination of the genitalia.

32.043 *Depressaria sordidatella* (Tengström, 1848)  
One at Highfield Road, Hazel Grove on 30<sup>th</sup> August (JWR), confirmed by examination of the genitalia. Only the second record of this species for Cheshire.



35.0191 *Anarsia innoxia* (Gregersen & Karsholt, 2017)  
One at Badger Bait, Little Neston on 4<sup>th</sup> August (GJ). A new species for Cheshire, it was only recognised as a separate species from *Anarsia lineatella* in 2017.

*Graham Jones*

35.020 *Anarsia spartiella* (Schrank, 1802)  
One at Meadowside, Burwardsley on 22<sup>nd</sup> July (MRW), confirmed by examination of the genitalia.

35.056 *Metzneria lappella* (Linnaeus, 1758)  
One at Deansfield Way, Elton on 4<sup>th</sup> July (MB, SWH).



35.065 *Monochroa cytisella* (Curtis, 1837)  
One at Midgley Lane, Wildboarclough on 21<sup>st</sup> July and another at the same site two days later (A&JB).



*Alison & Julian Borrow*

35.093 *Mirificarma mulinella* (Zeller, 1839)  
Two at Meadowside, Burwardsley on 27<sup>th</sup> July (MRW), confirmed by examination of genitalia, as was one at Heath Lane Allotment, Little Sutton on 13<sup>th</sup> August and another there again on 2<sup>nd</sup> September (HJ).

35.107 *Psoricoptera gibbosella* (Zeller, 1839)  
One at Carleton Road, Higher Poynton on 4<sup>th</sup> August (SHH) and one (male, determined by examination of the genitalia) at Linley Lane, Alsager on 20<sup>th</sup> August (MD).

35.109 *Scrobipalpa acuminatella* (Sircom, 1850)  
A mine On thistle at Willaston, Wirral on 5<sup>th</sup> November (HJ).

35.147 *Carpatolechia decorella* (Haworth, 1812)  
One at Kent Close, Bromborough on 30<sup>th</sup> March, determined by examination of the genitalia, and another at the same site on 30<sup>th</sup> December (PH). Also, one at Knowle Close, Great Sutton on 16<sup>th</sup> July (MBe).



*Mel Bellingham*



35.151 *Carpatolechia proximella* (Hübner, 1796)  
One at Midgley Lane, Wildboarclough on 13<sup>th</sup> June and another at the same site five days later (A&JB).

*Alison & Julian Borrow*



35.157 *Recurvaria leucatella* (Clerck, 1759)

Two at Chester Zoo Nature Reserve on 19<sup>th</sup> July (MB, IC, SD, ED, SWH, PH) and one at Newton Lane, Tattenhall on 24<sup>th</sup> July (KH).

37.014 *Coleophora coracipennella* (Hübner, 1796)

One at Common Lane, Waverton on 8<sup>th</sup> July (H&BC) and one at Brookledge Lane, Adlington on 9<sup>th</sup> July (SHH), both determined by examination of the genitalia.

37.016 *Coleophora spinella* (Schrank, 1802)

Two larvae at Common Lane, Waverton on 9<sup>th</sup> May. The adult emerged on 10<sup>th</sup> June and was determined by examination of the genitalia, as was another from the same site on 14<sup>th</sup> July (H&BC).

37.022 *Coleophora lusciniaepennella* (Treitschke, 1833)

One (female) at Linley Lane, Alsager on 29<sup>th</sup> June (MD), determined by examination of the genitalia.

37.029 *Coleophora orbitella* (Zeller, 1849)

One at Linley Lane, Alsager on 22<sup>nd</sup> June (MD), determined by examination of the genitalia.

37.035 *Coleophora alcyonipennella* (Kollar, 1832)

One at Carleton Road, Higher Poynton on 22<sup>nd</sup> July (SHH), determined by examination of the genitalia. The third record for Cheshire.

37.044 *Coleophora discordella* (Zeller, 1849)

Larvae seen on bird's-foot trefoil at Macclesfield Road, Whaley Bridge on 25<sup>th</sup> June and three adults at the same site on 22<sup>nd</sup> August (AS).



Angie Seymour

37.046 *Coleophora deauratella* (Lienig & Zeller, 1846)

One at Highfield Road, Hazel Grove on 29<sup>th</sup> June (JWR), determined by examination of the genitalia.

37.050 *Coleophora albidella* ([Denis & Schiffermüller], 1775)

One at Heath Lane Allotment, Little Sutton on 27<sup>th</sup> June (HJ) and one at Meadowsley, Burwardsley on 30<sup>th</sup> June (MRW), both determined by examination of the genitalia.

37.066 *Coleophora laricella* (Hübner, [1817])

One (male) at Linley Lane, Alsager on 7<sup>th</sup> June and another two (one male) at the same site on 13<sup>th</sup> June (MD), determined by examination of the genitalia.

37.071 *Coleophora glaucicolella* (Wood, 1892)

One at Carleton Road, Higher Poynton on 2<sup>nd</sup> July, another at Brookledge Lane, Adlington on 9<sup>th</sup> July (SHH) and one (male) at Linley Lane, Alsager on 15<sup>th</sup> July (MD), all determined by examination of the genitalia.

37.072 *Coleophora otidipennella* (Hübner, [1817])

One flushed from foodplant at Carleton Road, Higher Poynton on 23<sup>rd</sup> May and another from the same site three days later (SHH).

37.073 *Coleophora alticolella* (Zeller, 1849)

One at Hightree Drive, Henbury on 13<sup>th</sup> June (TW), determined by examination of the genitalia.

37.083 *Coleophora saxicolella* (Duponchel, [1843])

One at Heath Lane Allotment, Little Sutton on 25<sup>th</sup> July (HJ), determined by examination of the genitalia.

37.093 *Coleophora peribenanderi* (Toll, 1943)

One at Carleton Road, Higher Poynton on 2<sup>nd</sup> July (SHH), determined by examination of the genitalia. Larval tubes on thistle at Meols on 22<sup>nd</sup> September and cases on thistle at Moreton on 15<sup>th</sup> October (HJ).

37.099 *Coleophora striatipennella* (Nylander [1848])

One at Meadowside, Burwardsley on 30<sup>th</sup> June (MRW), determined by examination of the genitalia.

38.028 *Elachista alpinella* (Stainton, 1854)

One at Carleton Road, Higher Poynton on 23<sup>rd</sup> July (SHH), determined by examination of the genitalia.

38.029 *Elachista luticomella* (Zeller, 1839)

A tenanted mine on cock's-foot at Brushes Valley on 30<sup>th</sup> March (BS).

40.001 *Mompha conturbatella* (Hübner, [1819])

One at Crag Hall Lane, Wildboarclough on 3<sup>rd</sup> July (A&JB).



*Alison & Julian Borrow*

40.009 *Mompha sturnipennella* (Treitschke, 1833)

One at Deansfield Way, Elton on 21<sup>st</sup> June (MB, SWH).



40.011 *Mompha langiella* (Hübner, 1796)

Two (in garage) at Carleton Road, Higher Poynton on 28<sup>th</sup> May (SHH), one at Kent Close, Bromborough on 31<sup>st</sup> August (PH) and another at Dane Road, Sale on 6<sup>th</sup> October (JPS).

*Paul Hopkins*

42.002 *Stathmopoda pedella* (Linnaeus, 1761)

One at Shannon Close, Willaston, Nantwich on 17<sup>th</sup> July (DT).

45.013 *Stenoptilia bipunctidactyla* (Scopoli, 1763)

One at Highfield Road, Ellesmere Port on 3<sup>rd</sup> August (PMo).

45.028 *Capperia britanniodactylus* (Gregson, 1869)  
One at Midgley Lane, Wildboarclough on 15<sup>th</sup> July (A&JB, JO). Wood Sage was growing nearby. This is the first record for Wood Sage Plume in Cheshire since 1968, one of only ten for the county.



*Alison & Julian Borrow*

46.001 *Schreckensteinia festaliella* (Hübner, [1819])  
One at Dawlish Road, Wallasey on 28<sup>th</sup> May (CS).

49.005 *Epagoge grotiana* (Fabricius, 1781)  
One at Carden Park on 1<sup>st</sup> July (MRW).

49.020 *Argyrotaenia ljugiana* (Thunberg, 1797)  
One at Carleton Road, Higher Poynton on 10<sup>th</sup> September (SHH), determined by examination of the genitalia. Presumably a late second generation moth.

49.021 *Ptycholomoides aeriferana* (Herrich-Schäffer, 1851)  
One at Carleton Road, Higher Poynton on 17<sup>th</sup> July (SHH).

49.022 *Ptycholoma lecheana* (Linnaeus, 1758)  
One at Heath Lane Allotment, Little Sutton on 13<sup>th</sup> June (HJ).

49.023 *Pandemis cinnamomeana* (Treitschke, 1830)  
One at Cedarways, Appleton Park, Warrington on 18<sup>th</sup> July (CW) and one at Meadowside, Burwardsley on 8<sup>th</sup> September (MRW).



*Mike Whiteside*

49.030 *Cacoecimorpha pronubana* (Hübner, [1799])  
One at Meadowside, Burwardsley on 9<sup>th</sup> July (MRW), one at Cedarways, Appleton Park, Warrington on 22<sup>nd</sup> July (CW) and one at Church Way, Wybunbury on 6<sup>th</sup> September (AML).

49.033 *Aphelia viburnana* ([Denis & Schiffmüller], 1775)  
A larva in spinning on bilberry at Brushes Valley on 28<sup>th</sup> February (BS).

49.049 *Cnephasia incertana* (Treitschke, 1835)

One (male) at Linley Lane, Alsager on 12<sup>th</sup> June and another (male) at the same site on 2<sup>nd</sup> July (MD), both determined by examination of the genitalia.

49.050 *Cnephasia stephensiana* (Doubleday, [1849])

One at Linley Lane, Alsager on 16<sup>th</sup> July and another (female) at the same site on 21<sup>st</sup> July (MD). Also, one at Knowle Close, Great Sutton on 20<sup>th</sup> July (MBe). All were determined by examination of the genitalia.

49.063 *Acleris bergmanniana* (Linnaeus, 1758)

One at West Kirby Sand Dunes on 20<sup>th</sup> June (HD) and one at Linley Lane, Alsager on 2<sup>nd</sup> July (MD).



Harry Davies

49.082 *Acleris hyemana* (Haworth, 1811)

One (an odd variant with no white scales) at Thornton Avenue, Higher Bebington on 7<sup>th</sup> October and another, more typical specimen, at the same site four days later (CD).



Clive Donaldson

49.090 *Eulia ministrana* (Linnaeus, 1758)

One at Bickerton/Larkton Hill on 16<sup>th</sup> May (MKB) and one at Back Lane, Shavington on 2<sup>nd</sup> June (RB).



Maile Keagle Belanger

49.096 *Hysterophora maculosana* (Haworth, 1811)

One on bluebells in a grassy clearing at Hillbridge Wood, Taxal on 4<sup>th</sup> June (JEH).

49.111 *Eupoecilia angustana* (Hübner, [1799])

One at Woodlands Drive, Chester on 26<sup>th</sup> June (AN), one at Cedarways, Appleton Park, Warrington on the following day (CW) and two at Thurstaston Common on 27<sup>th</sup> July (CD).

49.123 *Aethes beatricella* (Walsingham, 1898)

One at Gowy Meadows CWT on 18<sup>th</sup> June (SWH), one at Woodlands Drive, Chester on 25<sup>th</sup> June (AN) and one at Woodlands Drive, Chester on 2<sup>nd</sup> July (AN).



49.134 *Cochylis roseana* (Haworth, 1811)  
One at Dane Road, Sale on 26<sup>th</sup> July (JPS). Only the third Cheshire record since the nineteenth century.

*John P Shaughnessy*



49.153 *Apotomis sauciana* (Frölich, 1828)  
One at Midgley Lane, Wildboarclough on 11<sup>th</sup> August (A&JB).

*Alison & Julian Borrow*



49.155 *Hedya salicella* (Linnaeus, 1758)  
One at Highfield Road, Ellesmere Port on 14<sup>th</sup> June (PMo), one at Common Lane, Waverton on 8<sup>th</sup> July (H&BC) and another at Burton Mere Wetlands RSPB (East) on 25<sup>th</sup> September (GJ).

49.178 *Stictea mygindiana* ([Denis & Schiffermüller], 1775)  
A larva in cowberry spinning at Brushes Valley on 30<sup>th</sup> March (BS).

49.180 *Piniphila bifasciana* (Haworth, 1811)  
One at Brookledge Lane, Adlington on 9<sup>th</sup> July (SHH) and one at Sudworth Road, New Brighton on 19<sup>th</sup> July (TWa), taking the total number of Cheshire records to twenty

*Tricia Wain*



*Steve Hind*



49.185 *Lobesia littoralis* (Westwood & Humphreys, 1845)  
One at Common Lane, Waverton on 12<sup>th</sup> June, one at the same site on 14<sup>th</sup> July and three, again at the same site, on 22<sup>nd</sup> August (H&BC).

49.186 *Endothenia gentianaeana* (Hübner, [1799])  
Five larvae, with no anal combs, in teasel heads at Sale on 17<sup>th</sup> January (BS).



49.193 *Endothenia quadrimaculana* (Haworth, 1811)  
One at Linley Lane, Alsager on 9<sup>th</sup> July (MD).

49.211 *Ancylis myrtillana* (Treitschke, 1830)  
Two at Midgley Lane, Wildboarclough on 28<sup>th</sup> May (A&JB).

49.238 *Epinotia cruciana* (Linnaeus, 1761)  
One at Wellington Close, Ellesmere Port on 21<sup>st</sup> July (HJ)  
and another at the same site on the following day (HJ).

49.242 *Epinotia nanana* (Treitschke, 1835)  
One at Carleton Road, Higher Poynton on 2<sup>nd</sup> July (SHH), determined by examination of the genitalia.

49.244 *Epinotia subocellana* (Donovan, 1806)  
One at Carleton Road, Higher Poynton on 13<sup>th</sup> June (SHH).

49.245 *Epinotia tetraquetra* (Haworth, 1811)  
At the same site - Linley Lane, Alsager - on 31<sup>st</sup> May, on 5<sup>th</sup> June and on 8<sup>th</sup> June (MD).

49.251 *Epinotia rubiginosana* (Herrich-Schäffer, 1851)  
Also at the same site - Linley Lane, Alsager - on 2<sup>nd</sup> June, on 11<sup>th</sup> June and on 15<sup>th</sup> June (MD).

49.252 *Epinotia tedella* (Clerck, 1759)  
One at Carleton Road, Higher Poynton on 10<sup>th</sup> June (SHH).

49.264 *Eucosma obumbratana* (Lienig & Zeller, 1846)  
Two at Aldford on 25<sup>th</sup> July (AE).

49.272 *Eucosma tripoliana* (Barrett, 1880)  
One at Burton Mere Wetlands RSPB (West) on 17<sup>th</sup> July (GJ) and three at Bendee Road, Little Neston on 21<sup>st</sup> July (SK).

49.281 *Gypsonoma sociana* (Haworth, 1811)  
One at Graham Road, Blacon on 16<sup>th</sup> June (DD).

49.284 *Epiblema sticticana* (Fabricius, 1794)  
Three at Stockport on 1<sup>st</sup> June and another nearby on 22<sup>nd</sup> June, all on coltsfoot (SHH) and one at Burton Mere Wetlands RSPB (East) on 27<sup>th</sup> June (HD).



Harry Davies



49.285 *Epiblema scutulana* ([Denis & Schiffmüller], 1775)  
One on marsh thistle at Timbersbrook on 30<sup>th</sup> May (JHS) and one at Midgley Lane, Wildboarclough on 5<sup>th</sup> June (A&JB).

Jack H Swan

49.296 *Notocelia incarnatana* (Hübner, [1800])

One at Thornton Avenue, Higher Bebington on 9<sup>th</sup> July and another at the same site on 16<sup>th</sup> July (CD). Also one at Sudworth Road, New Brighton on 14<sup>th</sup> July 2021 (TWa).

49.311 *Dichrorampha aeratana* (Pierce & Metcalfe, 1915)

One of several flying among Ox-eye Daisy by Portwood roundabout on 1<sup>st</sup> June (SHH), determined by examination of the genitalia.

49.315 *Dichrorampha simpliciana* (Haworth, 1811)

One at Heath Lane allotment, Little Sutton on 11<sup>th</sup> August (HJ), determined by examination of the genitalia.

49.319 *Dichrorampha flavidorsana* (Knaggs, 1867)

On tansy flowers at the same site - Carleton Road, Higher Poynton - on 7<sup>th</sup> July, and on 19<sup>th</sup> and 20<sup>th</sup> August (SHH).

49.320 *Dichrorampha alpinana* (Treitschke, 1830)

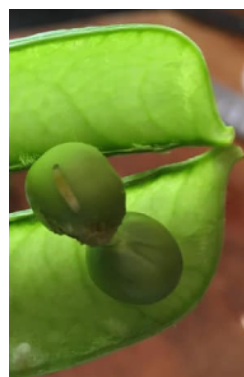
Two, close to ox-eye daisy, at Macclesfield Road, Whaley Bridge on 1<sup>st</sup> July, and another on ox-eye daisy, at the same site a day later (AS).



Angie Seymour

49.321 *Dichrorampha petiverella* (Linnaeus, 1758)

One at Gladstone Road, Chester on 27<sup>th</sup> June (AMo).



49.324 *Cydia nigricana* (Fabricius, 1794)

A larva in a pea pod in the garden at Foxfield Lane, Winsford on 23<sup>rd</sup> July, then another four at the same site three days later (AH). Also, one at Deansfield Way, Elton on 2<sup>nd</sup> August (MB, SWH).

Alida Heston

49.330 *Cydia conicolana* (Heylaerts, 1874)

One at Knowle Close, Great Sutton on 10<sup>th</sup> June (MBe), determined by examination of the genitalia. A new species for Cheshire.



Mel Bellingham

49.334 *Cydia cosmophorana* (Treitschke, 1835)  
One at Carleton Road, Higher Poynton on 9<sup>th</sup> June (SHH), determined by examination of the genitalia. The sixth record of this species in Cheshire.

Steve Hind

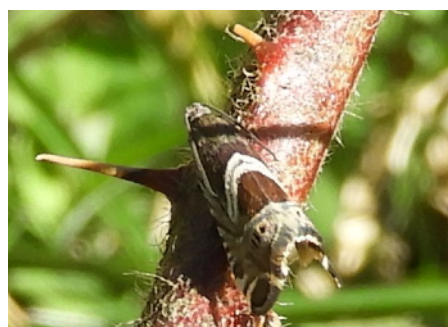


49.345 *Lathronympha strigana* (Fabricius, 1775)  
One at Linley Lane, Alsager on 29<sup>th</sup> August (MD)

49.347 *Grapholita compositella* (Fabricius, 1775)  
All at the same site - Macclesfield Road, Whaley Bridge - one on 16<sup>th</sup> June, one on 23<sup>rd</sup> June and one on 7<sup>th</sup> July (AS).

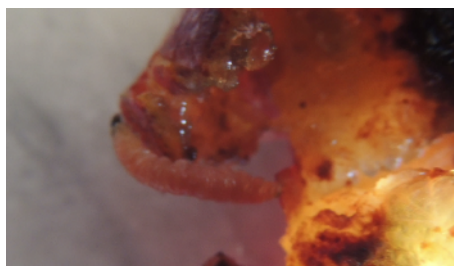
49.354 *Grapholita jungiella* (Clerck, 1759)  
One at Cheadle Heath on 22<sup>nd</sup> April (DH-T) and another, on the same day, at Dane-in-Shaw pasture (JHS). Also, one at Winsfield Road, Hazel Grove on 15<sup>th</sup> June (PJH).

Jack H Swan



49.356 *Grapholita lobarzewskii* (Nowicki, 1860)  
One, to an SKI lure, at Kent Close, Bromborough on 26<sup>th</sup> June (PH) and another, on the inside of a garage window, where apples had been stored at Carleton Road, Higher Poynton on 1<sup>st</sup> July (SHH), determined by examination of the genitalia. The only previous Cheshire record is at Willaston, Nantwich, in 2018.

49.357 *Grapholita funebrana* (Treitschke, 1835)  
One at Shannon Close, Willaston, Nantwich on 14<sup>th</sup> July (DT) and one at Carleton Road, Higher Poynton on 22<sup>nd</sup> July (SHH), both determined by examination of the genitalia. Also, pink larvae in every ripe plum picked from a small plum tree at Randle Bennett Close, Elworth on 19<sup>th</sup> August 2021 (PFA), taking the total number of Cheshire records to 22.



Pete Atherton

49.363 *Pammene argyrana* (Hübner, [1799])  
One, to a pheromone lure for *Grapholita lobarzewskii* at Kent Close, Bromborough on 20<sup>th</sup> April (PH), determined by examination of the genitalia. Also, one at Common Lane, Waverton on 26<sup>th</sup> April (H&BC)

Helen & Bob Coan



49.364 *Pammene suspectana* (Lienig & Zeller, 1846)

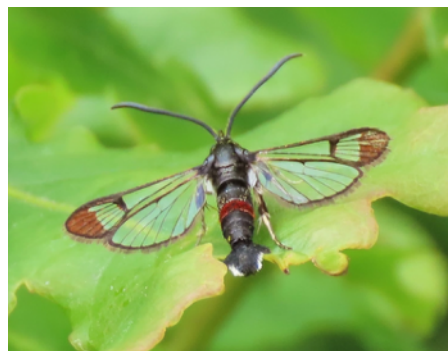
One, attracted to a pheromone lure for *Grapholita molesta*, at Kent Close, Bromborough on 27<sup>th</sup> May (PH), determined by examination of the genitalia. A new species for Cheshire.

49.373 *Pammene spiniana* (Duponchel, [1843])

A larva at Waverton Gorse on 15<sup>th</sup> April (H&BC). The adult emerged on 21<sup>st</sup> June and was determined by examination of the genitalia. It was only the fourth Cheshire record.

52.008 **Red-tipped Clearwing** *Synanthedon formicaeformis* (Esper, 1782)

One at Park Farm, Pulford on 6<sup>th</sup> June (JW), and one, attracted to the FOR lure, near the River Dee at Aldford on 13<sup>th</sup> June (GJ). There are only three previous Cheshire records - and one of those was arguably in VC59!



Jon Wainwright



52.012 **Yellow-legged Clearwing** *Synanthedon vespiformis* (Linnaeus, 1761)

One, to the VES lure, at Kent Close, Bromborough on 9<sup>th</sup> July (PH). There are six previous Cheshire records.

Paul Hopkins

62.024 *Rhodophaea formosa* (Haworth, 1811)

One at Shannon Close, Willaston, Nantwich on 11<sup>th</sup> July (DT). The third Cheshire record.



David Taylor

62.025 *Dioryctria sylvestrella* (Ratzeburg, 1840)

One at Cedarways, Appleton Park, Warrington on 17<sup>th</sup> September (CW), determined by examination of the genitalia. The two previous Cheshire records were at Alsager.

62.027 *Dioryctria simplicella* (Heinemann, 1863)

One at Badger Bait, Little Neston on 10<sup>th</sup> September (GJ), determined by examination of the genitalia. The fifth Cheshire record.

62.038 *Acrobasis consociella* (Hübner, [1813])

One at Linley Lane, Alsager on 13<sup>th</sup> July and another at the same site on 19<sup>th</sup> July (MD).

62.059 *Phycitodes saxicola* (Vaughan, 1870)

One at Knowle Close, Great Sutton on 11<sup>th</sup> July (MBe) and one at Badger Bait, Little Neston on 2<sup>nd</sup> September (GJ). Both determined by examination of the genitalia.



62.062 *Plodia interpunctella* (Hübner, [1813])  
One on the pantry door in the kitchen at Gatley on 2<sup>nd</sup> April (CH).

62.074 Large Tabby *Aglossa pinguinalis* (Linnaeus, 1758)  
One at Chester Zoo on 9<sup>th</sup> May and another there on 23<sup>rd</sup> August (PR). Also, one at Wistaston on 24<sup>th</sup> July (JL).



Julie Lightfoot



62.077 *Endotricha flammealis* ([Denis & Schiffermüller], 1775)  
One at Woodlands Drive, Chester on 23<sup>rd</sup> July (AN).  
This is only the second record of the species in Cheshire, the first being at Carrington Moss in 1922.

Alex Neal

63.007 *Pyrausta purpuralis* (Linnaeus, 1758)  
One at Midgley Lane, Wildboarclough on 18<sup>th</sup> July (A&JB, JO), two or more found on apple mint during the day at Highfield Road, Ellesmere Port on 28<sup>th</sup> July (PMo) and one at Holly Court, Helsby on 12<sup>th</sup> August (MJ&GO).



Mandy Jervis & Glyn Owen

63.014 *Sitochroa palealis* ([Denis & Schiffermüller], 1775)  
One seen resting on thistle on the Sea Defence path, near the cafe and car park, at Moreton on 24<sup>th</sup> July (JK). This was the fourth record of this species in Cheshire; the first was also at Moreton, in 2018.



Jason King



63.016 *Anania fuscalis* ([Denis & Schiffermüller], 1775)

One at St Georges Avenue, Timperley on 24<sup>th</sup> July (SB). The sixteenth Cheshire record, and only the fifth since 1955.



Steven Bell

63.017 *Anania lancealis* ([Denis & Schiffermüller], 1775)

Two at Burton Mere Wetlands RSPB (East) on 8<sup>th</sup> July and another at the same site on 21<sup>st</sup> July (GJ).

63.021 *Anania terrealis* (Treitschke, 1829)

One at Dane Road, Sale on 21<sup>st</sup> July (JPS).

63.046 *Duponchelia fovealis* (Zeller, 1847)

One at Willaston, Wirral on 25<sup>th</sup> October (SA).

[Correction to last year's report: the specimen was found at Poynton, not - as originally stated - at Bollin Valley, Prestbury].



Shane Atkinson

63.060 *Evergestis pallidata* (Hufnagel, 1767)

One at Linley Lane, Alsager on 16<sup>th</sup> July (MD), one at Aston Lane, Aston on 19<sup>th</sup> July (PQ) and another at Aldford on 25<sup>th</sup> July (AE).

63.062 *Scoparia subfusca* Haworth, 1811

Two at Nursery Road, Alsager on 3<sup>rd</sup> August (MHD).

63.091 *Agriphila latistria* (Haworth, 1811)

One at Dane Road, Sale on 20<sup>th</sup> August (JPS).

63.099 *Catoptria pinella* (Linnaeus, 1758)

One at Dawlish Road, Wallasey on 2<sup>nd</sup> August (CS).

63.117 *Parapoynx stratiotata* (Linnaeus, 1758)

One at Coole Fishery, near Audlem on 14<sup>th</sup> June (PG) and one at Burton Mere Wetlands RSPB (East) on 21<sup>st</sup> July (GJ).

63.120 *Schoenobius gigantella* ([Denis & Schiffermüller], 1775)

Two, with wing-span 38mm, at Chester Zoo Nature Reserve on 19<sup>th</sup> July (MB, IC, SD, ED, SWH, PH). This is only the second record of the species in Cheshire, the first being in 2020 at Higher Poynton.

66.008 **Fox Moth** *Macrothylacia rubi* (Linnaeus, 1758)  
One at Midgley Lane, Wildboarclough on 28<sup>th</sup> May (A&JB).

69.007 **Pine Hawk-moth** *Sphinx pinastri* Linnaeus, 1758  
One at Midgley Lane, Wildboarclough on 2<sup>nd</sup> July (A&JB)  
and one at Acre Lane, Cheadle Hulme on 21<sup>st</sup> July (DBo).  
There are only seven previous Cheshire records.



Dave Booth

70.002 **Purple-bordered Gold** *Idaea muricata* (Hufnagel, 1767)  
Six at Wybunbury on 2<sup>nd</sup> July (RB).

70.023 **Mullein Wave** *Scopula marginepunctata* (Goeze, 1781)  
One at Wistaston on 24<sup>th</sup> August (JL). All but one of the  
previous twelve Cheshire records are from this century.



Julie Lightfoot



70.027 **Cream Wave**  
*Scopula floslactata* (Haworth, 1809)  
One at Tirley Garth on 2<sup>nd</sup> June (SR) and one at Marbury  
Country Park on 21<sup>st</sup> July (DJ).

Steve Richardson

70.037 **Clay Triple-lines** *Cyclophora linearia* (Hübner, [1799])  
One at Kent Close, Bromborough on 15<sup>th</sup> June (PH) and another at the same site on 31<sup>st</sup> July  
(PH).

70.038 **Vestal** *Rhodometra sacraria* (Linnaeus, 1767)  
One at Burton Mere Wetlands RSPB (East) on 11<sup>th</sup>  
September (GJ).



Graham Jones



70.041 **July Belle** *Scotopteryx luridata* (Hufnagel, 1767)

One at Midgley Lane, Wildboarclough on 13<sup>th</sup> June (A&JB), determined by examination of the genitalia. There are only eighteen previous Cheshire records.

*Alison & Julian Borrow*

70.046 **Oblique Carpet** *Orthonama vittata* (Borkhausen, 1794)

Two at Burton Mere Wetlands RSPB (East) on 10<sup>th</sup> June (GJ), one at Boughton Heath allotments on 11<sup>th</sup> June (CJ), one at Midgley Lane, Wildboarclough on 31<sup>st</sup> July (A&JB) and one at Back Lane, Shavington on 24<sup>th</sup> August (RB).

*Clive Jones*



70.047 **Gem** *Nycterosea obstipata* (Fabricius, 1794)

One at Burton Mere Wetlands RSPB (East) on 11<sup>th</sup> September (GJ).

*Graham Jones*

70.048 **Red Carpet** *Xanthorhoe decoloraria* (Esper, [1806])

One at Midgley Lane, Wildboarclough on 18<sup>th</sup> July (A&JB, JO). The twenty-first record for Cheshire.

70.051 **Red Twin-spot Carpet** *Xanthorhoe spadicearia* ([Denis & Schiffermüller], 1775)

One at Heath Lane allotment, Little Sutton on 30<sup>th</sup> August (HJ).

70.068 **Beautiful Carpet** *Mesoleuca albicillata* (Linnaeus, 1758)

One at Marbury Country Park on 19<sup>th</sup> June and another at the same site on 19<sup>th</sup> July (DJ).

*David Bedford*







70.069 **Dark Spinach** *Pelurga comitata* (Linnaeus, 1758)

One at Kingsley on 18<sup>th</sup> July (PM).

*Paul Miller*

70.070 **Mallow** *Larentia clavaria* (Haworth, 1809)  
One at Newton Lane, Tattenhall on 25<sup>th</sup> September (KH).



*Kate Hughes*

70.108 **Pale November Moth** *Epirrita christyi* (Allen, 1906)  
One at Burton Mere Wetlands RSPB (East) on 26<sup>th</sup> October (GJ), determined by examination of the genitalia. Of four previous Cheshire records, two were also at the RSPB site.

70.109 **Autumnal Moth** *Epirrita autumnata* (Borkhausen, 1794)  
One (male) at Linley Lane, Alsager on 15<sup>th</sup> October (MD), determined by examination of the genitalia.

70.115 **Welsh Wave** *Venusia cambrica* (Curtis, 1839)  
One at Kennel Wood, Lyme Park on 18<sup>th</sup> July (AHa) and one at the same site on 26<sup>th</sup> July (JD).



*Nigel Earp*



70.119 **Dark Umber** *Philereme transversata* (Hufnagel, 1767)  
One at Goyt Road, Disley on 25<sup>th</sup> July (AB, DBi). There are only five previous Cheshire records.

*Andy Bissitt*

70.121 **Scallop Shell** *Rheumaptera undulata* (Linnaeus, 1758)  
One at Farr Hall Drive, Heswall on 28<sup>th</sup> June (JJ), one at Meadowside, Burwardsley on 7<sup>th</sup> July (MRW), one at Badger Bait, Little Neston on 10<sup>th</sup> July (GJ), one at Pikelow Farm, Marton - Wildflower Meadow on 16<sup>th</sup> July (PMH) and one at Woodlands Drive, Chester on 21<sup>st</sup> July (AN).

70.123 **Tissue** *Triphosa dubitata* (Linnaeus, 1758)

Three at Queens Parlour Cave, Raw Head on 27<sup>th</sup> January (MRW) and one hibernating- the resting position suggesting a moribund individual - at the same site on 2<sup>nd</sup> December (CJ).



70.131 **Twin-spot Carpet** *Mesotype didymata* (Linnaeus, 1758)

One at Midgley Lane, Wildboarclough on 31<sup>st</sup> July and one at the same site on 13<sup>th</sup> August (A&JB).

*Alison & Julian Borrow*

70.143 **Sloe Pug** *Pasiphila chloerata* (Mabille, 1870)

One at Brookledge Lane, Adlington on 9<sup>th</sup> July (SHH), determined by examination of the genitalia.



70.146 **Haworth's Pug** *Eupithecia haworthiata*

Doubleday, 1856

One at Woodlands Drive, Chester on 30<sup>th</sup> June (AN) and one at Hartford Road, Davenham on 23<sup>rd</sup> July (GO). Only three - all from Burwardsley - of the previous fifteen Cheshire records are from this century.

*Greg Osborn*



70.159 **Cypress Pug** *Eupithecia phoeniceata* (Rambur, 1834)

One at Verdin Close, Moulton on 29<sup>th</sup> August (PB) and another at the same site the next day. (Possibly the same moth, even though it had been released a fair distance away). One at Weston Grove, Upton, Chester on 9<sup>th</sup> September (RW) and one at Wharton on 17<sup>th</sup> September (JLa). There are only two previous Cheshire records, from Elton in 2019 and from Bromborough in 2020.

*Roger Wilkinson*



70.162 **Dwarf Pug** *Eupithecia tantillaria* (Boisduval, 1840)

One at Coppice Avenue, Disley on 31<sup>st</sup> May (NE), one at Linley Lane, Alsager on the same day and another, at the same site, on 15<sup>th</sup> July (MD). One at Thornton Common Road, Thornton Hough on 12<sup>th</sup> June (PS) and one at Hightree Drive, Henbury on 13<sup>th</sup> June (TW).

*Nigel Earp*



70.163 **Larch Pug** *Eupithecia lariciata* (Freyer, 1841)

One (male) at Linley Lane, Alsager on 15<sup>th</sup> July (MD), determined by examination of the genitalia.

70.164 **Pauper Pug** *Eupithecia egenaria* (Herrich-Schäffer, 1848)

One at Linley Lane, Alsager on 29<sup>th</sup> May (MD). Of four previous Cheshire records, three are also from Alsager.

70.166 **Plain Pug** *Eupithecia simpliciata* (Haworth, 1809)

One at Linley Lane, Alsager on 1<sup>st</sup> August (MD).



70.177 **Satyr Pug** *Eupithecia satyrata* (Hübner, [1813])  
Two at Church Way, Wybunbury; one on 16<sup>th</sup> June and another on 29<sup>th</sup> June (AML).

*Angela Lidgett*



70.188 **Bordered Pug** *Eupithecia succenturiata* (Linnaeus, 1758)

Two at Graham Road, Blacon; one on 21<sup>st</sup> July and another on 22<sup>nd</sup> August (DD). Also, one at Cross Hey, Handbridge on 22<sup>nd</sup> July (AI).

*Andy Ingham*

70.191 **Manchester Treble-bar** *Carsia sororiata* (Hübner, [1813])

One at Wybunbury on 2<sup>nd</sup> July (RB).



*Roger Benson*

70.195 **Streak** *Chesias legatella* ([Denis & Schiffermüller], 1775)

Two at Burton Mere Wetlands RSPB (West) on 11<sup>th</sup> October (GJ), one at Linley Lane, Alsager on 13<sup>th</sup> October and another at the same site on 15<sup>th</sup> October (MD).

70.223 **Barred Umber** *Plagodis pulveraria* (Linnaeus, 1758)

One at Broomhall, Nantwich on 2<sup>nd</sup> June (PG). The first Cheshire record since 1993. Twelve of the previous seventeen records are from the 19<sup>th</sup> Century.



*Paul Griffiths*



70.288 **Brussels Lace** *Cleorodes lichenaria* (Hufnagel, 1767)  
One at Newton Lane, Tattenhall on 10<sup>th</sup> October (KH). This is the first record of this species in Cheshire since 1903.

Kate Hughes

70.295 **Grass Wave** *Perconia strigillaria* (Hübner, [1787])  
Twenty at Abbots Moss on 16<sup>th</sup> June and six at the same site on 27<sup>th</sup> June (PB). Also, one at Shemmy Moss on 26<sup>th</sup> June (SR).



Paul Brewster

70.297 **Grass Emerald** *Pseudoterpna pruinata* (Hufnagel, 1767)  
One at Graham Road, Blacon on 9<sup>th</sup> July (DD).



Dean Davies

70.303 **Little Emerald** *Jodis lactearia* (Linnaeus, 1758)  
One at Upton, Chester on 12<sup>th</sup> June (PR), one at Back Lane, Shavington on 13<sup>th</sup> June (RB) and one at Weston Grove, Upton, Chester on 14<sup>th</sup> June (RW). Also, one at Carleton Road, Higher Poynton on 26<sup>th</sup> June (SHH) and one at Chester Zoo Nature Reserve on 19<sup>th</sup> July (IC).

71.007 **Poplar Kitten** *Furcula bifida* (Brahm, 1787)  
One at Holborn Hill, Tranmere on 17<sup>th</sup> June (DTr) and one at Pembroke Close, Handbridge on 24<sup>th</sup> June (KP). Also, one at Wistaston on 2<sup>nd</sup> August and another at the same site the next day (JL), and one at Tencherfield, Nantwich on 9<sup>th</sup> August (MH).



71.010 **Marbled Brown** *Drymonia dodonaea* ([Denis & Schiffermüller], 1775)  
One at Meadowside, Burwardsley on 29<sup>th</sup> May (MRW) and one at Arden House, Duckington on 30<sup>th</sup> May (FMCC). Three of the six previous Cheshire records were also at Burwardsley.

Fraser McConnell

72.007 **Beautiful Snout** *Hypena crassalis* (Fabricius, 1787)  
One at Willocks Wood on 10<sup>th</sup> June (AMR), and one at Linley Lane, Alsager on 28<sup>th</sup> June (MD). One at Midgley Lane, Wildboarclough on 30<sup>th</sup> June and another at the same site on 9<sup>th</sup> July (A&JB). Also, one at Kennel Wood, Lyme Park on 18<sup>th</sup> July (AHa).

72.038 **Four-dotted Footman** *Cybosia mesomella* (Linnaeus, 1758)  
Two at Abbots Moss on 17<sup>th</sup> July (PB).



Paul Brewster



72.076 **Clifden Nonpareil** *Catocala fraxini* (Linnaeus, 1758)  
One at Kingsley on 24<sup>th</sup> September (PM). The first Cheshire record this century. The nine previous records stretch from 1997 back to 1846.

*Paul Miller*

73.014 **Golden Plusia** *Polychrysis moneta* (Fabricius, 1787)  
One at Church Walks, Christleton on 19<sup>th</sup> July (CJ) and one at Macclesfield Road, Whaley Bridge on 24<sup>th</sup> September (AS). Four, bred from garden larvae, at Ashworth Close, Bowdon, Altrincham (RH).



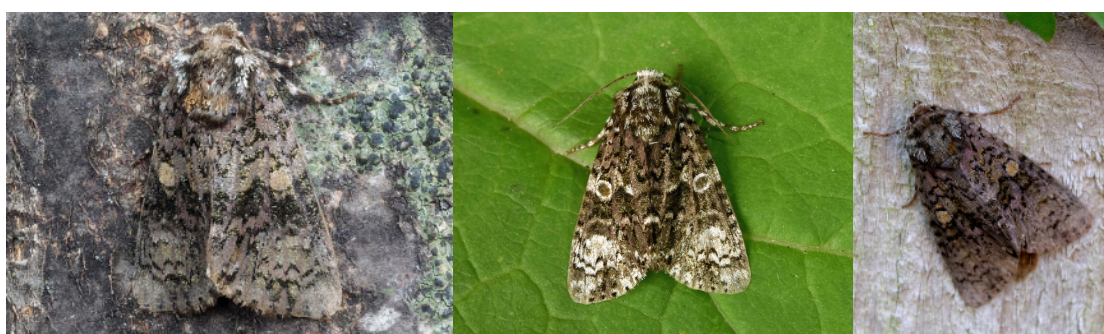
*Clive Jones*



73.042 **Light Knot Grass** *Acronicta menyanthidis* (Esper, 1798)  
One at Manor Crescent, Tytherington on 9<sup>th</sup> June (DJM).

*Jeanette & Dave Maddy*

73.047 **Coronet** *Craniophora ligustri* ([Denis & Schiffermüller], 1775)  
One at Hartford Road, Davenham on 14<sup>th</sup> July (GO), one (f. coronula) at Church Walks, Christleton on 19<sup>th</sup> July (CJ) and another (f. coronula) at Graham Road, Blacon on 22<sup>nd</sup> July (DD). The record at Burton Mere Wetlands in 2017 is the only other one for this species in Cheshire since 1885.



*Clive Jones*

*Greg Osborn*

*Dean Davies*



73.048 **Small Yellow Underwing** *Panemeria tenebrata* (Scopoli, 1763)

One at Swettenham Meadows on 27<sup>th</sup> May and one at Astbury Mere on 8<sup>th</sup> June (both JHS). Also, two at Burton Mere Wetlands RSPB (West) on 22<sup>nd</sup> June (GJ).



73.053 **Chamomile Shark** *Cucullia chamomillae* ([Denis & Schiffermüller], 1775)

One at Upton Road, Moreton on 31<sup>st</sup> March (GC).

Graham Connolly

73.118 **Haworth's Minor** *Celaena haworthii* (Curtis, 1829)

One at Macclesfield Road, Whaley Bridge on 3<sup>rd</sup> September (AS) and one at Broadbottom Road, Mottram on 8<sup>th</sup> September (BU).



Angie Seymour

Bill Underwood

73.126 **Saltern Ear** *Amphipoea fucosa* (Freyer, 1830)

One at Badger Bait, Little Neston on 4<sup>th</sup> August, two at the same site on 10<sup>th</sup> August and another on 23<sup>rd</sup> August. Fourteen (six males) at Burton Mere Wetlands RSPB (East) on 12<sup>th</sup> August and another five at the same site on 25<sup>th</sup> August. (GJ), determined by examination of the genitalia.

73.127 **Large Ear** *Amphipoea lucens* (Freyer, 1845)

One (male) at Linley Lane, Alsager on 9<sup>th</sup> August (MD) and one at Burton Mere Wetlands RSPB (East) on 25<sup>th</sup> August (GJ), both determined by examination of the genitalia.

73.128 **Ear Moth** *Amphipoea oculea* (Linnaeus, 1761)

One at Meadowside, Burwardsley on 24<sup>th</sup> July (MRW), one (male) at Linley Lane, Alsager on 6<sup>th</sup> August (MD) and one at Badger Bait, Little Neston on 21<sup>st</sup> August (GJ), all determined by examination of the genitalia.

73.141 **Brown-veined Wainscot** *Archanara dissoluta* (Treitschke, 1825)

One at Burton Mere Wetlands RSPB (East) on 10<sup>th</sup> June (GJ) and one at Chester Zoo Nature Reserve on 12<sup>th</sup> August (SD).



73.151 **Webb's Wainscot** *Globia sparganii* (Esper, 1789)  
One at Verdin Close, Moulton on 11<sup>th</sup> September (PB). The third Cheshire record, after two in 2018.

Paul Brewster

73.155 **Clouded Brindle** *Apamea epomidion* (Haworth, 1809)  
One at Kent Close, Bromborough on 2<sup>nd</sup> July (PH), one at Brookdale Avenue, Marple on 8<sup>th</sup> July (SC), one at Carleton Road, Higher Poynton on 10<sup>th</sup> July (SHH) and one at Graham Road, Blacon on 14<sup>th</sup> July (DD).



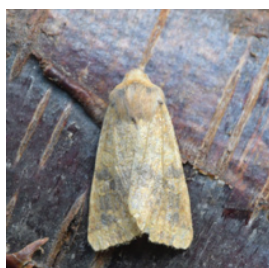
Paul Hopkins

73.169 **Common Rustic** *Mesapamea secalis* (Linnaeus, 1758)  
Two at Burton Mere Wetlands RSPB (East) on 8<sup>th</sup> July (GJ), one at Highfield Road, Hazel Grove on 15<sup>th</sup> July (JWR), one at Knowle Close, Great Sutton on 13<sup>th</sup> August (MBe) and one (male) at Linley Lane, Alsager on 21<sup>st</sup> August (MD). All determined by examination of the genitalia.

73.170 **Lesser Common Rustic** *Mesapamea didyma* (Esper, 1788)  
One at Burton Mere Wetlands RSPB (East) on 8<sup>th</sup> July and another at the same site on 25<sup>th</sup> August (GJ). One at Knowle Close, Great Sutton on 2<sup>nd</sup> August and another at the same site on 4<sup>th</sup> August (MBe). All determined by examination of the genitalia.

73.173 **Marbled Minor** *Oligia strigilis* (Linnaeus, 1758)  
One at Knowle Close, Great Sutton on 8<sup>th</sup> June (MBe), one at Highfield Road, Hazel Grove on 30<sup>th</sup> June and five (two males) at the same site on 13<sup>th</sup> July (JWR). Two at Burton Mere Wetlands RSPB (East) on 8<sup>th</sup> July (GJ) and one at Linley Lane, Alsager on 9<sup>th</sup> July (MD). All determined by examination of the genitalia.

73.174 **Tawny Marbled Minor** *Oligia latruncula* ([Denis & Schiffermüller], 1775)  
One at Knowle Close, Great Sutton on 31<sup>st</sup> May (MBe), two (males) at Linley Lane, Alsager on 1<sup>st</sup> July and another (male) at the same site on 5<sup>th</sup> July (MD). All determined by examination of the genitalia.



73.183 **Dusky-lemon Sallow** *Cirrhia gilvago* ([Denis & Schiffermüller], 1775)  
One at Linley Lane, Alsager on 15<sup>th</sup> September (MD), one at Meadowside, Burwardsley on 17<sup>th</sup> September (MRW) and one at Newton Lane, Tattenhall on 10<sup>th</sup> October (KH).

Kate Hughes





73.207 **Golden-rod Brindle** *Xylena solidaginis* (Hübner, [1803])  
Three at Midgley Lane, Wildboarclough: on 13<sup>th</sup> August, on 20<sup>th</sup> August (A&JB) and again on 26<sup>th</sup> August (A&JB, JO).

*Alison & Julian Borrow*

73.211 **Angle-striped Sallow** *Enargia paleacea* (Esper, 1791)  
One at Broadbottom Road, Mottram on 23<sup>rd</sup> August and again at the same site three days later (BU). Also, one at Highfield Road, Hazel Grove on 5<sup>th</sup> September (JWR). The five records of this species from the last two years now outnumber the four previous Cheshire records.



*Bill Underwood*



*John Rayner*



73.220 **Minor Shoulder-knot** *Brachylomia viminalis* (Fabricius, [1777])  
One at Peckforton Hill on 13<sup>th</sup> July (MRW), one at Meadowside, Burwardsley on 21<sup>st</sup> July (MRW) and one at Allostock on 7<sup>th</sup> July (PMH).

*Paul Hill*

73.231 **Deep-brown Dart** *Aporophyla lutulenta* ([Denis & Schiffermüller], 1775)  
One at Kingsley on 18<sup>th</sup> July (PM), one at Crewe on 29<sup>th</sup> August (Nigel Baskerville), one at Linley Lane, Alsager on 5<sup>th</sup> September (MD), one at Dawlish Road, Wallasey on 26<sup>th</sup> September (CS) and one at St John's Church, Winsford on 9<sup>th</sup> October (AH).

*Nigel Baskerville*



73.234 **Brindled Ochre** *Dasypolia templi* (Thunberg, 1792)  
One at Midgley Lane, Wildboarclough on 8<sup>th</sup> October (A&JB). A regular guest at the Wildboarclough trap in recent years; there are only fifteen Cheshire records that pre-date its first appearance there in 2017.



*Alison & Julian Borrow*

73.238 **Dark Brocade** *Mniotype adusta* (Esper, 1790)  
One at Midgley Lane, Wildboarclough on 5<sup>th</sup> June (A&JB) and one at Meadowside, Burwardsley on 25<sup>h</sup> June (MRW).



73.246 **Lead-coloured Drab** *Orthosia populeti* (Fabricius, 1781)  
One at Boughton Heath allotments on 19<sup>th</sup> March (CJ) and one at Heath Lane allotment, Little Sutton on 24<sup>th</sup> March (HJ).

*Huw John*

73.248 **Northern Drab** *Orthosia opima* (Hübner, [1809])  
One at Sudworth Road, New Brighton on 31<sup>st</sup> March (TWa). The first in Cheshire since 1983.



*Tricia Wain*

73.257 **Beautiful Yellow Underwing** *Anarta myrtilli* (Linnaeus, 1761)  
A larva at Lindow Common on 29<sup>th</sup> June (Josh Styles) and another larva at Thurstaston Common on 27<sup>th</sup> July (CD).

73.272 **Glaucous Shears** *Papestra biren* (Goeze, 1781)  
Three on different dates at Midgley Lane, Wildboarclough: on 9<sup>th</sup> May, two on 2<sup>nd</sup> June and two on 9<sup>th</sup> June (A&JB).

73.273 **Shears** *Hada plebeja* (Linnaeus, 1761)  
One at Handbridge, Chester on 1<sup>st</sup> June (JW), one at Chester Zoo Nature Reserve on 30<sup>th</sup> June (MB, IC, SD, ED, SWH, PH) and one at Deansfield Way, Elton on 9<sup>th</sup> July (MB, SWH).

73.282 **Varied Coronet** *Hadena compta* ([Denis & Schiffermüller], 1775)  
One at Wistaston on 11<sup>th</sup> June and another at the same site on 23<sup>rd</sup> June (JL). One at Church Way, Wybunbury on 16<sup>th</sup> June (AML). One at Back Lane, Shavington on 23<sup>rd</sup> June and another at the same site on 30<sup>th</sup> June (RB). All but one of fourteen previous Cheshire records are from this century.



Angela Lidgett

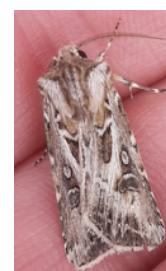
73.290 **Brown-line Bright-eye** *Mythimna conigera* ([Denis & Schiffermüller], 1775)  
One at Burton Mere Wetlands RSPB (West) on 17<sup>th</sup> July (GJ).

73.307 **Pearly Underwing** *Peridroma saucia* (Hübner, [1808])  
One at Dawlish Road, Wallasey on 4<sup>th</sup> September (CS).



Colin Schofield

73.322 **Archer's Dart** *Agrotis vestigialis* (Hufnagel, 1766)  
One at Upton Road, Moreton on 1<sup>st</sup> July (GC) and one at The Summit, Wallasey on 20<sup>th</sup> July (S&JE).



Graham Connolly



73.324 **Crescent Dart** *Agrotis trux* (Hübner, [1824])  
One at Kingsley on 23<sup>rd</sup> July (PM). Apart from the record from Upton, Chester in 2020, the four other Cheshire records stretch from 1990 back to 1917.

Paul Miller





73.331 **Barred Chestnut** *Diarsia dahlia* (Hübner, [1813])  
One at Midgley Lane, Wildboarclough on 6<sup>th</sup> August, another at the same site on 11<sup>th</sup> August (A&JB) and three at Kennel Wood, Lyme Park on 25<sup>th</sup> August (AHa).

*Alison & Julian Borrow*



73.337 **White-marked** *Cerastis leucographa* ([Denis & Schiffermüller], 1775)  
One at Meadowside, Burwardsley on 22<sup>nd</sup> March (MRW). The third Cheshire record, after two in Alsager and in Willaston, Nantwich in 2018.

*Mike Whiteside*

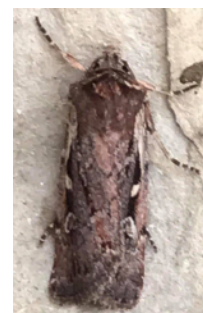
73.351 **Double Dart** *Graphiphora augur* (Fabricius, 1775)  
At the same site - Coole Fishery, near Audlem - one on 27<sup>th</sup> June (PG) and again on 10<sup>th</sup> July and on 13<sup>th</sup> July (PFA). Also, one at Circular Drive, Greasby on 8<sup>th</sup> July (L&MH).

73.355 **Neglected Rustic** *Xestia castanea* (Esper, 1798)  
A larva off heather at Taxal Moor on 4<sup>th</sup> April (SHH, AS) and an adult moth at Acre Lane, Cheadle Hulme on 5<sup>th</sup> September (DBo).



*Dave Booth*

73.356 **Heath Rustic** *Xestia agathina* (Duponchel, 1827)  
One at Midgley Lane, Wildboarclough on 29<sup>th</sup> August (A&JB, JO), one at Arden House, Duckington on 1<sup>st</sup> September (FMcC), one at Marbury Country Park on 6<sup>th</sup> September (DJ) and one at Linley Lane, Alsager on 7<sup>th</sup> September (MD).



*Fraser McConnell*

Records of some species did not meet the criteria for inclusion in the previous section, but are worthy of further comment. Some of these are mentioned below.

Recorded seven times in 2021, 73.085 **Marbled Green** *Nyctobrya muralis* appeared at New Brighton and at Wallasey. There is only one other record of the species: two specimens on a wall at Chester in 1899.

In three years, the number of Cheshire records of 65.003 **Barred Hook-tip** *Watsonalla cultraria* has almost doubled. The seven records in 2021 were all in the east of the county.

Nine of the year's ten records of 73.059 **Toadflax Brocade** *Calophasia lunula* were in the area around Crewe and Nantwich, but a specimen was also observed in September in Ellesmere Port.

First recorded in Cheshire in 2006, at Alsager, 70.055 **Large Twin-spot Carpet** *Xanthorhoe quadrifasiata* was sighted nine times in 2021, from Burwardsley to Marple, taking the total number of records in Cheshire to 41.

There had been only fourteen records in Cheshire of 72.010 **Black Arches** *Lymantria monacha* up to 2019, since when the total has reached 44, predominantly from the south and west of the county.

The number of Cheshire records of 70.264 **Satin Beauty** *Deileptenia ribeata* went up by over 18 per cent, five of the seven records in 2021 coming from Alsager. After a gap of two years, 2021 brought a similar percentage increase in the total number of records of 70.110 **Small Autumnal Moth** *Epirrita filigrammaria*, all from its stronghold of the eastern hills.

Also apparently thriving is 72.049 **Orange Footman** *Eilema sororcula*, the ten records in 2021 taking the total for Cheshire to 52. Recorded eight times, not only around the Northwich flashes, but also at Ellesmere Port and Thurstaston, was the 52.014 **Six-belted Clearwing** *Bembecia ichneumoniformis*, of which there are now 58 Cheshire records.

Two records are conspicuous among the thirteen in 2021 of 70.104 **Devon Carpet** *Lampropteryx otregiata*: the observations at Burton Mere Wetlands and at Wybunbury are the only ones away from the more usual stamping ground of Wildboarclough, Lyme Park and Higher Poynton. The Cheshire total now stands at 62.

Of the 65 Cheshire records of 70.036 **Maiden's Blush** *Cyclophora punctaria*, 38 were dated between the 1800's and 1973; the majority were from Delamere Forest. Fifteen new records have been added in the last two years. The nine in 2021 were distributed widely throughout the county.

The record in 2018 at Bromborough of 49.237 *Epinotia signatana* was the first since 1887, but five more records have been added for 2021. The year's five records of 16.019 *Paraswammerdamia albicapitella* have doubled the total for Cheshire. Following six records in 2020 of 63.048 *Palpita vitrealis*, four more observations of the species in 2021 boosted its Cheshire total to fifteen.



### Migrant Species in 2021

The following table shows the species of migrant moths that were recorded in Cheshire in 2021. A comparison with the list from 2020 shows that Clifden Nonpareil, Gem and *Metalampra italica* were new, but there was no sign in 2021 of Convolvulus Hawk-moth, Death's Head Hawk-moth, Beautiful Marbled, Scarce Bordered Straw or Blossom Underwing.

ABH	Common Name	Taxon	Records	Moths	Earliest Date	Latest Date
18.001	Diamond-back Moth	<i>Plutella xylostearna</i>	157	220	30-Mar	27-Oct
28.008	-	<i>Metalampra italica</i>	3	3	17-Jul	8-Sep
63.031	Rusty-dot Pearl	<i>Udea ferrugalis</i>	11	11	29-Jul	18-Nov
63.046	-	<i>Duponchelia fovealis</i>	1	1	25-Oct	25-Oct
63.048	-	<i>Palpita vitrealis</i>	4	4	21-Jul	9-Nov
63.052	Rush Veneer	<i>Nomophila noctuella</i>	9	12	13-Jun	28-Aug
69.010	Humming-bird Hawk-moth	<i>Macroglossum stellatarum</i>	7	7	24-Jun	31-Dec
70.038	Vestal	<i>Rhodometra sacraria</i>	1	1	11-Sep	11-Sep
70.047	Gem	<i>Nycterosea obstipata</i>	1	1	11-Sep	11-Sep
72.076	Clifden Nonpareil	<i>Catocala fraxini</i>	1	1	24-Sep	24-Sep
73.015	Silver Y	<i>Autographa gamma</i>	837	1194	13-May	11-Nov
73.307	Pearly Underwing	<i>Peridroma saucia</i>	1	1	4-Sep	4-Sep
73.327	Dark Sword-grass	<i>Agrotis ipsilon</i>	41	42	30-Mar	6-Nov



*Metalampra italica*  
David Bedford

### Species new for their respective 10km squares in 2020

Here is a summary of the species that were new for their respective 10km squares in 2021. A further 460 new hectad records were added during 2021 (down from 552 in 2020).

For the second year in a row, the square with the biggest increase in new species was SJ39 (New Brighton and Liscard); 57 species were noted there in 2021 that had not previously been recorded in that square. Not much of VC58 falls into SK06 near Three Shires Head on the border with Derbyshire and Staffordshire, but 42 new species were attributed to Cheshire in that square in 2021.



Some of the squares are only partially in VC58 and although species may have been recorded in adjacent counties, they are new for our side of the boundary. The following are listed in the Agassiz, Beavan & Heckford taxonomic order for each 10km square.

### SJ27

Case-bearing Clothes Moth *Tinea pellionella*; Skin Moth *Monopis laevigella*; *Caloptilia betulicola*; Apple Ermine *Yponomeuta malinellus*; *Zelleria hepariella*; *Paraswammerdamia nebulella*; *Ypsolopha sylvella*; Leek Moth *Acrolepiopsis assectella*; *Argyresthia spinosella*; Apple Fruit Moth *Argyresthia conjugella*; Cherry Fruit Moth *Argyresthia pruniella*; *Crassa unitella*; *Batia lunaris*; *Anarsia innoxia*; *Athrips mouffetella*; *Exapate congelatella*; *Acleris laterana*; *Acleris sparsana*; Rhomboid Tortrix *Acleris rhombana*; *Bactra lancealana*; *Ancylis badiana*; *Epinotia nisella*; *Eucosma hohewartiana*; *Epiblema foenella*; *Cydia splendana*; *Pammene fasciana*; *Dioryctria simplicella*; *Acrobasis repandana*; Box-tree Moth *Cydalima perspectalis*; *Crambus lathonellus*; Brown China-mark *Elophila nymphaeata*; Yellow Horned *Achlya flavicornis*; Pine Carpet *Pennithera firmata*; Small Dotted Buff *Photedes minima*.

### SJ28

*Trifurcula immundella*; *Anania perlucidalis*.

### SJ29

Bird-cherry Ermine *Yponomeuta evonymella*; *Tachystola acroxantha*; *Lozotaeniodes formosana*; *Hypsopygia glaucinalis*; *Palpita vitrealis*; *Eudonia lacustrata*; Grey Arches *Polia nebulosa*.

### SJ36

Honeysuckle Moth *Ypsolopha dentella*; Hawthorn Moth *Scythropia crataegella*; *Tachystola acroxantha*; *Lozotaeniodes formosana*; Green Oak Tortrix *Tortrix viridana*; *Aleimma loeflingiana*; Garden Rose Tortrix *Acleris variegana*; *Cochylis atricapitana*; *Eudemis profundana*; Cherry Bark Tortrix *Enarmonia formosana*; *Ancylis achatana*; Bud Moth *Spilonota ocellana*; *Epinotia bilunana*; *Gypsonoma sociana*; Pine Shoot Moth *Rhyacionia buoliana*; Codling Moth *Cydia pomonella*; *Cydia splendana*; Lunar Hornet Moth *Sesia bembeciformis*; *Phycita roborella*; *Hypsopygia glaucinalis*; Box-tree Moth *Cydalima perspectalis*; *Eudonia lacustrata*; Chocolate-tip *Clostera curtula*; Round-winged Muslin *Thumatha senex*; Coronet *Craniophora ligustri*; Silky Wainscot *Chilodes maritima*.

### SJ37

*Eriocrania sangii*; *Ectoedemia heringella*; Orchard Ermine *Yponomeuta padella*; Willow Ermine *Yponomeuta rorrella*; *Agonopterix yeatiana*; *Coleophora albidella*; *Epinotia signatana*; *Eucosma tripoliana*; *Dichrorampha simpliciana*; *Cydia conicolana*; *Pyrausta despicata*; Scalloped Hook-tip *Falcaria lacertinaria*; Gem *Nycterosea obstipata*.

### SJ38

*Ectoedemia heringella*; *Nemapogon ruricolella*; *Triaxomasia caprimulgella*; *Niditinea striolella*; *Caloptilia falconipennella*; *Acrocercops brongniardella*; *Phyllocnistis citrella*; *Carpatolechia decorella*; *Batrachedra praeangusta*; *Mompha jurassicella*; *Grapholita lobarzewskii*; *Pammene giganteana*; *Pammene argyrana*; *Pammene suspectana*; Yellow-legged Clearwing *Synanthedon vespiformis*.

### SJ39

*Tinea trinotella*; *Paraswammerdamia nebulella*; *Ypsolopha ustella*; *Depressaria daucella*; *Batrachedra praeangusta*; *Elachista atricomella*; *Schreckensteinia festaliella*; Barred Fruit-tree Tortrix *Pandemis cerasana*; *Lozotaeniodes formosana*; *Aleimma loeflingiana*; *Acleris sparsana*; *Agapeta hamana*; *Piniphila bifasciana*; *Ancylis badiana*; *Epinotia signatana*; Nut Bud Moth *Epinotia tenerana*; *Epinotia ramella*; *Epinotia bilunana*; *Eucosma cana*; *Notocelia incarnatana*; *Notocelia trimaculana*; Pine Shoot Moth *Rhyacionia buoliana*; *Cydia ulicetana*; Lunar Hornet Moth *Sesia bembeciformis*; *Matilella fusca*; *Scoparia pyralella*; *Catoptria pinella*; *Catoptria falsella*; Brown China-mark *Elophila nymphaeata*; Small China-mark *Cataclysta lemnata*; Beautiful China-mark *Nymphula nitidulata*; Pebble Hook-tip *Drepana falcataria*; Single-dotted Wave *Idaea dimidiata*; Small Blood-vein *Scopula imitaria*; Blood-Vein *Timandra comae*; July Highflyer *Hydriomena furcata*; May Highflyer *Hydriomena impluviata*; Grey Pine Carpet *Thera obeliscata*; Phoenix *Eulithis prunata*; Dark Marbled Carpet *Dysstroma citrata*; V-Pug *Chlorochystis v-ata*; White-spotted Pug *Eupithecia tripunctaria*; Golden-rod Pug *Eupithecia virgaureata*; Tawny-barred Angle *Macaria liturata*; Dotted Border *Agriopis marginaria*; Engrailed *Ectropis crepuscularia*; Common Wave *Cabera exanthemata*; Chocolate-tip *Clostera curtula*; Scarce Footman *Eilema complana*; Knot Grass *Acronicta rumicis*; Shark *Cucullia umbratica*; Svensson's Copper Underwing *Amphipyra berbera*; Marbled Green *Nyctobrya muralis*; Deep-brown Dart *Aporophyla lutulenta*; Northern Drab *Orthosia opima*; Pearly Underwing *Peridroma saucia*; Purple Clay *Diarsia brunnea*.

### SJ44

Scarlet Tiger *Callimorpha dominula*.

### SJ45

*Opostega salaciella*; Bird-cherry Ermine *Yponomeuta evonymella*; Hawthorn Moth *Scythropia crataegella*; *Batia lunaris*; *Tachystola acroxantha*; *Bryotropha terrella*; *Teleiopsis diffinis*; *Exoteleia dodecella*; *Elachista canapennella*; *Blastobasis adustella*; Brown Plume *Stenoptilia pterodactyla*; *Epagoge grotiana*; *Lozotaeniodes formosana*; *Aleimma loeflingiana*; *Agapeta hamana*; *Aethes smeathmanniana*; *Celypha striana*; *Bactra*

*lancealana*; *Eucosma obumbratana*; *Eucosma cana*; Bee Moth *Aphomia sociella*; *Acrobasis advenella*; Meal Moth *Pyralis farinalis*; *Anania coronata*; *Udea prunalis*; Box-tree Moth *Cydalima perspectalis*; *Evergestis pallidata*; *Scoparia pyralella*; *Eudonia lacustrata*; Marbled Brown *Drymonia dodonaea*; Black Arches *Lymantria monacha*.

#### **SJ46**

*Zelleria hepariella*; *Coleophora lineolea*; *Cnephasia longana*; *Eupoecilia angustana*; *Endothenia marginana*; *Endothenia nigricostana*; *Epiblema cirsiana*; *Endotricha flammealis*; *Pyrausta despicata*; Scallop Shell *Rheumaptera undulata*; Haworth's Pug *Eupithecia haworthiata*; Cypress Pug *Eupithecia phoeniceata*; Brussels Lace *Cleorodes lichenaria*; Coronet *Craniophora ligustri*.

#### **SJ47**

*Mompha locupletella*; *Acleris ferrugana*; Willow Tortrix *Epinotia cruciana*; *Palpita vitrealis*; *Schoenobius gigantea*; Maiden's Blush *Cyclophora punctaria*; Lempke's Gold Spot *Plusia putnami*; Toadflax Brocade *Calophasia lunula*; Brown-veined Wainscot *Archanara dissoluta*.

#### **SJ54**

Scarlet Tiger *Callimorpha dominula*.

#### **SJ55**

*Opostega salaciella*; Cherry Fruit Moth *Argyresthia pruniella*; Hawthorn Moth *Scythropia crataegella*; *Anarsia spartiella*; *Mirificarma mulinella*; *Coleophora mayrella*; Carnation Tortrix *Cacoecimorpha pronubana*; *Acleris ferrugana*; *Aethes smeathmanniana*; *Hedya ochroleucana*; *Zeiraphera isertana*; *Eucosma campoliliana*; *Dichrorampha acuminatana*; Box-tree Moth *Cydalima perspectalis*; White-marked *Cerastis leucographa*.

#### **SJ56**

Large Twin-spot Carpet *Xanthorhoe quadrifasiata*.

#### **SJ57**

Willow Ermine *Yponomeuta rorrella*; Leek Moth *Acrolepiopsis assectella*; *Metalampra italica*; *Coleophora trifolii*; *Epinotia signatana*; *Evergestis pallidata*; Clifden Nonpareil *Catocala fraxini*; Crescent Dart *Agrotis trux*.

#### **SJ58**

Beautiful China-mark *Nymphula nitidulata*; Northern Winter Moth *Operophtera fagata*.

#### **SJ64**

*Cnephasia longana*; *Grapholita janthinana*; Ringed China-mark *Parapoynx stratiotata*; Satyr Pug *Eupithecia satyrata*; Barred Umber *Plagodis pulveraria*; Marbled White Spot *Deltote pygarga*.

#### **SJ65**

*Monopis crocicapitella*; *Phyllonorycter lantabella*; Willow Ermine *Yponomeuta rorrella*; *Agonopterix alstromeriana*; *Bryotropha senectella*; *Coleophora trifolii*; *Stathmopoda pedella*; *Aethes smeathmanniana*; *Notocelia rosaecolana*; *Cydia fagiglandana*; Plum Fruit Moth *Grapholita funebrana*; *Rhodophaea formosa*; Orange Footman *Eilema sororcula*.

#### **SJ66**

*Phyllonorycter platani*; *Orthotelia sparganella*; Leek Moth *Acrolepiopsis assectella*; *Argyresthia trifasciata*; *Lozotaeniodes formosana*; *Acleris hastiana*; *Eudemis profundana*; Figure of Eighty *Tethea ocularis*; Large Twin-spot Carpet *Xanthorhoe quadrifasiata*; Slender Pug *Eupithecia tenuiata*; Cypress Pug *Eupithecia phoeniceata*; Seraphim *Lobophora halterata*; Chocolate-tip *Clostera curtula*; Round-winged Muslin *Thumatha senex*; Scarce Footman *Eilema complana*; Lempke's Gold Spot *Plusia putnami*; Vine's Rustic *Hoplodrina ambigua*; Crescent *Helotropha leucostigma*; Webb's Wainscot *Globia sparganii*; Barred Sallow *Tiliacea aurago*; Deep-brown Dart *Aporophyla lutulenta*.

#### **SJ67**

*Pyrausta despicata*; Haworth's Pug *Eupithecia haworthiata*; Coronet *Craniophora ligustri*; Vine's Rustic *Hoplodrina ambigua*.

#### **SJ68**

*Phyllonorycter platani*; *Zelleria hepariella*; *Eupoecilia angustana*; *Dioryctria sylvestrella*; *Euzophera pinguis*; *Anania perlucidalis*; Bordered Beauty *Epione repandaria*; Round-winged Muslin *Thumatha senex*.

#### **SJ75**

*Phyllonorycter lantanella*; *Metalampra italica*; *Scoparia subfusca*; Maiden's Blush *Cyclophora punctaria*; Vine's Rustic *Hoplodrina ambigua*.

#### **SJ76**

Cyclamen Tortrix *Clepsia spectrana*; Scarlet Tiger *Callimorpha dominula*; Red Sword-grass *Xylena vetusta*.

#### **SJ77**

*Stigmella glutinosae*; *Triaxomera parasitella*; *Phyllonorycter lantanella*; *Agonopterix nervosa*; *Bryotropha domestica*; Variegated Golden Tortrix *Archips xylosteana*; *Exapate congelatella*; Lunar Hornet Moth *Sesia bembeciformis*; Box-tree Moth *Cydalima perspectalis*; *Eudonia angustea*; *Eudonia truncicolella*; *Calamotropha paludella*; Round-winged Muslin *Thumatha senex*; Vine's Rustic *Hoplodrina ambigua*; Pale Pinion *Lithophane socia*.

#### **SJ78**

Leek Moth *Acrolepiopsis assectella*; *Epiblema foenella*; *Acrobasis repandana*; *Anania fuscalis*; *Anania crocealis*; *Agriphila selasella*; *Catoptria margaritella*; Round-winged Muslin *Thumatha senex*; Vine's Rustic *Hoplodrina ambigua*.

#### **SJ79**

*Phyllonorycter lantanella*; Scarlet Tiger *Callimorpha dominula*; Beautiful Hook-tip *Laspeyria flexula*.

#### **SJ85**

*Caloptilia falconipennella*; *Argyresthia sorbiella*; *Psoricoptera gibbosella*; *Cochylimorpha straminea*; *Pammene giganteana*; Barred Hook-tip *Watsonalla cultraria*; Burnet Companion *Euclidia glyphica*; Obscure Wainscot *Leucania obsoleta*.

#### **SJ86**

Yarrow Plume *Gillmeria pallidactyla*; Leopard Moth *Zeuzera pyrina*; Box-tree Moth *Cydalima perspectalis*; Nutmeg *Anarta trifolii*.

#### **SJ87**

*Caloptilia robustella*; Willow Ermine *Yponomeuta rorrella*; *Argyresthia dilectella*; *Agonopterix ocellana*; *Eudonia pallida*; Round-winged Muslin *Thumatha senex*; Scarce Footman *Eilema complana*; Obscure Wainscot *Leucania obsoleta*;

#### **SJ88**

*Triaxomera fulvimitrella*; *Phyllonorycter lantanella*; Leek Moth *Acrolepiopsis assectella*; Pine Hawk-moth *Sphinx pinastri*; Feathered *Ranunculus Polymixis lichenea*.

#### **SJ89**

*Eriocrania sparrmannella*; *Stigmella atricapitella*; *Nematopogon swammerdamella*; *Narycia duplicella*; *Morphaga choragella*; *Bucculatrix nigricomella*; *Phyllonorycter cerasicolella*; *Phyllonorycter lantanella*; *Paraswammerdamia albicapitella*; *Acrolepia autumnitella*; *Argyresthia spinosella*; *Agonopterix ocellana*; *Hypatima rhomboidella*; *Coleophora serratella*; *Mompha langiella*; *Cochylis roseana*; *Apotomis turbidana*; *Celypha striana*; *Endothenia gentianaeana*; *Epiblema sticticana*; *Eudonia truncicolella*; *Agriphila latistria*; Bordered White *Bupalus piniaria*; Buff Footman *Eilema depressa*; Mullein *Cucullia verbasci*; Barred Sallow *Tiliacea aurago*; Small *Ranunculus Hecatera dysodea*; Southern Wainscot *Mythimna straminea*.

#### **SJ96**

Ash Bud Moth *Prays fraxinella*; *Mompha conturbatella*; *Pammene regiana*; Small China-mark *Cataclysta lemnata*.

#### **SJ97**

*Tinea trinotella*; *Zelleria hepariella*.

#### **SJ98**

*Depressaria sordidatella*; *Elachista alpinella*; *Cydia cosmophorana*; *Grapholita lobarzewskii*; Box-tree Moth *Cydalima perspectalis*; Beautiful China-mark *Nymphula nitidulata*; Dark Umber *Philereme transversata*; Maple Pug *Eupithecia inturbata*; Sycamore *Acrionicta aceris*; Vine's Rustic *Hoplodrina ambigua*; Obscure Wainscot *Leucania obsoleta*.

#### **SJ99**

*Nemophora cupriacella*; Pine Shoot Moth *Rhyacionia buoliana*; *Acrobasis repandana*; Box-tree Moth *Cydalima perspectalis*; Angle-striped Sallow *Enargia paleacea*.



**SK06**

*Eriocrania unimaculella*; *Eriocrania cicatricella*; *Stigmella microtheriella*; *Tinea semifulvella*; *Phyllonorycter harrisella*; *Phyllonorycter viminiella*; *Ypsolopha scabrella*; *Esperia sulphurella*; *Diurna lipsiella*; *Agonopterix ocellana*; *Monochroa cytisella*; *Coleophora paripennella*; *Elachista argentella*; Yarrow Plume *Gillmeria pallidactyla*; Wood Sage Plume *Capperia britanniodactylus*; Large Fruit-tree Tortrix *Archips podana*; *Cochylimorpha straminea*; *Eudemis profundana*; *Apotomis sauciana*; *Eucosma campoliliana*; Bramble Shoot Moth *Notocelia uddmanniana*; *Pyrausta despicata*; *Pyrausta purpuralis*; *Udea olivalis*; *Catoptria margaritella*; Beautiful China-mark *Nymphula nitidulata*; Oak Hook-tip *Watsonalla binaria*; Drinker *Euthrix potatoria*; Eyed Hawk-moth *Smerinthus ocellata*; Pine Hawk-moth *Sphinx pinastri*; July Belle *Scotopteryx luridata*; Red Carpet *Xanthorhoe decoloraria*; Shoulder Stripe *Earophila badiata*; Small Autumnal Moth *Epirrita filigrammaria*; Small Yellow Wave *Hydrelia flammeolaria*; White-spotted Pug *Eupithecia tripunctaria*; Tawny Speckled Pug *Eupithecia icterata*; September Thorn *Ennomos erosaria*; Marbled White Spot *Deltote pygarga*; Mottled Rustic *Caradrina morpheus*; Bird's Wing *Dypterygia scabriuscula*; Golden-rod Brindle *Xylena solidaginis*.

**SK07**

*Hysterophora maculosana*; Latticed Heath *Chiasmia clathrata*.

**SK08**

*Ectoedemia argyropeza*; *Tinea trinotella*; *Ypsolopha parenthesesella*; *Ypsolopha sequella*; *Elachista argentella*; *Acleris emargana*; Box-tree Moth *Cydalima perspectalis*; Barred Hook-tip *Watsonalla cultraria*; Barred Yellow *Cidaria fulvata*; Vine's Rustic *Hoplodrina ambigua*; Haworth's Minor *Celaena haworthii*; Orange Sallow *Tiliacea citrigo*; Feathered Gothic *Tholera decimalis*; Broad-barred White *Hecatera bicolorata*.

**SK09**

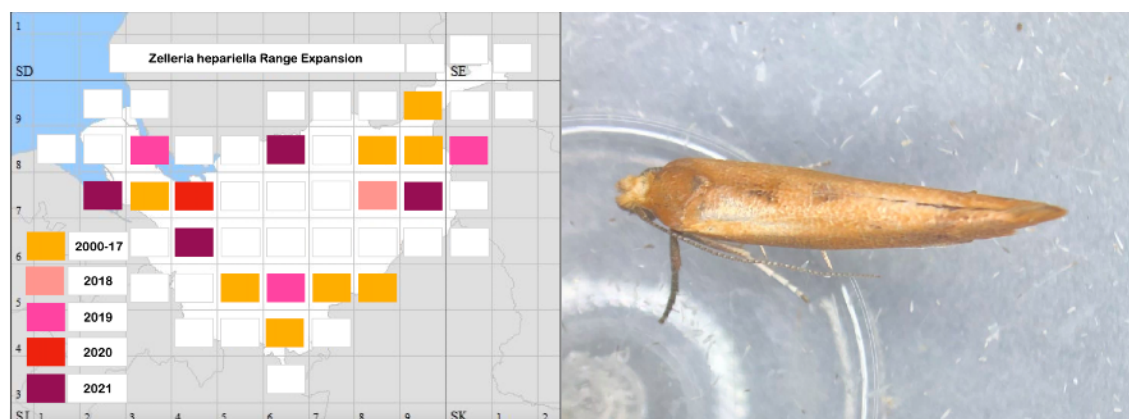
Lunar Hornet Moth *Sesia bembeciformis*; Autumn Green Carpet *Chloroclysta miata*; Mother Shipton *Euclidia mi*.

Eleven species were new to four or more hectads in 2021.

The apparent spread of some of these species across the county is illustrated in this set of maps. It is not easy to state whether it is indicative of a trend to wider geographical distribution or simply a consequence of increased recording.

**16.010 *Zelleria hepariella* (Stainton, 1849)**

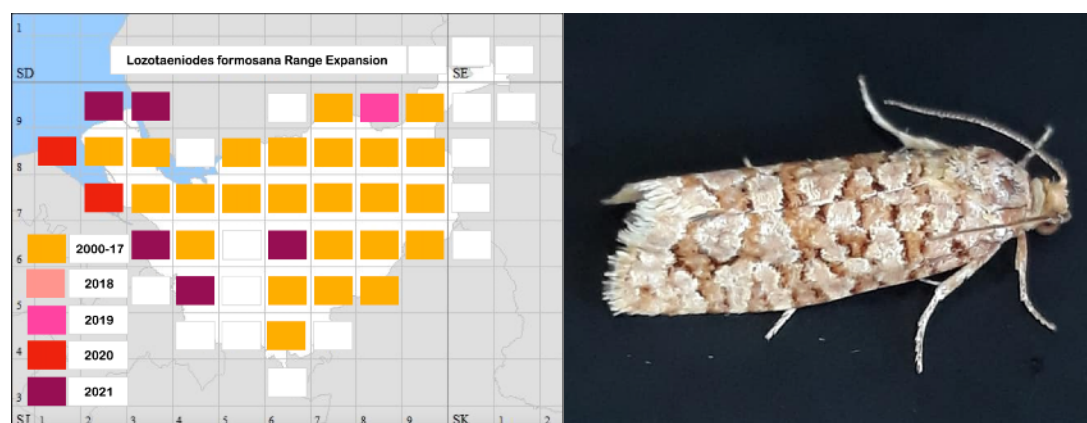
There have been 88 previous records in Cheshire, but the species was noted in Little Neston, Waverton, Warrington and Macclesfield for the first time in 2021.



Clive Washington

**49.040 *Lozotaeniodes formosana* (Frölich, 1830)**

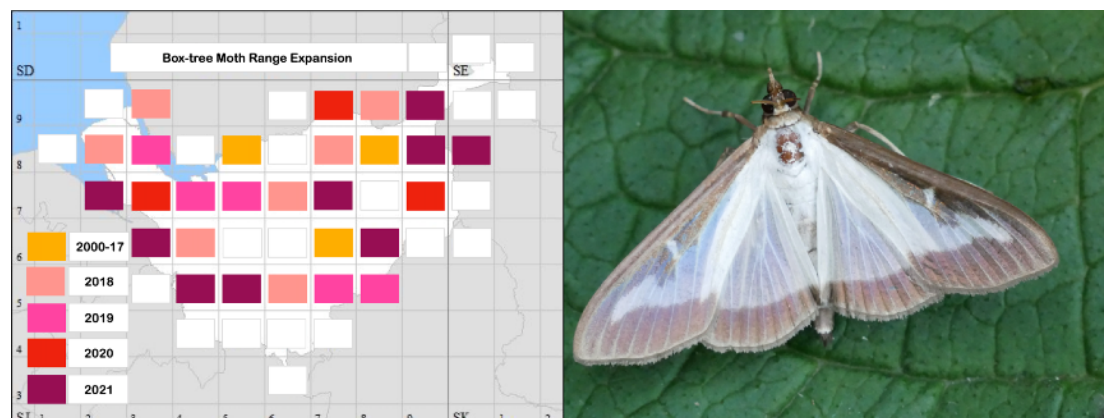
First recorded in the UK in Surrey in 1945, the species made its first appearance in the Cheshire records in 1994 at Prestbury and had spread to 23 further 10km squares by 2017. There was further expansion to the west in 2021, with records at Leasowe, Wallasey, Blacon (Chester) and Carden Park in the south west, as well as Wharton (near Winsford).



Tricia Wain

**63.054 Box-tree Moth *Cydalima perspectalis* (Walker, 1859)**

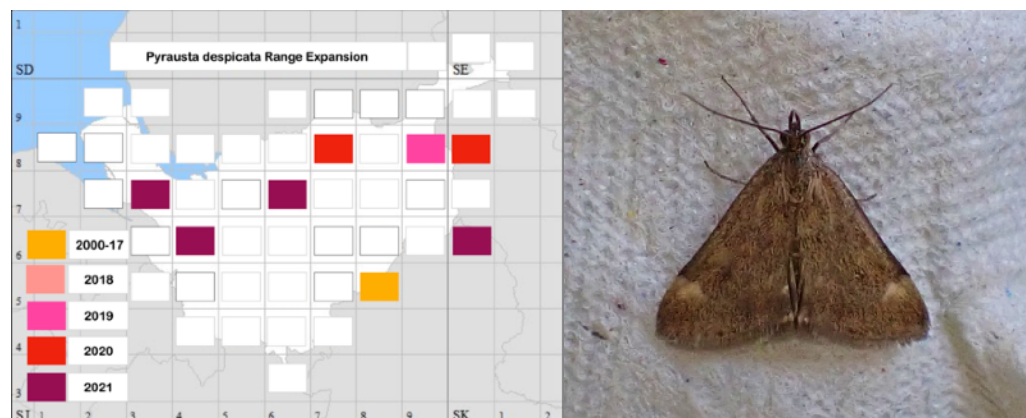
This species has progressed further to the south-west and to the north-east of the county.



Graham Jones

**63.005 *Pyrausta despicata* (Scopoli, 1763)**

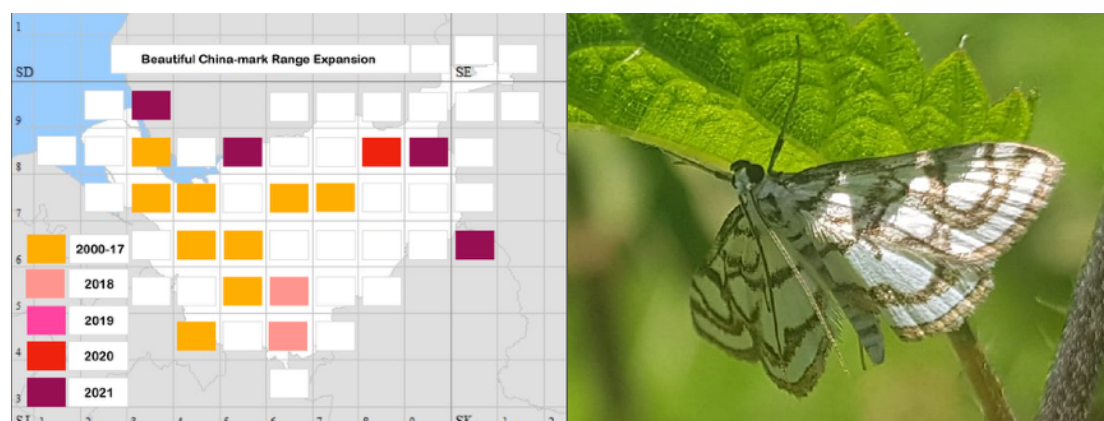
New in 2021 at Burton Mere, Tattenhall, Marbury Country Park and Wildboarclough.



Alison & Julian Borrow

**72.049 Beautiful China-mark *Nymphula nitidulata* (Hufnagel, 1767)**

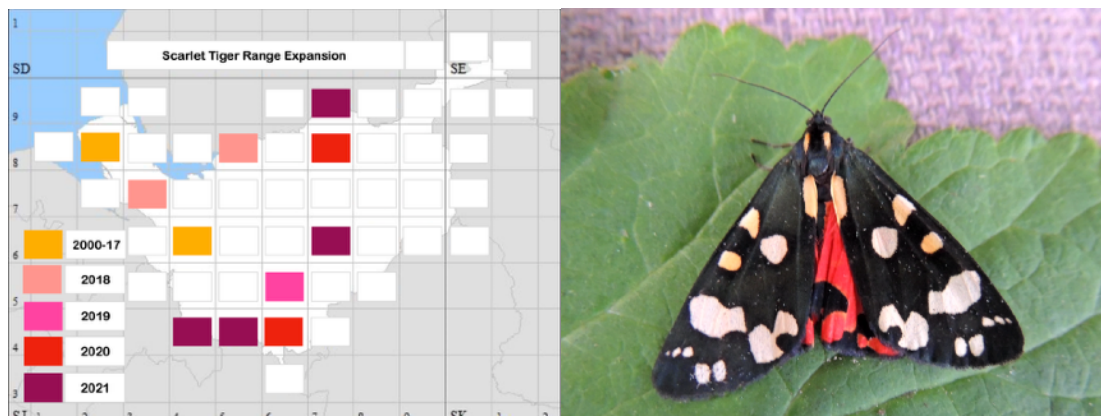
Among ten sightings in 2021 were those newly recorded at New Brighton, Norton Priory, Poynton and Wildboarclough. Another record at Leasowe was the first there since 1978.



Elina Doss

**72.029 Scarlet Tiger *Callimorpha dominula* (Linnaeus, 1758)**

New observations were made of this species in Elworth, Sale, Malpas and nearby Bradley.



*Pete Atherton*

**72.037 Round-winged Muslin *Thumatha senex* (Hübner, [1808])**

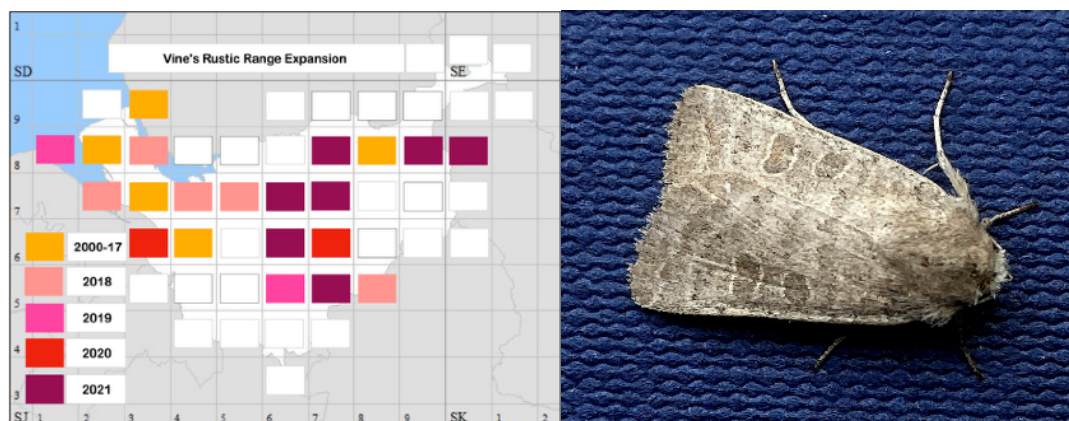
Spotted in 2021 in Blacon, Wharton (Winsford), Warrington, Lymm, Allostock, and Henbury.



*Kate Hughes*

**73.099 Vine's Rustic *Hoplodrina ambigua* ([Denis & Schiffermüller], 1775)**

Has reached the north-eastern border of the county.



*Paul Brewster*



## Cheshire Moth Recorders for 2021

C Rupert Adams, Chloe Aldridge, Stu Ames, Rebecca Ashworth, Peter F Atherton **PFA**, Ralph Atherton, Shane Atkinson **SA**, Dan Axford, Marion Barlow **MB**, Barry S Barnacal, Nigel Baskerville, Dave Bedford **DB**, Maile Keagle Belanger **MKB**, Steven Bell **SB**, Bill Bellamy, Mel Bellingham **MBe**, Roger Benson **RB**, Dave Bentley, Andy Bissitt **AB**, David Bissitt **DBi**, Fiona Bithell, Robert Bithell, Irene Blagden, Peter Boardman, Pete Bolton, Dave Booth **DBo**, Mike Boothman, Alison & Julian Borrow **A&JB**, Anthony Brandreth, Paul Brewster **PB**, Colin Brooks, Simon Browne, John P Bryan **JPB**, Sue D Budd, Emma Burgess, Peter Burton, Victoria J Burton, Sue Byron, Hugo Carlton-Jones, Alan Chadwick, Andrew Charlton, I Cheeseborough, Joe Chester, Helen & Bob Coan **H&BC**, Stephen P Collins, Richard Comont, Graham Connolly **GC**, David A Cookson, Ian Copley, Brian Cornelius, Kelly Corvus, David Costello, Sheila Coverdale **SC**, L Coward, Iona Cowell **IC**, Hannah Croft, Alex Cropper, Helen Cunn, Carly Curbishley, Mike Dale **MD**, Muriel H Dale **MHD**, Dean Davies **DD**, Harry Davies **HD**, Erin Dawber, J Dawson **JD**, Roger L H Dennis, Sean Dick **SD**, Leanna Dixon, Hannes Dobrat, Mike Dockery & Kevin McCabe, Steph Dolben, Clive Donaldson **CD**, Elina-Marielle Doss **ED**, Christine & John Dover, Martin Downes, Mark Dugmore, Brian Dyke, Nigel Earp **NE**, David W Edwards, Steve and Janine Edwards **S&JE**, Andrew Emmerson **AE**, Paul Field, Andrew Firth, Eric Fletcher, Keith Fowler, Rob Fowler, Stuart Fraser, Richard G Gabb, Keith Gallie, Esther Gibson, John Gilbody, Alan P Graham, David G Green **DGG**, Heather & Les Green, Morgan Green, Jane Herrell Grey, Lisa Grice, Gwyn Griffiths, Paul Griffiths **PG**, Martin Grimes, Kevin Hall, Les and Marian Hall **L&MH**, Tim & Elma Halliday, Sheelagh Halsey, Phil J Hampson **PJH**, A Handford **AHa**, Chris Hanley, Julia Harding, Grace C Hardy, Loren Hardy, Peter B Hardy, Sam Harley, Barbara Harris, Sheena Hatton, Claire Healey **CH**, Gary Hedges, Alida Heston **AH**, Jane E Hewitt **JEH**, Dave Higginson-Tranter **DH-T**, Paul Martin Hill **PMH**, Paul F Hillyer, Roy Hilton **RH**, Zac Hinchcliffe, Steve H Hind **SHH**, Elizabeth Hollinshead, Mike Holmes **MH**, Steve W Holmes **SWH**, Peter Hooper, Paul Hopkins **PH**, Kate Hughes **KH**, Anthony Hunter, Andy Ingham **AI**, Terry Instone, Toby James Irving, Philip Ish, Ann Islam, Darren D Jackson, John Jakeman **JJ**, Dave James **DJ**, Andrew Jennings-Giles, Mandy Jervis & Glyn Owen **MJ&GO**, Huw John **HJ**, Clive Jones **CJ**, Ed Spark Jones, Graham Jones **GJ**, Matthew Jones, Meriel Jones, Simon Jones, Jon M Kelly, Tom Kenwright, Jason King **JK**, David A Kitching, Debbie Knight, Simon Knight **SK**, Charles Knowles, Rosie Lacey, Emily Lake, Andrew Lamb, John Latham **JLa**, Andrew Law, Angela M Lidgett **AML**, Julie Lightfoot **JL**, Ted Lock **TL**, Helen Longmore, Roy Lowry, Karen Luckman, Alison Macchi, Fiona MacDougall, Jeanette & Dave Maddy **DJM**, John H Marchant, Susan Marley, Antony Marriott, Fraser McConnell **FMcC**, Shelley McDonald, Steve J McWilliam, Paul Miller **PM**, Colin S Millington, Jade Miner, Amanda Moore **AMo**, Gail Morgan, Paul Morris **PMo**, Jon Mortin, Anita Mulligan, Natasha Murwill, Alex Neal **AN**, Keith Neal, Zoey Nightingale, Robyn O'Reilly, Mark O'Sullivan, Paul Oldfield, J Oliver **JO**, Greg Osborn **GO**, Chris Overton, John Owen, Kevin Peace **KP**, Michael Pentland, Mike Perchard, Jane Platt, Toby Pritchard, Paul Quigley **PQ**, John W Rayner **JWR**, Andrew Read, Chris Reiki, Anne-Marie Richard **AMR**, Adrian Richards, Carla Richards, Stephen Richardson **SR**, Ian Roberts, David Robinson, Neil Robinson, Martin Rocke, John Rogers, Julie Rogers, Yvonne Rogers, Gemma Roome, Pat Rose, Paul Round **PR**, J Rowlands, Richard A Rowlandson, David P Rumley, Edwin Samuels, Colin Schofield **CS**, Angie Seymour **AS**, John P Shaughnessy **JPS**, Brandon Shaw, Chris Shaw, David J Shaw, Peter Shaw **PS**, Jan Sheppard, Jack Shutt, Carol Siddorn, Margaret Sixsmith, Dave R Skingsley, David Slade, Ben Smart **BS**, Diane Smith, Heather Smith, Peter Smith, Tony V Smith, Richard Speechley, Martyn Stanyer, Andrew Steele, Geraldine Stephenson, Josh Styles, Jack H Swan **JHS**, J Tatlow, Agnes Tavener, Dave Taylor **DT**, Joseph Taylor, Naomi Taylor, Amy Thomas, Charles Thompson, Elizabeth Thornton, David Tomlinson, E Topelian, Dave Trent **DTTr**, Jonathan Tugwood, Bill Underwood **BU**, Tricia Wain **TWa**, Jon Wainwright **JW**, David Walsh, Tim Ward **TW**, Clive Washington **CW**, Natalie Webb, Charles Whitaker, Derek Whiteley, Jenny Whiteside, Michael R Whiteside **MRW**, Roger Wilkinson **RW**.

## Acknowledgements

The author would like to thank everyone who submitted records and photographs to be included into this report.

Thanks also to all those who have helped with species identification and record verification through the year.