

CHESHIRE (VICE COUNTY 58)



MOTH REPORT FOR 2023



Ashworth's Rustic : Tim and Elma Halliday

Author: David Maddy

Date: May 2024

Introduction

How do you identify a moth species?

The more evidence of its characteristics you can find, the better the prospect of a confident ID. If you have a Field Guide, you can compare your moth with the excellent illustrations in turn, until you find a good match. To be more rigorous, you can read the text for the matched moth, to be sure that the characteristics, flight season, habitat and distribution are reasonable. You can compare with photos in books or on online galleries. You might even use an app!

In bygone days, rarities and collections were displayed at meetings of Entomological Societies. But if the Victorian recorder wanted to identify a moth, verbal descriptions, perhaps accompanied by a line drawing, would be the only option.

How would we get on, without the aid of illustrations and photos?

Try to determine this macro-moth: *“The darker outer central cross-line on forewing is fine, oblique and strongly kinked near leading edge, and forms a dot on each vein. In trailing half it is more or less straight, and is angled so that it converges with the central cross-line, the two in some cases meeting. On underside, forewing tip has a distinct pale square patch. Hindwing edge smooth or slightly scalloped, and on underside outer cross-line (when present) is angled centrally. Male antennae feathered, with feathering tapered and ending 2mm from tip. Varies from light grey-brown, sometimes variegated with yellowish brown, through plainer grey forms to blackish-grey, and dark markings vary in intensity and extent”¹.*

The answer is on page 47!

The above description highlights the numerous characteristics which could be considered when attempting to reach a unique conclusion. These attributes are often best worked through methodically, with the live moth in front of you. But if you are trying to determine a species from photographs, be sure to capture all of the distinguishing features. It is sometimes important to take photos of the moth (especially micro-moths) from a variety of angles, to be able to pick out the key properties. Please remember this when submitting photos as additional evidence of your records!

In this report:

- A list is provided, itemising all micro-moth species that were recorded three or fewer times during the year as well as all macro-moth species that were recorded five or fewer times.
- The area of VC58 covers at least a part of 49 “hectads” - grid-reference squares of 10km by 10km. A total of 568 species were recorded for the first time in their respective hectads in 2023. These are listed for each hectad, in turn.
- The increased range of nine species across the county is illustrated in a set of maps.
- Sixteen migrant species - those species that have flown or been transported by air-streams from origins outside of the British Isles - were recorded in 2023 in Cheshire and are tabulated.

¹ Field Guide to the Moths of Great Britain and Ireland Paul Waring & Martin Townsend
Illustrated by Richard Lewington

The table below shows the number of species and records in Cheshire over the decade from 2014 to 2023. The number of different species recorded rose to 1023 in 2023. The number of micro-moth species recorded in the county was up to 570, although the number of macro-moth species (453) showed a slight reduction compared to 2022.

The total number of records submitted in 2021 topped one hundred thousand for the first time, but in 2022 the total was even greater. The number for 2023 still has six figures; there was a drop in the number of records of macro-moths reported (73,374), but an increase in the number of micro-moth records (31,928).

Year	Species			Records		
	Micro's	Macro's	Total	Micro's	Macro's	Total
2014	515	409	924	23,508	53,853	77,361
2015	490	420	910	17,091	47,901	64,992
2016	519	411	930	21,411	44,543	65,954
2017	526	422	948	21,340	51,567	72,907
2018	543	427	970	24,623	54,755	79,378
2019	546	416	962	23,359	48,971	72,330
2020	561	434	995	26,817	64,682	91,499
2021	527	435	962	26,228	75,449	101,677
2022	552	460	1012	29,454	79,126	108,580
2023	570	453	1023	31,928	73,374	105,302

Macros in 2022, but not 2023.	Macros in 2023, but not 2022.
Lackey ; Death's-head Hawk-moth ; Bedstraw Hawk-moth ; Striped Hawk-moth ; Birch Mocha ; July Belle ; Red Carpet ; Pale November Moth ; Welsh Wave ; Barred Carpet ; Haworth's Pug ; Larch Pug ; Small Brindled Beauty ; Wood Tiger ; Bordered Sallow ; Bordered Straw ; Eastern Bordered Straw ; Small Mottled Willow ; Brown-veined Wainscot ; Webb's Wainscot ; Lesser-spotted Pinion ; Minor Shoulder-knot ; Deep-brown Dart ; Brindled Ochre ; Light Feathered Rustic.	Red-tipped Clearwing ; Pine Hawk-moth ; Least Carpet ; Small Argent & Sable ; Shaded Pug ; V-Moth ; Rannoch Looper ; Lobster Moth ; Gypsy Moth ; Four-dotted Footman ; Dewick's Plusia ; Butterbur ; Twin-spotted Wainscot ; Crescent Striped ; Marbled Coronet ; Delicate ; Shore Wainscot ; White-marked ; Ashworth's Rustic.

Twenty-five species of macro-moth that were recorded in 2022 did not appear again in 2023. Conversely, nineteen species are on the lists for 2023 that were not seen in Cheshire in 2022.

Weather Summary for 2023

January continued the conditions at the end of the previous year, with temperatures above the norm for the season, a fair amount of rain and strong westerly winds. There was some snow in the middle of the month, but the generally mild and dry theme persisted through February.

The weather turned colder as Arctic air dominated in early March. Then, ending a brief cold snap, overnight temperatures alternated wildly; from freezing to 10 degrees Celsius and back to freezing again. Meteorologists described the entire month, by its end, as “soggy”.

Intermittent rain and high winds characterised the first half of April, with temperatures often below the norm for the time of year. After a few warm days of respite, brisk easterly winds brought further rain.

May started with mixed weather: sunshine, showers and some pulses of heavy rain. Sunshine persisted to the end of the month, but temperatures were slightly below the average of recent years.

The dry weather continued, but it was not until the second week of June that some real heat kicked in. The month concluded with a few pulses of rain, but nationally it was the hottest June on record.

Frequent showers, of varying intensity, cooled the first week of July, before a number of thunderstorms washed over the county. With the jet stream caught in a blocking pattern, the UK (in contrast to southern continental Europe) was stuck under low pressure, leading to cool, wet weather for the rest of the month.

Some heavy rain and intermittent sunshine continued the trend for August, but September opened with a week-long heatwave. This gave way to wet and windy weather by the middle of the month, although overnight temperatures held up. It remained warm overnight through October and the mild weather continued into November. By the end of that month, however, a combination of long nights, clear skies and no wind kept a cold spell in place. Progressing through December, we experienced mixed, but mild, conditions, with only a brief nip of frost. The year ended rainy and blustery, but warm for December

In contrast to the two previous years, June (rather than July) was the month in which the highest number of different species was recorded by light trapping. The 611 different species trapped in June 2023 exceeds the 540 species in June 2022, but fell short of the 625 species recorded in July 2022.

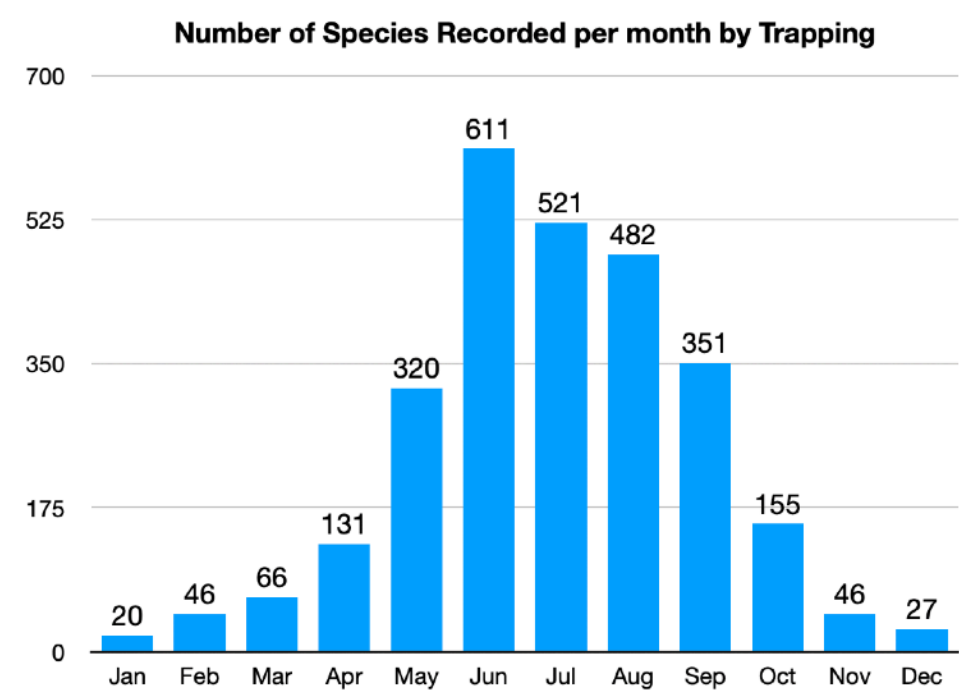


Figure 1: Graph, showing the number of species trapped per month in 2023.

Least-recorded Species in 2023

As always, time and effort dictate that this report cannot be a complete analysis of the year's records; it does however itemise all micro-moth species that were recorded three or fewer times during the year as well as all macro-moth species that were recorded five or fewer times.

Throughout what follows, header information relating to each species appears thus:

3.004 Gold Swift *Hepialus hecta* (Linnaeus, 1758)

Which, reading left to right detail:

- Agassiz, Beavan & Heckford species number
- Species' vernacular name
- Species' taxonomic name
- Species' Author(s)

2.004 *Eriocrania sparrmannella* (Bosc, 1791)

Two mines, on birch, at Reddish Vale on 8th June, and another four (with at least one tenanted) at Werneth Brook, Hyde on 22nd June (SHH).

2.006 *Eriocrania cicatricella* (Zetterstedt, 1839)

Mines, on birch, at Danes Moss on 9th May (SHH).

4.002 *Stigmella lapponica* (Wocke, 1862)

A mine, on birch, at Greenway Bridge, and two more at Wildboarclough, on 26th July (SHH).

4.020 *Stigmella paradoxa* (Frey, 1858)

A mine, on hawthorn, at Bosley on 6th July, and others at Wildboarclough on 26th July (SHH).

4.036 *Stigmella myrtillella* (Stainton, 1857)

A mine, on bilberry, at Greenway Bridge on 26th July, and another on the roadside at Wincle on 16th August (SHH).

4.040 *Stigmella assimilella* (Zeller, 1848)

Mines, on aspen, at Burton Marsh on 26th August (HJ).

4.041 *Stigmella sorbi* (Stainton, 1861)

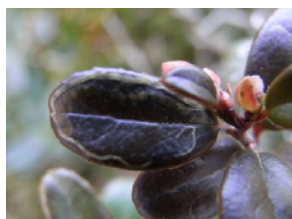
Mines, on rowan, at Greenway Bridge and at Wildboarclough on 26th July (SHH).

4.061 *Stigmella atricapitella* (Haworth, 1828)

Two mines on Sessile Oak, at Hurst Clough on 7th July (SHH) and another, at Danes Moss on 11th November (SHH, TW).

4.075 *Etainia louisella* (Sircom, 1849)

Mines on field maple seed at Ellesmere Port on 6th July (HJ). This is only the ninth record of this species in Cheshire since it was first recorded in 2011.



4.077 *Fomoria weaveri* (Stainton, 1855)

A mine, on cowberry, at Goyt Valley on 8th April (SHH).

Steve Hind

4.100 *Ectoedemia minimella* (Zetterstedt, 1839)

Mines, on birch: one at Tidnock Wood on 8th August; two (one vacated, one tenanted), at Wincle, on 16th August and two at Swettenham on 28th October (SHH).

6.005 *Heliozela hammoniella* (Sorhagen, 1885)

A mine, on seedling birch, at Tidnock Wood on 8th August (SHH).

8.001 *Incurvaria pectinea* (Haworth, 1828)

Larval feeding signs, on birch, at Tidnock Wood on 8th August, and on hazel, at Ravensmoor on 16th September (SHH).

8.003 *Incurvaria oehlmanniella* (Hübner, 1796)

One at Peckforton Hill on 27th June (MRW).

11.002 *Narycia duplicella* (Goeze, 1783)

A larval case, on *Lepraria* on a tree trunk, at Northenden Road, Sale on 28th November (BS)

11.006 *Taleporia tubulosa* (Retzius, 1783)

A case at Big Wood, Withington on 27th March (SHH).



12.011 *Triaxomera fulvimitrella* (Sodoffsky, 1830)
Two, to a CUL lure, on 27th May, and another on 10th June, at Kent Close, Bromborough (PH). One at Greasley Hollow on 16th June (SHH).

Paul Hopkins

12.012 *Triaxomera parasitella* (Hübner, 1796)

One on 23rd May and one on 3rd June at Old Hall Gardens, Hoole (CB) and one on 5th June at Bayswater Road, Wallasey (CS).

12.014 *Nemaxera betulinella* (Paykull, 1785)

One at Tidnock Wood on 8th August (SHH).

12.026 **Common Clothes Moth** *Tineola bisselliella* (Hummel, 1823)

One at Ernley Close, Nantwich on 24th March (MHe), one on 16th July and another on 10th August, at Wellington Close, Ellesmere Port (HJ).



12.039 *Monopis crocicapitella* (Clemens, 1859)

One at Vernon Avenue, Wallasey on 6th September (TWa). This is only the sixth record of the species in Cheshire, five of which have been in the last three years.

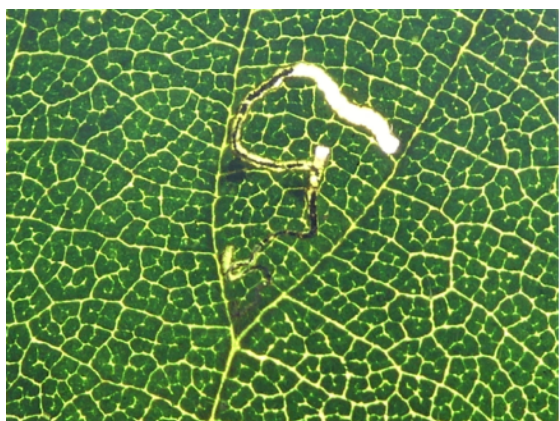
Tricia Wain

13.002 *Roeslerstammia erxlebelli* (Fabricius, 1787)

One at Dane Road, Sale on 24th June (JPS), one at Linley Lane, Alsager on 18th August (MD) and a mine, on lime, at Dukinfield on 15th October (SHH).

14.002 *Bucculatrix nigricomella* (Zeller, 1839)

One at Carleton Road, Higher Poynton on 23rd June (SHH), one at Knowle Close, Great Sutton on 4th Sep (MBE) and one at Thornton Avenue, Higher Bebington on 9th September (CD).



14.007 *Bucculatrix albedinella* (Zeller, 1839)

A mine at Quarry Lane, Waverton on 13th August (HC). This species has only been recorded twice before in Cheshire. A mine was recorded at the same site in 2020.

Helen Coan

14.012 *Bucculatrix bechsteinella* (Bechstein & Scharfenberg, 1805)

Mines, on hawthorn, at Neston on 6th October (HJ).

15.008 *Caloptilia alchimiella* (Scopoli, 1763)

One, off oak, at Greasley Hollow on 16th June (SHH) and one at Hightree Drive, Henbury on 12th August (TW).

15.009 *Caloptilia robustella* (Jäckh, 1972)

One at Common Lane, Waverton on 6th September (HC).



15.011 *Caloptilia falconipennella* (Hübner, [1813])
One at Kingsley on 9th April (PM) and a mine, on alder, at the Redbrook Wildlife Trail, Partington on 10th October (SHH). This species had only been recorded in Cheshire six times previously; the first record was as recent as 2021.

Paul Miller

15.012 *Caloptilia semifascia* (Haworth, 1828)
One at Linley Lane, Alsager on 11th September (MD). This is only the second record of this species in Cheshire. The first was in 2022.

15.0131 *Caloptilia honoratella* (Rebel, 1914)
One at Linley Lane, Alsager on 8th October (MD). A NEW COUNTY RECORD.

15.017 *Calybites phasianipennella* (Hübner, [1813])
One at Bayswater Road, Wallasey on 10th September (CS).

15.033 *Parornix torquillella* (Zeller, 1850)
A mine, on blackthorn, at Knolls Green on 4th August (SHH).

15.046 *Phyllonorycter blancardella* (Fabricius, 1781)
Two mines, ex-apple, at Swettenham on 28th October (SHH). These emerged indoors, on 15th and 20th March 2024.

15.047 *Phyllonorycter hostis* (Triberti, 2007)
One at Common Lane, Waverton on 16th June (HC). This is the eighth record in Cheshire.

15.048 *Phyllonorycter junoniella* (Zeller, 1846)
A mine, on cowberry, at Goyt Valley on 8th April (SHH).

15.054 *Phyllonorycter viminiella* (Sircom, 1848)
One, off sallow, at Cooke's Lane, Rudheath on 27th April (SHH), one at Danes Moss on 20th May (AE) and a mine, ex-sallow, at Danes Moss on 11th November (SHH), which emerged indoors on 24th March 2024.

15.057 *Phyllonorycter dubitella* (Herrich-Schäffer, 1855)
A mine, on Goat Willow, at Swettenham on 28th October (SHH). It emerged indoors on 22nd March 2024. This is the tenth record of this species in Cheshire, which was first recorded in the county in 2013.

15.058 *Phyllonorycter hilaella* (Zetterstedt, 1839)
One at Carleton Road, Higher Poynton on 3rd August (SHH) and one at Danes Moss on 19th August (SBr, AE, RH, SHH).

15.066 *Phyllonorycter strigulatella* (Zeller, 1846)
Three mines at Dukinfield on 15th October (SHH) and another mine at Danes Moss on 15th October (AE). All on Grey Alder.

15.080 *Phyllonorycter froelichiella* (Zeller, 1839)

Four, off alder, at Danes Moss on 6th June (SHH) and a larva, on alder, at Redesmere on 7th October (TW).

15.082 *Phyllonorycter klemannella* (Fabricius, 1781)

One at Meadowside, Burwardsley on 23rd June (MRW), mines, on alder, at Woodchurch on 29th October (HJ) and a mine on a fallen alder leaf at Danes Moss on 11th November (SHH, TW).



15.083 *Phyllonorycter trifasciella* (Haworth, 1828)

A mine, on honeysuckle, at Big Wood, Withington on 27th March, an adult at Carleton Road, Higher Poynton on 16th June (SHH) and mines, on snowberry, at Little Neston on 12th October (HJ).

Steve Hind

16.003 **Apple Ermine** *Yponomeuta malinellus* (Zeller, 1838)

Several adult moths, seen on an apple tree, at Burton Marsh on 25th June (HJ).

16.004 **Spindle Ermine** *Yponomeuta cagnagella* (Hübner, [1813])

Larvae and webs, on spindle, at Brookledge Lane, Adlington on 14th June (SHH) and four larvae at Holly Court, Helsby on 15th June (MJ&GO).

17.013 *Ypsolopha vittella* (Linnaeus, 1758)

One at Thornton Avenue, Higher Bebington on 10th August (CD).

17.015 *Ochsenheimeria urella* (Fischer von Röslerstamm, 1842)

One at Wincle on 16th August (SHH).

20.014 *Argyresthia sorbiella* (Treitschke, 1833)

One at Linley Lane, Alsager on 10th June (MD).

20.015 *Argyresthia curvella* (Linnaeus, 1761)

One at Dane Road, Sale on 10th June (JPS).

20.018 *Argyresthia spinosella* (Stainton, 1849)

One at Marthall Lane, Ollerton on 26th May (CJC) and another at Red Pike, Little Sutton on 10th June (ACo).

20.024 *Argyresthia semitestacella* (Curtis, 1833)

One at Linley Lane, Alsager on 7th September (MD) and one at Carleton Road, Higher Poynton on 16th September (SHH).

24.001 *Bedellia somnulentella* (Zeller, 1847)

A mine, on bindweed, at Middlewood Road, Poynton on 7th August (SHH).



28.008 *Metalampra italica* (Baldizzzone, 1977)
One at Weston Grove, Upton, Chester on 9th September (RW). The species had been recorded on only nine previous occasions in Cheshire.

Roger Wilkinson

29.002 *Diurnea lipsiella* ([Denis & Schiffermüller], 1775)
One at Midgley Lane, Wildboarclough on 19th October (A&JB).

32.010 *Agonopterix conterminella* (Zeller, 1839)
One at Dane Road, Sale on 6th July (JPS), another, in wet woodland below Walkerwood dam, at Walkerwood Reservoir, Stalybridge on 14th July (DW) and one at Danes Moss on 19th August (SBr, AE, RH, SHH).

32.011 *Agonopterix scopariella* (Heinemann, 1870)
One on 18th February and another on 16th April, both at Linley Lane, Alsager (MD).

32.015 *Agonopterix subpropinquella* (Stainton, 1849)
One at Holly Court, Helsby on 5th September (MJ&GO).

32.019 *Agonopterix ciliella* (Stainton, 1849)
One on 8th October and one on 27th October at Midgley Lane, Wildboarclough (A&JB).

32.029 *Agonopterix umbellana* (Fabricius, 1794)
One at Midgley Lane, Wildboarclough on 17th March (A&JB).

32.032 *Agonopterix angelicella* (Hübner, [1813])
A larva at Danes Moss on 20th May (AE).

35.011 *Anacamptis populella* (Clerck, 1759)
One at Danes Moss on 19th August (SBr, AE, RH, SHH).

35.012 *Anacamptis blattariella* (Hübner, 1796)
One at Danes Moss on 19th August (SBr, AE, RH, SHH).

35.0191 *Anarsia innoxia* (Gegersen & Karsholt, 2017)
One at Shannon Close, Willaston, Nantwich on 23rd June (DT). This is only the second record of this species in Cheshire. The first was in 2021.

35.020 *Anarsia spartiella* (Schrank, 1802)
One at Stiles Avenue, Marple on 20th June (MS) and one at Midgley Lane, Wildboarclough on 7th July (A&JB).

35.036 *Chrysoesthia sexguttella* (Thunberg, 1794)
Several mines on the roadside below Swanscoe Hall at Higher Hurdsfield on 24th July and a few more mines, on orche, at Wallerscote Road, Weaverham on 2nd September (SHH).

35.039 *Bryotropha politella* (Stainton, 1851)
Three at Bakestonedale Moor on 24th June (SHH).



35.065 *Monochroa cytisella* (Curtis, 1837)
One at Midgley Lane, Wildboarclough on 5th July (A&JB). This is only the ninth record of this species in Cheshire since it was first recorded in the county in 2010.

Julian Borrow

35.066 *Monochroa tenebrella* (Hübner, [1817])
One male at Danes Moss (where there was plenty of common sorrel) on 6th June (SHH) and another male at Midgley Lane, Wildboarclough on 17th June (A&JB).

35.071 *Monochroa lucidella* (Stephens, 1834)
One at Meadowside, Burwardsley on 24th June (MRW), another three on the same day at Common Lane, Waverton (HC) and one at Shannon Close, Willaston, Nantwich on 25th June (DT). There had been only eight previous records of this species in Cheshire.

35.085 *Athrips mouffetella* (Linnaeus, 1758)
One at Meadowside, Burwardsley on 26th June (MRW).

35.093 *Mirificarma mulinella* (Zeller, 1839)
One at Bayswater Road, Wallasey on 12th July (CS) and one at Holly Court, Helsby on 14th July (MJ&GO). Also, two (one off gorse, one from a roadside hedge) at Winle on 16th August (SHH).



35.101 *Gelechia sororculella* (Hübner, [1817])
One at Holly Court, Helsby on 24th June (MJ&GO) and another on the same day at Dane Road, Sale (JPS).

John P Shaughnessy



35.105 *Gelechia nigra* (Haworth, 1828)
One at Deansfield Way, Elton on 25th June (SWH). A NEW COUNTY RECORD.

Steve Holmes

35.115 *Scrobipalpa nitentella* (Fuchs, 1902)
One at Wellington Close, Ellesmere Port on 14th June (HJ). This species had only been recorded on three previous occasions in Cheshire. This is the first adult record.

35.118 **Beet Moth** *Scrobipalpa ocellatella* (Boyd, 1858)
One at Danes Moss on 19th August (SBr, AE, RH, SHH).

35.146 *Teleiopsis diffinis* (Haworth, 1828)
One at Bayswater Road, Wallasey on 18th May and another there on 8th August (CS) and one at Midgley Lane, Wildboarclough on 16th June (A&JB).

35.151 *Carpatolechia proximella* (Hübner, 1796)
Two at Wybunbury Moss on 30th May (BB).

36.0019 *Batrachedra confusella* (Berggren, Aarvik, Huemer, Lee & Mutanen, 2022)
One at Shannon Close, Willaston, Nantwich on 21st June (DT), one at Linley Lane, Alsager on 30th June and another there, a male, on 7th July (MD).

37.005 *Coleophora lutipennella* (Zeller, 1838)
A larva, on oak, at Knolls Green on 26th May (SHH). The adult emerged indoors on 19th June. One at Linley Lane, Alsager on 7th July (MD) and another at Knowle Close, Great Sutton on 11th July (MBe).

37.014 *Coleophora coracipennella* (Hübner, 1796)

A larva, on hawthorn, at Lostock Green on 21st May. It emerged indoors on 11th June. Another at Bosley on 6th July (SHH).

37.024 *Coleophora vitisella* (Gregson, 1856)

Twenty-one larvae, on cowberry, in the Goyt Valley on 8th April (SHH). and three larvae at Bosley Cloud on 28th October (AE).

37.028 *Coleophora juncicolella* (Stainton, 1851)

Larvae, swept from heather at Goyt Valley on 8th April and at Stake Side, Goyt Valley on the same day (SHH).

37.029 *Coleophora orbitella* Zeller, 1849

Two at Linley Lane, Alsager on 30th June (MD).

37.033 *Coleophora trifolii* (Curtis, 1832)

One at Dane Road, Sale on 11th June (JPS).

37.035 **Clover Case-bearer** *Coleophora alcyonipennella* (Kollar, 1832)

One at Midgley Lane, Wildboarclough on 6th September (A&JB). This species had been recorded on only four previous occasions in Cheshire, the first time in 2018.

37.049 **Pistol Case-bearer** *Coleophora anatipennella* (Hübner, 1796)

A larval case on 15th June and larval feeding evidence on 27th June (SWH) both at Gowy Meadows CWT. An adult at Meadowside, Burwardsley on 19th June (MRW).

37.050 *Coleophora albidella* ([Denis & Schiffermüller], 1775)

One at Meadowside, Burwardsley on 19th June (MRW).

37.053 *Coleophora betulella* (Heinemann, [1876])

One at Carleton Road, Higher Poynton on 16th June (SHH).

37.066 **Larch Case-bearer** *Coleophora laricella* (Hübner, [1817])

A larva, on larch, at Macclesfield on 25th April (SHH). Also, an adult at Linley Lane, Alsager on 9th June and two there on 10th June (MD).

37.071 *Coleophora glaucicolella* (Wood, 1892)

One at Carleton Road, Higher Poynton on 19th June (SHH) and one at Hightree Drive, Henbury on 22nd June (TW).

37.083 *Coleophora saxicolella* (Duponchel, [1843])

One at Midgley Lane, Wildboarclough on 23rd June (A&JB) and one, netted above its foodplant which was common on the roadside by Swanscoe Hall, at Higher Hurdsfield on 24th July.

37.099 *Coleophora striatipennella* (Nylander [1848])

One at Midgley Lane, Wildboarclough on 10th June (A&JB).

37.102 *Coleophora argentula* (Stephens, 1834)

Cases, on yarrow, at Frodsham Marsh on 25th September, at Little Neston on 6th October and at Noctorum on 10th October (HJ).

38.032 *Elachista apicipunctella* (Stainton, 1849)

One at Bayswater Road, Wallasey on 5th June (CS).



39.006 *Chrysoclista lathamella* (Fletcher, 1936)
One at Rosthernmere Road, Cheadle Hulme on 21st June (RC). A NEW COUNTY RECORD.

Roger Cope

40.001 *Mompha conturbatella* (Hübner, [1819])
Larvae, on rosebay, at Danes Moss on 17th May, at Dane Valley, Danebridge on 25th May, and at Wincle, also on 25th May (SHH).

40.003 *Mompha lacteella* (Stephens, 1834)
One on 23rd June and two on 7th July (SHH) at Carleton Road, Higher Poynton.

40.009 *Mompha sturnipennella* (Treitschke, 1833)
One at Holly Court, Helsby on 15th April (MJ&GO) and one at Deansfield Way, Elton on 15th June (SWH).



41.005 *Blastobasis rebeli* (Karsholt & Sinev, 2004)
One at Bourne Street, Wilmslow on 23rd June (TL) and one at Highfield Road, Hazel Grove on 6th July (JWR).

Ted Lock

42.002 *Stathmopoda pedella* (Linnaeus, 1761)
One at Thornton Avenue, Higher Bebington on 16th June (CD).

45.008 **Yarrow Plume** *Gillmeria pallidactyla* (Haworth, 1811)
One at Bayswater Road, Wallasey on 14th June (CS) and one at Burton on 26th August (CL).

45.019 **Saxifrage Plume** *Stenoptilia millieridactyla* (Bruand, 1861)
One at Midgley Lane, Wildboarclough on 24th July (A&JB) one on 3rd August and one on 10th August at Carleton Road, Higher Poynton (SHH).

45.028 **Wood Sage Plume** *Capperia britanniodactylus* (Gregson, 1869)
One at Midgley Lane, Wildboarclough on 7th July (A&JB).

45.037 **Dusky Plume** *Oidaematophorus lithodactyla* (Treitschke, 1833)
Two, attracted to visitor centre outdoor lighting at Burton Mere Wetlands RSPB, on 18th July and two more there on 27th July (GJ).

45.041 **Small Goldenrod Plume** *Hellinsia osteodactylus* (Zeller, 1841)

One at Deansfield Way, Elton on 24th June (SWH) one on 28th July and another on 9th August at Bayswater Road, Wallasey (CS).



47.006 *Epermenia falciformis* (Haworth, 1828)

One at Knowle Close, Great Sutton on 8th September (MBE) and another the next day at Weston Grove, Upton, Chester (RW). The only two previous records of this species in Cheshire were in 2020 and 2022.

Mel Bellingham

49.005 *Epagoge grotiana* (Fabricius, 1781)

One at Birchall Moss, Hatherton on 19th June (CK) and at Carden on 7th July (MRW).

49.010 *Philedonides lunana* (Thunberg, 1784)

Three on 8th April at Goyt Valley and eight at Stake Side, Goyt Valley on the same day, flying in sunshine over heather, from noon onwards.

49.014 **Brown Oak Tortrix** *Archips crataegana* (Hübner, [1799])

One at Common Lane, Waverton on 16th June (HC). This is only the eighth Cheshire record, the second since 1969.

49.023 *Pandemis cinnamomeana* (Treitschke, 1830)

One at Brookledge Lane, Adlington on 13th June (SHH).

49.030 **Carnation Tortrix** *Cacoecimorpha pronubana* (Hübner, [1799])

One at Coppenhall on 6th October (JPB). The adult was found freshly emerged and resting on a leaf roll on a small Common Olive tree, with approximately 12-15 leaves all rolled in larva spinings.

49.035 *Clepsia senecionana* (Hübner, [1819])

Two at Harridge Moor on 13th May and six at Turf Pits, Stalybridge on 3rd June (DW).

49.050 **Grey Tortrix** *Cnephasia stephensiana* (Doubleday, [1849])

A male at Linley Lane, Alsager on 11th June (MD) and two females on 15th June at Wellington Close, Ellesmere Port(HJ).

49.057 *Cnephasia longana* (Haworth, 1811)

One at Shannon Close, Willaston, Nantwich on 3rd July (DT).

49.061 *Acleris holmiana* (Linnaeus, 1758)

One, off hazel, at Whiteley Green on 13th July and one at Brookledge Lane, Adlington on 9th August (SHH).

49.063 *Acleris bergmanniana* (Linnaeus, 1758)

Two at Newton Lane, Tattenhall on 17th June (KH).

49.073 *Acleris schalleriana* (Linnaeus, 1761)

One at Carleton Road, Higher Poynton on 11th February (SHH) and one at Weston Grove, Upton, Chester on 15th December (RW). The species had been recorded in Cheshire only once before, in 2020.

49.082 *Acleris hyemana* (Haworth, 1811)

One at Swineshaw Moor on 21st February (DW).

49.084 *Acleris notana* (Donovan, 1806)

One at Highfield Road, Hazel Grove on 20th February (JWR) and one at Danes Moss on 6th October (SBr, AE, SHH, DJM, JWR).

49.096 *Hysterophora maculosana* (Haworth, 1811)

Six, to a Carnation Tortrix lure ("Dragonfli"), at Midgley Lane, Wildboarclough on 27th May (A&JB).

49.105 *Gynnidomorpha vectisana* (Humphreys & Westwood, 1845)

One at Wellington Close, Ellesmere Port on 21st June (HJ).

49.123 *Aethes beatricella* (Walsingham, 1898)

One at Meadowside, Burwardsley on 24th June (MRW).

49.128 *Aethes rubigana* (Treitschke, 1830)

One at Weston Grove, Upton, Chester on 24th August (RW).



49.138 *Neocochylis molliculana* (Zeller, 1847)

One at Meadowside, Burwardsley on 19th August (MRW). A NEW COUNTY RECORD.

Mike Whiteside

49.172 *Phiaris schulziana* (Fabricius, [1777])

One at Wybunbury Moss on 12th August (BB).

49.178 *Stictea mygindiana* ([Denis & Schifferrmüller], 1775)

Larvae, in numerous spinings on cowberry, at Goyt Valley on 8th April (SHH).

49.191 *Endothenia nigricostana* (Haworth, 1811)

One on 11th June and two on 15th June at Dane Road, Sale (JPS).

49.193 *Endothenia quadrimaculana* (Haworth, 1811)

One at Badger Bait, Little Neston on 7th July (GJ).



49.216 *Ancylys mitterbacheriana* ([Denis & Schiffermüller], 1775)

Two at Brushes Valley, Stalybridge on 26th May (DW).

David Walsh

49.220 *Rhopobota myrtilana* (Humphreys & Westwood, 1845)

Seven, off roadside bilberry, at Wincle on 25th May and thirty-six amongst bilberry at Pike Road, Rainow on 10th June (SHH).

49.222 *Rhopobota ustomaculana* (Curtis, 1831)

A few mines on cowberry at Goyt Valley on 8th April (SHH) and a larva at Bosley Cloud on 28th October (AE).

49.225 *Spilonota laricana* (Heinemann, 1863)

One at Brookledge Lane, Adlington on 13th June (SHH), one at Peckforton Hill on 27th June (MRW) and one at Midgley Lane, Wildboarclough on 19th August (A&JB).

49.231 *Epinotia brunnichana* (Linnaeus, 1767)

One on 20th July and another five days later at Linley Lane, Alsager (MD). Also, one at Danes Moss on 19th August (SBr, AE, RH, SHH).

49.233 *Epinotia solandriana* (Linnaeus, 1758)

Two at Linley Lane, Alsager on 8th July (MD). One on 19th August (SBr, AE, RH, SHH) and another on 6th October at Danes Moss (SBr, AE, SHH, DJM, JWR).

49.237 *Epinotia signatana* (Douglas, 1845)

One at Knowle Close, Great Sutton on 1st July (MBe). The species had been recorded on only nine previous occasions in Cheshire, once at this site.



49.238 **Willow Tortrix** *Epinotia cruciana* (Linnaeus, 1761)
One in wet woodland below Walkerwood dam, at Walkerwood Reservoir, Stalybridge on 22nd June (DW), one, off willow, at Bakestonedale Moor on 24th June (SHH) and one at Heath Lane Allotment, Little Sutton on 26th June (HJ).

David Walsh

49.244 *Epinotia subocellana* (Donovan, 1806)
Two at Gowy Meadows CWT on 4th July (SWH) and one at Midgley Lane, Wildboardclough on 7th July (A&JB).

49.252 *Epinotia tedella* (Clerck, 1759)
Two, off spruce, at Long Highlees Wood, Over Alderley on 4th June (SHH).

49.261 *Crociosema plebejana* (Zeller, 1847)
One at Linley Lane, Alsager on 30th September (MD). This is only the second record of this species in Cheshire, following its first sighting in Congleton in 2022.

49.272 *Eucosma tripoliana* (Barrett, 1880)
One at Brookledge Lane, Adlington on 9th August (SHH).

49.283 *Gypsonoma aceriana* (Duponchel, [1843])
One at St John's churchyard, Burwardsley on 9th August (MRW).

49.284 *Epiblema sticticana* (Fabricius, 1794)
Five, on coltsfoot, at the old tip at Hattersley on 29th May (SHH) .

49.285 *Epiblema scutulana* ([Denis & Schiffermüller], 1775)
One at Swallows Wood, Hollingworth on 31st May (CHe, DW) and one at Carleton Road, Higher Poynton on 14th June (SHH).

49.289 *Epiblema costipunctana* (Haworth, 1811)
One at Hattersley on 7th July (SHH).

49.290 *Epiblema turbidana* (Treitschke, 1835)
One, amongst butterbur, along Pike Road at Rainow on 10th June (SHH).

49.309 *Dichrorampha plumbana* (Scopoli, 1763)
One, off yarrow, at Ashton's Flashes, Northwich on 14th May and two at Griffith's Park, Northwich on 21st May (SHH).

49.311 *Dichrorampha aeratana* (Pierce & Metcalfe, 1915)
One, amongst ox-eye daisy, at the old tip at Hattersley on 29th May (SHH). The species had been recorded on only nine previous occasions in Cheshire.

49.315 *Dichrorampha simpliciana* (Haworth, 1811)
Two at Shannon Close, Willaston, Nantwich on 11th August (DT). This species had been recorded only seven times previously in Cheshire, since the first record in 2005.



49.318 *Dichrorampha vancouverana* (McDunnough, 1935)

One on 29th June and another on 5th July at Common Lane, Waverton (HC), and a further one at Eastham on 20th July (SHa). There had been only eight previous records of this species in Cheshire.

Helen Coan

49.319 *Dichrorampha flavidorsana* (Knaggs,

1867)

One on 4th August, another on 11th August and a third on 15th August, all amongst tansy at Carleton Road, Higher Poynton (SHH).

49.320 *Dichrorampha alpinana* (Treitschke, 1830)

One, amongst Ox-eye Daisy, at Goway Meadows CWT on 4th July (SWH).

49.321 *Dichrorampha petiverella* (Linnaeus, 1758)

One on 12th June and one on 24th June at Holly Court, Helsby (MJ&GO).

49.334 *Cydia cosmophorana* (Treitschke, 1835)

One to TIP lure at Linley Lane, Alsager on 8th June (MD). This is only the eighth record of this species in Cheshire. Two of the previous records were at this site.

49.357 **Plum Fruit Moth** *Grapholita funebrana* (Treitschke, 1835)

One to FUN lure at Carleton Road, Higher Poynton on 14th June. Also two males (one from a beech hedge below a prunus, one from a blackthorn hedge) at Knolls Green on 19th July and another at Higher Hurdsfield on 24th July (SHH).

49.363 *Pammene argyrana* (Hübner, [1799])

Four to SKI lure on 3rd May and one to FUN lure on 23rd May, at Kent Close, Bromborough (PH). Also, one off hawthorn beneath an oak on Davenport Lane, Arclid on 7th May (SHH).

49.365 *Pammene albuginana* (Guenée, 1845)

One at Kent Close, Bromborough on 28th April (PH). This is only the fourth record of this species in Cheshire. All have been from the same site.

49.381 *Strophedra weirana* (Douglas, 1850)

A male to SKI lure at Linley Lane, Alsager on 16th June (MD).



52.008 Red-tipped Clearwing

Synanthedon formicaeformis (Esper, 1782)

One, to FOR lure, at Kent Close, Bromborough on 24th June (PH). This species had been recorded in Cheshire on only five previous occasions.

Paul Hopkins

52.014 Six-belted Clearwing *Bembecia ichneumoniformis* ([Denis & Schifferrmüller], 1775)
At least five at Winnington on 14th June and others on 12th July and 13th July (PBr).



62.024 Rhodophaea formosa (Haworth, 1811)

One at Kingsley on 17th June (PM) and one at Meadowsides, Burwardsley on 6th July (MRW). This species had been recorded in Cheshire on only four previous occasions, the first being in 2010.

Paul Miller

62.034 Acrobasis repandana (Fabricius, 1798)
One at Highfield Road, Hazel Grove on 22nd July (JWR).



John Rayner

62.057 Phycitodes maritima (Tengström, 1848)
One at Wellington Close, Ellesmere Port on 10th July (HJ).

62.059 Phycitodes saxicola (Vaughan, 1870)
One at Wellington Close, Ellesmere Port on 9th August (HJ).



62.062 **Indian Meal Moth** *Plodia interpunctella* (Hübner, [1813])
One at Bourne Street, Wilmslow on 1st April (TL), one found indoors at Kent Close, Bromborough on 11th July (PH) and one at Back Lane, Shavington on 29th July (RB).

Paul Hopkins

63.005 *Pyrausta despicata* (Scopoli, 1763)

One on 6th August and one on 9th August at Love Lane, Wildboarclough (IG) and another at Midgley Lane, Wildboarclough on the same date (A&JB).

63.021 *Anania terrealis* (Treitschke, 1829)

One on 10th June, one on 11th June and two on 7th July at Dane Road, Sale (JPS).

63.060 *Evergestis pallidata* (Hufnagel, 1767)

One at Birchall Moss, Hatherton on 1st July (CK), one at Pembroke Close, Handbridge on 25th July (KP) and one at Kennedy Close, Chester on 27th July (JD).

63.062 *Scoparia subfusca* (Haworth, 1811)

One at Midgley Lane, Wildboarclough on 14th July (A&JB).

63.099 *Catoptria pinella* (Linnaeus, 1758)

One at Broadbottom Road, Mottram on 23rd June (BU).

63.117 **Ringed China-mark** *Parapoynx stratiotata* (Linnaeus, 1758)

One at Farr Hall Drive, Heswall on 27th June (JJ).



63.119 *Musotima nitidalis* (Walker, [1866])
One, most likely from nearby Marbury Hall Nurseries, at Marbury Country Park on 7th October (DB). A NEW COUNTY RECORD.

Dave Bedford



63.122 *Donacaula mucronella* ([Denis & Schiffermüller], 1775)

One on 16th June and one on 19th June at Meadowside, Burwardsley (MRW). The species had been recorded on only nine previous occasions in Cheshire.

Mike Whiteside

66.008 **Fox Moth** *Macrothylacia rubi* (Linnaeus, 1758)

One at Midgley Lane, Wildboarclough on 22nd May (A&JB) and others on 23rd May at Lower Swineshaw Quarry, 24th May at Higher Swineshaw, Stalybridge and on 27th May at Flaxfield Farm, Stalybridge (DW). Also, a larva at High Moor on 3rd September (SM).

69.004 **Convolvulus Hawk-moth** *Agrius convolvuli* (Linnaeus, 1758)

A late instar larva on the Fen Boardwalk at Burton Mere Wetlands RSPB (West) on 15th August (GJ), and adults at Higher Swineshaw, Stalybridge on 17th September (DW) and on the pavement at Booth Lane, Sandbach on 19th October (PJ).

70.004 **Least Carpet** *Idaea rusticata* ([Denis & Schiffermüller], 1775)

One at Linley Lane, Alsager on 10th July (MD). The species had been reported in Cheshire on only eight previous occasions.

70.026 **Smoky Wave** *Scopula ternata* (Schrank, 1802)

Several records from Stalybridge: three at Turf Pits on 3rd June; at least thirty at Harridge Moor on 11th June; two at Wild Bank on 15th June and four at Higher Swineshaw, on 21st June (CHe, BU, DW).



70.027 **Cream Wave** *Scopula floslactata* (Haworth, 1809)

A mating pair at Verdin Close, Moulton on 19th May (PB) and one at Bridgend, Mickle Trafford on 19th June (MB).

Paul Brewster



70.037 **Clay Triple-lines** *Cyclophora linearia* (Hübner, [1799])

One at Oldfield Road, Sandbach on 24th June (DR) and one at Kennel Wood, Lyme Park on 7th July (NE).

Nigel Earp

70.046 **Oblique Carpet** *Orthonama vittata* (Borkhausen, 1794)

One at Pembroke Close, Handbridge on 11th June (KP) and two at Chester Meadows on 3rd September (AI).



70.047 **Gem** *Nycterosea obstipata* (Fabricius, 1794)

One at Marbury Country Park on 9th July (DB), one at Stiles Avenue, Marple on 8th September (MS), one at Meadowside, Burwardsley on 10th October (MRW), and two on consecutive days, 21st and 22nd October, at Weston Grove, Upton, Chester (RW).

Dave Bedford



70.060 **Small Argent & Sable** *Epirrhoe tristata* (Linnaeus, 1758)

One at Brockholes Wood, Crowden on 26th June (CHe & SHe). The species had been recorded in Cheshire on only seven previous occasions and this was the first reported sighting since 2015.

Christian Heintzen

70.063 Galium Carpet *Epirrhoe galiata* ([Denis & Schiffermüller], 1775)

One at Brockholes Wood, Crowden on 27th July (CHe & SHe).

70.068 Beautiful Carpet *Mesoleuca albicillata* (Linnaeus, 1758)

One on 1st June and another on 23rd June at Birchall Moss, Hatherton (CK), one on 10th June and another on 16th June at Kent Close, Bromborough (PH), and one at Peckforton Hill on 27th June (MRW).



70.069 Dark Spinach *Pelurga comitata* (Linnaeus, 1758)

One at Bridgend, Mickle Trafford on 1st August (MB), one at Holly Court, Helsby on 9th August (MJ&GO) and one at Wigg Island, Astmoor Saltmarsh, Runcorn on 18th August (PBr).

Mike Boothman



70.083 Cypress Carpet *Thera cupressata* (Geyer, [1831])

One on 29th Jun and another on 6th October at Knowle Close, Great Sutton (MBe) and one at Newton Lane, Tattenhall on 8th July (KH). This species had been recorded in Cheshire on only three previous occasions, the first in 2015.

Kate Hughes

70.109 Autumnal Moth *Epirrita autumnata* (Borkhausen, 1794)

One, with traps sited next to flowering ivy, at Huddersfield Road, Stalybridge on 25th October, five at Brushes Valley, Stalybridge on 28th October (DW) and one at Brockholes Wood, Crowden on 17th November (CHe). Octavals were checked.



70.110 Small Autumnal Moth *Epirrita filigrammaria* (Herrich-Schäffer, 1846)

One at Pym Chair on 6th September (SHH, JWR) and one at Higher Swineshaw, Stalybridge on 10th September (DW).

David Walsh

70.143 **Sloe Pug** *Pasiphila chloerata* (Mabille, 1870)

A larva, off Blackthorn, at Hyde on 20th April (SHH),, and adult moths at Verdin Close, Moulton on 10th June (PB) and at Common Lane, Waverton on 16th June (HC).

70.164 **Fletcher's Pug** or **Pauper Pug** *Eupithecia egenaria* (Herrich-Schäffer, 1848)

One on 1st June and another on 9th June at Linley Lane, Alsager (MD). This species had been reported in Cheshire on only eight previous occasions, seven of which were from this site.



70.166 **Plain Pug** *Eupithecia simpliciatata* (Haworth, 1809)

One at Meadowside, Burwardsley on 7th July (MRW), one at Holly Court, Helsby on 13th July (MJ&GO) and one at Tencherfield, Nantwich on 14th July (MH).

Mike Holmes



70.169 **Angle-barred Pug** *Eupithecia innotata* (Hufnagel, 1767)

One on 10th June and another on 22nd June at Hightree Drive, Henbury (TW). Also, one at Midgley Lane, Wildboarclough on 16th June (A&JB) and one at Birchall Moss, Hatherton on 13th August (CK).

Julian Borrow

70.188 **Bordered Pug** *Eupithecia succenturiata* (Linnaeus, 1758)

One at Deansfield Way, Elton on 10th August (SWH), one at Kingsley the next day (PM), one at Upton, Chester on 7th September (PR) and one at Bayswater Road, Wallasey on 8th September (CS).

70.189 **Shaded Pug** *Eupithecia subumbrata* ([Denis & Schifferrmüller], 1775)

Two at Bayswater Road, Wallasey on 11th June (CS). This species had been recorded only once before in Cheshire, in 1925.

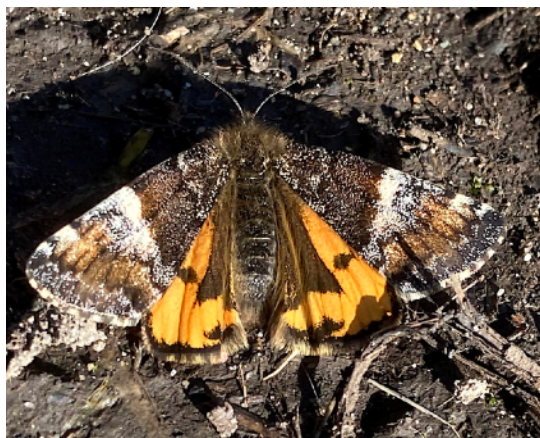
70.191 **Manchester Treble-bar** *Carsia sororiata* (Hübner, [1813])

One at Wybunbury Moss on 13th June (BB).



70.195 **Streak** *Chesias legatella* ([Denis & Schiffermüller], 1775)
One at Badger Bait, Little Neston on 7th October (GJ).

Graham Jones



70.203 **Orange Underwing** *Archiearis parthenias* (Linnaeus, 1761)
One at Astbury Mere (East Bank) on 16th March (JHS), one at Woolston Eyes (No 3 Bed) on 27th March (RW), one at Abbots Moss on 2nd April (PB), one at Nursery Road, Alsager on 8th April (MHD) and one at Ollerton on 9th April (SM).

Paul Brewster



70.206 **Clouded Magpie** *Abraxas sylvata* (Scopoli, 1763)
One on 23rd June and one on 14th July at Midgley Lane, Wildboarclough (A&JB).

Julian Borrow

70.215 **V-Moth** *Macaria wauaria* (Linnaeus, 1758)
One at Farr Hall Drive, Heswall on 13th July (JJ).

John Jakeman





70.217 **Rannoch Looper** *Macaria brunneata* (Thunberg, 1784)

One at Linley Lane, Alsager on 15th June (MD), one at Woodlands Drive, Chester on 16th June (AN) and one at Cross Hey, Handbridge on 17th June (AI). This species had been recorded only once before in Cheshire, in Chester in 1920.

Andy Ingham



71.009 **Lobster Moth** *Stauropus fagi* (Linnaeus, 1758)

One on 9th June and two on 16th June at Bradley (ESJ). This species had been recorded only once before in Cheshire, in 2017.

Ed Spark Jones

71.010 **Marbled Brown** *Drymonia dodonaea* ([Denis & Schiffermüller], 1775)

One on 7th May and one on 19th May at Meadowside, Burwardsley.

One at Peckforton Hill on 13th May and one on 21st May at Peckforton Hill (MRW). The species had been reported in Cheshire on only nine previous occasions, the majority being from the same locations as in 2023.

72.011 **Gypsy Moth** *Lymantria dispar* (Linnaeus, 1758)

One at Birchall Moss, Hatherton on 2nd August (CK). This species had been recorded only once before in Cheshire, at Alderley Edge in 1968.

72.023 **Clouded Buff** *Diacrisia sannio* (Linnaeus, 1758)

Five (four males and one female) at Shemmy Moss on 14th June and five at Abbots Moss on the same day (PB).



72.038 **Four-dotted Footman** *Cybosia mesomella* (Linnaeus, 1758)

One at Shemmy Moss on 14th June and one at Abbots Moss on the same day (PB). Also, one at Graham Road, Blacon on 23rd June (DD).

Dean Davies



72.041 **Four-spotted Footman** *Lithosia quadra* (Linnaeus, 1758)

One at Kent Close, Bromborough on 23rd June (PH), one on the wall next to the moth trap at Garth Drive, Chester on 2nd July (SHo), one at Coppice Avenue, Disley on 8th July (NE), two at Marbury Country Park on 15th July (DB) and one at Circular Drive, Greasby on 19th July (MSi).

Nigel Earp

72.042 **Red-necked Footman** *Atolmis rubricollis* (Linnaeus, 1758)

One at Linley Lane, Alsager on 12th June (MD).

72.060 **Marsh Oblique-barred** *Hypenodes humidalis* (Doubleday, 1850)

Thirty-five on 11th June, forty-four on 16th July, twenty-two on 29th July and seventeen on 12th August, at Wybunbury Moss (BB).

73.010 **Dewick's Plusia** *Macdunnoughia confusa* (Stephens, 1850)

One at Macclesfield Road, Whaley Bridge on 29th September (AS). A NEW COUNTY RECORD.



Angie Seymour

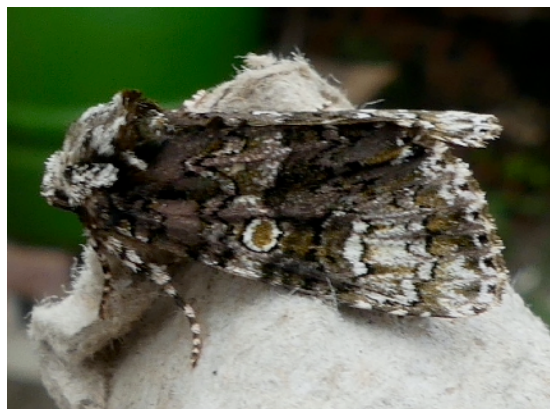
73.037 **Dark Dagger** *Acrionicta tridens* ([Denis & Schiffermüller], 1775)

A larva at Common Lane, Waverton on 21st June (HC) and another at Duxford Close, Runcorn on 23rd September (S&JE).

73.047 **Coronet** *Craniophora ligustri* ([Denis & Schiffermüller], 1775)

One at Woodlands Drive, Chester on 5th June (AN), one at Farr Hall Drive, Heswall on 24th June (JJ), one at Shannon Close, Willaston, Nantwich on 5th July (DT) and one at Red Pike, Little Sutton on 7th July (ACo). The species had been recorded in Cheshire on only seven previous occasions.

John Jakeman



73.048 **Small Yellow Underwing** *Panemeria tenebrata* (Scopoli, 1763)

One at Chester Zoo Nature Reserve on 5th May (RL), and another on the same day, followed by a third on 18th May (CA), one at Carham Road, Hoylake on 12th May (KJF), and one at Macclesfield on 21st May (SDS).

73.053 **Chamomile Shark** *Cucullia chamomillae* ([Denis & Schiffermüller], 1775)

One at Chester Zoo Nature Reserve on 23rd May (AMu, PMu, SRy).

73.065 **Sprawler** *Asteroscopus sphinx* (Hufnagel, 1766)

One on 7th October and another on 22nd October at Common Lane, Waverton (HC).



Also, two on 4th November and seven on 11th November at Newton Lane, Tattenhall (KH), and one at Boughton Heath allotments (site 2) on 14th November (CJ).

Kate Hughes



73.076 **Scarce Bordered Straw**

Helicoverpa armigera (Hübner, [1808])

One at Linley Lane, Alsager on 23rd August (MD), one at Meadowside, Burwardsley on 13th September (MRW), one at Bayswater Road, Wallasey on 7th October (CS) and one at Badger Bait, Little Neston on 9th October (GJ).

Graham Jones

73.085 **Marbled Green** *Bryopsis muralis* (Forster, 1771)

One at Bayswater Road, Wallasey on 10th September (CS).

73.118 **Haworth's Minor** *Celaena haworthii* (Curtis, 1829)

One at Turf Pits, Stalybridge on 9th August (DW), another at the same site on 16th August (CHE, DW) and one at Pym Chair on 6th September (SHH, JWR).



73.124 **Butterbur** *Hydraecia petasitis* (Doubleday, 1847)
One at Love Lane, Wildboarclough on 11th August (IG).
This is only the twenty-first record in Cheshire and the first since 1988.

Ian Gamble

73.126 **Saltern Ear** *Amphipoea fucosa* (Freyer, 1830)
Two at Badger Bait, Little Neston on 9th August (GJ) and one at Wellington Close, Ellesmere Port on 17th August (HJ). Also, one at Meadowside, Burwardsley on 5th September (MRW) and one at Common Lane, Waverton on 6th September (HC)

73.127 **Large Ear** *Amphipoea lucens* (Freyer, 1845)
One at Love Lane, Wildboarclough on 11th August (IG).



73.128 **Ear Moth** *Amphipoea oculea* (Linnaeus, 1761)
One at Kent Close, Bromborough on 10th August (PH), another at Highfield Road, Hazel Grove on 12th August (JWR) and one at Badger Bait, Little Neston on 26th August (GJ). Also, two at Pym Chair on 6th September (SHH, JWR).

Paul Hopkins

73.137 Fen Wainscot *Arenostola phragmitidis* (Hübner, [1803])

One, an early record, at Deansfield Way, Elton on 17th June (SWH), one on 12th July and one on 7th August at Hockenhull Platts (CJ). Also, one at Circular Drive, Greasby on 13th July (L&MH).



73.139 Twin-spotted Wainscot *Lenisa geminipuncta* (Haworth, 1809)

One at Holly Court, Helsby on 6th August (MJ&GO). This species had been recorded in Cheshire on only five previous occasions, ranging from 1919 to 2020.

Mandy Jervis & Glyn Owen

73.161 Crescent Striped *Apamea oblonga* (Haworth, 1809)

One at Deansfield Way, Elton on 16th August (SWH).

73.170 Lesser Common Rustic *Mesapamea didyma* (Esper, 1788)

One on 2nd July and another five days later at Knowle Close, Great Sutton (MBe). A male at Linley Lane, Alsager on 22nd July (MD). One at Watermead Close, Davenport on 28th July and one at Brookledge Lane, Adlington on 9th August (SHH).

73.174 Tawny Marbled Minor *Oligia latruncula* ([Denis & Schiffermüller], 1775)

One at Knowle Close, Great Sutton on 31st May (MBe), one at Bakestonedale Moor on 24th June (SHH) and one at Linley Lane, Alsager on 30th June (MD).

73.175 Rufous Minor *Oligia versicolor* (Borkhausen, 1792)

One at Knowle Close, Great Sutton on 28th June (MBe), four at Brookledge Lane, Adlington on 29th June (SHH) and one at Linley Lane, Alsager on 20th July (MD).

73.183 Dusky-lemon Sallow *Cirrhia gilvago* ([Denis & Schiffermüller], 1775)

One at Hargrave Avenue, Crewe on 16th September (T&EH), one at Newton Lane, Tattenhall on 23rd September (KH) and one at Weston Grove, Upton, Chester on 9th October (RW).



Tim & Elma Halliday



73.211 Angle-striped Sallow *Enargia paleacea* (Esper, 1791)

One at Foxfield Lane, Winsford on 3rd August (AH), one on 23 August, two on 27th August and three on 8th September at Swineshaw Moor (DW).

David Walsh

73.213 Olive *Ipimorpha subtusa* ([Denis & Schiffermüller], 1775)

Two at Marthall Lane, Ollerton on 27th July (CJC), one on 10th August and another on 17th August at Kingsley (PM).

Carly Jo Curbishley



73.228 Grey Chi *Antitype chi* (Linnaeus, 1758)

One at Macclesfield Road, Whaley Bridge on 4th August (AS), one at Love Lane, Wildboarclough on 10th August (IG) and one at Coppice Avenue, Disley on 11th August (NE).



73.232 Deep-brown Dart *Aporophyla lueneburgensis* (Freyer, 1848)²

One at Broadbottom Road, Mottram on 10th September (BU).

Bill Underwood

73.246 Lead-coloured Drab *Orthosia populeti* (Fabricius, 1781)

One at Wybunbury Moss on 18th April (BB).

² The species code and scientific name changed in 2024. DNA bar-coding suggests that we have only one species in Britain, *A. lueneburgensis*, which is now renamed Deep-brown Dart. *A. lutulenta* is now a synonym and the name Northern Deep-brown Dart no longer used.

73.275 **White Colon** *Sideridis turbida* (Esper, 1790)

One at Bayswater Road, Wallasey on 5th June (CS).

73.283 **Marbled Coronet** *Hadena confusa* (Hufnagel, 1766)

One, trapped following easterly wind, at Midgley Lane, Wildboarclough on 10th June (A&JB).



73.295 **Delicate** *Mythimna vitellina* (Hübner, [1808])

One at Carleton Road, Higher Poynton on 10th October (SHH). The species had been reported in Cheshire on only eight previous occasions.

Steve Hind



73.297 **White-point** *Mythimna albipuncta* ([Denis & Schifferrmüller], 1775)

One at Holly Court, Helsby on 25th August (MJ&GO) and one at Higher Swineshaw, Stalybridge on 10th September (DW). This species had been recorded in Cheshire on only three previous occasions: originally at some time between 1961 and 1993, then twice in 2022.

David Walsh

73.299 **Shore Wainscot** *Mythimna litoralis* (Curtis, 1827)

One on 5th June, another on 7th June, one on 14th June and a fourth on 17th June at Bayswater Road, Wallasey (CS).

73.308 **Portland Moth** *Actebia praecox* (Linnaeus, 1758)

One on 12th August and another on 20th August at Bayswater Road, Wallasey (CS).

73.313 **White-line Dart** *Euxoa tritici* (Linnaeus, 1761)

One on 21 June, one on 12th August, two on 20th August and two on 23rd August at Bayswater Road, Wallasey (CS). Also, one at Knowle Close, Great Sutton on 14th September (MBe).

73.320 **Heart and Club** *Agrotis clavis* (Hufnagel, 1766)

One at Shannon Close, Willaston, Nantwich on 20th June (DT).



73.324 **Crescent Dart** *Agrotis trux*
(Hübner, [1824])

One at Shannon Close, Willaston, Nantwich on 28th July (DT). The species had been recorded in Cheshire on only nine previous occasions.

Dave Taylor

73.335 **Fen Square-spot** *Diarsia florida* (Schmidt, 1859)

One 16th June and then two on 27th June at Carleton Road, Higher Poynton (SHH).

73.337 **White-marked** *Cerastis leucographa* ([Denis & Schiffermüller], 1775)

One at Linley Lane, Alsager on 17th April (MD). This species had been recorded in Cheshire on only three previous occasions, including at this site.

73.360 **Triple-spotted Clay** *Xestia ditrapezium* ([Denis & Schiffermüller], 1775)

One on 24th June, another a day later and a third on 10th July at Meadowside, Burwardsley (MRW).

73.362 **Ashworth's Rustic** *Xestia ashworthii* (Doubleday, 1855)

One at Hargrave Avenue, Crewe on 25th June (T&EH). This moth was “new to England”, having been previously restricted to North Wales. It was trapped again in the same location two days later. A NEW COUNTY RECORD. (Photo on Title page).

Records of some species did not meet the criteria for inclusion in the previous section, but are worthy of further comment. Some of these are mentioned below.

The Cheshire Moth Report for 2021 documented an increase, from a very low base, in the number of records of some macro-moths. An update was presented in the 2022 report. The following table gives an update for 2023.

	Reported 2021-2022	Update for 2022-2023
52.014 Six-belted Clearwing <i>Bembecia ichneumoniformis</i>	Recorded eight times in 2021, not only around the Northwich flashes, but also at Ellesmere Port and Thurstaston, making 58 Cheshire records in all.	Only three records in 2022, from Ellesmere Port, Port Sunlight and Ashton's Flashes; see "Least Recorded Species". Another three records were added in 2023, all at Winnington.
65.003 Barred Hook-tip <i>Watsonalla cultraria</i>	In three years, the number of Cheshire records almost doubled. The seven records in 2021 were all in the east of the county.	Eleven more records from May to September 2022, spreading north and south. Eight records in the east in 2023, plus one in the Wirral.
70.036 Maiden's Blush <i>Cyclophora punctaria</i>	Of the 65 Cheshire records, 38 were dated between the 1800's and 1973; the majority were from Delamere Forest. Fifteen new records were added in the two years to 2021; the nine in 2021 were distributed widely throughout the county.	In 2022, the species was recorded 23 times, in May and in August and September, at various sites reflecting the ongoing wide distribution in the county. The trend continued in 2023, with 27 more records.
70.055 Large Twin-spot Carpet <i>Xanthorhoe quadrfasiata</i>	First recorded in Cheshire in 2006, at Alsager. Sighted nine times in 2021, from Burwardsley to Marple, taking the total number of records in Cheshire to 41.	Nineteen records, from late June and July. The range appears to have extended towards the further reaches of the county. The same number showed again in 2023.
70.104 Devon Carpet <i>Lampropteryx otregiata</i>	Two records were conspicuous among the thirteen in 2021: the observations at Burton Mere Wetlands and at Wybunbury were the only ones away from the more usual stamping ground of Wildboardclough, Lyme Park and Higher Poynton. The Cheshire total then stood at 62.	Sixteen records from May to September 2022, those from Hockenhull Platts, Waverton, Wybunbury Moss and Alsager were the only ones outside of the north-east of the county. Another 15 records were added in 2023.
70.110 Small Autumnal Moth <i>Epirrita filigrammaria</i>	After a gap of two years, 2021 brought a similar percentage increase in the total number of records, all from its stronghold of the eastern hills.	Three records in 2022, from Goyt Valley and Lower Swineshaw, Stalybridge; and only two in 2023: see "Least Recorded Species".
70.264 Satin Beauty <i>Deileptenia ribeata</i>	The number of Cheshire records went up by over 18 per cent, five of the seven records in 2021 coming from Alsager.	Only three records in 2022, from Alsager and Lamaload, but Burwardsley, Peckforton Hill, Alsager, Lyme Park and Hoo Moor provided seven records for 2023.
72.010 Black Arches <i>Lymantria monacha</i>	There had been only fourteen records in Cheshire, up to 2019. The total by 2021 had reached 44, predominantly from the south and west of the county.	Almost a 50% increase in the Cheshire total, the 21 records in 2022 came in July and August. A doubling of the total occurred in 2023, with 61 records.
72.049 Orange Footman <i>Eilema sororcula</i>	The ten records in 2021 took the total for Cheshire to 52.	From Alsager to Heswall, and points in between, there were 22 records from May to July 2022, and another 32 in 2023.
73.059 Toadflax Brocade <i>Calophasia lunula</i>	Nine of the ten records in 2021 were in the area around Crewe and Nantwich, but a specimen was also observed in September in Ellesmere Port.	All eight records, from May to August 2022, were from the area just south of Crewe. In 2023, a further twenty-two records were added, in the same area.
73.085 Marbled Green <i>Nyctobrya muralis</i>	Recorded seven times in 2021, at New Brighton and at Wallasey. The only previous record was of two specimens on a wall at Chester in 1899.	Eight records at Wallasey, in July and August 2022, but only one in 2023.

73.322 Archer's Dart <i>Agrotis vestigialis</i>	From June to August 2022, the species was recorded twelve times in Wallasey and Hoyle, taking the total for Cheshire to 71.	The same site in Wallasey provided another ten records in 2023.
35.118 Beet Moth <i>Scrobipalpa ocellatella</i>	Following what was described as an “unprecedented irruption”, there were no fewer than ten records in August and September of the species. The sightings were mainly in the north-east of the county, from Whaley Bridge to Sale, although there was also a cluster around Wyburnbury (SJ64) and one was noted as far west as Kingsley (SJ57).	The species was recorded just once in 2023, at Danes Moss (see Least Recorded Species).
49.086 Acleris <i>Acleris logiana</i>	The first appearance of the species was in Alsager, in March 2022. There were further sightings, in Sale in July, and Hatherton in November, as well as Alsager again in October.	A further five records were added in 2023.
15.011 Caloptilia <i>Caloptilia falconipennella</i>	First recorded in Cheshire in 2021, a further four records were added in 2022.	An adult moth was seen in Kingsley in April, and a leaf mine in Partington in October (see Least Recorded Species).
49.356 Grapholita <i>Grapholita lobarzewskii</i>	The seven records in 2022, all but one to a SKI pheromone lure, added to the three since the species was first recorded in Nantwich in 2018.	A further seven records in 2023 came from Alsager, Higher Poynton and Adlington.
72.029 Scarlet Tiger <i>Callimorpha dominula</i>	The distribution map in 2022 showed how the species was spreading, but only in the west of Cheshire. The county total stood at 49, with twelve records of adult moths and two of larvae in 2022.	Another forty records were added in 2023, again mainly in the west of the county, but now pushing into the south-east at Alsager.
70.037 Clay Triple-lines <i>Cyclophora linearia</i>	Although the eight records in 2022 were scattered around the county, the distribution map showed that the species had started to show up in the north-east of Cheshire. The total of records stood at 47 in 2022.	Lyme Park and Sandbach provided the only two new records for 2023 (see Least Recorded Species).
72.041 Four-spotted Footman <i>Lithosia quadra</i>	Only recorded six times previously this century, it was observed on eight occasions in 2022, all in July.	Five records were added in 2023, in June and July, from west, centre and east of Cheshire (see Least Recorded Species).
70.146 Haworth's Pug <i>Eupithecia haworthiata</i>	Seen seven times in 2022. Most of the historic records were from the north-east of Cheshire, then more recently from Burwardsley, but in 2022 the species was noted only in the north-west of the county, from Helsby and Chester to Wallasey.	This species was not recorded in 2023 in Cheshire.
73.137 Fen Wainscot <i>Arenostola phragmitidis</i>	A reed-bed moth, recorded here just twenty times prior to 2022, then seven times in that year, only in the north-west of Cheshire.	Only four more records were added in 2023, in Greasby, Elton and twice at Hockenhull Platts.
73.021 Scarce Silver Y <i>Syngrapha interrogationis</i>	Stalybridge and Mottram-in-Longendale in July yielded seven adult records. With the addition of larva of the species at Woodhead in March, the total for Cheshire stood at 31 by the end of 2022.	Similar sites in the north-east of the county provided nine more records in 2023.

Species new for their respective 10km squares in 2023

Here is a summary of the species that were new for their respective 10km squares in 2023. A further 568 new hectad records were added during 2023 (up from 517 in 2022).

Ongoing field work in the Stalybridge area continued to bear fruit. The 49 new species in the SK09 square exceeded the 46 recorded in 2022. Micro-moths formed the majority of the 33 new species in the SJ27 square, but Barred Hook-tip, Muslin Footman, Alder Moth and Brindled Green were also new there. Neighbouring squares SJ96 and SK06 recorded 61 new species between them.

Some of the squares are only partially in VC58 and although species may have been recorded in adjacent counties, they are new for our side of the boundary. The following are listed in the Agassiz, Beavan & Heckford taxonomic order for each 10km square.



SD90

Eriocrania semipurpurella; **Bird-cherry Ermine** *Yponomeuta evonymella*; **Small Fan-footed Wave** *Idaea biselata*; **Chevron** *Eulithis testata*; **Twin-spot Carpet** *Mesotype didymata*; **Wormwood Pug** *Eupithecia absinthiata*; **Peppered Moth** *Biston betularia*; **Ruby Tiger** *Phragmatobia fuliginosa*; **Silver Y** *Autographa gamma*; **Lempke's Gold Spot** *Plusia putnami*; **Flounced Rustic** *Luperina testacea*; **Dark Arches** *Apamea monoglyphia*; **Golden-rod Brindle** *Xylota solidaginis*; **Antler Moth** *Cerapteryx graminis*; **Smoky Wainscot** *Mythimna impura*; **Dark Sword-grass** *Agrotis ipsilon*; **Flame Shoulder** *Ochropleura plecta*; **True Lover's Knot** *Lycophotia porphyrea*; **Large Yellow Underwing** *Noctua pronuba*; **Lesser Yellow Underwing** *Noctua comes*; **Dotted Clay** *Xestia baja*; **Square-spot Rustic** *Xestia xanthographa*; **Six-striped Rustic** *Xestia sexstrigata*.

SE00

Many-plumed Moth *Alucita hexadactyla*; *Cydia splendana*; **Bee Moth** *Aphomia sociella*; **Garden Grass-veneer** *Chrysoteuchia culmella*; **Common Lutestring** *Ochropacha duplaris*; **December Moth** *Poecilocampa populi*; **Poplar Hawk-moth** *Laothoe populi*; **Small Fan-footed Wave** *Idaea biselata*; **Water Carpet** *Lampropteryx suffumata*; **Golden-rod Pug** *Eupithecia virgaureata*; **Wormwood Pug** *Eupithecia absinthiata*; **Pale Brindled Beauty** *Phigalia pilosaria*; **Dotted Border** *Agriopis marginaria*; **Grey Birch** *Aethalura punctulata*; **Iron**

Prominent *Notodonta dromedarius*; **Straw Underwing** *Thalpophila matura*; **Dot Moth** *Melanchra persicariae*; **Dark Sword-grass** *Agrotis ipsilon*.

SJ27

Stigmella confusella; *Stigmella sakhalinella*; *Stigmella luteella*; *Stigmella obliquella*; *Stigmella assimilella*; *Ectoedemia heringella*; *Bucculatrix thoracella*; *Bucculatrix ulmella*; *Parornix finitimella*; *Phyllonorycter lantanaella*; *Phyllonorycter stettinensis*; *Phyllonorycter acerifoliella*; **Willow Ermine** *Yponomeuta rorrella*; **Pear Leaf Blister Moth** *Leucoptera malifoliella*; *Oegoconia quadripuncta*; *Scrobipalpa acuminatella*; *Scrobipalpa costella*; *Coleophora deauratella*; *Acleris emargana*; *Acleris hastiana*; *Acleris ferrugana*; *Orthotaenia undulana*; *Hedya salicella*; *Endothenia quadrimaculana*; **Cherry Bark Tortrix** *Enarmonia formosana*; *Epinotia immundana*; **Spotted Shoot Moth** *Rhyacionia pinivorana*; *Pammene giganteana*; **Lesser Wax Moth** *Achroia grisella*; **Barred Hook-tip** *Watsonalla cultraria*; **Muslin Footman** *Nudaria mundana*; **Alder Moth** *Acronicta alni*; **Brindled Green** *Dryobotodes eremita*.

SJ28

Ectoedemia heringi; *Caloptilia elongella*; *Parornix finitimella*; *Phyllonorycter esperella*; *Ypsolopha sylvella*; *Coleophora artemisicolella*; *Mompha ochraceella*; *Epinotia nisella*; *Pammene fasciana*; *Acrobasis consociella*; **Gypsy Moth** *Lymantria dispar*; **Coronet** *Craniophora ligustri*.

SJ29

Phyllonorycter emberizaepenella; *Ypsolopha sequella*; *Prays ruficeps*; *Batia lunaris*; *Acleris sparsana*; *Epinotia nisella*; *Notocelia trimaculana*; **Spotted Shoot Moth** *Rhyacionia pinivorana*; *Cydia splendana*; *Pammene fasciana*; **Thistle Ermine** *Myelois circumvoluta*; **Box-tree Moth** *Cydalima perspectalis*; *Catoptria falsella*; **Narrow-winged Pug** *Eupithecia nanata*; **Shaded Pug** *Eupithecia subumbrata*; **Oak Beauty** *Biston strataria*; **Mullein** *Cucullia verbasci*; **Orange Sallow** *Tiliacea citrigo*; **Pale Pinion** *Lithophane socia*; **Centre-barred Sallow** *Atethmia centrigo*.

SJ35

Grey Shoulder-knot *Lithophane ornitopus*.

SJ36

Azalea Leaf Miner *Caloptilia azaleella*; *Ypsolopha sequella*; *Agonopterix propinquella*; *Agonopterix arenella*; *Mompha subbistrigella*; *Blastobasis laticolella*; **Variegated Golden Tortrix** *Archips xylosteana*; *Tortricodes alternella*; **Rhomboid Tortrix** *Acleris rhombana*; *Gypsonoma oppressana*; *Notocelia cynosbatella*; *Cydia fagiglandana*; **Lesser Wax Moth** *Achroia grisella*; **Wax Moth** *Galleria mellonella*; *Acrobasis consociella*; *Phycitodes binaevella*; **Meal Moth** *Pyralis farinalis*; *Agriphila iniquatella*; **Orange Footman** *Eilema sororcula*.

SJ37

Argyresthia glaucinella; *Mompha jurassicella*; *Mompha bradleyi*; **Willow Tortrix** *Epinotia cruciana*; *Pammene giganteana*.

SJ38

Luffia lapidella; *Morphophaga choralis*; *Psoricoptera gibbosella*; *Coleophora paripennella*; *Lozotaenia forsterana*; **Red-tipped Clearwing** *Synanthedon formicaeformis*.

SJ39

Common Clothes Moth *Tineola bisselliella*; *Monopis crocicapitella*; **Azalea Leaf Miner** *Caloptilia azaleella*; *Argyresthia brockella*; *Agonopterix arenella*; *Coleophora albicosta*; *Epiblema foenella*; **Rush Veneer** *Nomophila noctuella*; **Chinese Character** *Cilix glaucata*; **Pale Brindled Beauty** *Phigalia pilosaria*; **Alder Moth** *Acronicta alni*; **Grey Shoulder-knot** *Lithophane ornitopus*; **Lunar Underwing** *Anchoscelis lunosa*.

SJ45

Brown House-moth *Hofmannophila pseudospretella*; *Agonopterix alstromeriana*; *Helcystogramma rufescens*; **Beautiful Plume** *Amblyptilia acanthadactyla*; **Common Plume** *Emmelina monodactyla*; *Eucosma hohewartiana*; *Eudonia mercurella*; **Blue-bordered Carpet** *Plemyria rubiginata*; **Slender Pug** *Eupithecia tenuiata*; **Dingy Shears** *Apterogenum ypsilon*; **White-marked** *Cerastis leucographa*.

SJ46

Stigmella aceris; *Phyllonorycter hostis*; *Phyllocnistis saligna*; *Metalampra italica*; *Neofaculta ericetella*; *Acleris schalleriana*; *Pammene giganteana*; **Fruitlet Mining Tortrix** *Pammene rhediella*; **Large Twin-spot Carpet** *Xanthorhoe quadrifasciata*; **Clifden Nonpareil** *Catocala fraxini*.

SJ47

Common Clothes Moth *Tineola bisselliella*; *Caloptilia populetorum*; *Cedestis gysseleniella*; *Argyresthia glaucinella*; *Bryotropha senectella*; *Gelechia nigra*; *Scrobipalpa nitentella*; *Acleris logiana*; *Gynnidomorpha*

vectisana; *Falseuncaria ruficiliana*; *Cydia fagiglandana*; *Ephestia woodiella*; *Anania lancealis*; **Pine Hawk-moth** *Sphinx pinastri*; **Large Twin-spot Carpet** *Xanthorhoe quadrifasiata*; **Four-spotted Footman** *Lithosia quadra*; **Twin-spotted Wainscot** *Lenisa geminipuncta*; **White-point** *Mythimna albipuncta*.

SJ54

Lobster Moth *Stauropus fagi*.

SJ55

Cypress Tip Moth *Argyresthia cupressella*; *Oegoconia quadripuncta*; *Metzneria metzneriella*; *Monochroa lucidella*; *Lozotaeniodes formosana*; *Cochylimorpha straminea*; *Aethes beatricella*; *Neocochyliis molliculana*; *Eucosma hohewartiana*; *Gypsonoma aceriana*; *Pammene aurita*; *Donacula mucronella*; **Pine Hawk-moth** *Sphinx pinastri*; **Gem** *Nyctosea obstipata*; **Seraphim** *Lobophora halterata*; **Saltern Ear** *Amphipoea fucosa*.

SJ56

Willow Ermine *Yponomeuta rorrella*; **Box-tree Moth** *Cydalima perspectalis*.

SJ57

Micropterix aruncella; *Caloptilia falconipennella*; *Zelleria hepariella*; *Paraswammerdamia albicapitella*; *Prays ruficeps*; *Coleophora deauratella*; *Acleris logiana*; *Cydia fagiglandana*; *Rhodophaea formosa*; **Cypress Pug** *Eupithecia phoeniceata*; **Scarlet Tiger** *Callimorpha dominula*; **Obscure Wainscot** *Leucania obsoleta*.

SJ58

Ectoedemia heringella; **Vine's Rustic** *Hoplodrina ambigua*; **Grey Shoulder-knot** *Lithophane ornitopus*.

SJ63

Cauchas rufimitrella; *Nematopogon schwarziellus*; *Nematopogon swammerdamella*; *Phyllonorycter harrisella*; *Ypsolopha scabrella*; **Cocksfoot Moth** *Glyphipterix simpliciella*; **Apple and Plum Case-bearer** *Coleophora spinella*; **Barred Fruit-tree Tortrix** *Pandemis cerasana*; *Tortricodes alternella*; **Rhomboid Tortrix** *Acleris rhombana*; **Marbled Orchard Tortrix** *Hedya nubiferana*; **Bramble Shoot Moth** *Notocelia uddmanniana*; **Mother of Pearl** *Patania ruralis*; **Dark-barred Twin-spot Carpet** *Xanthorhoe ferrugata*; **Winter Moth** *Operophtera brumata*; **Early Moth** *Theria primaria*; **Satellite** *Eupsilia transversa*; **Common Quaker** *Orthosia cerasi*.

SJ64

Psyche casta; *Tinea trinotella*; *Argyresthia retinella*; *Agonopterix yeatiana*; *Brachmia blandella*; *Metzneria lappella*; *Carpatolechia alburnella*; *Coleophora striatipennella*; *Elachista argentella*; *Mompha ochraceella*; *Epagoge grotiana*; *Ptycholoma lecheana*; *Tortricodes alternella*; *Acleris literana*; *Aethes cnicana*; *Thyralia nana*; *Epinotia abbreviana*; *Pammene regiana*; *Agriphila iniquatella*; **Devon Carpet** *Lampropteryx otregiata*; **Gypsy Moth** *Lymantria dispar*; **Vine's Rustic** *Hoplodrina ambigua*.

SJ65

Stigmella confusella; **Common Clothes Moth** *Tineola bisselliella*; *Acrocercops brongniardella*; *Phyllocnistis saligna*; *Anarsia innoxia*; *Carpatolechia alburnella*; *Batrachedra confusella*; **Apple and Plum Case-bearer** *Coleophora spinella*; *Cnephasia longana*; *Agapeta zoegana*; *Gypsonoma oppressana*; *Dichrorampha simpliciana*; **Clifden Nonpareil** *Catocala fraxini*; **Coronet** *Craniophora ligustri*; **Crescent Dart** *Agrotis trux*; **Ashworth's Rustic** *Xestia ashworthii*.

SJ66

Crassa unitella; *Hedya salicella*; *Lobesia abscisana*; *Ancylis achatana*; *Pammene regiana*; *Euzophora pinguis*; **Beautiful China-mark** *Nymphula nitidulata*; **Dwarf Cream Wave** *Idaea fuscovenosa*; **Sloe Pug** *Pasiphila chloerata*; **Golden-rod Pug** *Eupithecia virgaureata*; **Mother Shipton** *Callistege mi*; **Angle-striped Sallow** *Enargia paleacea*; **Pearly Underwing** *Peridroma saucia*.

SJ67

Wax Moth *Galleria mellonella*; *Acrobasis consociella*; *Musotima nitidalis*; **Maiden's Blush** *Cyclophora punctaria*.

SJ68

Triangle Plume *Platyptilia gonodactyla*; *Schreckensteinia festaliella*.

SJ75

Stigmella aceris; *Stigmella ulmivora*; **Ash Bud Moth** *Prays fraxinella*; *Gypsonoma oppressana*; **Clay Triple-lines** *Cyclophora linearis*; **Rivulet** *Perizoma affinitata*; **Scarlet Tiger** *Callimorpha dominula*; **Orange Footman** *Eilema sororcula*; **Clouded Brindle** *Apamea epomidion*.

SJ76

Nematopogon swammerdamella; *Incurvaria masculella*; *Ocnerostoma friesei*; *Coleophora paripennella*; *Pammene argyrana*; **Fruitlet Mining Tortrix** *Pammene rhediella*; *Palpita vitrealis*; **Toadflax Brocade** *Calophasia lunula*; **Tawny Pinion** *Lithophane semibrunnea*.

SJ77

Argyresthia spinosella; *Eucosma campoliliana*; *Euzophera pinguis*; *Phycitodes binaevella*; **Cypress Pug** *Eupithecia phoeniceata*.

SJ78

Phyllocnistis saligna; **Willow Ermine** *Yponomeuta rorrella*; *Gypsonoma sociana*.

SJ79

Stigmella trimaculella; *Stigmella plagiolella*; *Stigmella lemniscella*; *Stigmella hemargyrella*; *Stigmella speciosa*; *Fomoria septembrella*; *Ectoedemia intimella*; *Ectoedemia subbimaculella*; *Bucculatrix ulmella*; *Caloptilia elongella*; *Caloptilia falconipennella*; *Phyllonorycter messaniella*; *Phyllonorycter platani*; *Phyllonorycter cerasicolella*; *Phyllonorycter corylifoliella*; *Phyllonorycter esperella*; *Phyllonorycter emberizaepenella*; *Phyllocnistis saligna*; *Plutella porrectella*; *Scrobipalpa acuminatella*; *Coleophora gryphipennella*; *Coleophora peribenanderi*; *Mompha epilobiella*; *Neocoehylis dubitana*; *Udea prunalis*; *Eudonia angustea*; **Small Ranunculus** *Hecatera dysodea*.

SJ85

Case-bearing Clothes Moth *Tinea pellionella*; *Caloptilia semifascia*; *Caloptilia honoratella*; *Crociosema plebejana*; **Fruitlet Mining Tortrix** *Pammene rhediella*; **Least Carpet** *Idaea rusticata*; **Cypress Pug** *Eupithecia phoeniceata*; **Rannoch Looper** *Macaria brunneata*; **Scarlet Tiger** *Callimorpha dominula*.

SJ86

Nemaxera betulinella; *Phyllonorycter dubitella*; *Ocnerostoma friesei*; *Agonopterix alstromeriana*; *Coleophora otidipennella*; *Gypsonoma oppressana*; **Yellow-legged Clearwing** *Synanthedon vespiformis*; **Ochreous Pug** *Eupithecia indigata*; **Vine's Rustic** *Hoplodrina ambigua*; **Oak Nycteoline** *Nycteola revayana*.

SJ87

Orchard Ermine *Yponomeuta padella*; *Limnaecia phragmitella*; *Coleophora paripennella*; *Capua vulgana*; *Dichrorampha acuminatana*; *Agriphila geniculea*; **Maiden's Blush** *Cyclophora punctaria*; **Burnet Companion** *Euclidia glyphica*; **Vine's Rustic** *Hoplodrina ambigua*.

SJ88

Chrysoclista lathamella.

SJ89

Skin Moth *Monopis laevigella*; *Cedestis subfasciella*; *Agonopterix conterminella*; **Parsnip Moth** *Depressaria radiella*; *Gelechia sororculella*; *Coleophora trifolii*; *Coleophora deauratella*; **Variegated Golden Tortrix** *Archips xylosteana*; *Acleris literana*; **Maiden's Blush** *Cyclophora punctaria*; **Slender Pug** *Eupithecia tenuiata*; **Dwarf Pug** *Eupithecia tantillaria*; **Ochreous Pug** *Eupithecia indigata*; **Tawny-barred Angle** *Macaria liturata*; **Muslin Moth** *Diaphora mendica*; **Tawny Pinion** *Lithophane semibrunnea*; **Green Arches** *Anaplectoides prasina*.

SJ96

Skin Moth *Monopis laevigella*; *Phyllonorycter acerifoliella*; **Orchard Ermine** *Yponomeuta padella*; **Cypress Tip Moth** *Argyresthia cupressella*; *Batrachedra praeangusta*; *Coleophora coracipennella*; *Coleophora otidipennella*; *Mompha jurassicella*; *Schreckensteinia festaliella*; *Acleris forsskaleana*; *Acleris ferrugana*; *Cochylimorpha straminea*; *Aethes cnicana*; **Bud Moth** *Spilonota ocellana*; *Eucosma cana*; **Bramble Shoot Moth** *Notocelia uddmanniana*; **Yellow-legged Clearwing** *Synanthedon vespiformis*; *Pyrausta despicata*; **Box-tree Moth** *Cydalima perspectalis*; **Garden Pebble** *Evergestis forficalis*; **Dingy Shell** *Euchoeca nebulata*; **Golden-rod Pug** *Eupithecia virgaureata*; **Tawny Speckled Pug** *Eupithecia icterata*; **Muslin Moth** *Diaphora mendica*; **Butterbur** *Hydraecia petasitis*; **Small Clouded Brindle** *Apamea unanimitis*; **Rosy Minor** *Litologia literosa*; **Grey Shoulder-knot** *Lithophane ornitopus*; **Suspected Parastichtis** *suspecta*; **Six-striped Rustic** *Xestia sexstrigata*.

SJ97

Orchard Ermine *Yponomeuta padella*; *Anacamptis populella*; **Beet Moth** *Scrobipalpa ocellatella*; *Coleophora mayrella*; *Coleophora saxicolella*; *Epinotia brunnichana*; **Plum Fruit Moth** *Grapholita funebrana*; *Pammene giganteana*; **Wax Moth** *Galleria mellonella*; **Thistle Ermine** *Myelois circumvoluta*; **Rusty-dot Pearl** *Udea ferrugalis*.

SJ98

Spindle Ermine *Yponomeuta cagnagella*; *Agonopterix alstromeriana*; *Acleris schalleriana*; *Eucosma tripoliana*; **Black Arches** *Lymantria monacha*; **Clifden Nonpareil** *Catocala fraxini*; **Delicate** *Mythimna vitellina*.

SJ99

Bohemannia pulverosella; *Ectoedemia heringella*; *Denisia similella*; *Agonopterix conterminella*; *Coleophora deauratella*; *Coleophora otidipennella*; *Elachista albifrontella*; *Mompha jurassicella*; *Mompha bradleyi*; *Ptycholoma lecheana*; *Acleris literana*; *Ancylis mitterbacheriana*; *Epiblema costipunctana*; *Dichrorampha alpestrana*; *Grapholita compositella*; **Currant Clearwing** *Synanthedon tipuliformis*; *Acrobasis consociella*; *Anania perlucidalis*; *Agriphila selasella*; *Catoptria pinella*; **Maiden's Blush** *Cyclophora punctaria*; **Devon Carpet** *Lampropteryx otregiata*; **Brindled Beauty** *Lycia hirtaria*; **Black Arches** *Lymantria monacha*; **Round-winged Muslin** *Thumatha senex*; **Orange Footman** *Eilema sororcula*; **Vine's Rustic** *Hoplodrina ambigua*; **Brown-line Bright-eye** *Mythimna conigera*.

SK06

Eriocrania sangii; **Nut Leaf Blister Moth** *Phyllonorycter coryli*; *Glyphipterix thrasonella*; *Agonopterix heracliensis*; *Monochroa tenebrella*; *Scrobipalpa acuminatella*; *Scrobipalpa costella*; *Coleophora flavipennella*; **Clover Case-bearer** *Coleophora alcyonipennella*; *Mompha subbistrigella*; **Triangle Plume** *Platyptilia gonodactyla*; **Chequered Fruit-tree Tortrix** *Pandemis corylana*; *Aleimma loeflingiana*; *Acleris literana*; *Celypha striana*; *Ancylis achatana*; *Spilonota laricana*; *Epiblema foenella*; *Pammene giganteana*; *Pammene fasciana*; *Scoparia subfusca*; *Chilo phragmitella*; **Angle-barred Pug** *Eupithecia innotata*; **Muslin Moth** *Diaphora mendica*; **Shark** *Cucullia umbratica*; **Crescent** *Helotropha leucostigma*; **Small Clouded Brindle** *Apamea unanimes*; **Dark Chestnut** *Conistra ligula*; **Marbled Coronet** *Hadena confusa*; **Southern Wainscot** *Mythimna straminea*; **Obscure Wainscot** *Leucania obsoleta*.

SK07

Psyche casta; *Diurnea fagella*.

SK08

Helcystogramma rufescens; *Aleimma loeflingiana*; **Lunar Hornet Moth** *Sesia bembeciformis*; **Currant Clearwing** *Synanthedon tipuliformis*; *Catoptria falsella*; **Water Veneer** *Acentria ephemerella*; **Grey Scalloped Bar** *Dyscia fagaria*; **Puss Moth** *Cerura vinula*; **Red Underwing** *Catocala nupta*; **Dewick's Plusia** *Macdunnoughia confusa*; **Obscure Wainscot** *Leucania obsoleta*; **Oak Nycteoline** *Nycteola revayana*.

SK09

Ghost Moth *Hepialus humuli*; *Denisia similella*; **White-shouldered House-moth** *Endrosis sarcitrella*; *Agonopterix arenella*; *Capua vulgana*; *Aleimma loeflingiana*; *Epinotia tetraquetra*; **Bee Moth** *Aphomia sociella*; *Hypsopygia glaucinalis*; *Anania coronata*; **Barred Hook-tip** *Watsonalla cultraria*; **Peach Blossom** *Thyatira batis*; **Eyed Hawk-moth** *Smerinthus ocellata*; *Convolvulus Hawk-moth* *Agrius convolvuli*; **Single-dotted Wave** *Idaea dimidiata*; **Plain Wave** *Idaea straminata*; **Shaded Broad-bar** *Scotopteryx chenopodiata*; **Shoulder Stripe** *Earophila badiata*; **Mottled Grey** *Colostygia multistrigaria*; **Devon Carpet** *Lampropteryx otregiata*; **November Moth** *Epirrita dilutata*; **White-spotted Pug** *Eupithecia tripunctaria*; **Lime-speck Pug** *Eupithecia centaureata*; **Dusky Thorn** *Ennomos fuscantaria*; **September Thorn** *Ennomos erosaria*; **Purple Thorn** *Selenia tetralunaria*; **Scalloped Oak** *Crocallis elingaria*; **Pale Brindled Beauty** *Phigalia pilosaria*; **Spring Usher** *Agriopis leucophaearia*; **Dotted Border** *Agriopis marginaria*; **White-pinion Spotted** *Lomographa bimaculata*; **Common Emerald** *Hemithea aestivaria*; **Puss Moth** *Cerura vinula*; **Sallow Kitten** *Furcula furcula*; **Chocolate-tip** *Clostera curtula*; **Beautiful Snout** *Hypena crassalis*; **White Satin** *Leucoma salicis*; **Blackneck** *Lygephila pastinum*; **Beautiful Hook-tip** *Laspeyria flexula*; **Red Underwing** *Catocala nupta*; **Mouse Moth** *Amphipyra tragopoginis*; **Frosted Orange** *Gortyna flavago*; **Large Wainscot** *Rhizedra lutosaria*; **Rustic Shoulder-knot** *Apamea sordens*; **Pink-barred Sallow** *Xanthia togata*; **Red-line Quaker** *Leptologia lota*; **White-point** *Mythimna albipuncta*; **Green Arches** *Anaplectoides prasina*; **Flounced Chestnut** *Anchoscelis helvola*.

SK09

Agriphila tristella.

Migrant Species in 2023

The following table shows the species of migrant moths that were recorded in Cheshire in 2023.

ABH	Common Name	Taxon	Records	Moths	Earliest Date	Latest Date
18.001	Diamond-back Moth	<i>Plutella xylostearna</i>	254	420	4 May	4 Nov
28.008	-	<i>Metalampra italica</i>	1	1	9 Sep	9 Sep
63.031	Rusty-dot Pearl	<i>Udea ferrugalis</i>	60	68	13 May	23 Nov
63.048	-	<i>Palpita vitrealis</i>	6	6	12 Aug	10 Oct
63.052	Rush Veneer	<i>Nomophila noctuella</i>	7	7	24 Jun	8 Sep
69.004	Convolvulus Hawk-moth	<i>Agrius convolvuli</i>	3	3	15 Aug	19 Oct
69.010	Humming-bird Hawk-moth	<i>Macroglossum stellatarum</i>	81	82	16 Mar	31 Oct
70.038	Vestal	<i>Rhodometra sacraria</i>	18	18	23 Aug	9 Oct
70.047	Gem	<i>Nycterosea obstipata</i>	5	5	9 Jul	22 Oct
72.041	Four-spotted Footman	<i>Lithosia quadra</i>	5	5	23 Jun	19 Jul
72.076	Clifden Nonpareil	<i>Catocala fraxini</i>	10	10	24 Aug	8 Oct
73.015	Silver Y	<i>Autographa gamma</i>	1444	3073	1 May	17 Dec
73.076	Scarce Bordered Straw	<i>Helicoverpa armigera</i>	4	4	23 Aug	9 Oct
73.295	Delicate	<i>Mythimna vitellina</i>	1	1	10 Oct	10 Oct
73.307	Pearly Underwing	<i>Peridroma saucia</i>	7	7	7 May	21 Sep
73.327	Dark Sword-grass	<i>Agrotis ipsilon</i>	43	45	9 Apr	23 Oct



A late instar Convolvulus Hawk-moth larva was found on the Fen boardwalk at Burton Mere Wetlands RSPB on 15th August.

Graham Jones

One of the Humming-bird Hawk-moth records was a larva, found on hedge bedstraw at Whaley Bridge on 24th August.

A Silver Y larva, was collected in Waverton on 8th August. Another three larvae were found on ivy-leaved toadflax in Latchford on 10th August. Two more were recorded on nettles, together with a pupa, in Whaley Bridge on 22nd August.

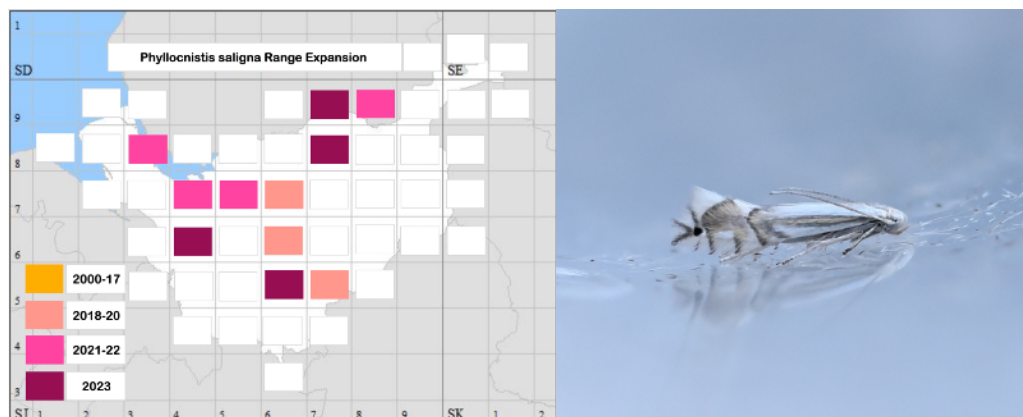
Increased Distribution in 2023

Several species were new to four or more hectads in 2023.

The apparent spread of some of these species across the county is illustrated in this set of maps. It is not easy to state whether it is indicative of a trend to wider geographical distribution or simply a consequence of increased recording.

15.090 *Phyllocnistis saligna* (Zeller, 1839)

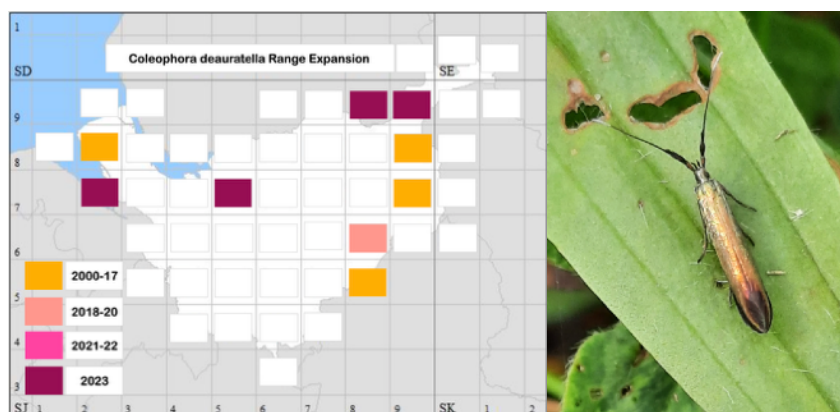
Leaf mines were discovered in Hargrave, Ravensmoor, Mobberley, Partington and Sinderland Brook.



Paul Miller

37.046 *Coleophora deauratella* (Lienig & Zeller, 1846)

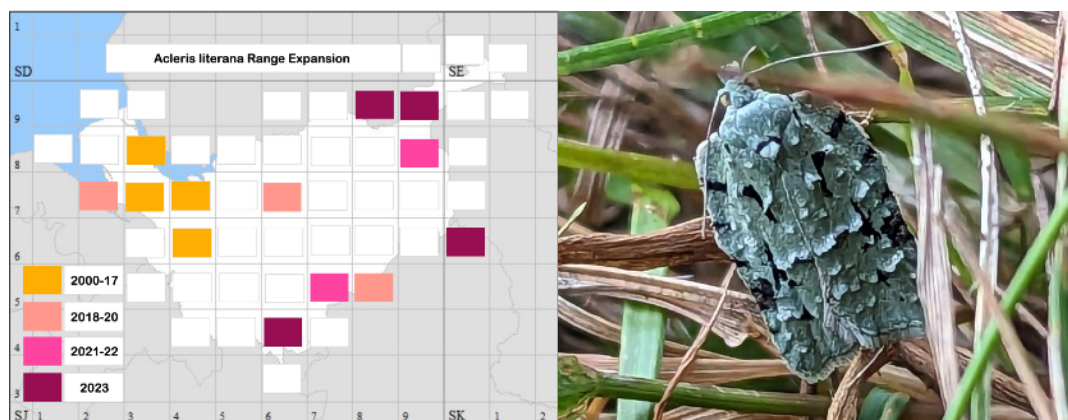
The species was observed at Little Neston, Kingsley, Sale and Stalybridge.



David Walsh

49.087 *Acleris literana* ((Linnaeus, 1758)

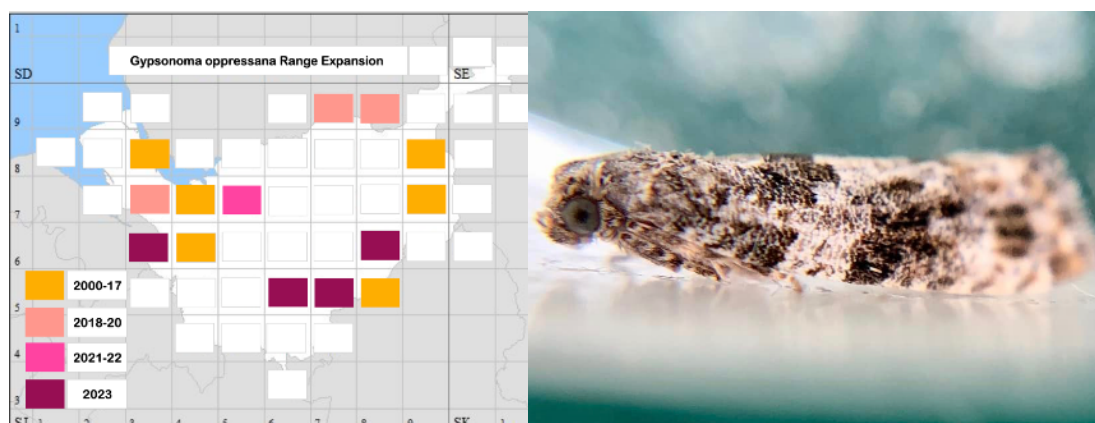
No stranger to the west of the county, it has now been seen in the south and east at Hatherton, Sale, Romiley and Wildboarclough.



Alida Heston

49.280 *Gypsonoma oppressana* (Treitschke, 1835)

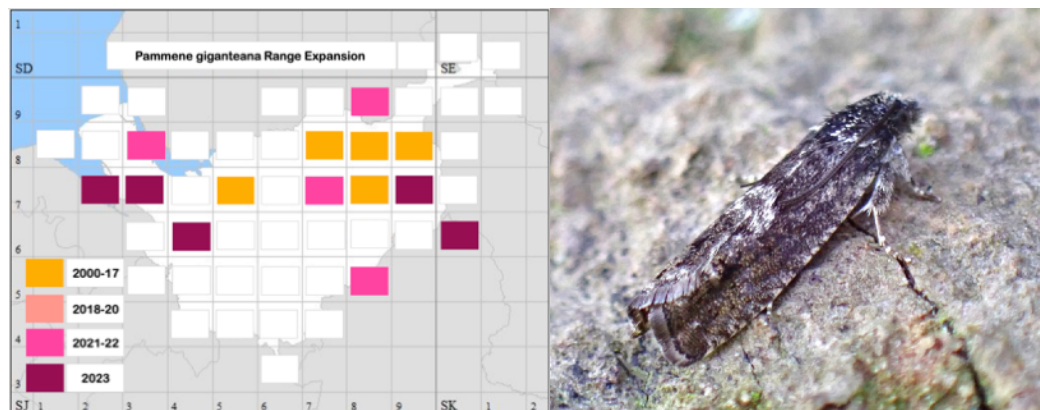
Adult moths at Blacon and at Wistaston, larvae at Haslington and Congleton.



John Rayner

49.362 *Pammene giganteana* ((Peyerimhoff, 1863))

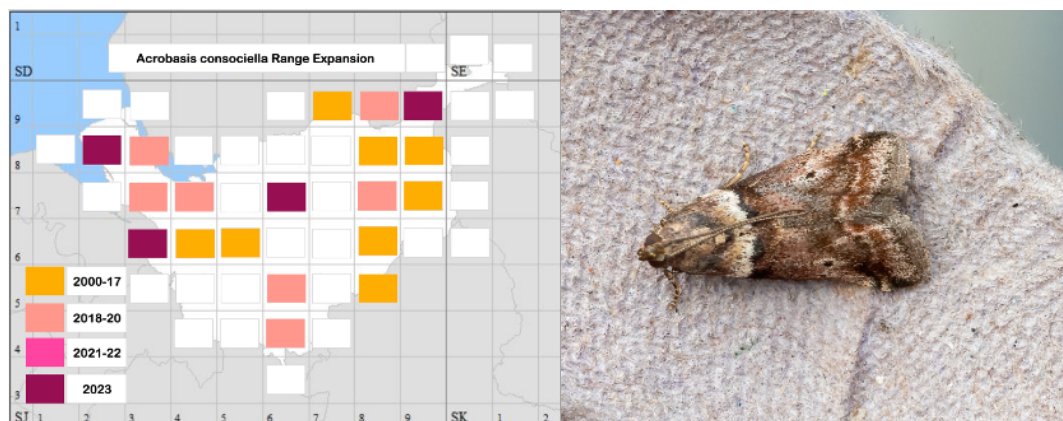
New at Burton Mere, Little Neston, Great Sutton, Chester, Adlington and Wildboardclough. The increase is probably due to the use of pheromone lures.



Graham Jones

62.038 *Acrobasis consociella* (Hübner, [1813])

Adults at Heswall, Blacon and Ashton's Flash, Northwich and a larva at Reddish Vale.



Dean Davies

70.036 Maiden's Blush *Cyclophora punctaria* (Linnaeus, 1758)

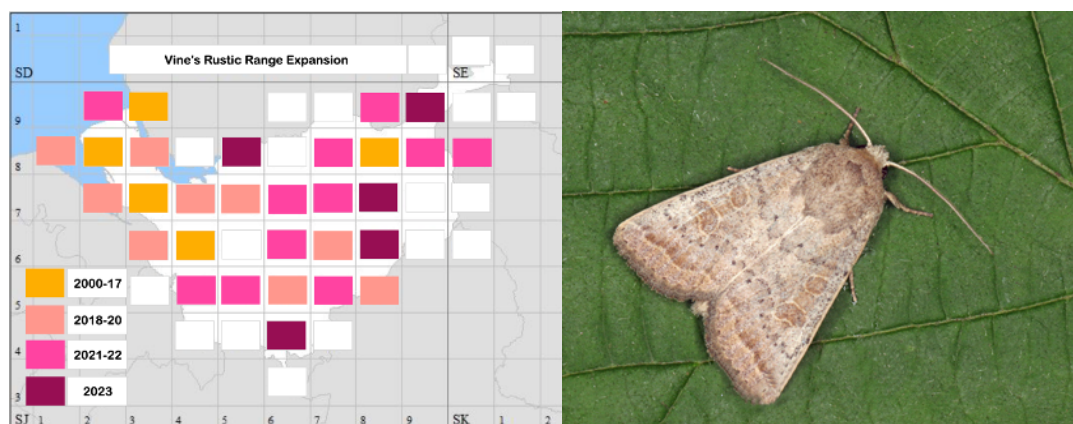
Since 2017, more have been recorded than in the last century, the range being extended by sightings at Ashton's Flash (Northwich), Mobberley, Sale and Mottram-in-Longendale.



Bill Underwood

73.099 Vine's Rustic *Hoplodrina ambigua* ([Denis & Schiffermüller], 1775)

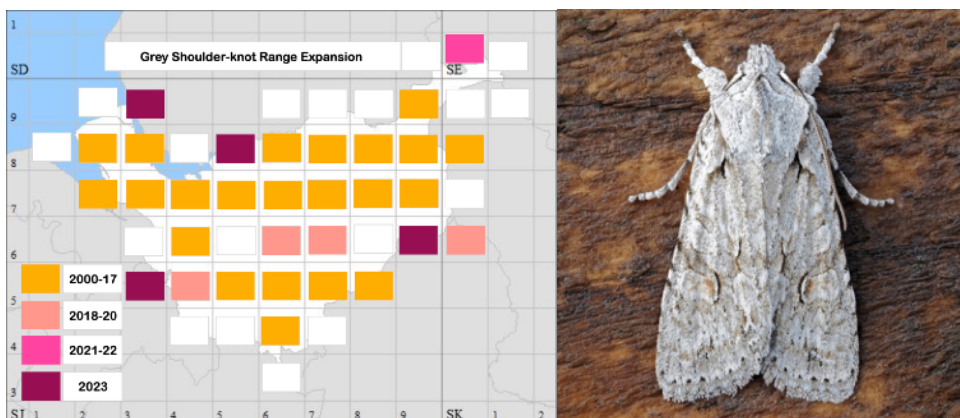
The species continues to push into the north-east of Cheshire.



Roy Hilton

73.202 Grey Shoulder-knot *Lithophane ornitopus* (Hufnagel, 1766)

There are nearly a thousand Cheshire records, but the sightings in 2023 at Wallasey, Poulton, Norton Priory (Runcorn) and a larva at Bosley were the first for their respective 10km squares.



Clive Jones

Errata from previous Moth Reports

- There was some debate about the identification of Cream Bordered Green Pea, recorded at Flaxmere in 2022. On balance, it was considered safer to aggregate the record.
- In the report in 2021, the stated six records at Wynbunbury of 70.002 **Purple-bordered Gold** *Idaea muricata* 2022. should have been only one.

Answer to the question on page 2: Willow Beauty (*Peribatodes rhomboidaria*).

Cheshire Moth Recorders for 2023

Many recorders have submitted records not in tabular form, but instead using one of the apps, which leave a choice to the recorder about how they wish their names to appear. Consequently, it has proved convenient to give recorders' names in two lists, below. Some recorders' names appear in both lists!

Records submitted as tables

Chloe Aldridge **CA**, B Allen, Hilary J Ash, Rebecca Ashworth, Peter F Atherton, Ralph Atherton, Sarah Atherton, Shane Atkinson, Christian Baars, Phil Bahan, Dave Bancroft, Chris Bastock, Dave Bedford **DB**, Steven Bell, Bill Bellamy **BB**, Mel Bellingham **MBe**, Robert Benson, Roger Benson **RB**, Andy Bissitt, Robert Bithell, Mike Boothman **MB**, Alison & Julian Borrow **A&JB**, R & X Borrow, Helen Bradshaw, Paul Brewster **PB**, Colin Brooks **CB**, Simon Browne **SBr**, Sue D Budd, Andrew Charlton, Julian H Clarke, Helen Coan **HC**, Stephen P Collins, Christine Conway, David A Cookson, Roger Cope **RC**, Brian Cornelius, Sheila Coverdale, Iona Cowell, Carly Jo Curbishley **CJC**, Geoff Curtis, Kerry Dainty, Mike Dale **MD**, Muriel H Dale **MHD**, Mervyn Daniel, Dean Davies **DD**, John David Davies, Jennifer Dayananda **JD**, Roger L H Dennis, S Dick, Leanna Dixon, Clive Donaldson **CD**, Nigel Earp **NE**, D Edwards, Steve and Janine Edwards **S&JE**, Andrew Emmerson **AE**, Shane P Farrell, Andrew Firth, Eric Fletcher, Judith Franklin, R Froud, Ian Gamble **IG**, David George, Heather & Les Green, Paul Griffiths, Sam Grundy, Les and Marian Hall **L&MH**, Tim & Elma Halliday **T&EH**, A Handford, Julia Harding, Grace C Hardy, Lirio Hardy, Peter B Hardy, Christian Heintzen **CHe**, Sue Heintzen **SHe**, Alida Heston **AH**, Jane E Hewitt, P F Hillyer, Roy Hilton **RH**, Steve H Hind **SHH**, Elizabeth Hollinshead, Mike Holmes **MH**, Steve W Holmes **SWH**, Paul Hopkins **PH**, Sharon Hopkinson **SHo**, Kate Hughes **KH**, Andy Ingham **AI**, John Jakeman **JJ**, Gill Jakeman, Dave James, Andrew Jennings-Giles, Mandy Jervis & Glyn Owen **MJ&GO**, Huw John **HJ**, Paul Johnston **PJ**, Clive Jones **CJ**, Ed Spark Jones **ESJ**, Graham Jones **GJ**, Meriel Jones, Peter Kelly, K Kelton, Chris Knibbs **CK**, Frauke Knittel, P S Lennon, Angela M Lidgett, Julie Lightfoot, Adam Linnet, Ted Lock **TL**, Roy Lowry **RL**, Jeanette & Dave Maddy **DJM**, Sandra Massey **SM**, Richard May, Jane Michael, Paul Miller **PM**, J Mortazavi, Anita Mulligan, Paul Mulligan, Natasha Murwill, Alex Neal **AN**, Amira Nuseibeh, Tony R Parker, Kevin Peace **KP**, Mike Perchard, Toby Pritchard, P Putwain, Paul Quigley, H Radford, John W Rayner **JWR**, Andrew Read, Ian Reedman, Mike & Ann Ribbands, David Robinson **DR**, Ian James Robinson, Paul Round **PR**, Richard A Rowlandson, Stephen Ryder, Colin Schofield **CS**, Angie Seymour **AS**, John P Shaughnessy **JPS**, Margaret Sixsmith **MSi**, Dave R Skingsley, Ben Smart **BS**, Peter Smith, Tom Smith, Richard Speechley, Martyn Stanyer **MS**, Jack H Swan **JHS**, Dave Taylor **DT**, Charles Thompson, Jenni Tibbets, David Tomlinson, Geoff Topp, Joanna Trampnow, Jonathan Tugwood, Bill Underwood **BU**, Tricia Wain **TW**, David Walsh **DW**, Tim Ward **TW**, A Ward, Ron Warne, Clive Washington, Jenny Whiteside, Michael R Whiteside **MRW**, Roger Wilkinson **RW**, Sarah-Jayne Wood, Michael Youngman, Lisa -.

Records submitted in Apps

ahappyyak, alambie, alanbu52, Alex, ali, amiranuseibeh, kayleighxx, ancientcurse, annelith, AnnieT39, annme, Anon, bekkie60, ben456ist, benri, blaize21, blue8sky, bp83, Brad, brenbee5, cactuschris, cassop, cedric-dawnhawk, chm1ljm, chrisuns, cled **CL**, cybrow59, DAE, dave783nwe, ddnt, deryckb, donscot, ea2022, ellisforward, emmsielou, epariser, fatherofgrifton, fox-glo-ves, ftwentytwo, funkiestsaturn, getawaydriver, heatherdc, helench-f, highpeak, iantheo, jackson-bird, jdm62, jenbob89, jolucky, jond5216, jonnet, ju2711, jules69, katiensp, kaydenlaam, kjf **KJF**, leahgilmol, lemonukuk, liz_o, louiset, mako690, masher75, mazb, mbulpitt, mikemp, Milo, miss-hayz, moel_arthur, mouseear, mousesparrow, mrmacha, Nan, naturelord1107, nayhall5, neverfellredbird, Nkima56, nomadjack, nyctibiidae, oldjolio, phytospete, pmcg, pre_phylloxera, primrose6, rach67, raingirl, redgrave, rewildgardendesign, rhyswhy, rn240, robobrien, rowley12, sacheshire, scottoucantango, sd_75 **SDS**, selattynexplorer, snoyce, socialseas, spuddie, starnosemole, sturuss, sw99, tangshuttfriend, tanyac1234, tbro82, thebradleyclan22, thewiz1970, tim2ditch, tom_123, tracey1712, vampyvixen06, whirley, willriding, willus, Wirral98765, xamin, xirei, xxwillxx, yerbua, zoochris.

Carole Adshead, Gina Allnatt, Matt Ames, Kevin Arbuckle, Kate Ashbrook, Sarah Atherton, Phil Bahan, Joe Bailey, Phil Baldwin, Jay Barber, Judith Barnard, Matt Bartlett, Botany Beck, Mal Bennett, Andy Bissitt, David Bissitt, Josh Boe, Jack Booth, Peter Brash **PBr**, Paul Brewster **PB**, Sarah Bridson, Maisie Broughton, John P Bryan **JPB**, Mike Bryant, Emma Burgess, Sue Byron, Jacqueline Carter, Martin Chadwick, Ben Chaffey, Nats Chapman, Becca Chu, Marjorie Coles, Anthony Cook **ACo**, Gary Copitch, Brian Cornelius, Kelly Corvus, Liz Coupe, L Coward, Iona Cowell, John Crosse, Carly

Jo Curbishley **CJC**, Rachael Darcie, Harry Davies, Michael Davies, Sam R Davies, Erin Dawber, Catherine Dee, Clair Dempsey, Leanna Dixon, Mark Dixon, Steph Dolben, Elina-Marielle Doss, Martin Downes, Iain Dykes, Ben Dymond, June Edgar, Andrew Emmerson **AE**, S J F Jarvis, Kathryn Fegan, Helen Field, N Field, Alysia Fjodor, Neil Forbes, Keith Fowler, Peter Fulcher, Simon Gabriel, B Gardener, Ted Gaten, Tony Gilbert, John Gilbody, Sam Giruzis, Hannah Goddin, Andrew Green, Erika Green, Neil Gregory, Martin Grimes, Elaine Groom, Sheelagh Halsey, Toby Hart, Luke Hartley, Sean Hartnett, Sheena Hatton **SHa**, Claire Healey, Gary Hedges, Waldemar Heise, Mandy Henshall **MHe**, Dave Higginson-Tranter, Keith Hiller, Karen Hodgkins, Andy Ingham **AI**, Terry Instone, Gill Jakeman, Vicki Jarvis, John Silloth, Jon Wainwright, Dave Jones, Janet R Jones, Jen Keavey, Tom Kenwright, Stuart Kilpatrick, Nick Kirkham, Charles Knowles, Andrew Lamb, Andrew Law, Helen Lawes, Alex Lees, Andy Leigh, Kay Leigh, Tyler Lockwood, Helen Longmore, Roy Lowry **RL**, Sheila Malimbe **SM**, Susan Marley, Antony Marriott, John P Martin, Sophie Mathews, Lorraine McKee, Steve J McWilliam, S J McWilliam, S Marley, Barry Mills, P W Milton, Joseph Moore, Jon Mortin, Diana Moss, Nick Mott, Iain Mottram, Ken Nicholson, Susan Noyce, Robert O'Brien, Mark O'Sullivan, Keith Ogden, Jack Oldham, Steve A Orridge, John Owen, Steve Owen, Anna Paakkonen, Katherine Pagett, John Parker, Suzanne Parrott, Graham Parry, Ruth Penaluna, Michael Pentland, Mike Perchard, Sharon Percival, Nicholas Pomiankowski, Heather Price, Paul Quigley, Jane Radley, Abby Reeder, Mike & Ann Ribbands, Anne-Marie Richard, Jane Roberts, John Roberts, Karl Roberts, Martin Roberts, Chris Robinson, Jeremy Rogers, Julie Rogers, Paul Round **PR**, Les Rowe, G Hedges, S Suttill, Jodi Sandford, Andrea Sawiak, ReWild Your School, David Shenton, Jan Sheppard, Osian Shirley, John Silloth, Philippa Smith, W Spellman, Stephen Suttill, Amy Thomas, M Elizabeth Thornton, Lisa Thwaites, Simon Van Toller, Geoff Topp, Joanna Trampnow, Janet Turnbull, Loick Tyson, jackie vigilanti, Kathleen Wainwright, Gary Walton, Paul Walton, Yan Wang, Tim Webster, Tara Weeks, Robert Whitehouse, Morgan Whittaker, Nif Wilkinson, Ian Williams, Jerry Willow, S Woollam, Jeremy Worrell, Charley Zanmato.

Acknowledgements

The author would like to thank everyone who submitted records and photographs to be included into this report. Thanks also to all those who have helped with species identification and record verification through the year.