

CHESHIRE (VICE COUNTY 58)

MOTH REPORT FOR 2024



Radford's Flame Shoulder
Rob Bithell

Author: David Maddy

Date: May 2025

Introduction

Every year, all submitted moth records are verified, before they can be accepted into the Cheshire database. The verification process takes place according to a set of rules, which have been designed to protect the integrity of the database. The rules are established mainly by national guidelines, but there are a few local “tweaks” to recognise the local Cheshire environment.

Species are categorised according to their rarity and the likely difficulty in reaching a correct identification. As a result, evidence is required in support of records for some species. The evidence normally takes the form of a good photograph, showing distinguishing features, but records can also be accepted if the recorder has previously demonstrated familiarity with a species, for example. For some species, extra evidence is required, such as the results of dissection, or an indication that the moth has been bred through from a larva taken from the appropriate foodplant.

The dates of records of adult moths are also tested, against the normal flight season for their species, as a further assurance that the record is good.

Records are submitted in a number of different ways. The most common method is to complete the standard template spreadsheet, and send the file as an attachment by email to the County Moth Recorder. Increasingly, though, “apps” such as iRecord or iNaturalist offer an alternative.

Whichever method is used, the verification is carried out by a small group of volunteers, who help to share the burden of assessing that each record meets the criteria for being accepted into the county database. Their work is very much appreciated; this report would not have been possible without it!

In this report:

- A list is provided, itemising all micro-moth species that were recorded three or fewer times during the year as well as all macro-moth species that were recorded four or fewer times.
- The area of VC58 covers at least a part of 49 “hectads” - grid-reference squares of 10km by 10km. A total of 494 species were recorded for the first time in their respective hectads in 2024. These are listed for each hectad, in turn.
- The increased range of thirteen species across the county is illustrated, some with maps.
- Fourteen migrant species - those species that have flown or been transported by air-streams from origins outside of the British Isles - were recorded in 2024 in Cheshire and are tabulated.
- Until recently, *Pammene giganteana* had been regarded as scarce in Cheshire. Steve Hind has documented his work to establish a truer picture of the distribution of the species in the county.

The table below shows the number of species and records in Cheshire over the decade from 2015 to 2024. At 1,020, the number of different species recorded in 2024 almost matched the total from the previous year. The number of micro-moth species (563) recorded in the county showed a slight reduction compared to the figure from 2023, but the number of macro-moth species (457) just exceeded the 2023 total.

Year	Species			Records		
	Micro's	Macro's	Total	Micro's	Macro's	Total
2015	490	420	910	17,091	47,901	64,992
2016	519	411	930	21,411	44,543	65,954
2017	526	422	948	21,340	51,567	72,907
2018	543	427	970	24,623	54,755	79,378
2019	546	416	962	23,359	48,971	72,330
2020	561	434	995	26,817	64,682	91,499
2021	527	435	962	26,228	75,449	101,677
2022	552	460	1012	29,454	79,126	108,580
2023	570	453	1023	31,928	73,374	105,302
2024	563	457	1020	29,397	70,967	100,364

The total number of records submitted in 2024 remained above 100,000, but both the number of macro-moths (70,967) and micro-moths (29,397) were down on recent years.

Twenty-one species of macro-moth that were recorded in 2023 did not appear again in 2024.

Conversely, twenty-five species are on the lists for 2024 that were not seen in Cheshire in 2023.

Macros in 2023 but not 2024.	Macros in 2024 but not 2023.
Red-tipped Clearwing ; Small Argent & Sable ; Sloe Pug ; Valerian Pug ; Shaded Pug ; Clouded Magpie ; V-Moth ; Rannoch Looper ; Lobster Moth ; Gypsy Moth ; Four-spotted Footman ; Dewick's Plusia ; Chamomile Shark ; Butterbur ; Twin-spotted Wainscot ; Crescent Striped ; Dusky-lemon Sallow ; Marbled Coronet ; Portland Moth ; Double Dart ; Ashworth's Rustic.	Oak Lutestring ; Small Eggar ; Purple-bordered Gold ; Birch Mocha ; Barred Rivulet ; Bilberry Pug ; Haworth's Pug ; Larch Pug ; Pimpinel Pug ; Triple-spotted Pug ; Pale Oak Beauty ; Brussels Lace ; Grass Emerald ; Wood Tiger ; Dark Crimson Underwing ; Small Mottled Willow ; Crinan Ear ; Lyme Grass ; Brown-veined Wainscot ; Large Nutmeg ; Lesser-spotted Pinion ; Northern Drab ; Silver Cloud ; L-album Wainscot ; Radford's Flame Shoulder.

Weather Summary for 2024

January started the year with a continuation of the rainy, blustery but warm conditions with which the previous year had ended. Arctic northerlies then brought cold winds and sub-zero temperatures, but these were followed by strong Atlantic winds and squally rain.

The rain persisted into February, but temperatures were unusually warm. The first widespread frost of the month came as late as 24th February, but there was no sustained fall back to normal temperatures for the time of year.

Mild temperatures were retained throughout March, but winds were sometimes strong and there was plentiful rainfall. Low pressure remained in charge at the beginning of April, which continued with intermittent rain of varying intensity. A northerly wind bringing Arctic air made it cooler than the average for the month. May was wet, although average temperatures increased to levels more typical for the late Spring.

High pressure swung in for the first day of June, but subsequent rain dispelled any thoughts of an early warm summer. By the middle of the month, northerly winds and rain kept the overnight temperatures very low for the time of year. Then, just as conditions settled by the summer solstice and hovered around normal levels for June, there was a further reduction in overnight temperatures at the end of the month.

Little change occurred in early July, but warmer days became more frequent as the month progressed. There was even talk of a heatwave¹, but the threshold for the county was not quite reached for the necessary three consecutive days.

August began warmly, but the weather was changeable. Storms brought strong winds and heavy rain in the second half of the month.

An arctic air mass over the UK in the middle of September brought unmistakably autumnal weather, following a few milder weeks that were more typical of late summer.

Conditions were drier at the start of October than the very wet end to the previous month, but the weather became unsettled in the third week, with heavy rain and gusty wind.

November started dry, but later saw some snow, then heavy storms heralded December. The year ended with showers, with mild overnight temperatures.

¹ The heatwave threshold for Cheshire is 26 degrees C, whereas that for the Wirral is one degree lower! [Met Office “What is a heatwave?”].

The highest number of different species recorded by light trapping in 2024 occurred in the month of July, reversing the swing in 2023 to June. At 588 species, though, the total fell noticeably short of the 625 recorded in July 2022 and the 611 recorded in June 2023.

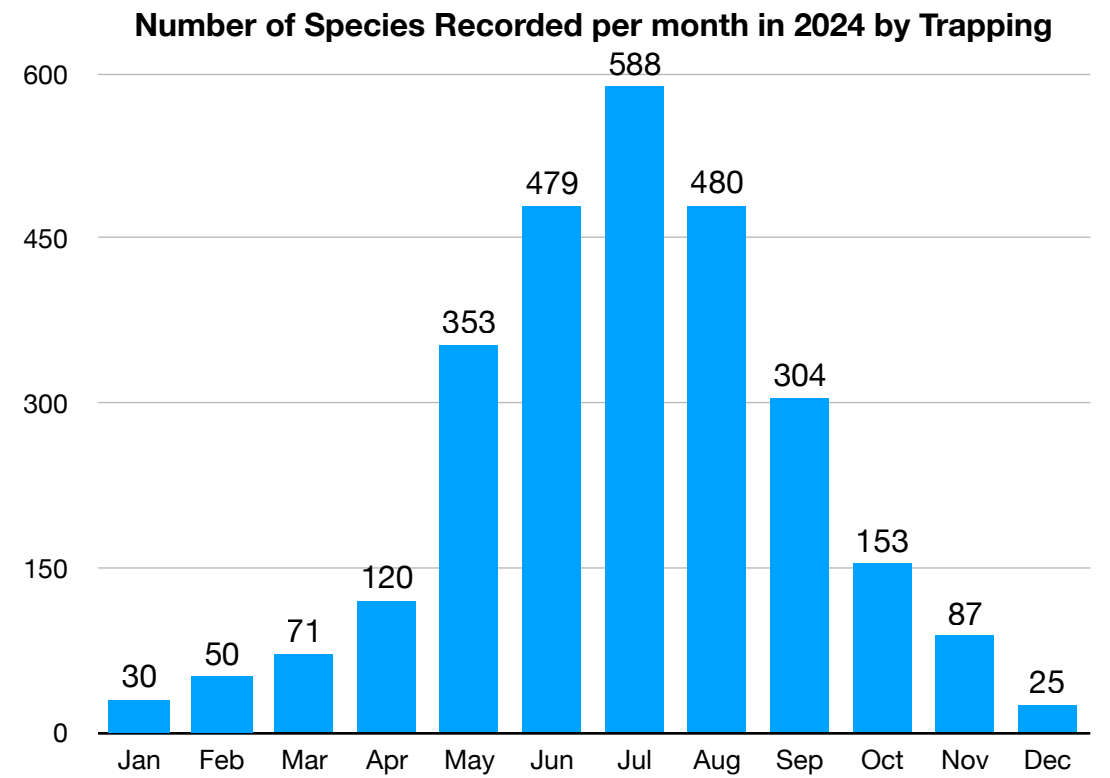


Figure 1: Graph, showing the number of species trapped per month in 2024.

Least-recorded Species in 2024

As always, time and effort dictate that this report cannot be a complete analysis of the year's records; it does however itemise all micro-moth species that were recorded three or fewer times during the year as well as all macro-moth species that were recorded four or fewer times.

Throughout what follows, header information relating to each species appears thus:

3.004 Gold Swift *Hepialus hecta* (Linnaeus, 1758)

Which, reading left to right detail:

- Agassiz, Beavan & Heckford species number
- Species' vernacular name
- Species' taxonomic name
- Species' Author(s)

2.004 Eriocrania sparrmannella (Bosc, 1791)



One adult moth at Rake Lane, Helsby on 5th April (TS).

Tom Smith

2.005 Eriocrania salopiella (Stainton, 1854)

A mine showing wiry loops of frass on birch at Knutsford Heath on 29th September (TW).

2.006 Eriocrania cicatricella (Zetterstedt, 1839)

Mines on birch at Mobberley on 27th April and at Lower Withington on 30th April (SHH).

2.007 Eriocrania semipurpurella (Stephens, 1835)

One at Carleton Road, Higher Poynton on 5th April (SHH).

4.005 Stigmella betulicola (Stainton, 1856)

A larva at Common Lane, Waverton on 6th August (HC).

4.024 Stigmella magdalenae (Klimesch, 1950)

A mine on rowan at Longdendale on 29th July (SHH) and another at Brookhouse Moss on 27th October (TW).

4.036 Stigmella myrtillella (Stainton, 1857)

Mines on bilberry at Kerridge Hill on 13th September and at Macclesfield Forest on 17th September (SHH).

4.039 *Stigmella trimaculella* (Haworth, 1828)

At least six mines, one tenanted, on poplar at Carrington on 21st September (SHH), one mine on Lombardy poplar at Westy Point on 27th October (SHH) and several mines on poplar at Guilden Sutton on 15th October (HJ).

4.040 *Stigmella assimilella* (Zeller, 1848)

A mine on aspen at Westy on 27th October (SHH).

4.041 *Stigmella sorbi* (Stainton, 1861)

A mine on rowan at Alderley Park on 22nd June (TW).

4.044 *Stigmella continuella* (Stainton, 1856)

Three mines on birch at Knutsford Heath on 29th September (TW).

4.051 *Stigmella poterii* (Stainton, 1857)



Three mines on tormentil at Kerridge Hill on 13th September (SHH) and one at Kerridge Hill on 19th September (AE). These were the first Cheshire records since 2009.

Steve Hind

4.060 *Stigmella ruficapitella* (Haworth, 1828)

Adult moths on 19th, 24th and 29th July, all at Linley Lane, Alsager (MD).

4.063 *Stigmella roborella* (Johansson, 1971)

Two larvae on oak at Holford Moss on 19th October (TW).

4.074 *Etainia sericopeza* (Zeller, 1839)

One adult at Highfield Road, Ellesmere Port on 19th July (PMo). Also, two mines at Marbury Country Park on 24th August (CHy) and several others at Chester Road, Helsby on 27th August (MJ&GO).

4.075 *Etainia louisella* (Sircom, 1849)

A mine on field maple at Ashton's Flashes, Northwich on 21st August (CHy).

4.085 *Ectoedemia argyropeza* (Zeller, 1839)

Several mines on fallen aspen leaves at Westy Point on 27th October and more at Alderley Edge on 9th November (SHH).

4.091 *Ectoedemia heringi* (Toll, 1934)

Tenanted mines on oak at Harrop Wood, Rainow on 21st October (SHH) and another at Storeton on 25th October (HJ). Also, three on oak at The Mosses on 30th October (TW).

4.094 *Ectoedemia angulifasciella* (Stainton, 1849)

Mines on rose at Marton on 4th October and at Harrop Brook on 21st October (SHH).

6.003 *Heliozela sericiella* (Haworth, 1828)

One adult moth, off gorse below oak, at Whitley Reed at the edge of Stretton Moss on 24th April (SHH).

6.005 *Heliozela hammoniella* (Sorhagen, 1885)

Mines on birch at Longdendale on 29th July (SHH).

7.009 *Cauchas fibulella* ([Denis & Schiffermüller], 1775)

One on Germander Speedwell on 25th May (SBr, AE, SHH) and another on 8th June (AE et al), both at Danes Moss. These were the first records of this species in Cheshire since 1963.

8.001 *Incurvaria pectinea* (Haworth, 1828)

A quantity of mines on birch sapling at Danes Moss on 25th May (SBr, AE, SHH).

8.005 *Phylloporia bistrigella* (Haworth, 1828)

An adult at Linley Lane, Alsager on 2nd June (MD) and two mines on birch at Longdendale on 29th July (SHH).

9.006 *Lampronia fuscata* (Tengström, 1848)

One at Neumann's and Ashton's Flashes on 13th May (CHy). This was the first record in Cheshire since 1976.



10.002 *Tischeria dodonaea* (Stainton, 1858)

Two larvae on oak at Holford Moss on 19th October (TW).

Tim Ward

11.002 *Narycia duplicella* (Goeze, 1783)

Two cases on 15th March at Northern Moor, Sale (BS) and an adult at Linley Lane, Alsager on 11th June (MD).

12.017 *Nemapogon koenigi* (Karsholt & Nielsen, 1976)

Four to a VES lure at Witchcote Wood, Knutsford on 2nd June (SHH). This was only the second record in Cheshire; the first was in the 19th century.

12.019 *Nemapogon ruricolella* (Stainton, 1849)

One at Holly Court, Helsby on 24th June (MJ&GO). There are only two previous Cheshire records, one from 1947 at Disley, the other at Bromborough in 2021.

12.034 **Brown-dotted Clothes Moth** *Niditinea fuscella* (Linnaeus, 1758)

One at rest on oak at Jodrell Bank on 19th June (SHH).

12.039 *Monopis crocicapitella* (Clemens, 1859)

One at Bayswater Road, Wallasey on 14th July (CS).

12.047 *Psychoides verhuella* (Bruand, 1853)

Three larvae on Hart's-tongue Fern, on outside of park wall at Dunham Massey on 30th March (SHH).

14.003 *Bucculatrix maritima* (Stainton, 1851)

Two at Wellington Close, Ellesmere Port on 7th September (HJ).

14.008 *Bucculatrix cidarella* (Zeller, 1839)

Three mines on alder at Knutsford on 11th October (SHH, TW).

15.008 *Caloptilia alchimiella* (Scopoli, 1763)

Seven at Swanscoe Lane, Higher Hurdsfield on 18th July and one at Mobberley Lane, Knutsford on the next day (SHH).

15.009 *Caloptilia robustella* (Jäckh, 1972)

One at Badger Bait, Little Neston on 19th July (GJ) and three at Carleton Road, Higher Poynton on 31st July (SHH).

15.012 *Caloptilia semifascia* (Haworth, 1828)

One at Kingsley on 20th July (PM), one at Gee Cross on 23rd July (AM) and a mine (ex Field Maple) at Dark Lane, Carrington Moss on 29th September (SHH). The adult emerged on 3rd November. These three records follow the only two previous ones of the species in Cheshire, from 2022 at Bromborough and 2023 at Alsager.



Paul Miller

15.017 *Calybites phasianipennella* (Hübner, [1813])

One at Linley Lane, Alsager on 13th August (MD).

15.025 *Parornix betulae* (Stainton, 1854)

One at Mobberley Lane, Knutsford on 19th July (SHH).

15.030 *Parornix scoticella* (Stainton, 1850)

A mine on rowan at Wildboarclough on 29th August (SHH) and mines on apple at Mickle Trafford on 11th October (HJ).

15.033 *Parornix torquillella* (Zeller, 1850)

Mines at Lapwing Hall, Chelford on 17th August (AE) and on blackthorn at Alderley Edge on 25th September (SHH).

15.046 *Phyllonorycter blancardella* (Fabricius, 1781)

Mines on apple at Alderley Edge on 25th September and at Carleton Road, Higher Poynton on 10th October (SHH).

15.048 *Phyllonorycter junoniella* (Zeller, 1846)

A mine on cowberry at Longdendale on 29th July (SHH).

15.051 *Phyllonorycter lantanella* (Schränk, 1802)

Mines on viburnum at Little Stanney on 14th April (HJ), at Knowle Close, Great Sutton on 7th November (MBe) and at Otterspool, Romiley, Stockport on 25th November (SHH).

15.054 *Phyllonorycter viminiella* (Sircom, 1848)

Pupal exuviae on grey willow at Holford Moss on 19th October (TW), two mines ex willow at Westy Point on 27th October, which emerged indoors on 15th and 25th March 2025 and seven at Wilmslow on 9th November which emerged indoors between 16th and 24th March 2025 (SHH).

15.056 *Phyllonorycter salicicolella* (Sircom, 1848)

A mine ex willow at Westy Point on 27th October, which emerged indoors 18th March 2025 (SHH).

15.057 *Phyllonorycter dubitella* (Herrich-Schäffer, 1855)

A mine off willow at Westy Point on 27th October (SHH). The adult was bred.

15.059 *Phyllonorycter cavella* (Zeller, 1846)

A mine on birch at Alderley Park on 8th November (TW). The larva occupied a flimsy cocoon.

15.073 *Phyllonorycter lautella* (Zeller, 1846)

About ten mines on oak saplings at Westy on 28th September (SHH) and three mines on seedling oak at Alderley Park on 8th November (TW).

15.079 *Phyllonorycter stettinensis* (Nicelli, 1852)

Several mines on alder, at Irby on 23rd October (HJ) and at Westy Point on 27th October (SHH).

15.082 *Phyllonorycter klemannella* (Fabricius, 1781)

A mine at Poynton Coppice on 27th September (AE).

16.004 **Spindle Ermine** *Yponomeuta cagnagella* (Hübner, [1813])

Larvae in five separate webs on a spindle bush at Newton Lane, Tattenhall on 11th May (KH) and several more at Ferma Lane, Great Barrow on 12th June (ROB).

16.014 *Pseudoswammerdamia combinella* (Hübner, 1786)

One at Rake Lane, Helsby on 20th June (TS).

16.019 *Paraswammerdamia albicapitella* (Scharfenberg, 1805)

One at Common Lane, Waverton on 23rd June (HC) and another at Meadowside, Burwardsley on 25th June (MRW).

16.024 *Ocnerostoma friesei* (Svensson, 1966)

A female on 5th May and two males on 31st July at Linley Lane, Alsager (MD).

17.006 *Ypsolopha horridella* (Treitschke, 1835)

One at Newton Lane, Tattenhall on 2nd August (KH) and one at Birchall Moss, Hatherton on 25th August (CK). The first record of this species in Cheshire was documented in 1996; the three other previous sightings were in 2019 and 2020.



Kate Hughes

17.009 *Ypsolopha sylvella* (Linnaeus, 1767)

One at Linley Lane, Alsager on 3rd September (MD) and another at Thornton Avenue, Higher Bebington on 6th September (CD).

20.015 *Argyresthia curvella* (Linnaeus, 1761)

Two adults off crab apple at Higher Hursfield on 12th June (SHH).

20.017 *Argyresthia glaucinella* Zeller, 1839

One at Carleton Road, Higher Poynton on 26th June (SHH) and one at Birchall Moss, Hatherton on 9th July (CK).

20.018 *Argyresthia spinosella* (Stainton, 1849)

One at Birchall Moss, Hatherton on 15th July (CK).

20.024 *Argyresthia semitestacella* (Curtis, 1833)

One at Dunham Massey, Scout Camp on 24th July (SHH).

24.001 *Bedellia somnulentella* (Zeller, 1847)

Five mines on bindweed at Dark Lane, Carrington Moss on 29th September (SHH).

27.001 *Oegoconia quadripuncta* (Haworth, 1828)

One at Mobberley Lane, Knutsford on 19th July (SHH), one on 29th July and another two days later at Linley Lane, Alsager (MD).

28.004 *Denisia similella* (Hübner, 1796)

One adult off gorse at Kettleshulme on 26th June (SHH) and one at Midgley Lane, Wildboarclough on 19th July (A&JB).

29.002 *Diurnea lipsiella* ([Denis & Schiffermüller], 1775)

One at Lower Swineshaw, Stalybridge on 24th October (DW).



32.010 *Agonopterix conterminella* (Zeller, 1839)

One at Swallows Wood, Hollingworth on 31st July (CHe, DW).

Christian Heintzen

32.019 *Agonopterix ciliella* (Stainton, 1849)

One at Meadowside, Burwardsley on 24th July (MRW).

32.032 *Agonopterix angelicella* (Hübner, [1813])

One at Swallows Wood, Hollingworth on 17th July (CHe).

32.040 *Depressaria ultimella* (Stainton, 1849)

One on 7th May and two more, three days later, at Common Lane, Waverton (HC).

35.011 *Anacamptis populella* (Clerck, 1759)

A larva, found in a spinning on *Salix* sp: at Crewe on 18th May. The larva emerged 16th June (JPB). Another, at Danes Moss on 25th May, emerged on 18th June (SHH).

35.012 *Anacamptis blattariella* (Hübner, 1796)

Two, one a female, at Linley Lane, Alsager on 31st July (MD).

35.0191 *Anarsia innoxia* (Gegersen & Karsholt, 2017)

One at Badger Bait, Little Neston on 19th July (GJ) - the site of a new county record for the species in 2021- and another at Manor Crescent, Tytherington on 28th July (DJM). The only other record for Cheshire was at Nantwich in 2023.

35.020 *Anarsia spartiella* (Schränk, 1802)

One at Rake Lane, Helsby on 19th July (TS).

35.036 *Chrysoesthia sexguttella* (Thunberg, 1794)

Twelve mines by the side of the pavement by the A628 at Longdendale on 29th July, and several mines on orache by a farm gate at Smithy Brow, Bollington on 13th September (SHH).

35.049 *Bryotropha similis* (Stainton, 1854)

Fifteen on 20th June and about ten on 18th July at Swanscoe Lane, Higher Hurdsfield (SHH).

35.050 *Aristotelia ericinella* (Zeller, 1839)

One at Abbots Moss on 18th July (PB) and one at Wybunbury on 7th August (JEH).

35.053 *Isophrictis striatella* ([Denis & Schiffermüller], 1775)



One at Badger Bait, Little Neston on 24th July (GJ). The only two previous records for this species in the county were both at Higher Poynton, in 2009 and in 2014.

Graham Jones

35.060 *Apodia martinii* (Duponchel, [1843])

Three at Burton Mere Wetlands RSPB (East) on 10th August (SWH).

35.066 *Monochroa tenebrella* (Hübner, [1817])

One netted amongst Sheep's Sorrel at Grotto Lane, Peover Superior on 19th June (SHH).

35.071 *Monochroa lucidella* (Stephens, 1834)

One on 13th July and another on 7th August at Shannon Close, Willaston, Nantwich (DT).

35.105 *Gelechia nigra* (Haworth, 1828)

Two at Bayswater Road, Wallasey on 8th July (CS) and one at Carleton Road, Higher Poynton on 31st July (SHH). This species was first recorded in Cheshire in 2023, at Elton.

35.109 *Scrobipalpa acuminatella* (Sircom, 1850)

A mine on creeping thistle at Wildboardclough on 29th August (SHH) and an adult moth at Shannon Close, Willaston, Nantwich on 16th October (DT).

35.146 *Teleiopsis diffinis* (Haworth, 1828)

One at Bayswater Road, Wallasey on 8th July (CS).

35.148 *Carpatolechia fugitivella* (Zeller, 1839)

Two at Birchall Moss, Hatherton on 26th June (CK) and one at Mobberley Lane, Knutsford on 19th July (SHH).

35.149 *Carpatolechia alburnella* (Zeller, 1839)

One at Verdin Close, Moulton on 18th July (PB), one at Bollin Drive, Lymm on 20th July (JB), and another at Thornton Avenue, Higher Bebington on 3rd August (CD).

35.157 *Recurvaria leucatella* (Clerck, 1759)

One at Meadowside, Burwardsley on 19th July (MRW) and, on 29th July at Chester Zoo Nature Reserve, one (PR) and three (PH) adult moths were recorded.

36.0019 *Batrachedra confusella* (Berggren, Aarvik, Huemer, Lee & Mutanen, 2022)

One at Carleton Road, Higher Poynton on 26th June (SHH).

37.012 *Coleophora limosipennella* (Duponchel, [1843])

Two cases on elm at Vicars Cross Golf Club on 24th July (HC).

37.024 *Coleophora vitisella* (Gregson, 1856)
Larvae at Bosley Cloud on 6th October (AE).

37.029 *Coleophora orbitella* (Zeller, 1849)
An adult moth at Linley Lane, Alsager on 19th July (MD) and a larva at Bosley Cloud on 6th October (AE).

37.033 *Coleophora trifolii* (Curtis, 1832)
Ten cases on yellow melilot at Anderton Nature Park on 20th July (CHy), an adult moth at Bayswater Road, Wallasey on 7th August (CS) and a larva on melilot at Westy Park on 28th September (SHH).

37.035 **Clover Case-bearer** *Coleophora alcyonipennella* (Kollar, 1832)
One at Carleton Road, Higher Poynton on 1st September (SHH).

37.044 *Coleophora discordella* (Zeller, 1849)
An adult moth at Carleton Road, Higher Poynton on 24th June and a larva on birdsfoot trefoil at Bollington on 13th September (SHH).

37.046 *Coleophora deauratella* (Lienig & Zeller, 1846)



One at Macclesfield Road, Whaley Bridge on 21st June (AS).

Angie Seymour

37.049 **Pistol Case-bearer** *Coleophora anatipennella* (Hübner, 1796)
A larva (emerged 22nd May) on lime at Vicars Cross Golf Club on 8th May (HC) and another larva at Chester Zoo Nature Reserve on 17th July (SWH).

37.050 *Coleophora albidella* ([Denis & Schiffermüller], 1775)
One at Common Lane, Waverton on 23rd June (HC) and one at Mobberley Lane, Knutsford on 19th July (SHH).

37.063 *Coleophora albicosta* (Haworth, 1828)
One at Hyde Grove, Sale on 14th May (PBH) and two at Swanscoe Lane, Higher Hurdsfield on 20th June (SHH).

37.070 *Coleophora tamesis* (Waters, 1929)
Two females at Hightree Drive, Henbury on 26th June (TW).

37.071 *Coleophora glaucicolella* (Wood, 1892)
One at Linley Lane, Alsager on 19th July (MD).

37.083 *Coleophora saxicolella* (Duponchel, [1843])

A female at Midgley Lane, Wildboarclough on 31st July (A&JB), one at Carleton Road, Higher Poynton on 5th August (SHH) and one at Common Lane, Waverton on 26th August (HC).

37.099 *Coleophora striatipennella* (Nylander [1848])

One at Carleton Road, Higher Poynton on 4th July (SHH).

37.102 *Coleophora argentula* (Stephens, 1834)

A larva on yarrow growing on a wall at Spurley Lane, Bollington on 13th September (SHH) and several cases on yarrow at Burton Marsh on the same day (HJ).

38.030 *Elachista albifrontella* (Hübner, [1817])

One at Bollinhurst Brook Valley, Lyme Handley on 16th June and three more at Werneth Low on 24th June (SHH).

38.032 *Elachista apicipunctella* (Stainton, 1849)

One at Carleton Road, Higher Poynton on 9th August (SHH).

38.039 *Elachista maculicerusella* (Bruand, 1859)

One at Rake Lane, Helsby on 14th July (TS).



Tom Smith

38.046 *Elachista albidella* Nylander, [1848]

Two at Carleton Road, Higher Poynton on 31st July (SHH).

39.002 **Apple Pith Moth** *Blastodacna atra* (Haworth, 1828)

One at Common Lane, Waverton on 18th July (HC). **A New County Record.**

40.001 *Mompha conturbatella* (Hübner, [1819])

One, off rosebay, at Werneth Low on 24th June (SHH).

40.009 *Mompha sturnipennella* (Treitschke, 1833)

Ten galls on rosebay willow herb at Winnington on 7th June and two at Ashton's Flashes, Northwich on 21st June (CHy), and an adult at Holly Court, Helsby on 18th July (MJ&GO).

41.005 *Blastobasis rebeli* (Karsholt & Sinev, 2004)

One at Saltersley Moss on 18th July and, at Bourne Street, Wilmslow, some on 24th July and three on 30th July (TL).

45.004 **Triangle Plume** *Platyptilia gonodactyla* ([Denis & Schiffermüller], 1775)

Thirteen at Higher Swineshaw, Stalybridge on 6th June (DW). One pupa collected previously on a coltsfoot leaf emerged earlier in the day, and when returned to the site, thirteen others were flying around the area of coltsfoot at dusk. One at Carleton Road, Higher Poynton on 4th July (SHH) and one at Alvanley Terrace, Frodsham on 10th August (JDD).

45.008 **Yarrow Plume** *Gillmeria pallidactyla* (Haworth, 1811)



One at Kingsley on 23rd June (PM).

Paul Miller

45.012 **Brown Plume** *Stenoptilia pterodactyla* (Linnaeus, 1761)

One at Birchall Moss, Hatherton on 13th July (CK) and another at Woodlands Drive, Chester on 19th July (AN).

45.013 **Twin-spot Plume** *Stenoptilia bipunctidactyla* (Scopoli, 1763)

One at Walkerwood Reservoir, Stalybridge on 21st June (DW) and one at Carleton Road, Higher Poynton on 14th August (SHH).

45.019 **Saxifrage Plume** *Stenoptilia millieridactyla* (Bruand, 1861)

Three at Midgley Lane, Wildboarclough on 31st July and one at Carleton Road, Higher Poynton on 10th August (SHH).

45.037 **Dusky Plume** *Oidaematophorus lithodactyla* (Treitschke, 1833)

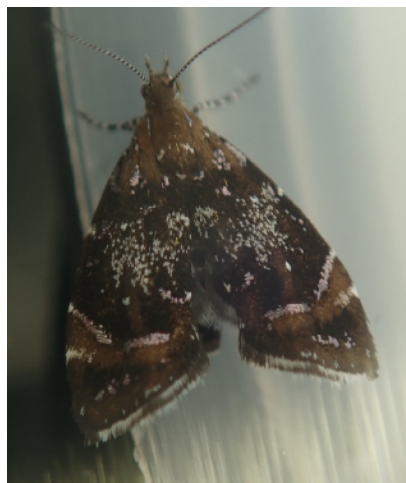
One at Carleton Road, Higher Poynton on 31st July (SHH) and six at Swallows Wood, Hollingworth on the same day (CH, DW).

47.006 *Epermenia falciformis* (Haworth, 1828)

One at Pembroke Close, Handbridge on 31st August (KP). This is only the fifth record of this species in Cheshire. The first sighting was in 2020.

48.003 *Prochoreutis sehestediana* (Fabricius, [1777])

One from wet woodland on the edge of Wybunbury Moss on 7th August (JEH). **A New County Record.**



Jane Hewitt

48.007 **Apple Leaf Skeletonizer** *Choreutis pariana* (Clerck, 1759)

One at Rutland Avenue, Lower Walton on 1st October (SJFJ).

49.005 *Epagoge grotiana* (Fabricius, 1781)

One at Meadowside, Burwardsley on 17th July (MRW).

49.021 *Ptycholomoides aeriferana* (Herrich-Schäffer, 1851)

One, from heather flowers, at The Street, Goyt Valley on 11th August (SHH, JWR).

49.023 *Pandemis cinnamomeana* (Treitschke, 1830)



One at Cedarways, Appleton Park, Warrington on 28th May (CW), one at Swanscoe Lane, Higher Hurdsfield on 20th June (SHH) and one at St John's Church, Winsford on 8th October (AH).

Alida Heston

49.033 **Bilberry Tortrix** *Aphelia viburnana* ([Denis & Schiffermüller], 1775)

One, off bilberry, at Werneth Low on 24th June (SHH), one at Midgley Lane, Wildboardclough on 19th July (A&JB) and one at Saltersley Moss on 28th July (JBi).

49.050 **Grey Tortrix** *Cnephasia stephensiana* (Doubleday, [1849])

One at Linley Lane, Alsager on 9th July (MD).

49.051 **Flax Tortrix** *Cnephasia asseclana* ([Denis & Schiffermüller], 1775)

One at Lower Withington on 23rd June and one off goat willow at Swettenham Meadows on 8th July (SHH). Also, one at Linley Lane, Alsager on the same day (MD).

49.057 *Cnephasia longana* (Haworth, 1811)

One at Linley Lane, Alsager on 31st July (MD) and one at Meadow Lane, Duckington on 4th August (FMCC).

49.063 *Acleris bergmanniana* (Linnaeus, 1758)

Two at Bayswater Road, Wallasey on 25th June (CS).

49.064 *Acleris caledoniana* (Stephens, 1852)

One off bilberry at Yarnshaw Hill on 30th July (SHH).

49.076 *Acleris cristana* ([Denis & Schiffermüller], 1775)

One at Meadowside, Burwardsley on 16th October (MRW). This is only the second record of this species in Cheshire. The first was in 2019, at Wildboardclough.

49.078 *Acleris aspersana* (Hübner, [1817])

One at Bayswater Road, Wallasey on 19th July (CS) and one at Midgley Lane, Wildboardclough on 17th August (A&JB).

49.084 *Acleris notana* (Donovan, 1806)

A larva at Jacksons Brickworks, Higher Poynton on 11th October (AE).

49.108 *Gynnidomorpha alismana* (Ragonot, 1883)

One at Linley Lane, Alsager on 31st July (MD). This is only the fifth record of this species in Cheshire. Three of the previous records were in Higher Poynton, in 1993 and 2008, the other in Burton Mere Wetlands RSPB in 2017.

49.136 *Neocoxylyis hybridella* (Hübner, [1813])

One at Carleton Road, Higher Poynton on 29th June (SHH). There is only one previous record of this species in the county, at an unknown south Cheshire location .

49.137 *Neocoxylyis dubitana* (Hübner, [1799])

One on 20th July and another on 12th August at Kingsley (PM), and one at Linley Lane, Alsager on 31st July (MD).

49.158 *Hedya ochroleucana* (Frölich, 1828)

One on 24th June and two on 26th June at Meadowside, Burwardsley (MRW).

49.159 *Hedya atropunctana* (Zetterstedt, 1839)

One at Thurstaston Common on 18th May (CD).

49.178 *Stictea mygindiana* ([Denis & Schiffermüller], 1775)

A larva at Bosley Cloud on 6th October (AE).

49.180 *Piniphila bifasciana* (Haworth, 1811)

One at Broomhall, Nantwich on 26th June (PG).

49.188 *Endothenia marginana* (Haworth, 1811)

A larva in a teasel seeded at Danes Moss on 6th January (AE).

49.195 *Bactra furfurana* (Haworth, 1811)

One at Newton Lane, Tattenhall on 2nd August (KH).

49.211 *Ancylis myrtillana* (Treitschke, 1830)

Two larvae on bilberry at Kerridge Hill on 13th September (SHH).

49.216 *Ancylis mitterbacheriana* ([Denis & Schiffermüller], 1775)

One off hawthorn, below oak, at Birtles on 13th May (SHH).

49.231 *Epinotia brunnichana* (Linnaeus, 1767)

One at Kent Close, Bromborough on 17th July (PH), one on the same day at Carleton Road, Higher Poynton and another at Mobberley Lane, Knutsford on 19th July (SHH).

49.233 *Epinotia solandriana* (Linnaeus, 1758)

One at Carleton Road, Higher Poynton on 16th July (SHH), one on 24th July and another on 31st July at Birchall Moss, Hatherton (CK).

49.234 *Epinotia abbreviana* (Fabricius, 1794)

Larval feeding signs on wych elm on 2nd June and an adult off wych elm on 5th July, both at Witchcote Wood, Knutsford (SHH). Also, two at Linley Lane, Alsager on 18th July (MD).

49.244 *Epinotia subocellana* (Donovan, 1806)



One at Tegg's Nose Country Park
on 12th May (MHD).

Muriel Dale

49.251 *Epinotia rubiginosana* (Herrich-Schäffer, 1851)

One on 3rd June and another four days later at Linley Lane, Alsager (MD).

49.253 *Epinotia fraternana* (Haworth, 1811)

One at Sandfield Road, Wallasey on 19th May (Rbi). All four previous records of this species in Cheshire were in the east of the county, between 2015 and 2018.

49.281 *Gypsonoma sociana* (Haworth, 1811)

One at Manor Crescent, Tytherington on 3rd June (DJM) and one at Hargrave Avenue, Crewe on 30th July (T&EH).

49.284 *Epiblema sticticana* (Fabricius, 1794)

One, off coltsfoot, at Lower Withington on 23rd June (SHH).

49.285 *Epiblema scutulana* ([Denis & Schiffermüller], 1775)

Two larvae, from thistle, on 2nd April, which emerged on 14th and 15th, and an adult moth at Common Lane, Waverton on 17th May (HC). Also, one at Newchurch Common on 23rd May (PB).

49.289 *Epiblema costipunctana* (Haworth, 1811)

One at Gee Cross on 30th June (AM).

49.302 *Gravitarmata margarotana* (Heinemann, 1863)

One at Chester on 2nd May (JO).
A New County Record.



John Owen

49.305 **Pine Shoot Moth** *Rhyacionia buoliana* ([Denis & Schiffermüller], 1775)

One at Bayswater Road, Wallasey on 25th June (CS).

49.311 *Dichrorampha aeratana* (Pierce & Metcalfe, 1915)

Among ox-eye daisy, one at Dean Row on 31st May and one at the memorial park, Adlington on 8th June (SHH).

49.318 *Dichrorampha vancouverana* (McDunnough, 1935)

One at Common Lane, Waverton on 23rd June (HC).

49.321 *Dichrorampha petiverella* (Linnaeus, 1758)

One, on yarrow, at Back Lane, Shavington on 1st June (RB) and one at Holly Court, Helsby on 2nd July (MJ&GO).

49.323 *Dichrorampha alpestrana* (Duponchel, [1843])

One at Werneth Low on 24th June (SHH).

49.324 **Pea Moth** *Cydia nigricana* (Fabricius, 1794)

One at Brushes football pitch, Stalybridge on 13th June (DW) and one at Carleton Road, Higher Poynton on 15th July (SHH).

49.335 **Spruce Seed Moth** *Cydia strobilella* (Linnaeus, 1758)

One at Shannon Close, Willaston, Nantwich on 16th May (DT). This was only the third record of the species in Cheshire, the others noted at Burwardsley in 2016 and at Gee Cross in 2020.

49.357 **Plum Fruit Moth** *Grapholita funebrana* (Treitschke, 1835)

A few larvae in Victoria Plums from the garden at Church Way, Wybunbury (AML), an adult moth at Swanscoe Lane, Higher Hurdsfield on 18th July and a larva from inside damson fruit at Hassall on 14th September (SHH).

49.358 *Grapholita tenebrosana* (Duponchel, [1843])

One flying beside a hedgerow in evening sunshine at Werneth Low on 24th June (SHH). This species had only been recorded previously in Cheshire at Alsager in 2012 and at Higher Poynton in 2019 and 2022.

49.373 *Pammene spiniana* (Duponchel, [1843])

One at Common Lane, Waverton on 11th August (HC). Two of only four previous Cheshire records of this species were also in Waverton.

62.012 *Matilella fusca* (Haworth, 1811)

One at Burton Mere Wetlands RSPB (East) on 1st August (GJ).

62.027 *Dioryctria simplicella* (Heinemann, 1863)

One at Rake Lane, Helsby on 22nd June (TS).

62.054 *Homoeosoma sinuella* (Fabricius, 1794)

One at Shannon Close, Willaston, Nantwich on 16th June (DT), one at Badger Bait, Little Neston on 17th July (GJ) and one at Rake Lane, Helsby on 11th August (TS).

62.062 **Indian Meal Moth** *Plodia interpunctella* (Hübner, [1813])

One at Ashworth Close, Bowdon, Altrincham on 19th July (RH).

63.016 *Anania fuscalis* ([Denis & Schiffermüller], 1775)



One at Farr Hall Drive, Heswall on 3rd June (JJ).

John Jakeman

63.017 *Anania lancealis* ([Denis & Schiffermüller], 1775)

One at Ashton's Flash, Northwich on 30th June (DB).

63.021 *Anania terrealis* (Treitschke, 1829)

One on 9th July, one on 17th July and another on 18th July at Dane Road, Sale (JPS).

63.062 *Scoparia subfusca* (Haworth, 1811)

One at Macclesfield Road, Whaley Bridge on 21st May (AS).

63.077 *Chilo phragmitella* (Hübner, [1810])

One at Ashton's Flash, Northwich on 14th July (DB), and one at Farr Hall Drive, Heswall on 31st July (JJ).

63.117 **Ringed China-mark** *Parapoynx stratiotata* (Linnaeus, 1758)

One at Knowle Close, Great Sutton on 22nd September (MBe).

63.118 **Beautiful China-mark** *Nymphula nitidulata* (Hufnagel, 1767)

Two separate sightings on the same day, 7th June, at Rostherne Mere: (JSh), (BB). Also, one at Sunfield, Romiley on 26th July (AB).

63.121 *Donacaula forficella* (Thunberg, 1794)

One at Meadowside, Burwardsley on 19th July (MRW) and one at Chester Zoo Nature Reserve on 29th July (IC).

63.122 *Donacaula mucronella* ([Denis & Schiffermüller], 1775)

Two at Meadowside, Burwardsley on 19th July (MRW).

65.014 **Oak Lutestring** *Cymatophorina diluta* ([Denis & Schiffermüller], 1775)

One at Peckforton Hill on 29th August (MRW).

66.005 **Small Eggar** *Eriogaster lanestris* (Linnaeus, 1758)

A larva at Caldecott on 2nd June (JSi).

69.004 **Convolvulus Hawk-moth** *Agrius convolvuli* (Linnaeus, 1758)

Two (male and female) at Irontongue Hill, Swineshaw Moor on 8th September and another, a female, on the same day at Higher Swineshaw, Stalybridge (DW). Also, one at Holly Court, Helsby on 19th September (MJ&GO).

70.002 **Purple-bordered Gold** *Idaea muricata* (Hufnagel, 1767)

One at Wybunbury Moss on 26th June (BB), another at Wybunbury on the same day and four there on 5th July (RB).

70.004 **Least Carpet** *Idaea rusticata* ([Denis & Schiffermüller], 1775)



One at School Lane, Marbury on 25th July (DK) and two at Buxton Old Road, Disley on 10th August (DTo). First sighted in Cheshire in 1999, at Cheadle Hulme, it has now been recorded on a total of eleven occasions.

David Tomlinson

70.006 **Dwarf Cream Wave** *Idaea fuscovenosa* (Goeze, 1781)

One at Farr Hall Drive, Heswall on 11th July (JJ). Three more at Badger Bait, Little Neston on 17th July, 19th July, and 23rd July (GJ).

70.018 **Plain Wave** *Idaea straminata* (Borkhausen, 1794)

Two at Lower Swineshaw Quarry on 22nd July (DW) and one at Deansfield Way, Elton on 2nd August (SWH). Also, one at Cock Wood, Stalybridge on 3rd August (DW).

70.026 **Smoky Wave** *Scopula ternata* (Schränk, 1802)

One at Cock Wood, Stalybridge on 23rd June and one at Woodhead on 4th July (DW).

70.027 **Cream Wave** *Scopula floslactata* (Haworth, 1809)

One at Bickerton Hill on 11th May (KH).

70.032 **Birch Mocha** *Cyclophora albipunctata* (Hufnagel, 1767)

One at School Lane, Marbury on 19th August (DK). This is only the eighth record of this species in Cheshire. Since the first, at Alderley Edge in 1992, it has occurred at various sites across the full breadth of the county.

70.038 **Vestal** *Rhodometra sacraria* (Linnaeus, 1767)

One at Sandfield Road, Wallasey on 30th October (RBi), one at Hargrave Avenue, Crewe on 31st October (T&EH) and one at Meadowside, Burwardsley on 5th November (MRW).

70.046 **Oblique Carpet** *Orthonama vittata* (Borkhausen, 1794)

One at Meadowside, Burwardsley on 30th May (MRW) and one at School Lane, Marbury on 12th August (DK).

70.063 **Galium Carpet** *Epirrhoe galiata* ([Denis & Schiffermüller], 1775)

One at Brockholes Wood, Crowden on 26th June (CHe, BU, DW) and one at Lower Swineshaw Quarry on 4th August (DW).

70.068 **Beautiful Carpet** *Mesoleuca albicillata* (Linnaeus, 1758)

One on 15th May and another on 5th June at Birchall Moss, Hatherton (CK).

70.092 **Spinach** *Eulithis mellinata* (Fabricius, 1787)

One at Hargrave Avenue, Crewe on 8th June (T&EH) one at Dane Road, Sale on 23rd June (JPS) and one at Hightree Drive, Henbury on 26th June (TW).

70.110 **Small Autumnal Moth** *Epirrita filigrammaria* (Herrich-Schäffer, 1846)

One at Higher Swineshaw, Stalybridge on 2nd September and another on 9th September, one at Lower Swineshaw, Stalybridge on 3rd September (DW) and one at Sunfield, Romiley on 5th September (AB).

70.134 **Barred Rivulet** *Perizoma bifaciata* (Haworth, 1809)

One at Wigg Island, Astmoor Saltmarsh, Runcorn on 2nd August (PFH, DE) and one at Marbury Country Park on 20th August (DB).

70.146 **Haworth's Pug** *Eupithecia haworthiata* (Doubleday, 1856)

One at Hargrave Avenue, Crewe on 13th July (T&EH) and one at Tencherfield, Nantwich on 22nd July (MH).

70.162 **Dwarf Pug** *Eupithecia tantillaria* (Boisduval, 1840)

One in the Stumpy Enclosure of the Deer Park at Dunham Massey on 1st May (DJM), two at Linley Lane, Alsager on 8th May and further ones there on 14th May and on 19th May (MD).

70.163 **Larch Pug** *Eupithecia lariciata* (Freyer, 1841)

One at Kingsley on 12th August (PM).

70.164 **Fletcher's Pug** or **Pauper Pug** *Eupithecia egenaria* (Herrich-Schäffer, 1848)

One at Rake Lane, Helsby on 19th May (TS). This species has been recorded in Cheshire on ten previous occasions (nine in Alsager), all since 2018.

70.165 **Pimpinel Pug** *Eupithecia pimpinellata* (Hübner, [1813])

One at Bayswater Road, Wallasey on 2nd August (CS). There are only five previous records of this species in Cheshire, the most recent coming in 1998.

70.169 **Angle-barred Pug** *Eupithecia innotata* (Hufnagel, 1767)

One at Birchall Moss, Hatherton on 2nd June (CK).

70.175 **Triple-spotted Pug** *Eupithecia trisignaria* (Herrich-Schäffer, 1848)

One at Deansfield Way, Elton on 22nd July (SWH).

70.195 **Streak** *Chesias legatella* ([Denis & Schiffermüller], 1775)

One at Birchall Moss, Hatherton on 4th November (CK).

70.264 **Satin Beauty** *Deileptenia ribeata* (Clerck, 1759)

One at Kennel Wood, Lyme Park on 30th July (NE).

70.268 **Pale Oak Beauty** *Hypomecis punctinalis* (Scopoli, 1763)



One in wet woodland below Walkerwood dam at Walkerwood Reservoir, Stalybridge on 16th May (DW). This was thought to be a new county record, but there is an old undated, pre 1900, record from the Day List (1903) of one taken at Delamere Forest by J Thorpe.

David Walsh

70.288 **Brussels Lace** *Cleorodes lichenaria* (Hufnagel, 1767)

One at Sandfield Road, Wallasey on 22nd June (Rbi). There are seven previous records of this species in Cheshire, but six are dated between 1854 and 1903. The other was in Tattenhall in 2021.

70.292 **Grey Scalloped Bar** *Dyscia fagaria* (Thunberg, 1784)

One at Lower Swineshaw Quarry on 28th May and, at Higher Swineshaw, Stalybridge, one on 7th June and another on 14th June (DW).

70.295 **Grass Wave** *Perconia strigillaria* (Hübner, [1787])

Six on 1st June, four on 5th June, four on 20th June and one on 23rd June, all at Abbots Moss (PB).

70.297 **Grass Emerald** *Pseudoterpna pruinata* (Hufnagel, 1767)

One at Midgley Lane, Wildboarclough on 31st July (A&JB).

71.007 **Poplar Kitten** *Furcula bifida* (Brahm, 1787)

One at Graham Road, Blacon on 5th May (DD), one at Wigg Island, Astmoor Saltmarsh, Runcorn on 11th May (PFH, DE) and, at Wellington Close, Ellesmere Port, on 18th June and 26th June (HJ).

71.010 **Marbled Brown** *Drymonia dodonaea* ([Denis & Schifferrmüller], 1775)

At Meadowside, Burwardsley, one on 6th May and one on 17th May (MRW).

72.023 **Clouded Buff** *Diacrisia sannio* (Linnaeus, 1758)

At Abbots Moss, two on 22nd June and one on 23rd June (PB).

72.025 **Wood Tiger** *Parasemia plantaginis* (Linnaeus, 1758)

One at Tegg's Nose Country Park on 2nd June (TW).

72.038 **Four-dotted Footman** *Cybosia mesomella* (Linnaeus, 1758)

One at Abbots Moss on 5th July (PB).

72.042 **Red-necked Footman** *Atolmis rubricollis* (Linnaeus, 1758)

One at Hoo Moor Plantation on 6th June (Kath Turner) and one at Gee Cross on 30th June (AM).

72.081 **Dark Crimson Underwing** *Catocala sponsa* (Linnaeus, 1767)



One at School Lane,
Marbury on 3rd
September (DK). A
New County Record.

Debbie Knight

72.084 **Mother Shipton** *Callistege mi* (Clerck, 1759)

At Danes Moss Tip on 18th May (AE) and there again on 25th May (SBr, AE, SHH). Also, one at Shocklach Green on 25th May (JSi) and one at Crown Farm Quarry, Oakmere on 31st May (MP).

73.037 **Dark Dagger** *Acronicta tridens* ([Denis & Schiffermüller], 1775)

A larva, east of Chester, SJ46, on 14th September (Anon).

73.047 **Coronet** *Craniophora ligustri* ([Denis & Schiffermüller], 1775)

One at Meadow Lane, Duckington on 25th June (FMCC) , one at Linley Lane, Alsager on 8th July and another there on 31st July (MD).

73.087 **Small Mottled Willow** *Spodoptera exigua* (Hübner, [1808])

One at Carleton Road, Higher Poynton on 8th September (SHH) and one at Bayswater Road, Wallasey on 15th September (CS).

73.126 **Saltern Ear** *Amphipoea fucosa* (Freyer, 1830)

Five males and four females at Badger Bait, Little Neston on 11th August (GJ) and one at Common Lane, Waverton on the same day(HC).

73.127 **Large Ear** *Amphipoea lucens* (Freyer, 1845)

One at Midgley Lane, Wildboarclough on 9th August, another there (a female) on 6th September (A&JB), and two at Swanscoe Lane, Higher Hurdsfield on the same day (SHH).

73.128 **Ear Moth** *Amphipoea oculea* (Linnaeus, 1761)

One at Linley Lane, Alsager on 30th July (MD) and, at Midgley Lane, Wildboarclough, a male on 5th August and another on 9th August (A&JB).

73.137 **Fen Wainscot** *Arenostola phragmitidis* (Hübner, [1803])

One at Deansfield Way, Elton on 6th July(SWH), one at Holly Court, Helsby on 29th July and another there on 5th August (MJ&GO).

73.138 **Lyme Grass** *Longalatedes elymi* (Treitschke, 1825)



One at Bayswater Road, Wallasey on 23rd June (CS). **A New County Record.**

Colin Schofield

73.141 **Brown-veined Wainscot** *Archana dissoluta* (Treitschke, 1825)

One at Bayswater Road, Wallasey on 29th July (CS) and another, on the same day, at Chester Zoo Nature Reserve (IC).

73.157 **Large Nutmeg** *Apamea anceps* ([Denis & Schiffermüller], 1775)

One at Highfield Road, Hazel Grove on 14th June (JWR).

73.173 **Marbled Minor** *Oligia strigilis* (Linnaeus, 1758)

At Knowle Close, Great Sutton, one on 25th May and another on 30th May (MBe), one at Birchall Moss, Hatherton on 3rd June (CK) and one at Swanscoe Lane, Higher Hurdsfield on 20th June (SHH).

73.188 **Flounced Chestnut** *Anchoscelis helvola* (Linnaeus, 1758)

One at Carleton Road, Higher Poynton on 22nd September (SHH) and one at Lower Swineshaw Quarry on 1st October 2024 (DW).

73.211 **Angle-striped Sallow** *Enargia paleacea* (Esper, 1791)



One at Broadbottom Road, Mottram on 14th August (BU), one at Cock Wood, Stalybridge on 17th August (DW), two at Didsbury Intake, Longdendale on 28th August (CHe, DW) and another at Cock Wood, Stalybridge on 31st August (DW).

Bill Underwood

73.215 **Lesser-spotted Pinion** *Cosmia affinis* (Linnaeus, 1767)

One at Meadow Lane, Duckington on 17th August (FMcC).

73.232 **Deep-brown Dart** *Aporophyla lueneburgensis* (Freyer, 1848)

One at Holly Court, Helsby on 22nd September (MJ&GO).

73.246 **Lead-coloured Drab** *Orthosia populeti* (Fabricius, 1781)

One at Marthall Lane, Ollerton on 18th March (CJC) and one at Linley Lane, Alsager on 31st March (MD).

73.248 **Northern Drab** *Orthosia opima* (Hübner, [1809])

One at Bayswater Road, Wallasey on 16th March (CS).

73.251 **Silver Cloud** *Egira conspicillaris* (Linnaeus, 1758)

One at Holly Court, Helsby on 3rd May (MJ&GO). **A New County Record.**



Mandy Jervis

73.252 **Hedge Rustic** *Tholera cespitis* ([Denis & Schiffermüller], 1775)

One at Farr Hall Drive, Heswall on 11th August (JJ).

73.253 **Feathered Gothic** *Tholera decimalis* (Poda, 1761)



One at Sunfield, Romiley on 24th August (AB), one at Marbury Country Park on 26th August, another at Carleton Road, Higher Poynton on 28th August (SHH) and one at Kingsley on 1st September (PM).

Paul Miller

73.275 **White Colon** *Sideridis turbida* (Esper, 1790)

One at Bayswater Road, Wallasey on 23rd June (CS).

73.282 **Varied Coronet** *Hadena compta* ([Denis & Schiffermüller], 1775)

One at Randle Bennett Close, Elworth on 6th June (PFA).

73.290 **Brown-line Bright-eye** *Mythimna conigera* ([Denis & Schiffermüller], 1775)

At Midgley Lane, Wildboarclough, one on 31st July and one on 11th August (A&JB).

73.294 **Southern Wainscot** *Mythimna straminea* (Treitschke, 1825)

One at Shannon Close, Willaston, Nantwich on 29th June (DT), one at School Lane, Marbury on 25th July (DK), one at Boughton Heath allotments on 29th July (CJ) and one at Rake Lane, Helsby on 9th August (TS).

73.297 **White-point** *Mythimna albipuncta* ([Denis & Schiffermüller], 1775)

One at Oldfield Road, Sandbach on 3rd June (DR). Four of only five previous records of this species in Cheshire occurred between 2022 and 2023.

73.299 **Shore Wainscot** *Mythimna litoralis* (Curtis, 1827)

One at Bayswater Road, Wallasey on 23rd June (CS) and one at Sandfield Road, Wallasey on 30th July (RBi).

73.300 **L-album Wainscot** *Mythimna l-album* (Linnaeus, 1767)



One at School Lane, Marbury on 9th October (DK).
A New County Record.

Debbie Knight

73.307 **Pearly Underwing** *Peridroma saucia* (Hübner, [1808])



At Randle Bennett Close, Elworth, one on 11th August and another on 25th August (PFA), one at Bayswater Road, Wallasey on 24th August (CS) and one at Carleton Road, Higher Poynton on 30th October (SHH).

Peter F Atherton

73.313 **White-line Dart** *Euxoa tritici* (Linnaeus, 1761)

One at Bayswater Road, Wallasey on 2nd August and another there on 7th August (CS). At Knowle Close, Great Sutton, one on 13th August and one on 22nd September (MBe).

73.320 **Heart and Club** *Agrotis clavis* (Hufnagel, 1766)

One at Oldfield Road, Sandbach on 21st June (DR), one at Ashton's Flash, Northwich on 22nd June (DB), and one at Yew Tree Road, Wistaston on 28th June (JL).

73.322 **Archer's Dart** *Agrotis vestigialis* (Hufnagel, 1766)

One on 23rd June , two on 24th July and one on 10th August, all at Bayswater Road, Wallasey(CS).

73.324 **Crescent Dart** *Agrotis trux* (Hübner, [1824])

One at Carleton Road, Higher Poynton on 2nd July (SHH).

73.337 **White-marked** *Cerastis leucographa* ([Denis & Schiffermüller], 1775)

One at Meadowside, Burwardsley on 18th March (MRW) and one at Meadow Lane, Duckington on 12th April (FMcC). This species had also been noted in Burwardsley in 2021 and in Duckington in 2023, two of only five previous Cheshire records.

73.360 **Triple-spotted Clay** *Xestia ditrapezium* ([Denis & Schiffermüller], 1775)

At Meadowside, Burwardsley, one on 14th June, one on 23rd June, one at on 15th July and three on 21st July (MRW).

Records of some species did not meet the criteria for inclusion in the previous section, but are worthy of further comment. Some of these are mentioned below.

In the following tables, the number of Cheshire records for each species are stated for each year from 2020. Snapshots of the numbers for the years 2000 and 2010 are also given.

Snapshot of selected Micro-moth species

	2000	2010	2020	2021	2022	2023	2024	2024 Update
4.012 <i>Stigmella aceris</i>	0	0	0	0	0	8	9	Mines in leaves of Field Maple and Norway Maple were recorded in the autumn.
15.011 <i>Caloptilia falconipennella</i>	0	0	0	2	4	2	7	Most records in 2024 are in March, but adults were also seen in August and October
15.0131 <i>Caloptilia honoratella</i>	0	0	0	0	0	2	31	First recorded in Bromborough in 2023. Mines on sycamore and adults, recorded from April to August 2024 have taken the Cheshire total to 33
35.118 Beet Moth <i>Scrobipalpa ocellatella</i>	0	0	0	0	10	1	0	Following the “unprecedented irruption” of 2022, even the single record of 2023 could not be repeated in 2024.
49.073 <i>Acleris schalleriana</i>	0	0	1	0	0	2	7	Records in 2024 extended from January at Wistaston through to December at Higher Poynton.
49.086 <i>Acleris logiana</i>	0	0	0	0	4	6	7	The first appearance of the species was in Alsager, in March 2022. Subsequent records emanate from sites between Ellesmere Port in the west to Sale in the east.
49.356 <i>Grapholita lobarzewskii</i>	0	0	0	2	7	7	5	In Cheshire, the species was first recorded in Nantwich in 2018. Records in 2024 were from Higher Poynton and Upton, Chester.
62.021 <i>Oncocera semirubella</i>	0	0	0	0	0	0	5	Also first recorded in Nantwich, in 2015. All records in 2024 were from Ashton’s Flash, Northwich, where multiple specimens were attracted in July. See photo, below.



Oncocera semirubella
David Bedford

Snapshot of selected Macro-moth species (1)

	2000	2010	2020	2021	2022	2023	2024	2024 Update
52.012 Yellow-legged Clearwing <i>Synanthedon vespiformis</i>	0	0	1	1	3	7	7	The VES lure attracted this species again in 2024, all in the east of the county. Only three of the 24 Cheshire records are dated before 2017.
52.014 Six-belted Clearwing <i>Bembecia ichneumoniformis</i>	0	2	6	8	3	3	5	Ashton's Flashes continue to host this species, while further records in 2024 came from Prenton and Oakmere. The Cheshire total now stands at 69.
65.003 Barred Hook-tip <i>Watsonalla cultraria</i>	0	0	4	7	13	9	5	The rate of increase has slowed in 2024, the total number reaching 53. Most records are from July to September, but an early cluster occurs in May.
69.007 Pine Hawk-moth <i>Sphinx pinastri</i>	0	0	1	2	0	7	7	All seven records in 2024 came from the south of Cheshire, in June and July. The total has reached 23.
70.036 Maiden's Blush <i>Cyclophora punctaria</i>	0	1	6	9	23	27	102	The 222 records are distributed widely throughout the county.
70.037 Clay Triple-lines <i>Cyclophora linearia</i>	0	2	6	2	8	2	7	The small incursion into east Cheshire, reported for 2023, was not repeated in 2024. The total for the county now stands at 56.
70.055 Large Twin-spot Carpet <i>Xanthorhoe quadrifasiata</i>	0	0	3	9	19	19	22	First recorded in Cheshire in 2006, at Alsager. Fourteen of the sightings in 2024 were at Hatherton.
70.083 Cypress Carpet <i>Thera cypressata</i>	0	0	0	0	1	3	8	All fourteen Cheshire records are from the west of the county, but the range extended in 2024 as far as Helsby. The first sighting was in Willaston (Wirral) in 2015.
70.104 Devon Carpet <i>Lampropteryx otregiata</i>	0	0	6	13	16	15	21	First recorded in Cheshire at Higher Poynton in 2011, the species continues to be seen in the east of the county, but there were also records at Hatherton, Wybunbury and Dunham Massey (in May and in July).
70.110 Small Autumnal Moth <i>Epirrita filigrammaria</i>	0	1	0	8	3	2	4	Three of the records in 2024 were from the moors near Stalybridge, but the fourth appeared at a security light in Romiley. They take the total for Cheshire to 56.
70.145 Bilberry Pug <i>Pasiphila debiliata</i>	0	0	0	0	0	0	10	Apart from the one from Thurstaston Common, all records in 2024 were from north-east Cheshire. The total stands at 17.
70.146 Haworth's Pug <i>Eupithecia haworthiata</i>	0	0	1	2	7	0	2	Three species favoured the north-west of the county in 2022, but records from 2024 came from Nantwich and Crewe.
70.159 Cypress Pug <i>Eupithecia phoeniceata</i>	0	0	1	4	2	6	8	First recorded in Cheshire in 2019, the county total has now reached 22.

Snapshot of selected Macro-moth species (2)

	2000	2010	2020	2021	2022	2023	2024	2024 Update
70.264 Satin Beauty <i>Deileptenia ribeata</i>	0	1	3	7	3	7	1	The number of Cheshire records has gone up by over 60 per cent since 2020, five of the seven records in 2021 coming from Alsager. Only three records in 2022, from Alsager and Lamaload, but Burwardsley, Peckforton Hill, Alsager, Lyme Park and Hoo Moor provided seven records for 2023.
72.010 Black Arches <i>Lymantria monacha</i>	0	0	9	13	21	61	91	There had been only fourteen records in Cheshire, up to 2019. The total now stands at 217. Sightings continue to come predominantly from the south and west of the county.
72.029 Scarlet Tiger <i>Callimorpha dominula</i>	0	2	6	9	14	40	79	The species continues to spread, albeit tentatively, into east Cheshire. One was recorded in June in Marple.
72.041 Four-spotted Footman <i>Lithosia quadra</i>	0	1	0	0	8	7	0	The Cheshire total remains at 25; the species was not seen in 2024.
72.049 Orange Footman <i>Eilema sororcula</i>	0	1	6	10	22	32	73	The first Cheshire record was in 2009, at Alsager. The total now stands at 180.
73.021 Scarce Silver Y <i>Syngnapha interrogationis</i>	0	0	0	0	8	9	14	The 24 records prior to 2022 have been boosted to 55, mainly by recording in the Stalybridge area.
73.059 Toadflax Brocade <i>Calophasia lunula</i>	0	0	9	10	8	22	7	The vast majority of records are from the area around Crewe and Nantwich. From the first record in 2018, the total has now grown to 66.
73.085 Marbled Green <i>Nyctobrya muralis</i>	0	0	0	7	8	1	8	The only record before 2021 was of two specimens on a wall at Chester in 1899.
73.137 Fen Wainscot <i>Arenostola phragmitidis</i>	0	0	1	0	7	4	3	A reed-bed moth, recorded in Cheshire just twenty times prior to 2022.
73.295 Delicate <i>Mythimna vitellina</i>	0	0	0	0	0	1	6	In the last two years, the total number of records has almost doubled.
73.322 Archer's Dart <i>Agrotis vestigialis</i>	1	4	2	2	13	10	3	Almost all records this century have been at Hoylake and Wallasey.
73.330 Radford's Flame Shoulder <i>Ochropleura leucogaster</i>	0	0	0	0	0	0	5	New County Record. Seen in October in Poynton and the Wirral then in Burwardsley in November.

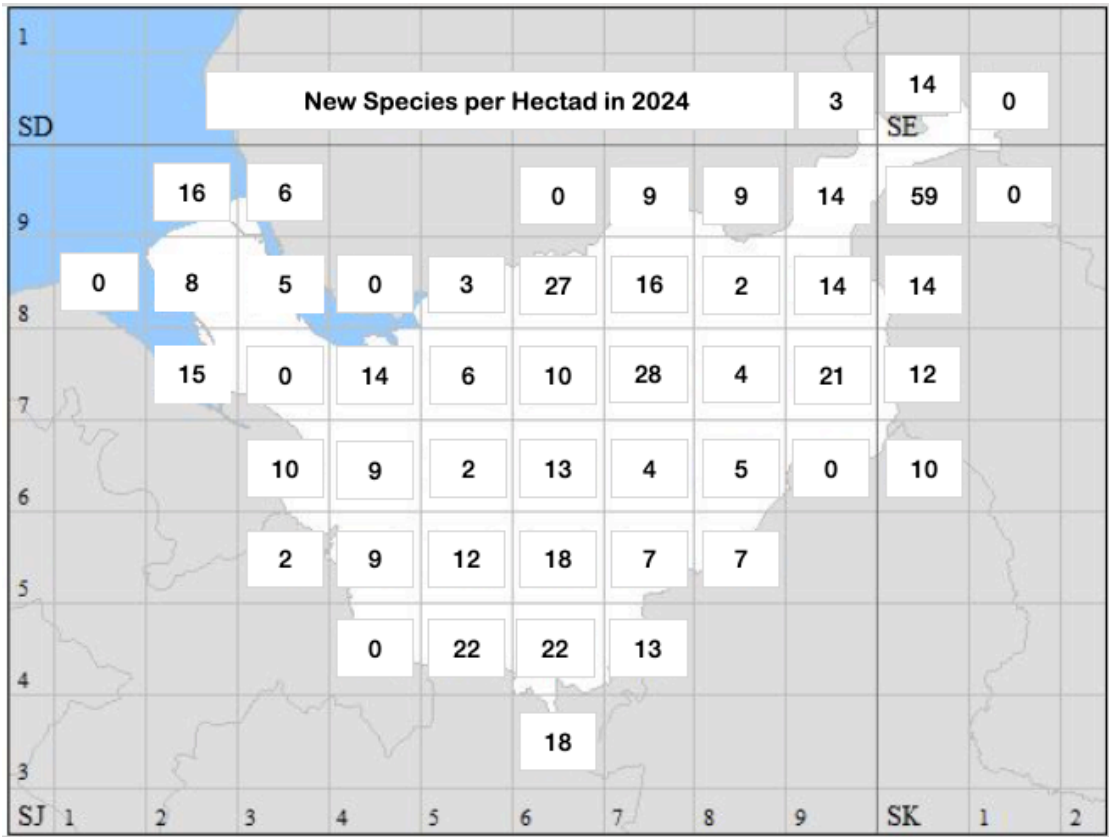
Species new for their respective 10km squares in 2024

Here is a summary of the species that were new for their respective 10km squares in 2024. A further 494 new hectad records were added during the year. The law of diminishing returns might be kicking in, as the total fell short of the 568 new hectad records in 2023.

There remains, however, plenty of scope for recording in areas that have been under-explored in previous years.

With 59 species new to the SK09 hectad, ongoing field work around Stalybridge exceeded the 49 from 2023.

Various recorders contributed to the impressive totals achieved just east of Warrington and the nearby hectad surrounding Knutsford. The two neighbouring squares south-west of Crewe to the county border exactly matched each other with 22 new species each.



Some of the squares are only partially in VC58 and although species may have been recorded in adjacent counties, they are new for our side of the boundary. The following are listed in the Agassiz, Beavan & Heckford taxonomic order for each 10km square.

SD90

Scarce Silver Y *Syngrapha interrogationis*; **Frosted Orange** *Gortyna flavago*; **Small Wainscot** *Denticucullus pygmina*.

SE00

Light Brown Apple Moth *Epiphyas postvittana*; **Eyed Hawk-moth** *Smerinthus ocellata*; **Convolvulus Hawk-moth** *Agrius convolvuli*; **Small Phoenix** *Ecliptopera silaceata*; **Spring Usher** *Agriopis leucophaearia*; **Muslin Footman** *Nudaria mundana*; **Scarce Footman** *Eilema complana*; **Dark Spectacle** *Abrostola triplasia*; **Marbled White Spot** *Protodeltote pygarga*; **Vine's Rustic** *Hoplodrina ambigua*; **Frosted Orange** *Gortyna flavago*; **Flounced Rustic** *Luperina testacea*; **Pink-barred Sallow** *Xanthia togata*; **Setaceous Hebrew Character** *Xestia c-nigrum*.

SJ27

Caloptilia robustella; *Phyllocnistis saligna*; *Esperia sulphurella*; *Isophrictis striatella*; *Batrachedra praeangusta*; *Stathmopoda pedella*; *Apotomis betuletana*; *Gypsonoma oppressana*; **Common Lutestring** *Ochropacha duplaris*; **Maple Pug** *Eupithecia inturbata*; **Cypress Pug** *Eupithecia phoeniceata*; **Scarlet Tiger** *Callimorpha dominula*; **Scarce Footman** *Eilema complana*; **Delicate** *Mythimna vitellina*; **Radford's Flame Shoulder** *Ochroleuca leucogaster*.

SJ28

Phyllocnistis saligna; *Coleophora peribenanderi*; *Exapate congelatella*; *Eudemis profundana*; *Hedya atropunctana*; **Bilberry Pug** *Pasiphila debiliata*; **Maple Pug** *Eupithecia inturbata*; **Radford's Flame Shoulder** *Ochroleuca leucogaster*.

SJ29

Willow Ermine *Yponomeuta rorella*; *Glyphipterix fuscoviridella*; *Argyresthia trifasciata*; **Cherry Fruit Moth** *Argyresthia pruniella*; *Brachmia blandella*; *Gelechia nigra*; *Batrachedra praeangusta*; *Coleophora otidipennella*; *Stathmopoda pedella*; **Pine Shoot Moth** *Rhyacionia buoliana*; *Anania perlucidalis*; **Cypress Carpet** *Thera cupressata*; **Scarlet Tiger** *Callimorpha dominula*; **Small Mottled Willow** *Spodoptera exigua*; **Lyme Grass** *Longalatedes elymi*; **Barred Sallow** *Tiliacea aurago*.

SJ35

Adela reaumurilla; **Common Marbled Carpet** *Dysstroma truncata*.

SJ36

Limnaecia phragmitella; *Bryotropha domestica*; *Blastodacna hellerella*; *Mompha propinquella*; **Large Fruit-tree Tortrix** *Archips podana*; *Aethes smeathmanniana*; **Pine Leaf-mining Moth** *Clavigesta purdeyi*; *Anania crocealis*; *Eudonia angustea*; **Scarlet Tiger** *Callimorpha dominula*.

SJ38

Phyllonorycter platani; *Palpita vitrealis*; **Barred Hook-tip** *Watsonalla cultraria*; **Large Twin-spot Carpet** *Xanthorhoe quadrifasciata*; **Scarlet Tiger** *Callimorpha dominula*.

SJ39

Cherry Fruit Moth *Argyresthia pruniella*; *Epinotia fraternana*; **Northern Spinach** *Eulithis populata*; **Brussels Lace** *Cleorodes lichenaria*; **Scarce Bordered Straw** *Helicoverpa armigera*; **Radford's Flame Shoulder** *Ochroleuca leucogaster*.

SJ45

Depressaria daucella; *Cnephasia longana*; *Anania crocealis*; **Pine Hawk-moth** *Sphinx pinastri*; **Oak-tree Pug** *Eupithecia dodoneata*; **Clifden Nonpareil** *Catocala fraxini*; **Coronet** *Craniophora ligustri*; **Broad-barred White** *Hecatera bicolorata*; **Least Black Arches** *Nola confusalis*.

SJ46

Micropterix calthella; *Ypsolopha horridella*; *Depressaria ultimella*; *Coleophora limosipennella*; *Coleophora caespititiella*; **Brown Plume** *Stenoptilia pterodactyla*; *Bactra furfurana*; *Gravitarata margarotana*; *Grapholita lobarzewskii*.

SJ47

Etainia sericeopeza; *Nemapogon ruricolella*; *Caloptilia honoratella*; *Pseudoswammerdamia combinella*; *Stathmopoda pedella*; *Dioryctria simplicella*; **Plain Wave** *Idaea straminata*; **Clay Triple-lines** *Cyclophora linearia*; **Cypress Carpet** *Thera cupressata*; **Fletcher's Pug or Pauper Pug** *Eupithecia egenaria*; **Triple-spotted Pug** *Eupithecia trisignaria*; **Orange Footman** *Eilema sororcula*; **Clifden Nonpareil** *Catocala fraxini*; **Silver Cloud** *Egira conspiciellaris*.

SJ54

Pyrausta aurata; **Least Carpet** *Idaea rusticata*; **Small Dusty Wave** *Idaea seriata*; **Birch Mocha** *Cyclophora albipunctata*; **Juniper Carpet** *Thera juniperata*; **Plain Pug** *Eupithecia simplicata*; **Scarce Umber** *Agriopsis aurantiaria*; **Black Arches** *Lymantria monacha*; **Buff Footman** *Eilema depressa*; **Scarce Footman** *Eilema complana*; **Orange Footman** *Eilema sororcula*; **Beautiful Hook-tip** *Laspeyria flexula*; **Dark Crimson Underwing** *Catocala sponsa*; **Sycamore** *Acronicta aceris*; **Vine's Rustic** *Hoplodrina ambigua*; **Small Rufous** *Coenobia rufa*; **Cloaked Minor** *Mesoligia furuncula*; **Blair's Shoulder-knot** *Lithophane leautieri*; **Red Sword-grass** *Xylota vetusta*; **Southern Wainscot** *Mythimna straminea*; **L-album Wainscot** *Mythimna l-album*; **Obscure Wainscot** *Leucania obsoleta*.

SJ55

Incurvaria masculella; *Bucculatrix nigricomella*; *Paraswammerdamia albicapitella*; *Pleurota bicostella*; *Recurvaria leucatella*; *Epagoge grotiana*; *Acleris cristana*; *Thyraylia nana*; **Meal Moth** *Pyralis farinalis*; **Oblique Carpet** *Orthonama vittata*; **Sycamore** *Acronicta aceris*; **Radford's Flame Shoulder** *Ochropleura leucogaster*.

SJ56

Apple Ermine *Yponomeuta malinellus*; *Eupoecilia angustana*.

SJ57

Luffia lapidella; *Caloptilia semifascia*; **Six-belted Clearwing** *Bembecia ichneumoniformis*; **Pine Hawk-moth** *Sphinx pinastri*; **Plain Pug** *Eupithecia simplicata*; **Burnet Companion** *Euclidia glyphica*.

SJ58

Caloptilia populetorum; **Maiden's Blush** *Cyclophora punctaria*; **Orange Footman** *Eilema sororcula*.

SJ64

Caloptilia populetorum; *Caloptilia betulicola*; *Caloptilia falconipennella*; *Phyllonorycter trifasciella*; *Ypsolopha horridella*; *Argyresthia glaucinella*; *Argyresthia spinosella*; *Argyresthia albistria*; *Metalampra italica*; *Batia lunaris*; *Athrips mouffetella*; *Carpatolechia fugitivella*; *Batrachedra praeangusta*; **Brown Plume** *Stenoptilia pterodactyla*; *Acleris ferrugana*; *Aethes rubigana*; *Piniphila bifasciana*; *Notocelia rosaecolana*; *Pammene giganteana*; **Currant Clearwing** *Synanthedon tipuliformis*; **Clay Triple-lines** *Cyclophora linearia*; **Plain Pug** *Eupithecia simplicata*.

SJ65

Stigmella aceris; *Psychoides filicivora*; *Caloptilia falconipennella*; *Caloptilia honoratella*; *Metalampra italica*; *Agonopterix scopariella*; *Prochoreutis sehestediana*; *Acleris laterana*; *Acleris schalleriana*; *Acleris hastiana*; *Acleris literana*; *Gypsonoma sociana*; **Spruce Seed Moth** *Cydia strobilella*; *Pammene aurita*; *Homoeosoma sinuella*; **Haworth's Pug** *Eupithecia*

haworthiata; **Cypress Pug** *Eupithecia phoeniceata*; **Light Knot Grass** *Acronicta menyanthidis*.

SJ66

Cypress Tip Moth *Argyresthia cupressella*; **Hawthorn Moth** *Scythropia crataegella*; *Carpatolechia alburnella*; *Blastobasis lacticolella*; *Pandemis cinnamomeana*; *Acleris logiana*; *Pseudargyrotoza conwagana*; *Orthotaenia undulana*; *Epiblema scutulana*; *Grapholita lunulana*; **Lesser Wax Moth** *Achroia grisella*; **Clay Triple-lines** *Cyclophora linearia*; **Scarlet Tiger** *Callimorpha dominula*.

SJ67

Etainia sericepeza; *Etainia louisella*; *Lampronia fuscata*; *Morphaga choragella*; *Bryotropha domestica*; **Plum Tortrix** *Hedya pruniana*; *Oncocera semirubella*; *Palpita vitrealis*; **Barred Rivulet** *Perizoma bifaciata*; **Delicate** *Mythimna vitellina*.

SJ68

Eriocrania unimaculella; *Eriocrania sangii*; *Stigmella aceris*; *Stigmella assimilella*; *Ectoedemia intimella*; *Ectoedemia argyropeza*; *Psychoides filicivora*; *Caloptilia honoratella*; *Phyllonorycter viminiella*; *Phyllonorycter salicicolella*; *Phyllonorycter dubitella*; *Phyllocnistis saligna*; *Ypsolopha scabrella*; *Bryotropha terrella*; *Carpatolechia alburnella*; *Coleophora lusciniapennella*; *Coleophora trifolii*; *Coleophora peribenanderi*; **Hemp Agrimony Plume** *Adaina microdactyla*; **Apple Leaf Skeletonizer** *Choreutis pariana*; *Epinotia nisella*; *Pammene giganteana*; *Acrobasis consociella*; **Meal Moth** *Pyralis farinalis*; **Maiden's Blush** *Cyclophora punctaria*; **Marbled White Spot** *Protodeltote pygarga*; **Vine's Rustic** *Hoplodrina ambigua*.

SJ74

Adela reaumurilla; *Cauchas rufimitrella*; *Paraswammerdamia nebulella*; *Ypsolopha scabrella*; *Ypsolopha ustella*; *Argyresthia trifasciata*; *Psoricoptera gibbosella*; **Apple and Plum Case-bearer** *Coleophora spinella*; **Many-plumed Moth** *Alucita hexadactyla*; *Isotrias rectifasciana*; **Barred Fruit-tree Tortrix** *Pandemis cerasana*; **Plum Tortrix** *Hedya pruniana*; **Scarlet Tiger** *Callimorpha dominula*.

SJ75

Caloptilia populetorum; *Caloptilia honoratella*; *Anacamptis populella*; *Mompha jurassicella*; **Plum Fruit Moth** *Grapholita funebrana*; **White-point** *Mythimna albipuncta*; **Obscure Wainscot** *Leucania obsoleta*.

SJ76

Orchard Ermine *Yponomeuta padella*; *Exapate congelatella*; *Grapholita lunulana*; **Gem** *Nycterosea obstipata*.

SJ77

Eriocrania sangii; *Stigmella aceris*; *Stigmella roborella*; **Brown-dotted Clothes Moth** *Niditinea fuscella*; *Caloptilia alchimiella*; *Caloptilia honoratella*; *Parornix betulae*; *Phyllocnistis saligna*; **Apple Ermine** *Yponomeuta malinellus*; *Plutella porrectella*; *Oegoconia quadripuncta*; *Bryotropha senectella*; *Bryotropha affinis*; *Monochroa tenebrella*; *Carpatolechia fugitivella*; *Coleophora lutipennella*; *Coleophora albidella*; *Coleophora otidipennella*; *Elachista canapennella*; *Mompha propinquella*; *Mompha jurassicella*; *Orthotaenia undulana*; **Yellow-legged Clearwing** *Synanthedon vespiformis*; *Acrobasis repandana*; *Acrobasis consociella*; *Ephestia woodiella*; **Maple Pug** *Eupithecia inturbata*; **Puss Moth** *Cerura vinula*.

SJ78

Eriocrania cicatricella; *Eriocrania sangii*; *Nemapogon koenigi*; *Psychoides verhuella*; *Caloptilia honoratella*; *Metalampra italica*; *Psoricoptera gibbosella*; *Exoteleia dodecella*; **Apple and Plum Case-bearer** *Coleophora spinella*; *Coleophora caespititiella*; *Mompha*

langiella; *Cydia fagiglandana*; *Acrobasis consociella*; **Devon Carpet** *Lampropteryx otregiata*; **Maple Pug** *Eupithecia inturbata*; **Black Arches** *Lymantria monacha*.

SJ79

Caloptilia semifascia; *Caloptilia honoratella*; *Phyllonorycter strigulatella*; *Phyllonorycter schreberella*; *Phyllonorycter tristrigella*; *Acleris laterana*; *Euzophera pinguis*; **Maiden's Blush** *Cyclophora punctaria*; **Vine's Rustic** *Hoplodrina ambigua*.

SJ85

Stigmella ruficapitella; *Narycia duplicella*; *Morphaga choragella*; *Calybites phasianipennella*; **Leek Moth** *Acrolepiopsis assectella*; *Gynnidomorpha alismana*; **Clifden Nonpareil** *Catocala fraxini*.

SJ86

Coleophora orbitella; *Schreckensteinia festaliella*; **Scarlet Tiger** *Callimorpha dominula*; **Clifden Nonpareil** *Catocala fraxini*; **Grey Shoulder-knot** *Lithophane ornitopus*.

SJ87

Caloptilia honoratella; *Coleophora tamesis*; **Yellow-legged Clearwing** *Synanthedon vespiformis*; **Black Arches** *Lymantria monacha*.

SJ88

Phyllocnistis saligna; *Dichrorampha aeratana*.

SJ89

Agonopterix propinquella; *Ptycholoma lecheana*; *Exapate congelatella*; *Notocelia rosaecolana*; *Palpita vitrealis*; **Small Blood-vein** *Scopula imitaria*; **Dark Spinach** *Pelurga comitata*; **Plain Pug** *Eupithecia simplicata*; **Waved Umber** *Menophra abruptaria*.

SJ97

Stigmella poterii; *Caloptilia alchimiella*; *Caloptilia honoratella*; **Apple Ermine** *Yponomeuta malinellus*; **Willow Ermine** *Yponomeuta rorrella*; *Cedestis subfasciella*; **Cypress Tip Moth** *Argyresthia cupressella*; *Batia lunaris*; *Anarsia innoxia*; *Bryotropha senectella*; *Bryotropha similis*; **Apple and Plum Case-bearer** *Coleophora spinella*; *Coleophora argentula*; **Spruce Bud Moth** *Zeiraphera ratzeburgiana*; *Dichrorampha acuminatana*; *Ephestia woodiella*; **Bilberry Pug** *Pasiphila debiliata*; **Scarlet Tiger** *Callimorpha dominula*; **Vine's Rustic** *Hoplodrina ambigua*; **Large Ear** *Amphipoea lucens*; **Small Ranunculus** *Hecatera dysodea*.

SJ98

Caloptilia falconipennella; *Caloptilia honoratella*; **Orchard Ermine** *Yponomeuta padella*; **Apple Ermine** *Yponomeuta malinellus*; **Willow Ermine** *Yponomeuta rorrella*; *Gelechia nigra*; *Neocochylis hybridella*; *Dichrorampha aeratana*; *Pammene argyrana*; *Palpita vitrealis*; **Scarlet Tiger** *Callimorpha dominula*; **Large Nutmeg** *Apamea anceps*; **Crescent Dart** *Agrotis trux*; **Radford's Flame Shoulder** *Ochroleuca leucogaster*.

SJ99

Opotege salaciella; *Triaxomera parasitella*; *Caloptilia semifascia*; *Caloptilia honoratella*; **Apple and Plum Case-bearer** *Coleophora spinella*; *Acleris hastiana*; *Grapholita tenebrosana*; *Pammene argyrana*; **Fruitlet Mining Tortrix** *Pammene rhediella*; *Palpita vitrealis*; **Beautiful China-mark** *Nymphula nitidulata*; **Maple Pug** *Eupithecia inturbata*; **Pale Oak Beauty** *Hypomecis punctinalis*; **Red-necked Footman** *Atolmis rubricollis*.

SK06

Coleophora lutipennella; *Epermenia chaerophyllella*; **Bilberry Tortrix** *Aphelia viburnana*; **Cyclamen Tortrix** *Clepsis spectrana*; *Acleris aspersana*; **Leopard Moth** *Zeuzera pyrina*; **Grass Emerald** *Pseudoterpna pruinata*; **Large Ear** *Amphipoea lucens*; **Rufous Minor** *Oligia versicolor*; **Oak Nycteoline** *Nycteola revayana*.

SK07

Orange Swift *Triodia sylvina*; *Coleophora lusciniapennella*; *Blastobasis adustella*; *Dioryctria abietella*; **Small Fan-footed Wave** *Idaea biselata*; **Devon Carpet** *Lampropteryx otregiata*; **Common Wave** *Cabera exanthemata*; **Scarce Footman** *Eilema complana*; **Lempke's Gold Spot** *Plusia putnami*; **Marbled White Spot** *Protodeltote pygarga*; **Lesser Common Rustic** *Mesapamea didyma*; **Six-striped Rustic** *Xestia sexstrigata*.

SK08

Eriocrania unimaculella; *Bucculatrix nigricomella*; *Caloptilia falconipennella*; *Aspilapteryx tringipennella*; **Cypress Tip Moth** *Argyresthia cupressella*; *Psoricoptera gibbosella*; *Coleophora deauratella*; **Bramble Shoot Moth** *Notocelia uddmanniana*; **Spotted Shoot Moth** *Rhyacionia pinivorana*; *Grapholita jungiella*; *Scoparia subfusca*; **Grey Birch** *Aethalura punctulata*; **Grey Arches** *Polia nebulosa*; **Dark Sword-grass** *Agrotis ipsilon*.

SK09

Rose Leaf Miner *Stigmella anomalella*; *Stigmella speciosa*; *Bohemannia pulverosella*; *Opotegea salaciella*; *Coptotriche marginea*; *Caloptilia stigmatella*; *Phyllonorycter junoniella*; **Nut Leaf Blister Moth** *Phyllonorycter coryli*; *Ypsolopha sequella*; *Diurnea lipsiella*; *Agonopterix conterminella*; *Agonopterix angelicella*; *Hypatima rhomboidella*; *Chrysoesthia sexguttella*; **Dusky Plume** *Oidaematophorus lithodactyla*; **Light Brown Apple Moth** *Epiphyas postvittana*; *Tortricodes alternella*; *Acleris literana*; *Pseudargyrotoza conwagana*; *Eudemis profundana*; *Epinotia ramella*; *Epinotia bilunana*; *Gypsonoma dealbana*; **Codling Moth** *Cydia pomonella*; *Cydia fagiglandana*; **Yellow-legged Clearwing** *Synanthedon vespiformis*; **Currant Clearwing** *Synanthedon tipuliformis*; *Phycita roborella*; *Udea prunalis*; *Calamotropha paludella*; *Crambus perlella*; *Catoptria falsella*; **Brown China-mark** *Elophila nymphaeata*; **Water Veneer** *Acentria ephemerella*; **Pine Carpet** *Pennithera firmata*; **Grey Pine Carpet** *Thera obeliscata*; **Broken-barred Carpet** *Electrophaes corylata*; **Dingy Shell** *Euchoeca nebulata*; **Scallop Shell** *Rheumaptera undulata*; **Tissue** *Triphosa dubitata*; **Bilberry Pug** *Pasiphila debiliata*; **Oak-tree Pug** *Eupithecia dodoneata*; **August Thorn** *Ennomos quercinaria*; **Swallow-tailed Moth** *Ourapteryx sambucaria*; **Large Emerald** *Geometra papilionaria*; **Muslin Footman** *Nudaria mundana*; **Small Fan-foot** *Herminia grisealis*; **Miller** *Acronicta leporina*; **Mullein** *Cucullia verbasci*; **Marbled Beauty** *Bryophila domestica*; **Vine's Rustic** *Hoplodrina ambigua*; **Old Lady** *Mormo maura*; **Haworth's Minor** *Celaena haworthii*; **Small Rufous** *Coenobia rufa*; **Grey Shoulder-knot** *Lithophane ornitopus*; **Powdered Quaker** *Orthosia gracilis*; **Campion** *Sideridis rivularis*; **Turnip Moth** *Agrotis segetum*; **Dark Sword-grass** *Agrotis ipsilon*.

Migrant Species in 2024

The following table shows the species of migrant moths that were recorded in Cheshire in 2024.

ABH	Common Name	Taxon	Records	Moths	Earliest Date	Latest Date
18.001	Diamond-back Moth	<i>Plutella xylostearna</i>	389	918	12 Apr	9 Nov
28.008	-	<i>Metalampra italica</i>	19	21	3 Jun	30 Aug
63.031	Rusty-dot Pearl	<i>Udea ferrugalis</i>	35	41	19 May	15 Nov
63.048	-	<i>Palpita vitrealis</i>	13	13	5 Aug	2 Nov
63.052	Rush Veneer	<i>Nomophila noctuella</i>	22	22	30 May	14 Nov
69.004	Convolvulus Hawk-moth	<i>Agrius convolvuli</i>	3	4	8 Sep	19 Sep
70.038	Vestal	<i>Rhodometra sacraria</i>	3	3	30 Oct	5 Nov
70.047	Gem	<i>Nycterosea obstipata</i>	5	5	25 Jun	31 Oct
73.015	Silver Y	<i>Autographa gamma</i>	1331	2251	1 Jan	17 Dec
73.087	Small Mottled Willow	<i>Spodoptera exigua</i>	2	2	8 Sep	15 Sep
73.295	Delicate	<i>Mythimna vitellina</i>	6	6	6 Oct	31 Oct
73.307	Pearly Underwing	<i>Peridroma saucia</i>	4	4	11 Aug	30 Oct
73.327	Dark Sword-grass	<i>Agrotis ipsilon</i>	66	74	14 Feb	15 Nov
73.330	Radford's Flame Shoulder	<i>Ochropleura leucogaster</i>	5	5	21 Oct	7 Nov

Increased Distribution in 2024

Thirteen species were new to four or more hectads in 2024.

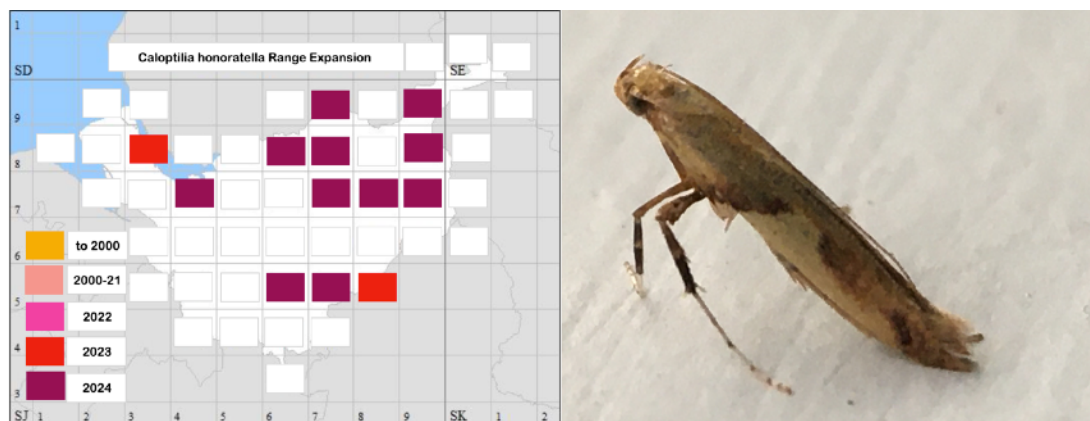
The apparent spread of some of these species across the county is illustrated, below. It is not easy to state whether it is indicative of a trend to wider geographical distribution or simply a consequence of increased recording.

15.011 *Caloptilia falconipennella* (Hübner, [1813])

The species was first recorded in Bromborough in 2021. There was a second record in the same year in Alsager. The only hectad to see this species for the first time in 2022 was the Macclesfield area, but there were new records in 2023 for Kingsley and Partington. In 2024, the species was first recorded in Whaley Bridge, Higher Poynton, Hatherton and Nantwich

15.013 *Caloptilia honoratella* (Rebel, 1914)

First recorded in Bromborough in 2023. Just as for *Caloptilia falconipennella* there was then a second record in Alsager. In 2024, the species has been recorded in eleven new hectads.



Clive Donaldson

15.090 *Phyllocnistis saligna* (Zeller, 1839)

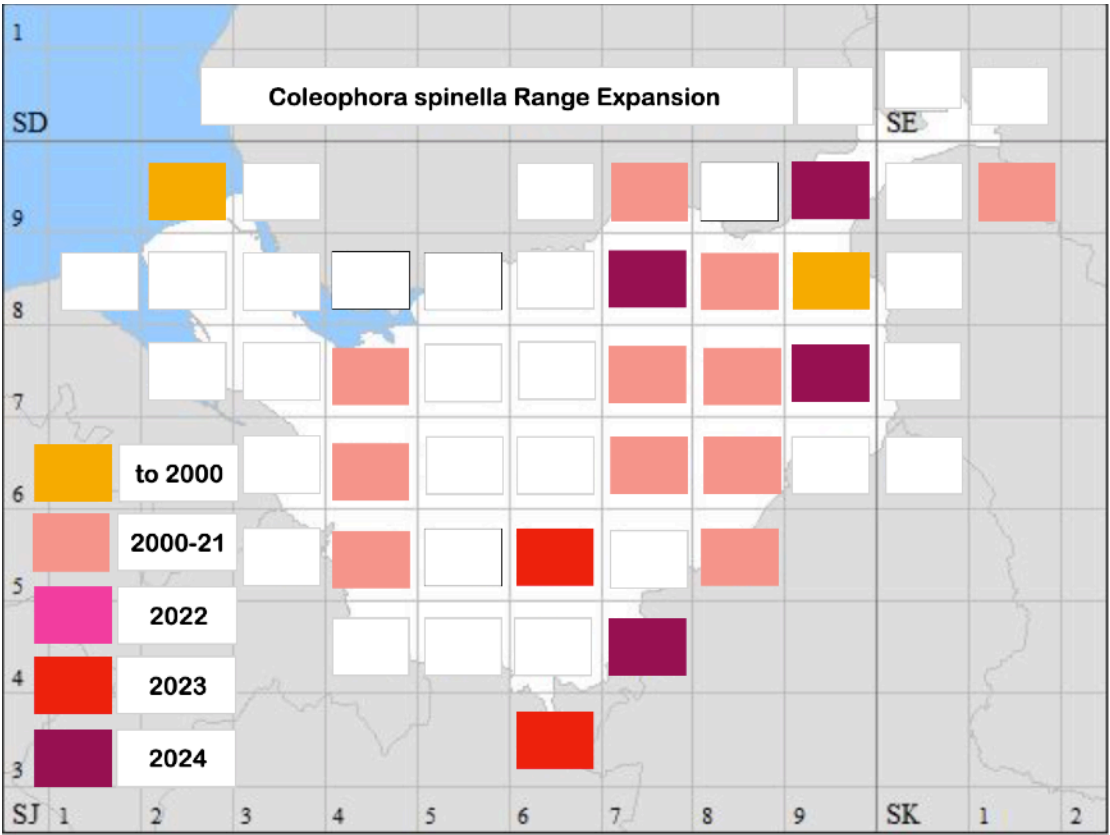
Leaf mines were discovered on the Wirral and in hectads surrounding those in the centre of Cheshire where the species had already been recorded.

16.003 Apple Ermine *Yponomeuta malinellus* (Zeller, 1838)

The necessity of identification by observing an occupied larval web or breeding an adult from the larval foodplant has undoubtedly restricted the number of records. However, in 2024, the species was recorded in four new hectads in the centre and east of the county, adding to previous records in Wilmslow and on the Wirral.

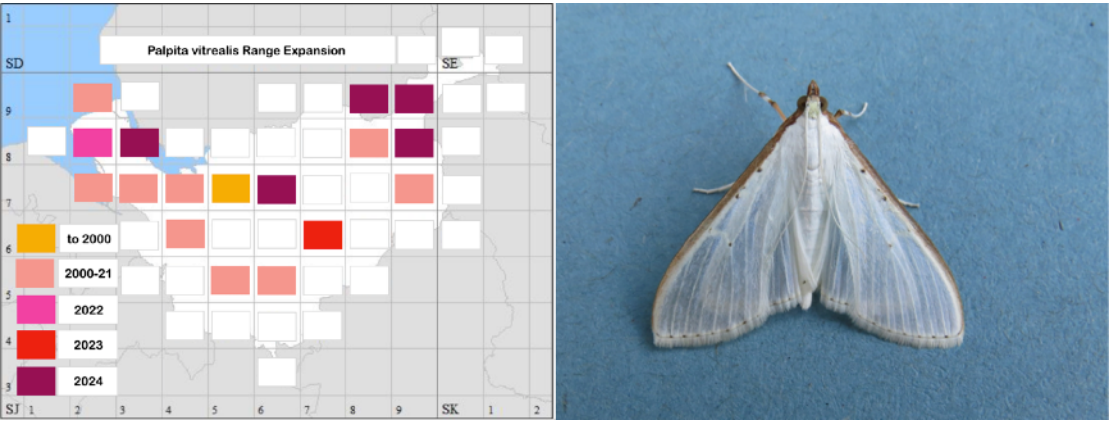
37.016 Apple and Plum Case-bearer *Coleophora spinella* (Schrank, 1802)

There were new records for four hectads in 2024, cementing the coverage in east Cheshire.



63.048 *Palpita vitrealis* (Rossi, 1794)

Of the 37 records of this species in Cheshire, six came in 2023 and thirteen in 2024. The increase in its distribution - including five new hectads in 2024 - is shown below, left.



David Bedford

70.148 Maple Pug *Eupithecia inturbata* (Hübner, [1817])

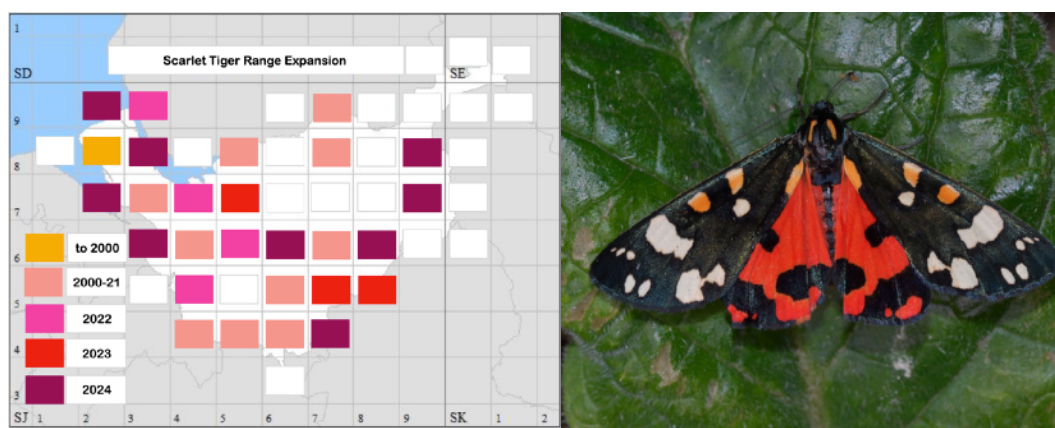
After no increase in the distribution in 2023, there were expansions in 2024 into five new hectads, with records at Heswall and Little Neston in the west, Dunham Massey and Knutsford in the centre and Romiley in the east.

70.166 Plain Pug *Eupithecia simpliciat*a (Haworth, 1809)

Records from 2000 to 2021 showed a spread of Plain Pug to the south and east, whilst maintaining its pre-2000 hold in the west of the county. In 2024, the species was recorded for the first time in Sale, Kingsley, Hatherton and Marbury.

72.029 Scarlet Tiger *Callimorpha dominula* (Linnaeus, 1758)

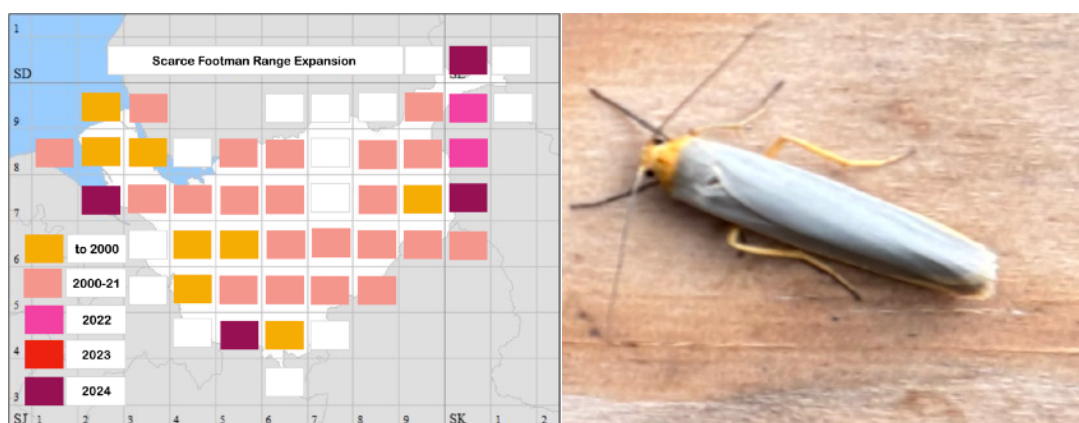
The annual report of 2022 stated that “East Cheshire is proving inhospitable [for Scarlet Tiger]”. The last two years, though, have seen further expansion, into Congleton, Macclesfield and Marple.



Kate Hughes

72.046 Scarce Footman *Eilema complana* (Linnaeus, 1758)

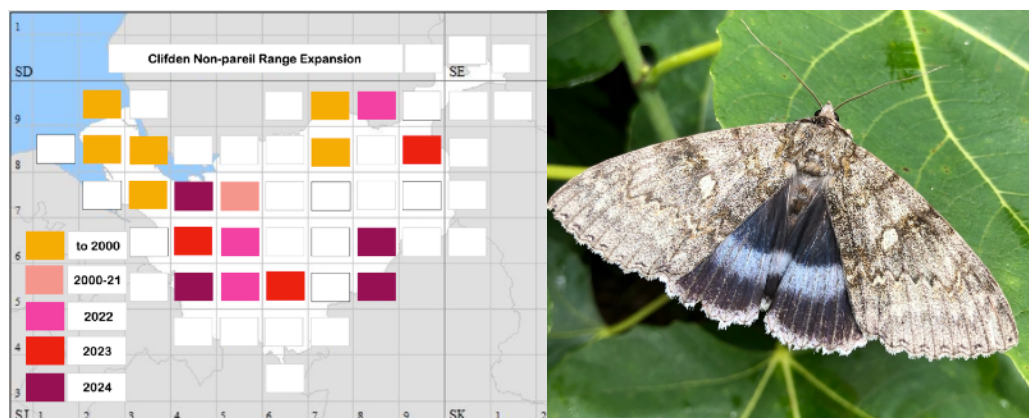
Newly recorded in 2024 in the north-east of Cheshire (Goyt Valley and Swineshaw Moor), at Little Neston in the west and at Marbury in the south.



Bill Underwood

72.076 Clifden Nonpareil *Catocala fraxini* (Linnaeus, 1758)

Congleton, Alsager, Helsby and Duckington were new hosts for Clifden Nonpareil in 2024.



Fraser McConnell

73.099 Vine's Rustic *Hoplodrina ambigua* (Denis & Schiffermüller, 1775)

The species continues to push into the north-east and also along the border with Shropshire. Vine's Rustic has not been recorded in VC58 in some of the hectads in which Cheshire has only a minor share with other counties. It is surprising, though, not to have seen the species in VC56, the square containing Tarporley and Delamere.

73.330 Radford's Flame Shoulder *Ochropleura leucogaster* (Freyer, [1831])

New for Cheshire in 2024, the species was recorded in five hectads, from Higher Poynton in the east, through Burwardsley in the south-west to Little Neston, Heswall and Wallasey. (See photo on the title page).

The Distribution of *Pammene giganteana* in Cheshire

Steve Hind

When the Cheshire Moth Atlas was published in 2018, there were only thirteen records of *Pammene giganteana* from seven sites and apart from two in my garden trap, in 2015 and 2017, all were prior to 1950. *P. giganteana* was considered to be scarce in Cheshire and with a local distribution.

During 2021 pheromone lures were used by a couple of recorders in the county and *P. giganteana* was attracted to three different sets of lures (ARG for *Pammene argyrana*; MOL for *Grapholita molesta* and SKI for *Grapholita lobarzewskii*) at three sites; gardens in Alsager and Bromborough as well as at Eastham Country Park.

From 2021 – 2024 there were a further four *P. giganteana* attracted to light traps in Cheshire, at three new sites, Great Sutton, Hatherton and Ollerton, compared to 33 *P. giganteana* to pheromone lures at 24 sites, of which 21 were at new sites. As well as the three types of lures which attracted *P. giganteana* in 2021, *P. giganteana* has also been attracted to the FUN lure for *Grapholita funebrana* since 2022.

The published flight period for *P. giganteana* is from mid/late-March – May, however the flight period appears to be moving forward with recent spells of mild weather early in the year, as one adult came to light in south Cheshire on 20th February, 2024.

The 2025 flight period also appears to have been an early one, as my first attempt to attract adults to a pheromone lure was on 10th March, when the males soon arrived at four of the five sites I visited. Lack of success at the fifth site was probably due to exposure to a cold NE wind, although the scarcity of oaks at the fifth site, was also a possible reason.



Pammene giganteana

Steve Hind

For the rest of the 2025 species flight period I took the opportunity to search as many tetrads (2km x 2km squares) as possible, as I attempted to try and discover the distribution of *P.*

giganteana in the area. The sites visited were nearest to where I live, in the north east of Cheshire, although I did spend a couple of days around Delamere and the Peckforton Hills.

As the larvae of *P. giganteana* feed inside some of the galls which occur on oak trees, when reaching a new tetrad, I first needed to find an oak tree and preferably a few oaks, to give me more chance of success. There are a lot of oaks in the hedgerows along many of the lanes on the Cheshire Plain, although such sites were generally unproductive, with woodland, even small copses producing the best results. Finding oaks in some tetrads was difficult, especially in the uplands, although when oaks were found, such sites often held *P. giganteana*.

I concentrated my efforts during the warmest parts of the day as moths appeared to be most active during sunny afternoons. I considered most mornings to be too cold prior to 11am,



Pammene giganteana

Steve Hind

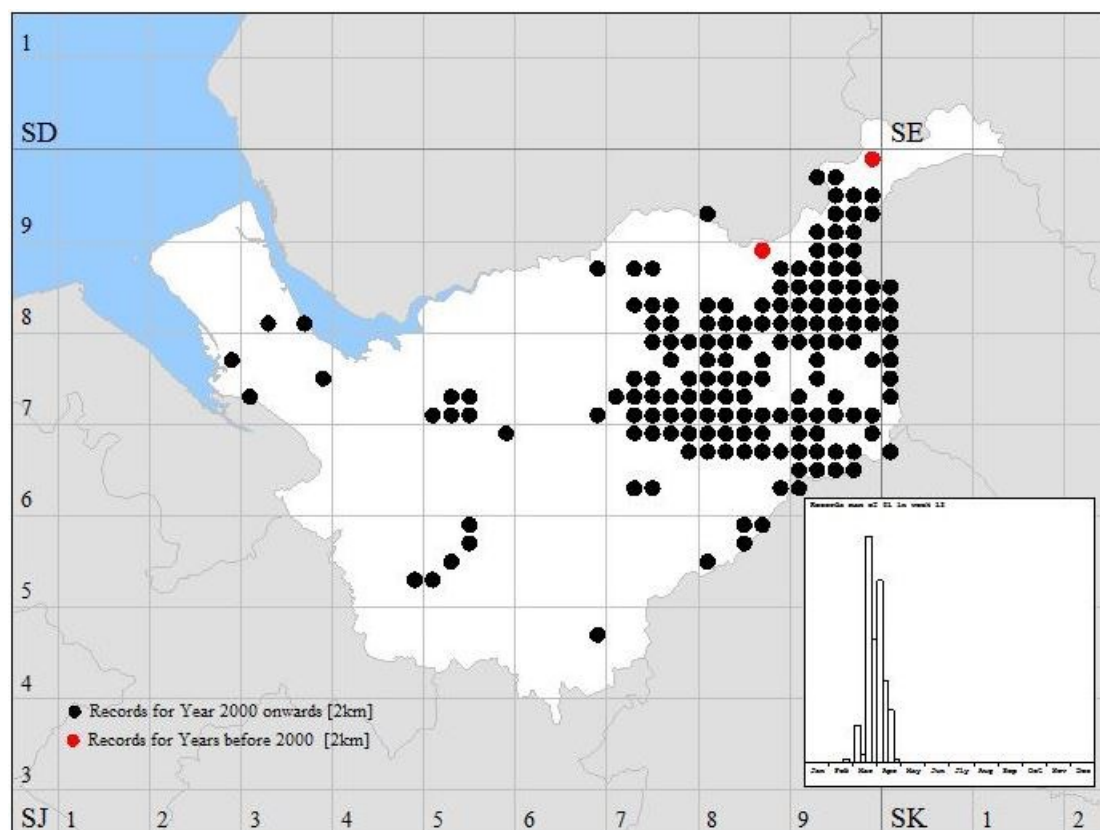
although towards late March there were a few warm mornings and I did attract eight males to the lure at Alderley Edge prior to 09:20am on 21st March. The lure was not deployed overnight.

Adult moths usually arrived at the lure within a few minutes, at which point I moved on to another site, so I did not attempt to assess the species abundance at any site. I tended to wait up to ten minutes for moths to arrive at a new site. If no moths had been attracted to the lure within ten minutes I moved on.

The peak of the 2025 flight season lasted through until early April 2025, after which they became more difficult to find and those that did appear were generally worn.

Between 10th March – 20th April 2025 I visited 154 tetrads from where *P. giganteana* was not previously known to occur, using the SKI lure and thanks to the mainly dry, sunny

weather, managed to locate them in 140 tetrads. Failures to find any in the fourteen tetrads were probably due to a number of reasons, such as; scarcity of oaks in the tetrad, or lack of accessibility to them; lack of shelter from the cold winds; insufficient time allowed to attract them to the lure; or trying after the local season had finished. Given more favourable weather conditions on the day I visited, spending more time in the tetrad and visiting during the peak of the flight period may have resulted in a more successful outcome in some of these tetrads. Maybe a visit in the future will be more successful.



Pammene giganteana distribution following 2025 fieldwork

One area where I failed to find any *P. giganteana* was the upper Dean Valley, above Rainow, which included a large oak woodland called 'The Oaks'. I first visited this site briefly on 14th April, 2024 and again on 12th April, 2025, spending several hours in the valley during 2025. Unlike most sites I visited, this site differed in that it was open to being grazed by sheep. Sheep are known to eat galls, so any tenanted galls falling to the ground may have been consumed, thereby restricting *P. giganteana* to exist at this site.

I've managed to extend our knowledge of the species distribution in Cheshire, or at least in the NE portion of Cheshire, where *P. giganteana* clearly has a much wider distribution than was previously thought. In future years we need to survey the rest of the county to see if *P. giganteana* is also as widespread elsewhere in Cheshire.

Cheshire Moth Recorders for 2024

Many recorders have submitted records not in tabular form, but instead using one of the apps, which leave a choice to the recorder about how they wish their names to appear. Consequently, it has proved convenient to give recorders' names in two lists, below. Some recorders' names appear in both lists!

Records submitted as tables

C Rupert Adams, Carole Adshead, Chloe Aldridge, Barbara Allen, Steve Andrews, Diana Arzuza, Hilary J Ash, Sean Ashton, Rebecca Ashworth, Peter F Atherton **PFA**, Ralph Atherton, Sarah Atherton, Shane Atkinson, Phil Bahan, Steve Bailey, Nicola Baines, Naomi Baker, Helen Ball, Dave Bancroft, Thomas Banks, John Barber, Marion Barlow, Charlie Barnes, I Barrie, Dave Bedford **DB**, Shelagh Beech, Steven Bell, Bill Bellamy **BB**, Mel Bellingham **MBe**, Mal Bennett, Roger Benson **RB**, Kate Bibby, Jackson Bird **JB**, Andy Bissitt **AB**, Robert Bithell **RBi**, Alan R Blears, Josh Boe **JB**, Mike Boothman, Alison & Julian Borrow **A&JB**, Isabel Bovaird, Alex S Boyle, Farley Brame, Peter Brash, Pat Brewin, Paul Brewster **PB**, Colin Brooks, Thomas Brooks, Maisie Broughton, Fern Brown, Simon Browne **SBr**, John P Bryan **JPB**, Marion Bryce, Sue D Budd, Emma Burgess, Sarah Burlinson, Paul Burt, Isabel Caitlin, Nick J Campbell, Jacqueline Carter, Max Carter, David Chambers, Andrew Chick, Jeff J Clarke, Matilda Clynych, Helen Coan **HC**, Stephen P Collins, Richard Comont, Anthony Cook, David A Cookson, Anna Cooper, Brian Cornelius, David Costello, Sheila Coverdale, L Coward, Iona Cowell **IC**, Ruth Coxon, Alex Cropper, Andrew Culshaw, Alex Cunningham, Carly Jo Curbishley **CJC**, Mike Dale **MD**, Muriel H Dale **MHD**, Rachael Darcie, Dean Davies **DD**, Harry Davies, Harvey Davies, John David Davies **JDD**, Pam Davies, Erin Dawber, J Dawson, Jennifer Dayananda, James Dempsey-Riley, Roger L H Dennis, Mark Dewhirst, Clive Donaldson **CD**, Elina-Marielle Doss, neisha dunbar-creasey, Iain Dykes, Terry Eagan, Nigel Earp **NE**, June Edgar, D Edwards **DE**, Heather Edwards, Steve and Janine Edwards, Graham Ella, Andrew Emmerson **AE**, Tom Esser, Kathryn Fegan, Philip Fentem, Rebecca Finbow, Andrew Firth, Diana Ford, Keith Fowler, Stuart Fraser, Peter Fulcher, Ken Gartside, Pete Gateley, Esther Gibson, Tony Gilbert, John Gilbody, Sam Giruzis, Sam Goff, Lyn & Alan Goodkin, Jeff Gorse, David G Green, Erika Green, Peter Gregory, Paul Griffiths **PG**, Martin Grimes, Kevin Hall, Les and Marian Hall, Tim & Elma Halliday **T&EH**, Sheelagh Halsey, Sheila Hamer, Matthew Hampson, Phil J Hampson, A Handford, Julia Harding, Peter B Hardy **PBH**, Sean Hartnett, Jim Hatfield, Derek Hatton, Sheena Hatton, Wendy Heath, Gary Hedges, Russ Hedley, Christian Heintzen **CH**, Alida Heston **AH**, Jane E Hewitt **JEH**, Dave Higginson-Tranter, Paul F Hillyer **PFH**, Roy Hilton **RH**, Steve H Hind **SHH**, Alice Hodson, Elizabeth Hollinshead, Mike Holmes **MH**, Steve W Holmes **SWH**, Paul Hopkins **PH**, Alan Horne, Diane Hornsby, David Howdon, Lyndon Howson, Kate Hughes **KH**, Jonathan Hutchins, Chris Hynes **CHy**, Liz Hynes, Andy Ingham, Jammychips Jackson, Gill Jakeman, John Jakeman **JJ**, Stephanie Jane, S J F Jarvis **SJFJ**, Tim Jenkins, Mandy Jervis & Glyn Owen **MJ&GO**, Huw John **HJ**, Claire Jones, Clive Jones **CJ**, Dave Jones, Ed Spark Jones, Ellen Jones, Graham Jones **GJ**, Anna Keightley, Dave Kemp, Tom Kenwright, John Kirkland, Tim Kirwin, Chris Knibbs **CK**, Debbie Knight **DK**, Tom Knight, Rosie Lacey, Stephen Lahan, Andrew Lamb, Jerry Lanfear, John Langley, Cyril Langman, Bob Lavery, Sarah Lawless, Alex Lees, Andy Leigh, Peter S Lennon **PSL**, Heather & Les Green, Angela M Lidgett **AML**, Julie Lightfoot **JL**, Ryan Lloyd, Ted Lock **TL**, Helen Longmore, John Lowell, Roy Lowry, Dave Maddy **DJM**, Jeanette Maddy, Nikki Mahadevan, Sheila Malimbe, John H Marchant, Antony Marriott **AM**, Matthew Maskery, Tracey & Clive Maudsley, Fraser McConnell **FMcC**, Marco McGinty, Steve J McWilliam, Siobhan Megarrell, Pete Mella, Colin Menston, P Merrett, Jane Michael, Paul Miller **PM**, Colin S Millington, Sue Millington, Barry Mills, Chris Millward, P W Milton, Anastasia Mochalova, Paul Molloy, Amanda Moore, Stephen Moores, Rob Morgan, Paul Morris **PMo**, Duncan Morrison, Jon Mortin **JM**, Benjamin Morton, Diana Moss, David Mottershead, Anita Mulligan, Natasha Murwill, Alex Neal **AN**, Belinda Nixie, Rachel Norwood, Mark O'Sullivan, Steve A Orridge, Greg Osborn, John Owen **JO**, Graham Parry, J Pass, Kevin Peace **KP**, Mike Perchard **MP**, Matt Pilkington, Lucy Pocock, Lisa Porter, Natalie Pownall, Stephen G Price, Rachel Purchase, Philip Putwain, John W Rayner **JWR**, Andrew Read, Chris Reiki, Mike & Ann Ribbands, Stephen Richardson, Crystal Rimmer, John K Roberts, John Roberts, David Robinson **DR**, Julie Rogers, Paul Round **PR**, Richard A Rowlandson, Alan Salter, Colin Schofield **CS**, Martin Scowther, Matthew Secombe, Angie Seymour **AS**, S Shackel, Jessica Sharp **JSh**, John P Shaughnessy **JPS**, Jan Sheppard, Osian Shirley, John Silloth **JSi**, Tony Sinnott, Margaret Sixsmith, Dave R Skingsley, Ben Smart **BS**, Peter Smith, Philippa Smith, Tom Smith **TS**, W Spellman, Martyn Stanyer, Eric Stead, Douglas Steadman, Giselle Sterry, Stephen Suttill, Jack H Swan, James Tatlow, Dave Taylor **DT**, Charles Thompson, Lisa Thwaites, Simon Van Toller, David Tomlinson **DTo**, George Tordoff, Jean Tuck, Jonathan Tugwood, Janet Turnbull, Jane Turner, Karen Turner, Kath Turner, Bill Underwood **BU**, Tony Usher, Tricia Wain, Jon Wainwright, K S Walker, David Walsh **DW**, Paul Walton, Tim Ward **TW**, Mike Warner, Clive Washington **CW**, Malcolm Watling, Michael R Whiteside **MRW**, MPP Wildlife, Roger Wilkinson, Tony Wilkinson, John Witton, Patrick Woods, S Woollam, Charley Zanmato.

Records submitted in Apps

4ndy, abbbymcb, ahappyyak, alex_willlll, Amy, amyperks23, Andrea, annapaa-11, annelith, AnnieT39, Anon, ashleyrvn, atalanta20, Batfink80, beccachuu, benri, blotty1722, booeey78, Brad, calebharding571, chriswhite2002, chrlltewbstr, cled, clj909, cygnefk9, david000, debco, desmodus60, donscot, dpfm, dreamstate2002, earlgreytea, edgeleywildlifereserve, Elizabeth, ericd02, ezzieruth, fatatouille, fox-glo-ves, frodalia, frodshamb, ftwentytwo, gkellerman0, glynyglo, Greg, grenville_the_frog, grumpymouse00, hconway02, heath02, helen33betts, helenaj, helgast89, hollyagn, j_bur, jab13, Jack, JackieT, jamesc89, jara47, jarronevsbaru, Jazz, jerry2018, jerrywillow, jiminad, Joe, jolm, jolucky, jond5216, jonnet, jowren, kate-wirral, kellycorvus, keytep, kjf, klkohler, lauriwalks7412, Leahjw, leightonhayes123, lemonukuk, lljjj, locumtenens, louiset, mannybuckle, Marise, martin_9, maureenk, mcbemused, mel ca, mfrenchie, mikejj88, minniecat, moel_arthur, mosspiglet1123, mrisk, mydonna83, Nan, naturealexis, nel_appletree, ntalderleyedge, pad001, paulcornwell1967, pdarker, pipswich, pori, purplesusieq, racwag, ratelseany, redkite01, ReWild Your School, rhas, rhysp, robobrien **ROB**, rolymoly, roryga01, rowley12, Seagull80, ShaydenY, shezzer, Simon, sleepyems, snoyce, soupdragon_, spgle09 **Anon**, spuddie, Stacey, starnosemole, tally51, tangshuttfriend, tkelso2308, tom_123, tomatotom, tonythevortex, tracey1712, treespleaselouise, trfcdanny, viking80, wlll0w1tr33, wanderingwiggy, whirley, wilddeden, willus, Wirral98765, woodwards, wozza74, xxsarah_ilsleyxx, ycl6, zoochris.

Acknowledgements

The author would like to thank everyone who submitted records and photographs to be included into this report. Thanks also to all those who have helped with species identification and record verification through the year.